

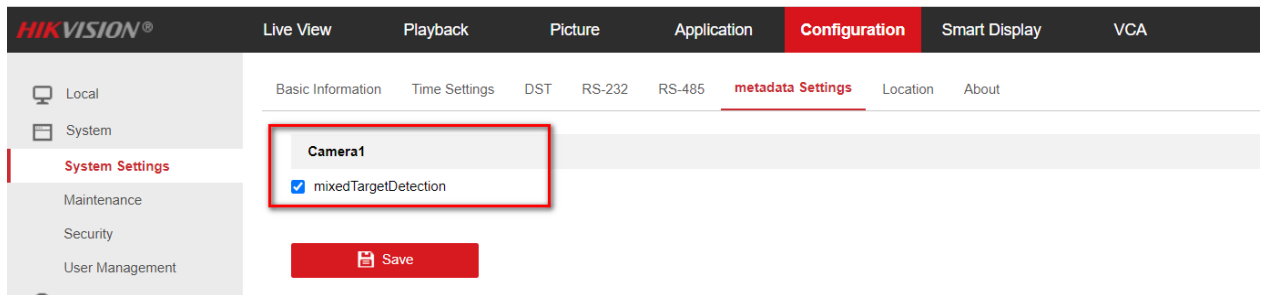
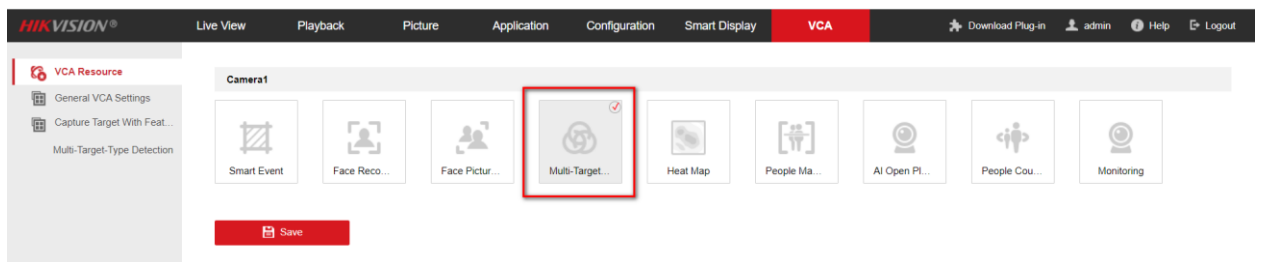
## Network Camera Firmware Version: V5.8.10 Release Note

<b>Firmware</b> <b>Basic Information</b>	Firmware Version:	V5.8.10 build221108
---	-------------------	---------------------

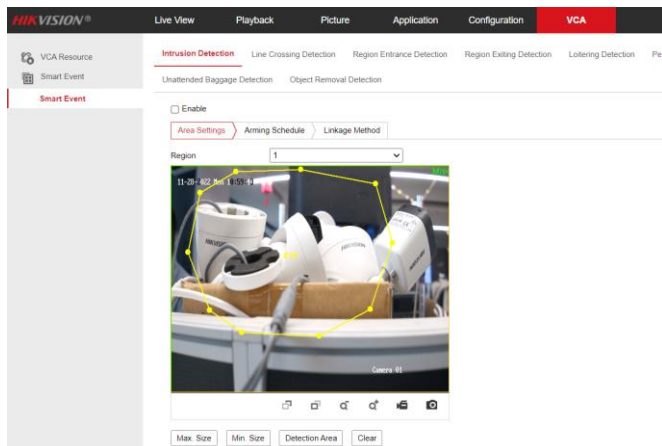
### 1. New Features

**For Non-ANPR models (Model without /P) :**

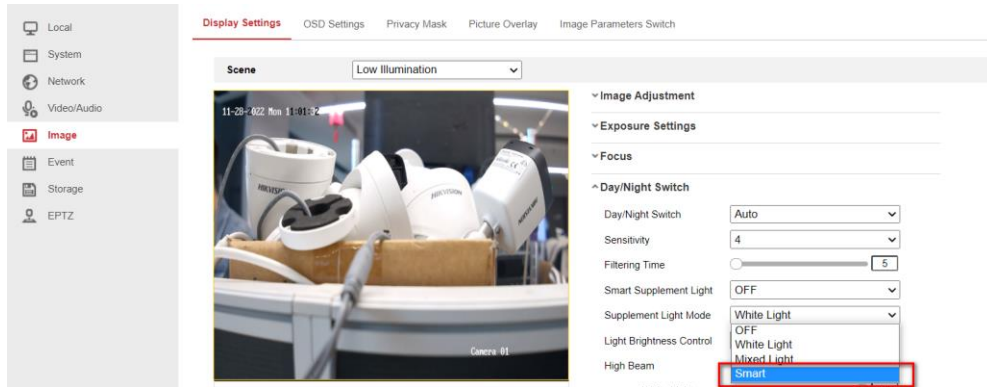
- Support metadata on Multi-Target-Type Detection mode.



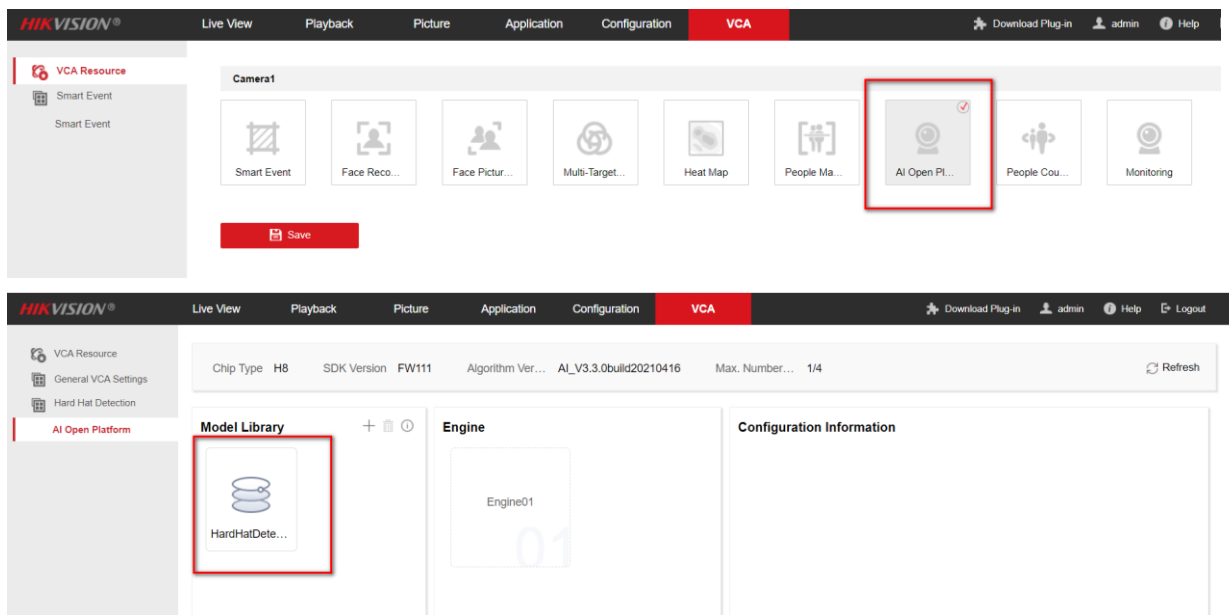
- Support drawing polygon detection area on Smart Event mode, maximum support 10 sides.



- Support smart supplement light on Smart Event mode, the default supplement light is IR, when the alarm is triggered, it can switch to white light mode. (Only for 7xx7 model)



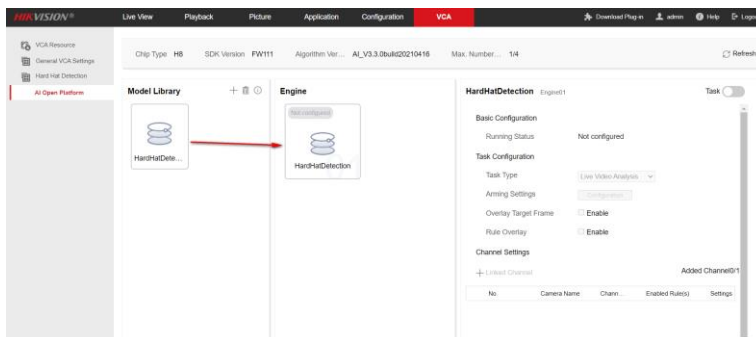
- Newly add AIOP mode with built-in hard hat detection algorithm.



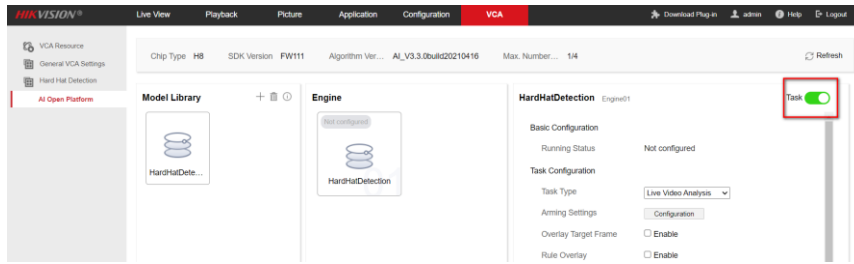
- **Hard Hat Detection:** it detects targets in the set monitoring region who do not wear the hard hat and triggers an alarm.

Steps:

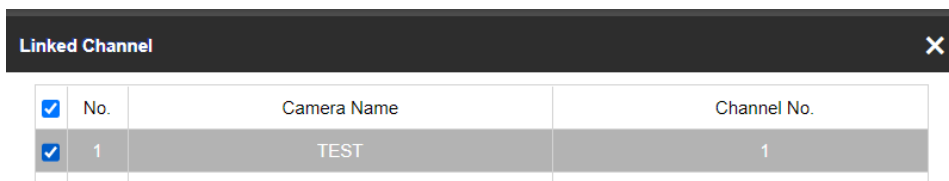
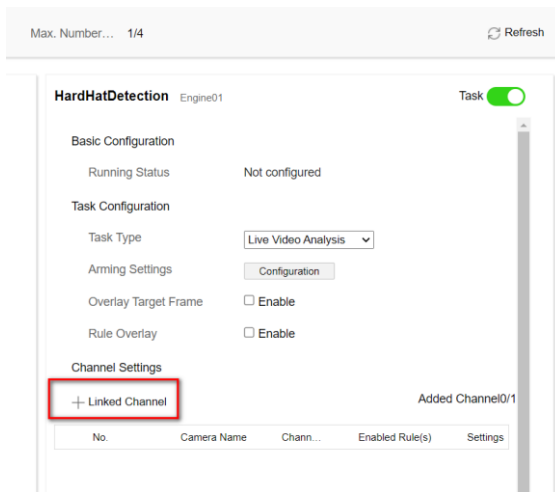
1. Drag Hard Hat Detection model in Model Library to Engine to bind them.



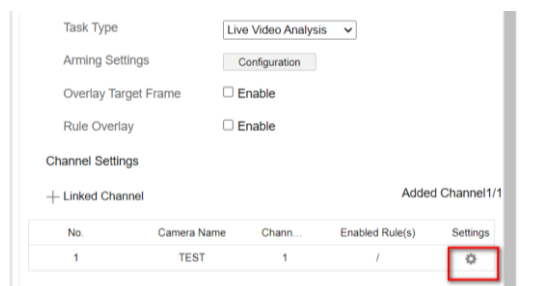
2. Click **Hard Hat Detection** model in Engine and click Task to enable the function.



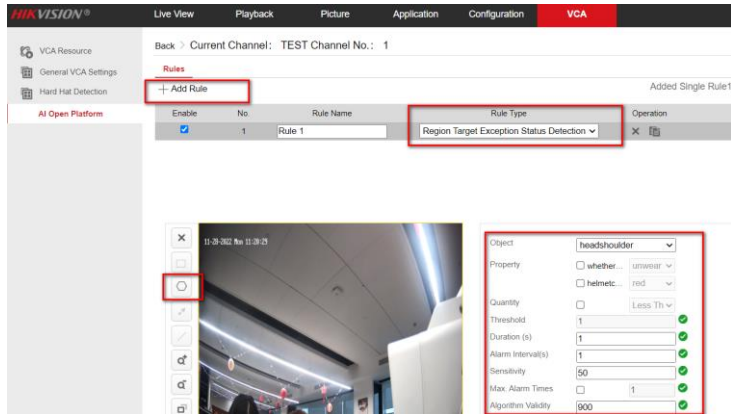
3. Select a task type.
  - i. **Live Video Analysis:** The device analyzes the live video to realize target detection, tracking and result uploading.
  - ii. **Scheduled Capture Analysis:** The device captures based on the set auto-switch interval to analyze the captured picture and upload results.
4. Click Configuration besides Arming Settings to set arming schedule and linkage method.
5. (Optional) Enable **Overlay Target Frame** and **Rule Overlay** according to your needs.
6. Set a linked channel.
  - i. Click **Linked Channel** to select a channel.



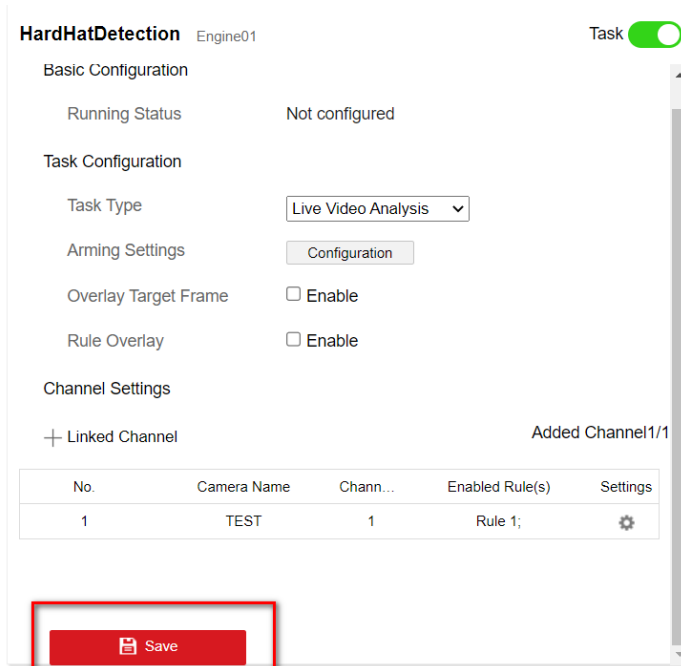
- ii. Click  of the linked channel to set rules.



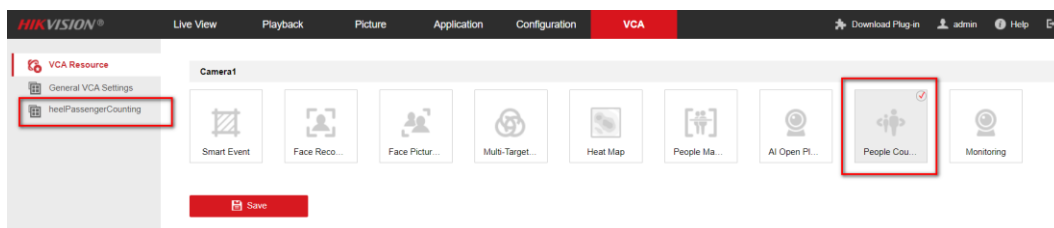
- iii. Click **Add Rule**. Check **Enable** and rename the rule.
- iv. Select a rule type.
- v. Set the detection rule.
- vi. Click **OK**.



- 7. Click **Save** to save the settings.



- Newly add heelPassengerCounting mode, up to 3 count areas and corresponding detection lines can be configured.



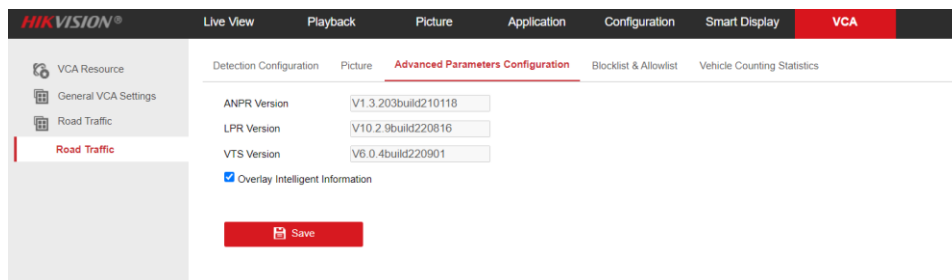
- Motion detection only available on Smart Event and Monitoring mode.

- Do not need to restart the device to switch to other VCA modes except the Smart Event and Monitoring.
- Newly add PTRZ model: iDS-2CD7547G0 / iDS-2CD7587G0

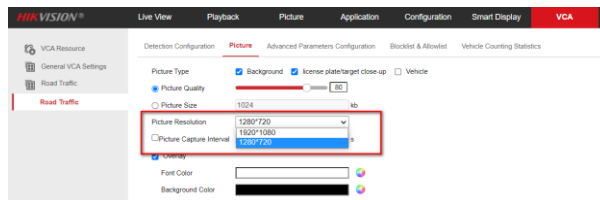
## For ANPR models (Model with /P) :

- Support enable POS on web: Clicking Overlay Intelligent Information on VCA→Road Traffic→

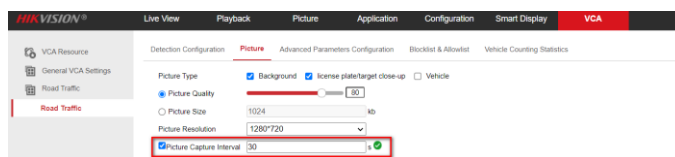
### Advanced Parameters Configuration page.



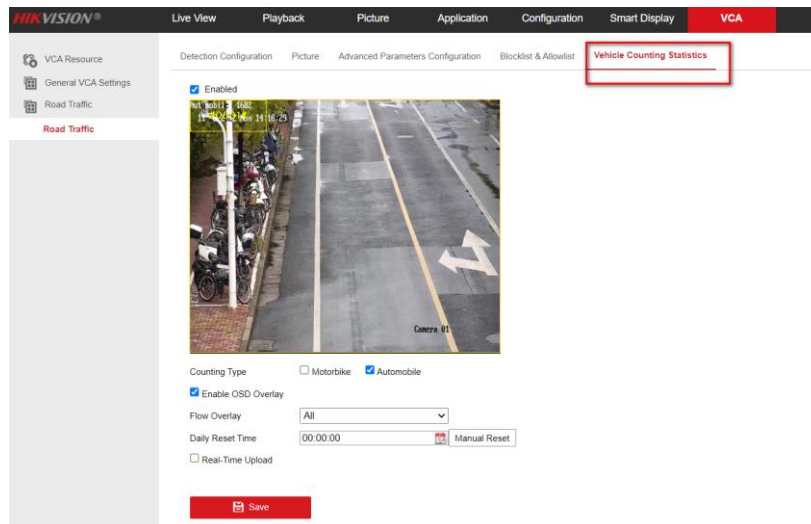
- Support display algorithm version on web: VCA→Road Traffic→Advanced Parameters Configuration displays ANPR Version, LPR Version and VTS Version.
- Support set the capture of the background image resolution.



- Support upload license plate alarm continuously, upload interval (1-30s can be set).



- Newly add Vehicle counting function.



- Newly add camera MAC address, vehicle attributes (country/region, color, brand, type) to upload via http listening.
- Remove License Plate Type feature on Smart Display page.
- Newly support Serbia and Turkmenistan license plate by algorithm.
- Newly support US and Korea license plate recognition.(For customization only)
- Newly add features for Middle East region: Category, Plate color and Plate size. These features only display on alarm information.
- Newly add PTRZ model: iDS-2CD7547G0/P

## Customer Impact and Recommended Action

This update refers to function/compatibility improvement and will take effect automatically after the Date of Change. We are very sorry for any inconvenience of use-habit changes caused by this action. For any questions and request for this firmware, please contact our local technical support team.

### Remarks:

- Hikvision reserves the right to change, alter or withdraw the above notification without prior notice.

- Product design and specifications are subject to change without prior notice.
- The Hikvision firmware may contain errors known as errata which may cause the product to deviate from published specifications. Current characterized errata are available on request.
- Hikvision is not liable for any typing or printing errors.

Hikvision Digital Technology CO., Ltd.

No. 555 Qianmo Road, Binjiang District, Hangzhou  
310051, China

Tel: +86-571-8807-5998

<b>Supported Product List</b>	
<b>Product Category</b>	<b>Model Number</b>
7 Series DeepinView Camera	iDS-2CD7026G0(/S)(-AP)(/F11)(C)
7 Series DeepinView Camera	iDS-2CD7046G0/E-IHSY(R)(/F11) (C)
7 Series DeepinView Camera	iDS-2CD7086G0(/S)(-AP)(/F11)(C)
7 Series DeepinView Camera	iDS-2CD7126G0(/S)-IZS (C)
7 Series DeepinView Camera	iDS-2CD7146G0(/S)-IZS (C)
7 Series DeepinView Camera	iDS-2CD7186G0(/S)-IZS (C)
7 Series DeepinView Camera	iDS-2CD7526G0(/S)-IZHS(Y)(R)(C)
7 Series DeepinView Camera	iDS-2CD7546G0(/S)-IZHS(Y)(R)(C)
7 Series DeepinView Camera	iDS-2CD7586G0(/S)-IZHS(Y)(R)(C)
7 Series DeepinView Camera	iDS-2CD7A26G0(/S)-IZHS(Y)(R)(C)
7 Series DeepinView Camera	iDS-2CD7A46G0(/S)-IZHS(Y)(R)(C)
7 Series DeepinView Camera	iDS-2CD7A86G0(/S)-IZHS(Y)(R)(C)
7 Series DeepinView Camera	iDS-2CD7146G0-IZHS(Y)(D)
7 Series DeepinView Camera	iDS-2CD7186G0-IZHS(Y)(D)
7 Series DeepinView Camera	iDS-2CD7A47G0-XZHS(Y)
7 Series DeepinView Camera	iDS-2CD7A87G0-XZHS(Y)
<b>7 Series DeepinView Camera</b>	<b>iDS-2CD7547G0-XZHS(Y)</b>
<b>7 Series DeepinView Camera</b>	<b>iDS-2CD7587G0-XZHS(Y)</b>
7 Series ANPR Camera	iDS-2CD7026G0/P-AP(C)
7 Series ANPR Camera	iDS-2CD7046G0/P-AP(C)
7 Series ANPR Camera	iDS-2CD7026G0/EP-IHSY(C)
7 Series ANPR Camera	iDS-2CD7046G0/EP-IHSY(C)

7 Series ANPR Camera	iDS-2CD7A26G0/P-IZHS(C)
7 Series ANPR Camera	iDS-2CD7A46G0/P-IZHS(C)
7 Series ANPR Camera	iDS-2CD7A26G0/P-IZHSY(C)
7 Series ANPR Camera	iDS-2CD7A46G0/P-IZHSY(C)
<b>7 Series ANPR Camera</b>	<b>iDS-2CD7547G0/P-XZHSY</b>

*Note: Models in red font are newly released models.*