



# HikCentral Professional V2.1.0

Release Notes

## Legal Information

© 2021 Hangzhou Hikvision Digital Technology Co., Ltd. All rights reserved.

This Document (hereinafter referred to be “the Document”) is the property of Hangzhou Hikvision Digital Technology Co., Ltd. or its affiliates (hereinafter referred to as “Hikvision”), and it cannot be reproduced, changed, translated, or distributed, partially or wholly, by any means, without the prior written permission of Hikvision. Unless otherwise expressly stated herein, Hikvision does not make any warranties, guarantees or representations, express or implied, regarding to the Document, any information contained herein.

### About this Document

Pictures, charts, images and all other information hereinafter are for description and explanation only. The information contained in the Document is subject to change, without notice, due to updates or other reasons.

Please use this Document with the guidance and assistance of professionals trained in supporting the Product.

### LEGAL DISCLAIMER

TO THE MAXIMUM EXTENT PERMITTED BY APPLICABLE LAW, THE DOCUMENT IS PROVIDED "AS IS" AND “WITH ALL FAULTS AND ERRORS”. HIKVISION MAKES NO REPRESENTATIONS OR WARRANTIES, EXPRESS OR IMPLIED, INCLUDING BUT NOT LIMITED TO, WARRANTIES OF MERCHANTABILITY, FITNESS FOR A PARTICULAR PURPOSE OR NON-INFRINGEMENT. IN NO EVENT WILL HIKVISION BE LIABLE FOR ANY SPECIAL, CONSEQUENTIAL, INCIDENTAL, OR INDIRECT DAMAGES INCLUDING, AMONG OTHERS, DAMAGES FOR LOSS OF BUSINESS PROFITS, BUSINESS INTERRUPTION, OR LOSS OF DATA, CORRUPTION OF SYSTEMS, OR LOSS OF DOCUMENTATION, WHETHER BASED ON BREACH OF CONTRACT, TORT (INCLUDING NEGLIGENCE), OR OTHERWISE, IN CONNECTION WITH THE USE OF THE DOCUMENT, EVEN IF HIKVISION HAS BEEN ADVISED OF THE POSSIBILITY OF SUCH DAMAGES OR LOSS

This document briefly introduces the new functions and features in the **HikCentral Professional 2.1.0** updated from Version 2.0.0.

The content of this manual is furnished for informational use only and it is subject to change without notice.

# TABLE OF CONTENTS

<b>Chapter 1 Login</b> .....	<b>1</b>
<b>Chapter 2 Resource Management</b> .....	<b>1</b>
<b>Chapter 3 IP Speaker</b> .....	<b>3</b>
<b>Chapter 4 Security Inspection</b> .....	<b>Error! Bookmark not defined.</b>
<b>Chapter 5 Digital Signage</b> .....	<b>6</b>
<b>Chapter 6 Video</b> .....	<b>7</b>
6.1 Added Features.....	7
6.2 Updated Features .....	10
<b>Chapter 7 Event and Alarm</b> .....	<b>13</b>
7.1 Added Features.....	13
7.2 Updated Features .....	16
<b>Chapter 8 Investigation</b> .....	<b>17</b>
<b>Chapter 9 Person Management</b> .....	<b>19</b>
<b>Chapter 10 Visitor Management</b> .....	<b>22</b>
<b>Chapter 11 Access Control and Elevator Control</b> .....	<b>25</b>
11.1 Added Features.....	25
11.2 Updated Features .....	27
<b>Chapter 12 Time and Attendance</b> .....	<b>29</b>
12.1 Added Features.....	29
12.2 Updated Features .....	33
<b>Chapter 13 Vehicle</b> .....	<b>Error! Bookmark not defined.</b>
<b>Chapter 14 Smart Wall</b> .....	<b>35</b>
<b>Chapter 15 Security</b> .....	<b>48</b>
<b>Chapter 16 System Configuration</b> .....	<b>49</b>
<b>Chapter 17 Third-Party Integration</b> .....	<b>49</b>
<b>Chapter 18 Maintenance</b> .....	<b>52</b>
18.1 Added Features.....	52
18.2 Updated Features .....	52
<b>Chapter 19 Globalization</b> .....	<b>52</b>
<b>Chapter 20 OpenAPI</b> .....	<b>53</b>

# Chapter 1 Login

The Web Client and the Control Client do not require logging in again after adding a new license.

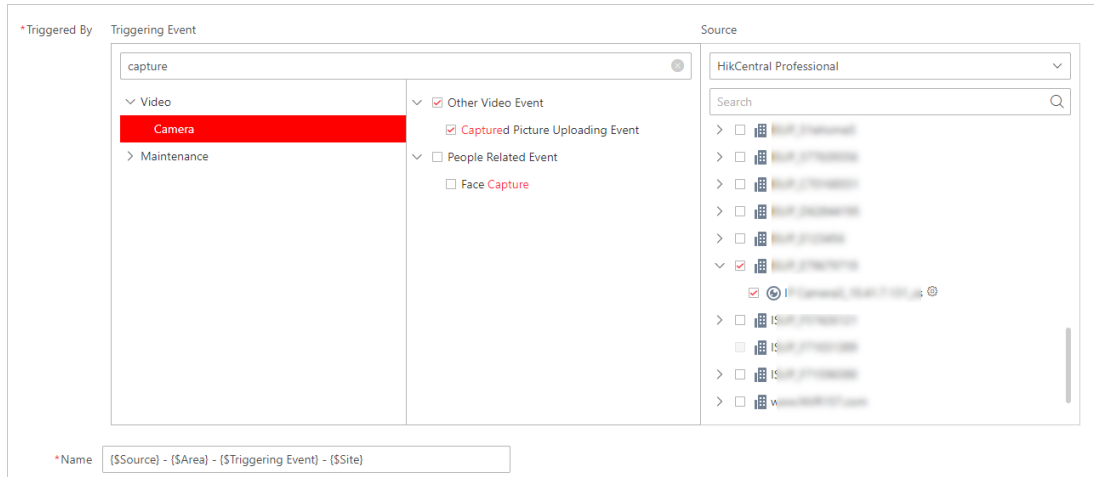
# Chapter 2 Resource Management

1. Support adding and managing IP speakers.
2. For devices added via ISUP protocol, these functions are supported: queue analysis, stream encryption, queue analysis report, heat map, etc.)
3. Support adding and managing 4G polar cameras. The Web Client supports displaying the camera's network status (Asleep and Waked Up) and battery, and supports configuring capture-related events.

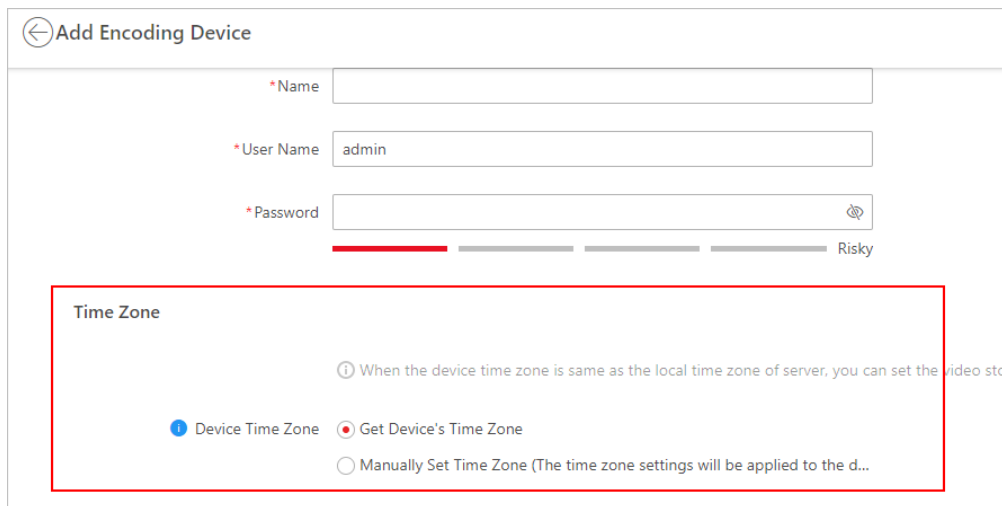
Name	Address	Serial No.	Version	Available Cameras	Alarm Inputs/Out...	Network Status	Password Str
192.168.1.100	192.168.1.100	DS-2CDS5...	V5.6.0 bu...	7	20/8	Online	Strong
192.168.1.78	192.168.1.78	DS-2CDS5...	V5.6.0 bu...	1	1/1	Online	Weak
192.168.1.2	192.168.1.2	DS-2CDS5...	V5.6.0 bu...	2	3/2	Online	Weak
192.168.1.100	192.168.1.100	DS-2CDS5...	V5.6.0 bu...	25	5	Online(Waked Up)	/
www.hikvision.com	www.hikvision.com	DS-2CDS5...	V5.6.0 bu...	5	20/8	Online	Strong

Name	Address	Serial No.	Version	Available Cameras	Alarm Inputs/Out...	Network Status	Password
192.168.1.100	192.168.1.100	DS-2CDS5...	V5.6.0 bu...	7	20/8	Online	Strong
192.168.1.78	192.168.1.78	DS-2CDS5...	V5.6.0 bu...	1	1/1	Online	Weak
192.168.1.2	192.168.1.2	DS-2CDS5...	V5.6.0 bu...	2	3/2	Online	Weak
192.168.1.100	192.168.1.100	DS-2CDS5...	V5.6.0 bu...	5	20/8	Online(Asleep)	/
www.hikvision.com	www.hikvision.com	DS-2CDS5...	V5.6.0 bu...	5	20/8	Online	Strong

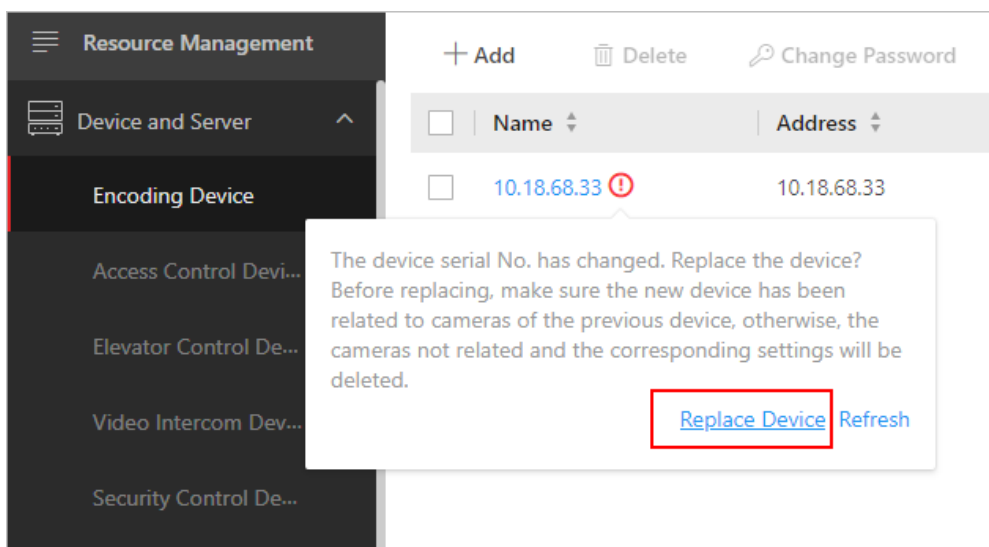
Name	Addr...	Serial...	Versi...	Netw...	DiskS...	HDD ...	Recor...	Man...	Hot S...	Disk ...	Armi...	Device Battery Capacity
192.168.1.100	192.168.1.100	DS-2CDS5...	V5.6.0 bu...	Online	No HDD	Normal	Hikvision	Unknown	--	Armed.	78% (Refresh Time: 2021/06/22 20:28:48)	



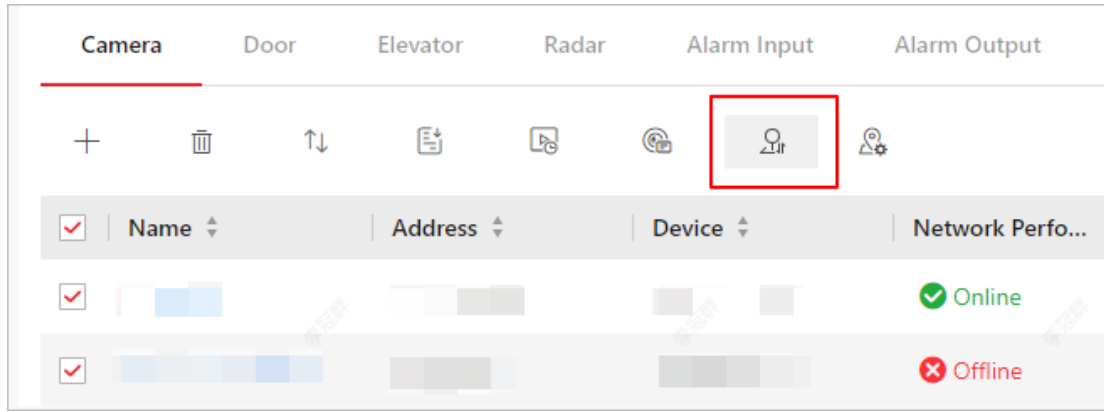
- Optimized the configuration of device time zone. The Web Client supports getting devices' time zone.



- The Web Client supports replacing device if a change of serial number is detected.

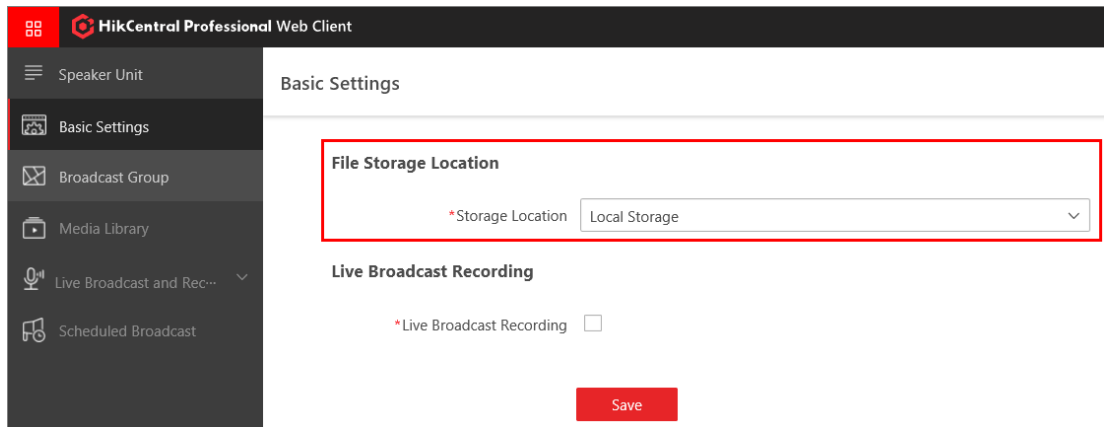


- The Web Client supports getting preset information from added cameras.

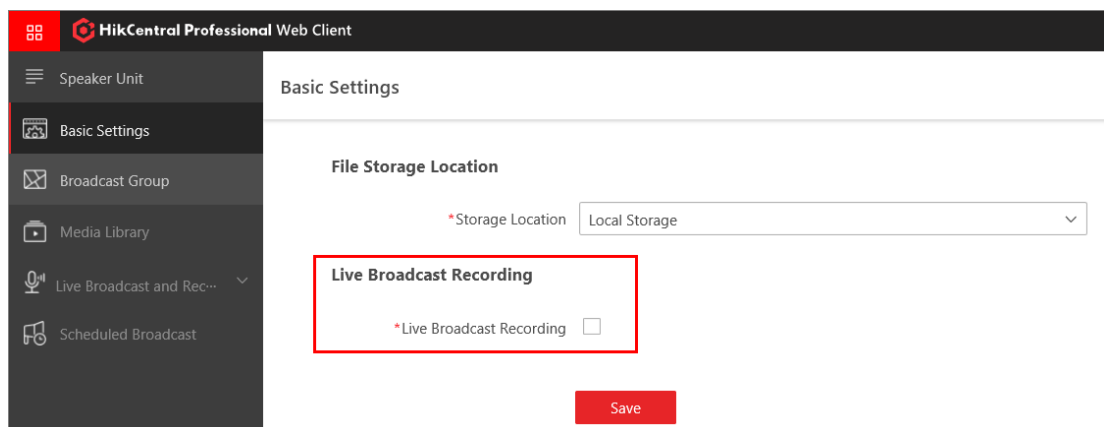


## Chapter 3 IP Speaker

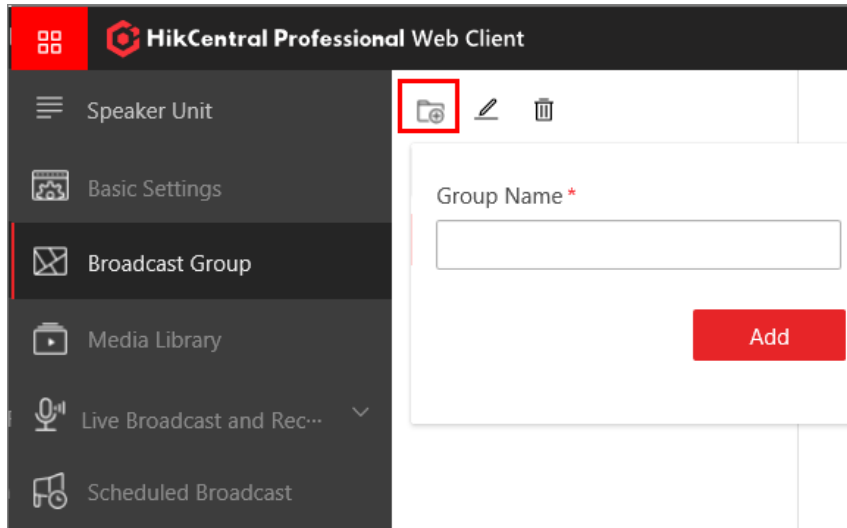
1. The Web Client supports setting storage location (local PC or pStor) for the audio to broadcast



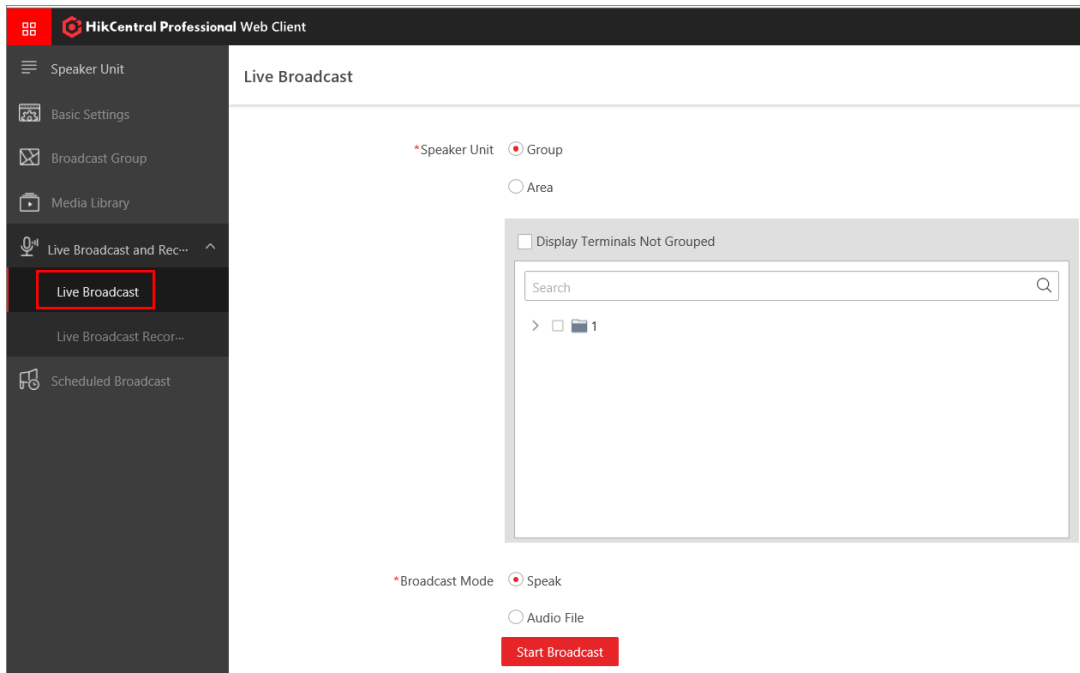
2. The Web Client supports enabling live broadcast recording.



3. The Web Client supports grouping multiple speaker units for convenient management.

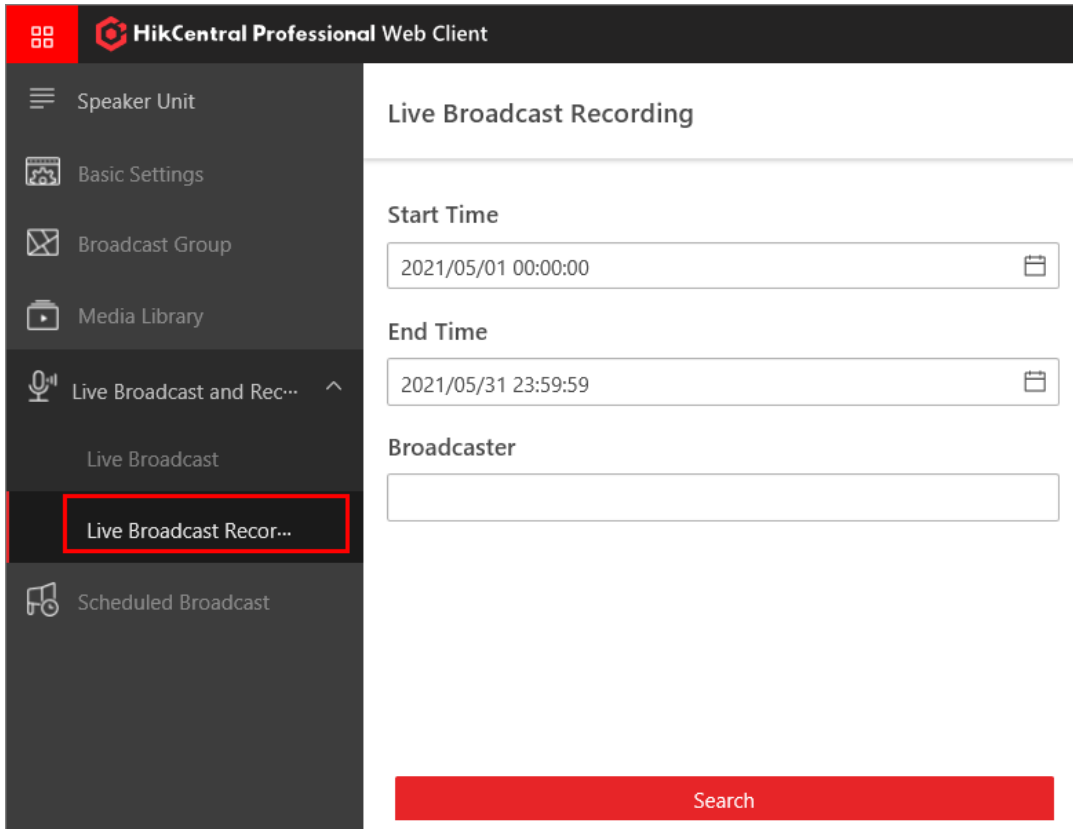


4. The Web Client supports uploading media files to the platform and managing them.
5. The Web Client and the Control Client supports configuring live broadcast and selecting the speaker units from group(s) or area(s). It also supports two broadcast modes.

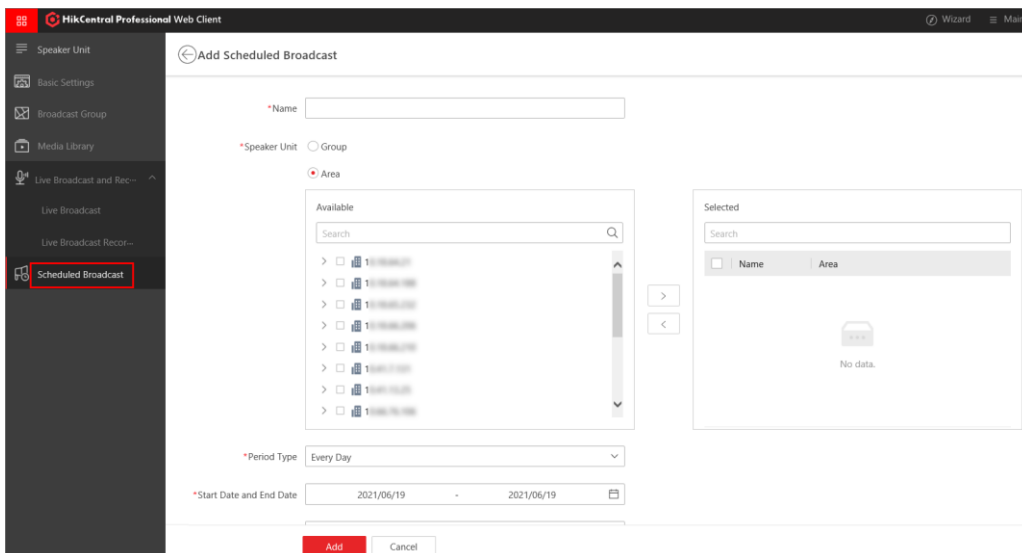


6. The Web Client and the Control Client supports searching for live broadcast records by setting conditions such as the start time and end time.



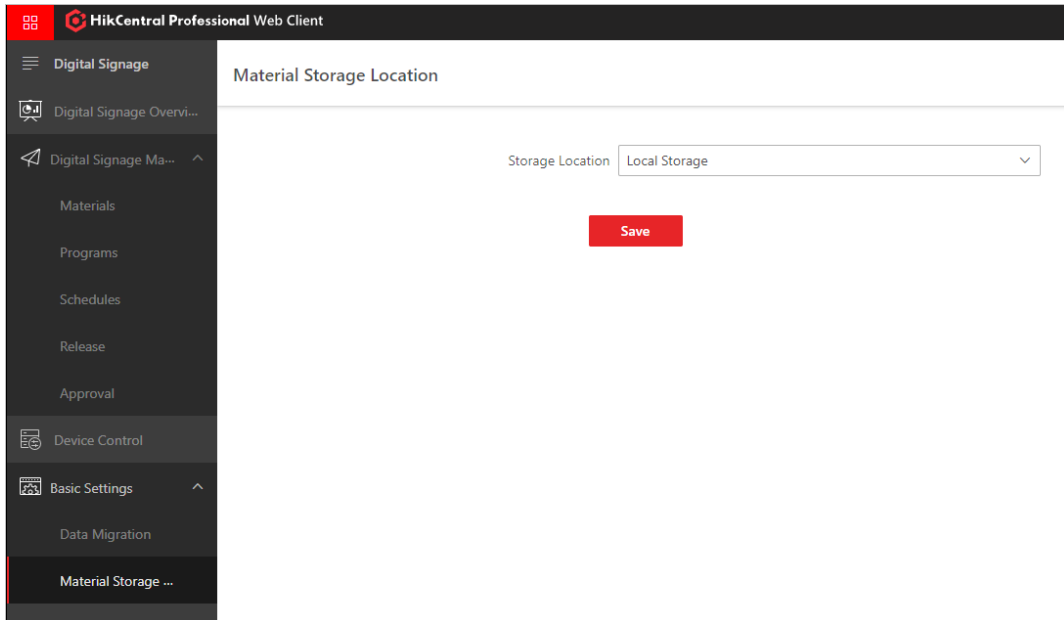


7. The Web Client supports configuring scheduled broadcast. Supports selecting the speaker units from group(s) or area(s). Supports setting the period type, broadcast time, play mode, and other related parameters.

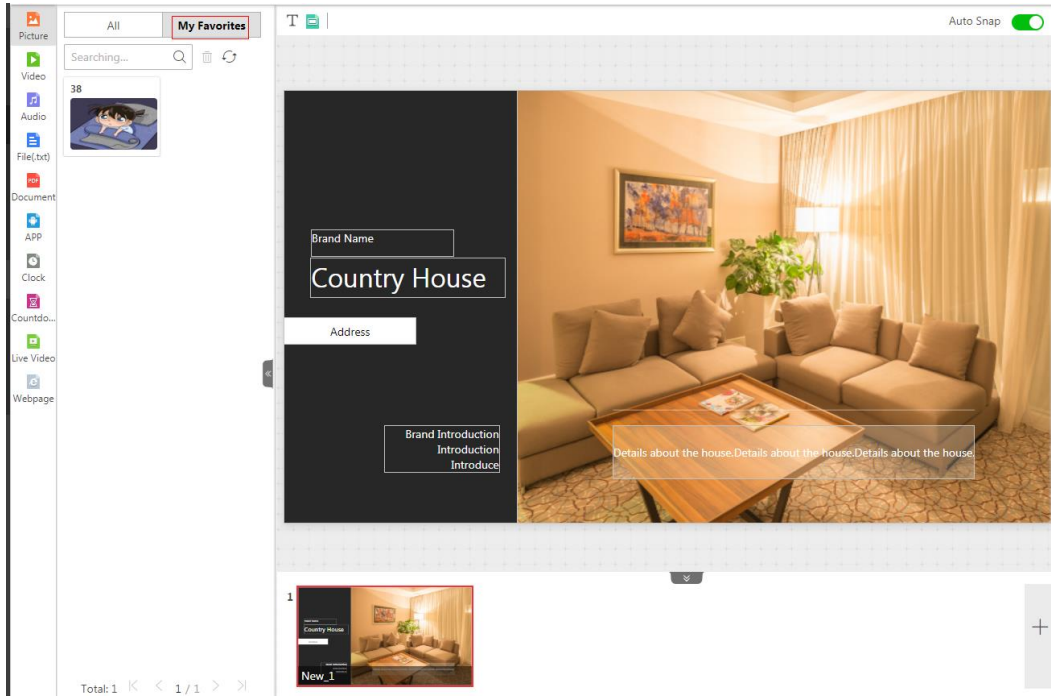


## Chapter 4 Digital Signage

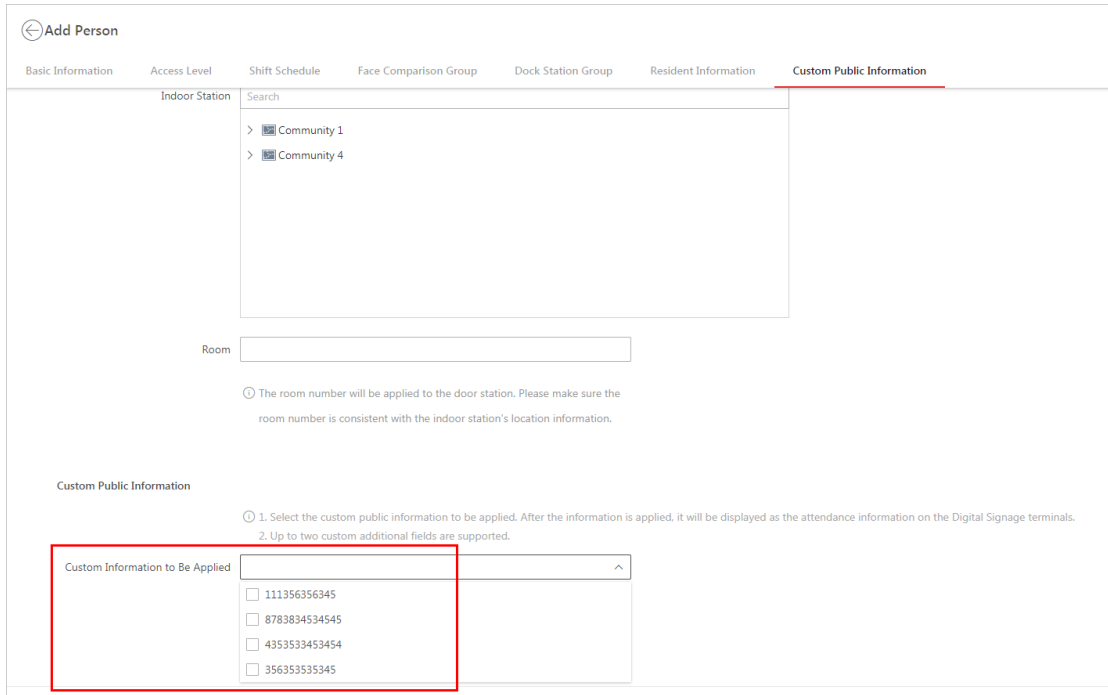
1. The Web Client supports configuring the local storage (i.e. the PC where HikCentral Professional Server is installed) as the storage location of digital signage materials.



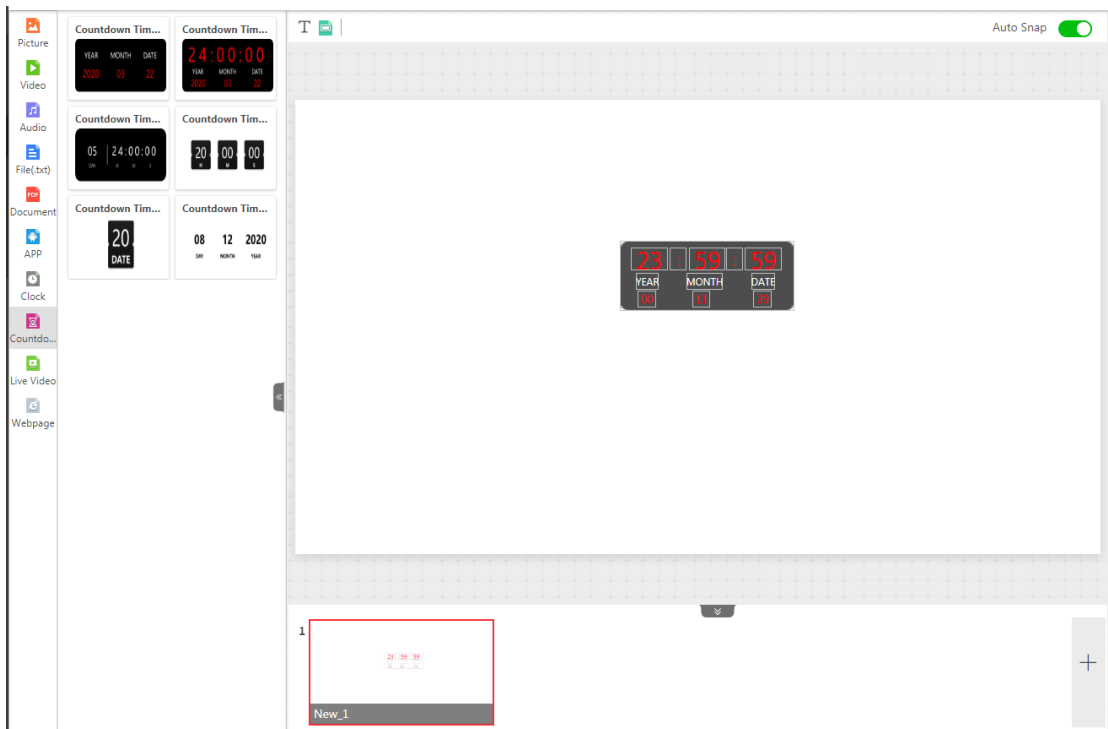
2. The Web Client supports adding materials, programs, and schedules to My Favorites.



3. The web client supports applying custom public information to digital signage terminals for displaying. On the Add Person page, select the to-be-applied custom public information. After adding the person, the selected custom public information will be applied to digital signage terminals automatically.



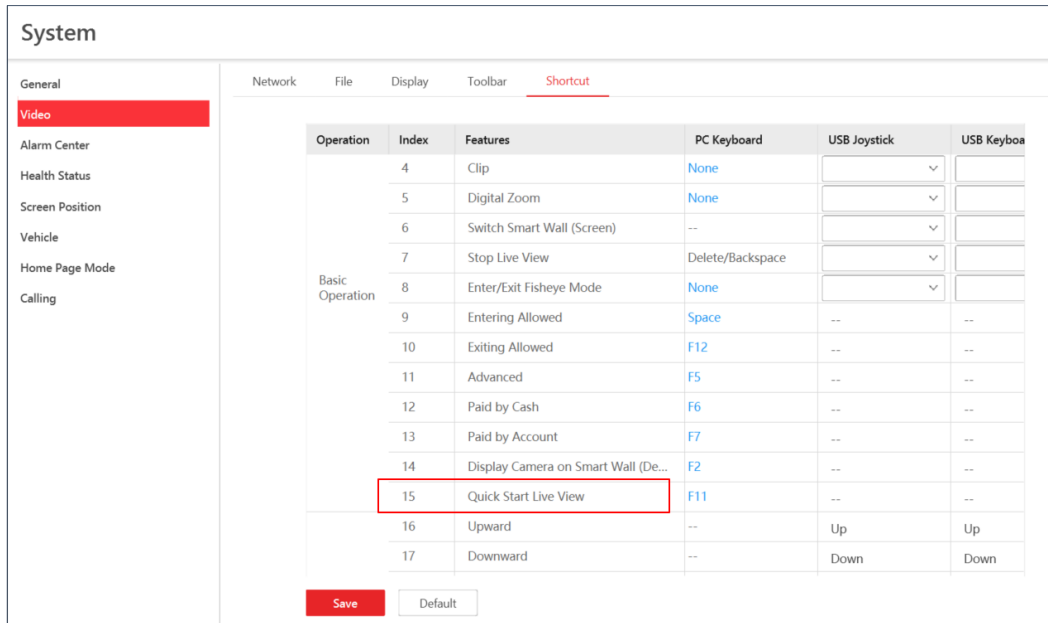
4. Added new styles of countdown timer from display configuration.



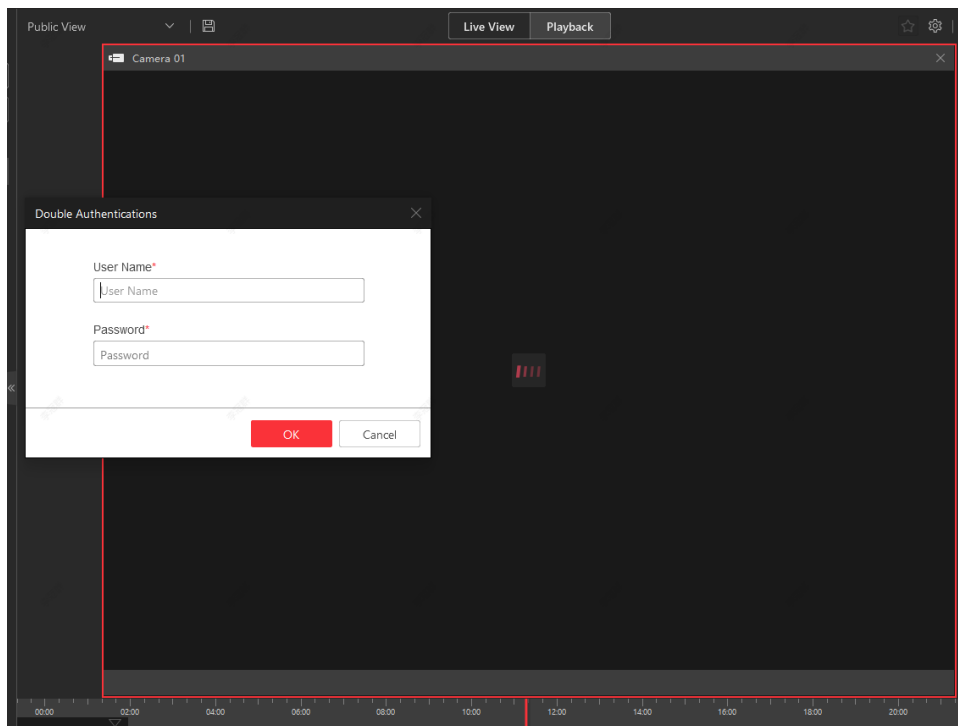
## Chapter 5 Video

### 5.1 Added Features

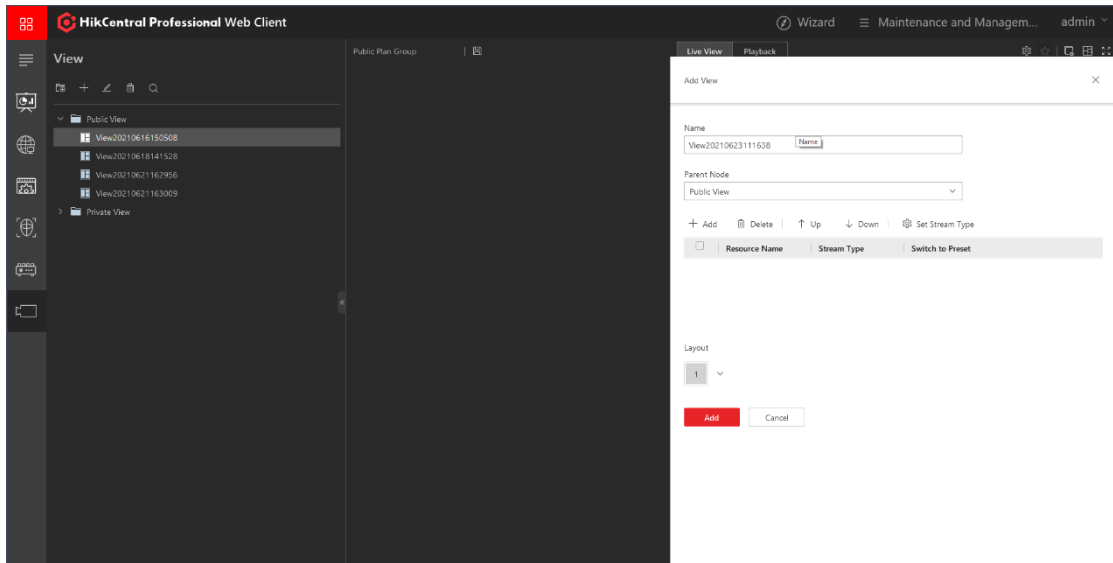
1. On the control client, added a shortcut to quick start live view. Select a window, press the shortcut set, and enter camera ID to quickly start live view.



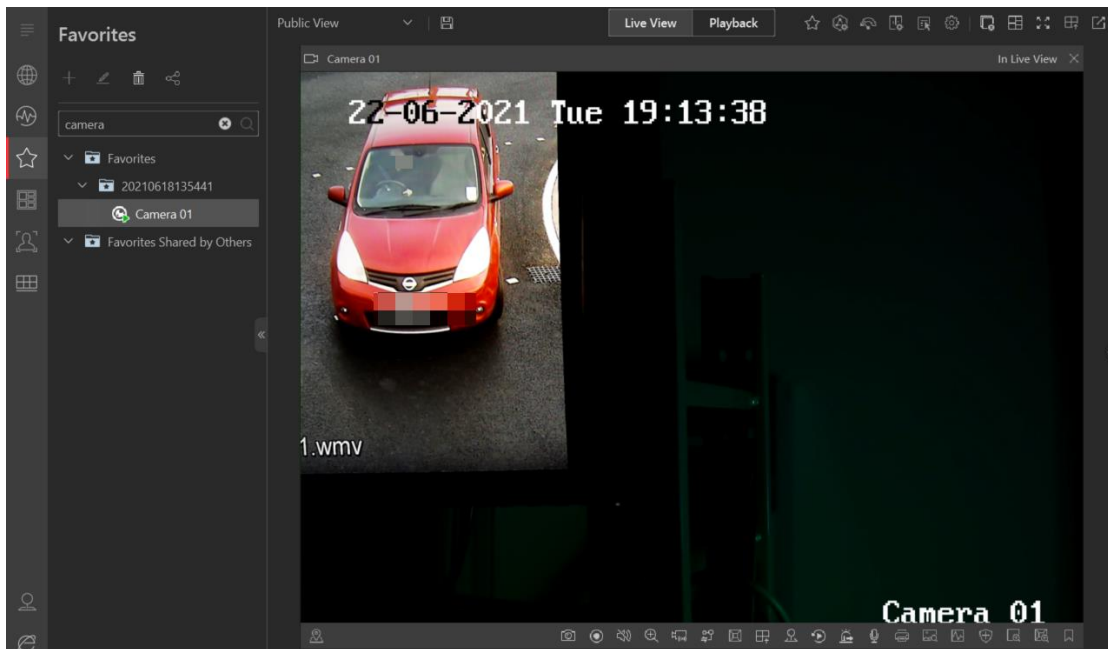
- The Control Client supports double authentications when exporting video files during playback if you have enable this function.



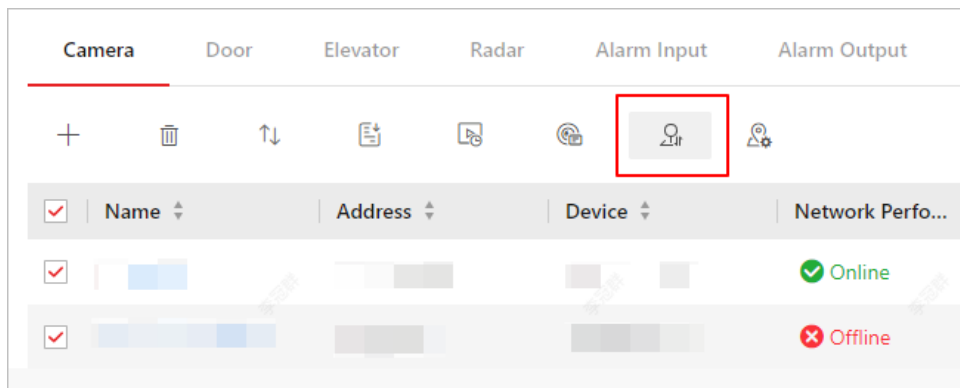
- On the Web Client, there is a view management recently added.



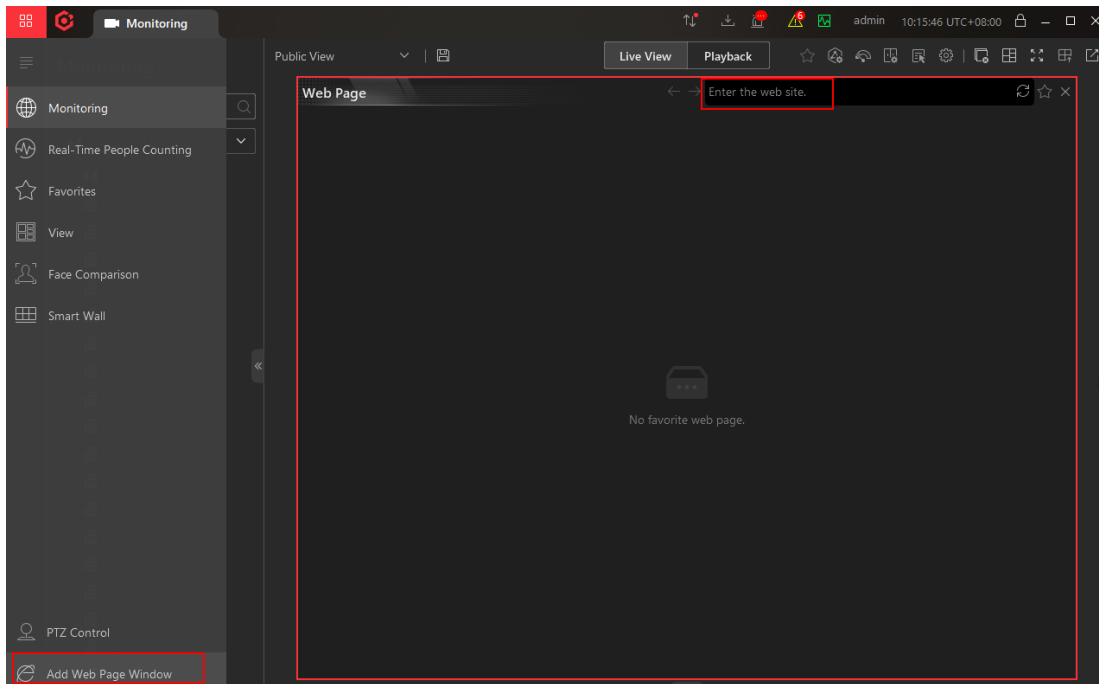
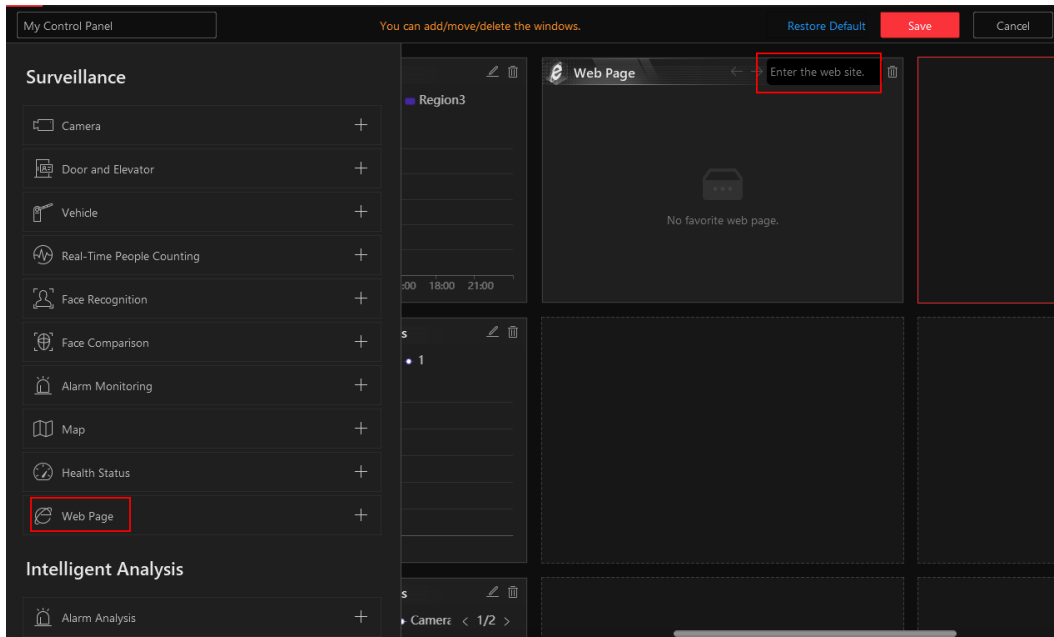
4. On the Control Client, a Favorite section is added.



5. The Web Client supports getting presets from managed devices.



6. The Control Panel and Monitoring support entering the URL of a web page to display it in the window.

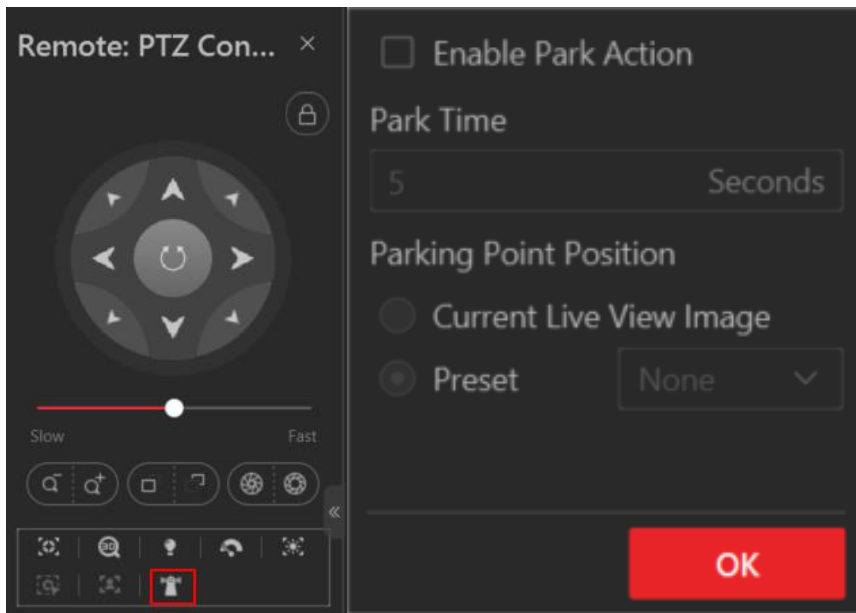


## 5.2 Updated Features

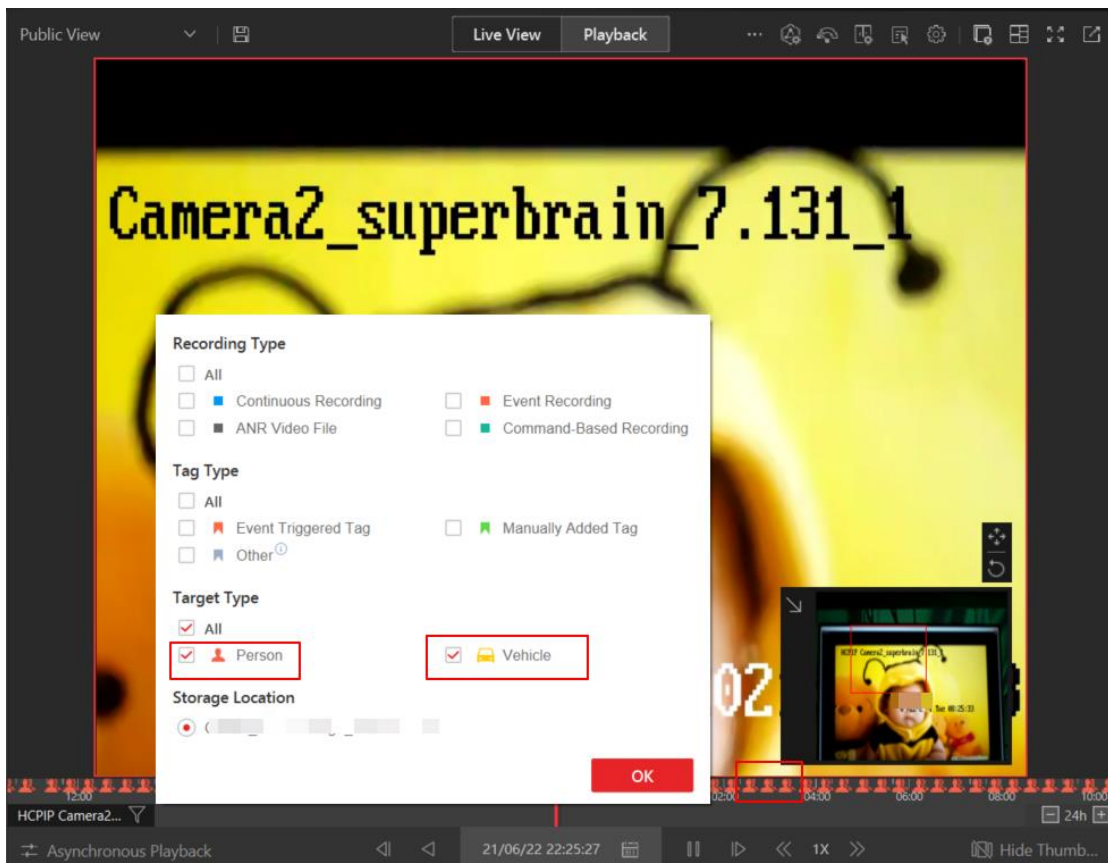
1. On the Control Client, fisheye Mounting Type and Expanding Mode is added.



2. On the Control Client, PTZ park action is added.

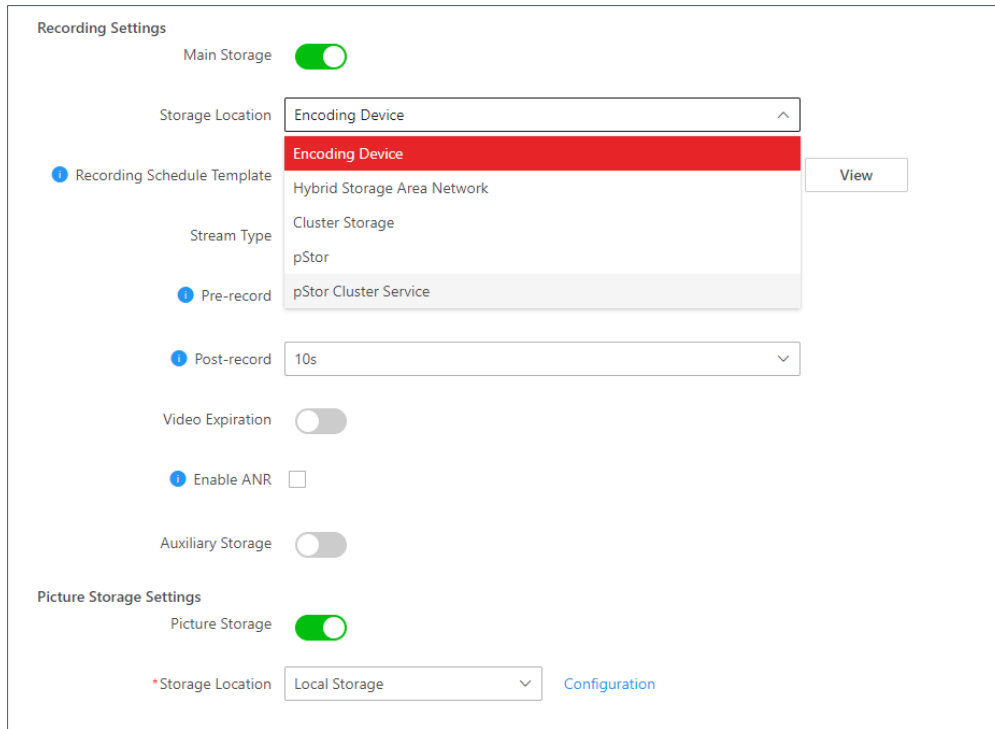


3. On the Control Client, a tag will appear in playback time bar if the target in the frame is a human or a vehicle (only works with hardware that has the capability to detect human/vehicles)



4. On the Web Client, added picture and video storage configuration, and video can be stored in the main storage including Encoding Device, Hybrid Storage Area Network, Cluster Storage, pStor, and pStor Cluster Service, while pictures can be stored in Local Storage, Hybrid Storage Area Network, Cluster Storage, pStor, and Network Video Recorder.



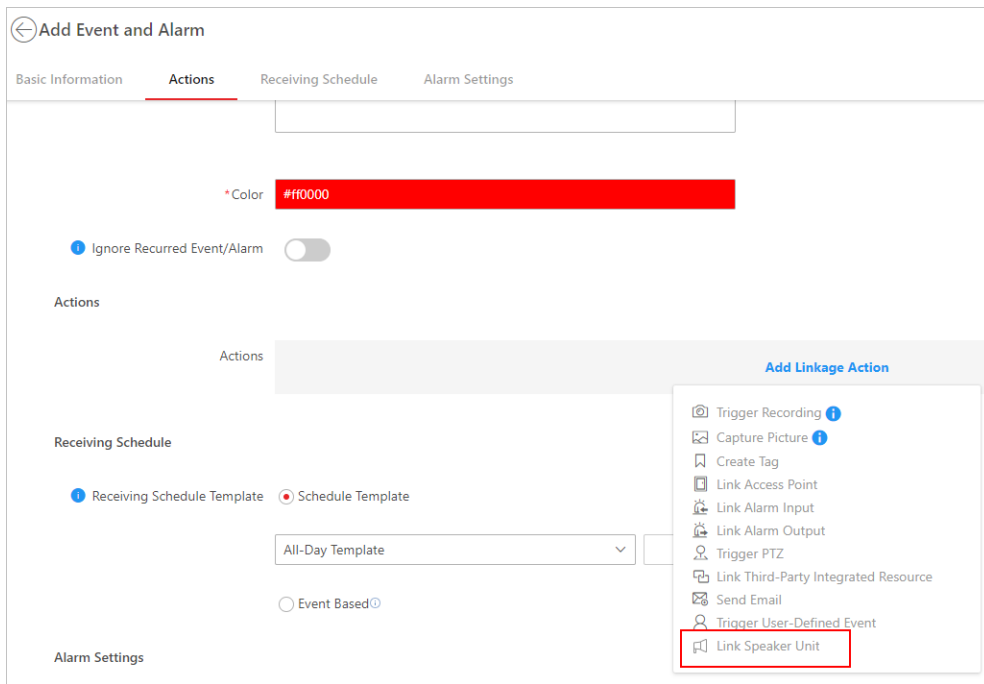


5. On the Mobile Client, added the display of overlay temperature information during live view and playback.

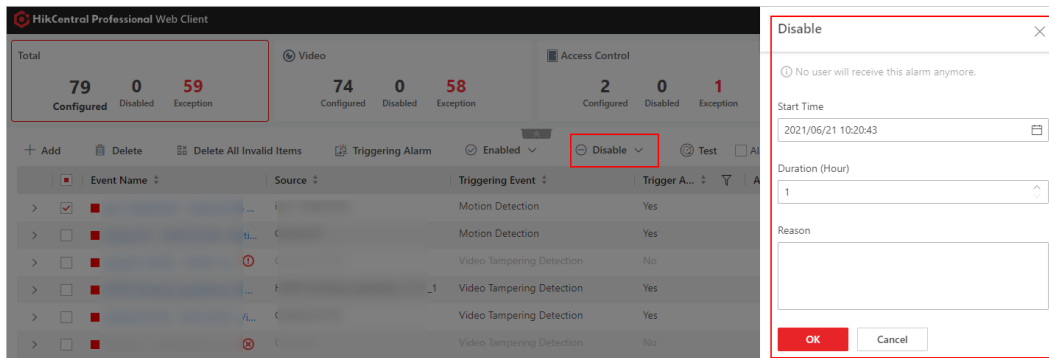
## Chapter 6 Event and Alarm

### 6.1 Added Features

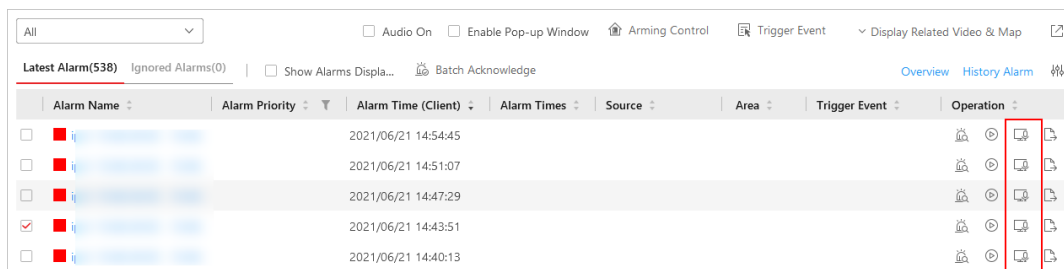
1. The Web Client supports adding Link Speaker Unit as the linkage action of an alarm. When the alarm is triggered, the linked speaker unit will broadcast the pre-defined audio.



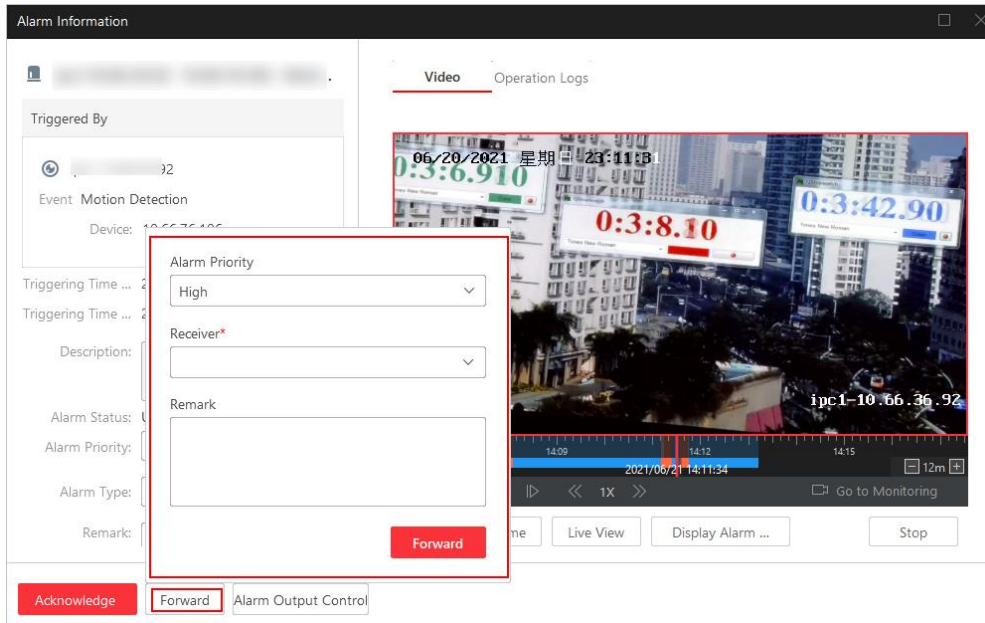
2. The Web Client supports disabling alarms at a certain time.



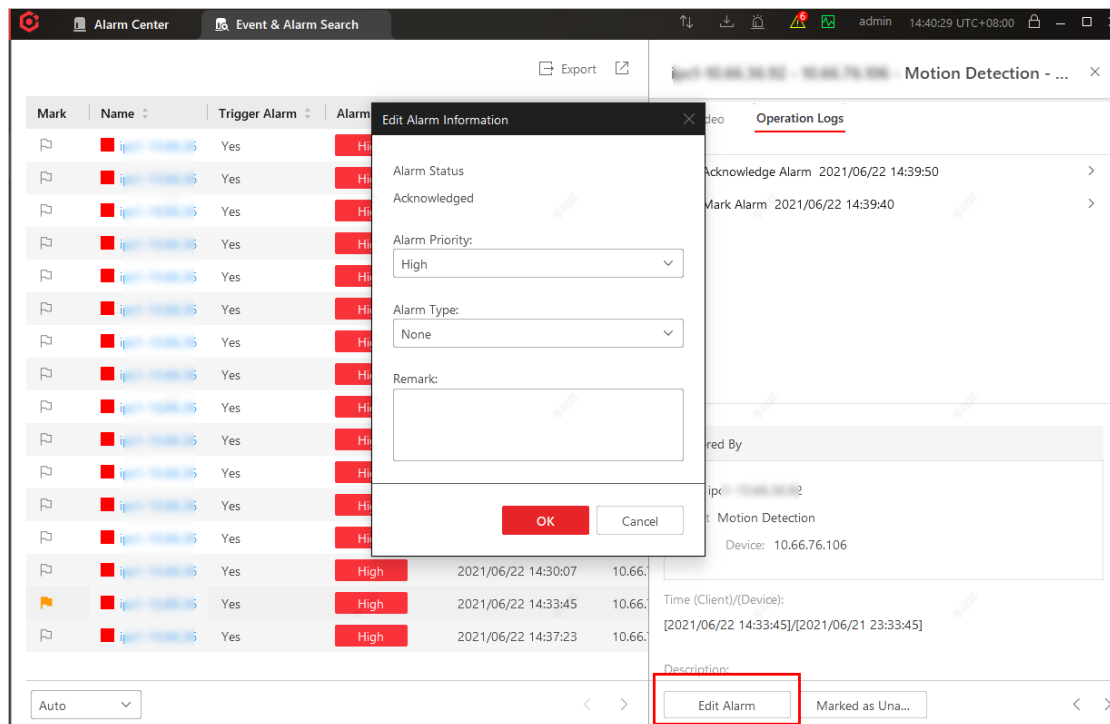
3. The Control Client supports starting broadcast and two-way audio with devices managed in a remote site.



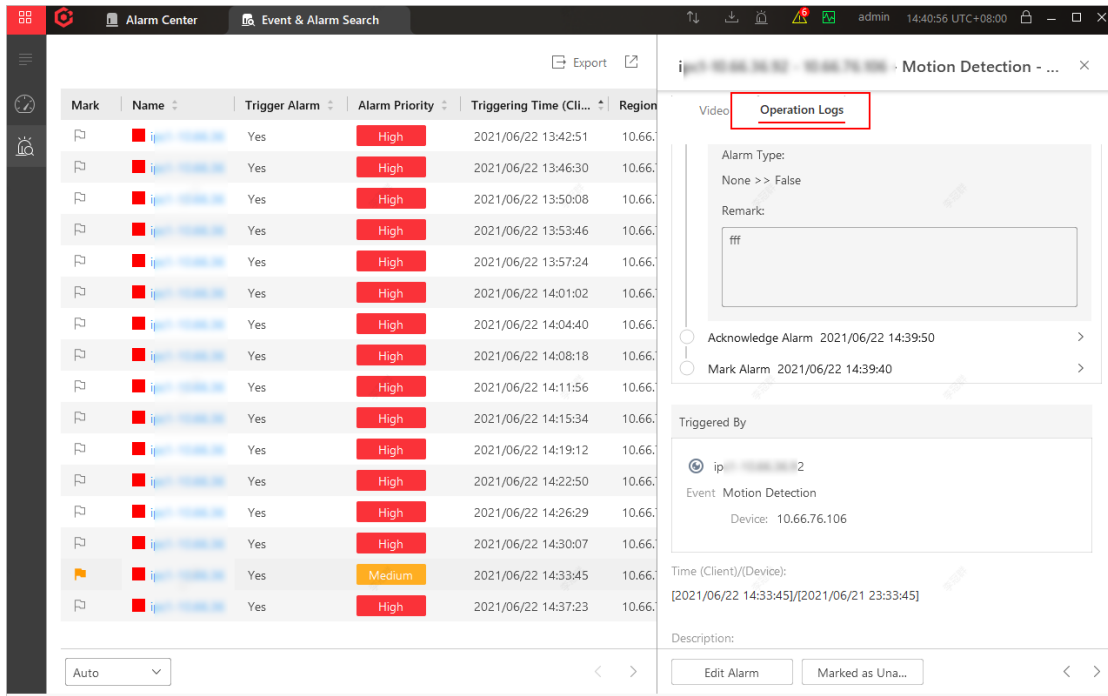
4. The Control Client supports forwarding an alarm to another user for notification.



- The Control Client supports editing alarm information (including alarm priority and alarm type) on the pop-up window. This helps users correct the alarm information on time when the alarm information needs to be changed.

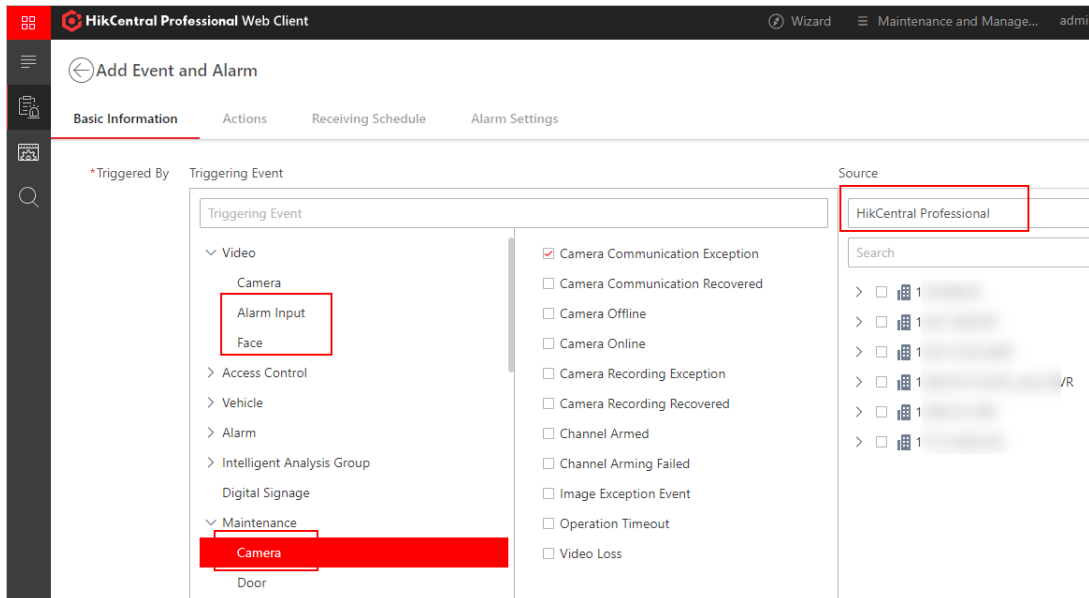


- The Control Client supports viewing the operation logs of an alarm.

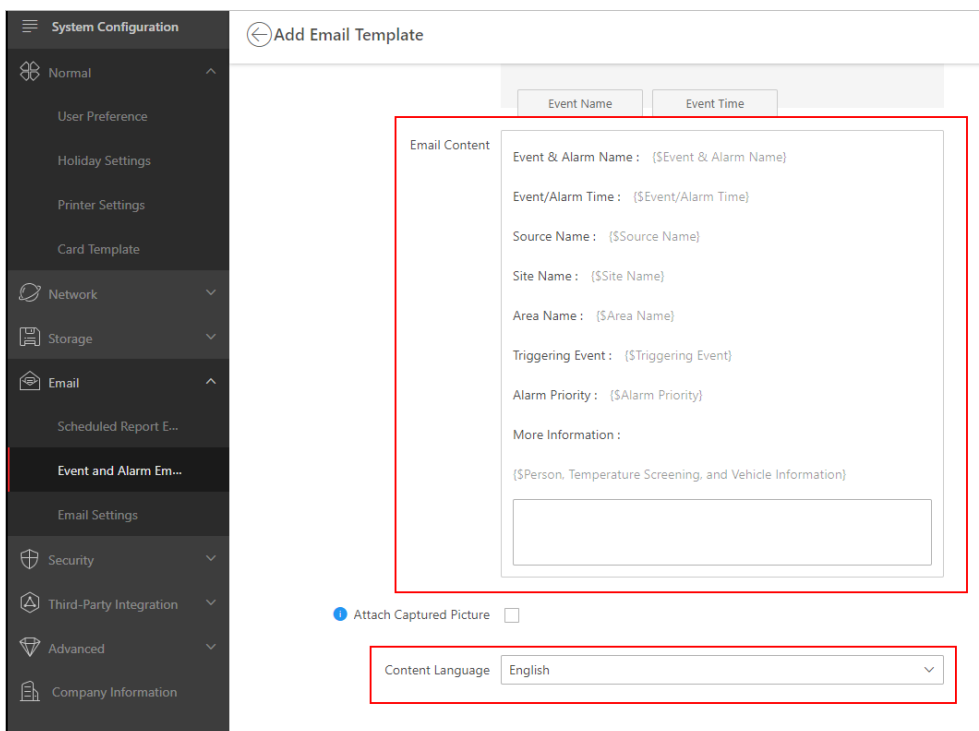


## 6.2 Updated Features

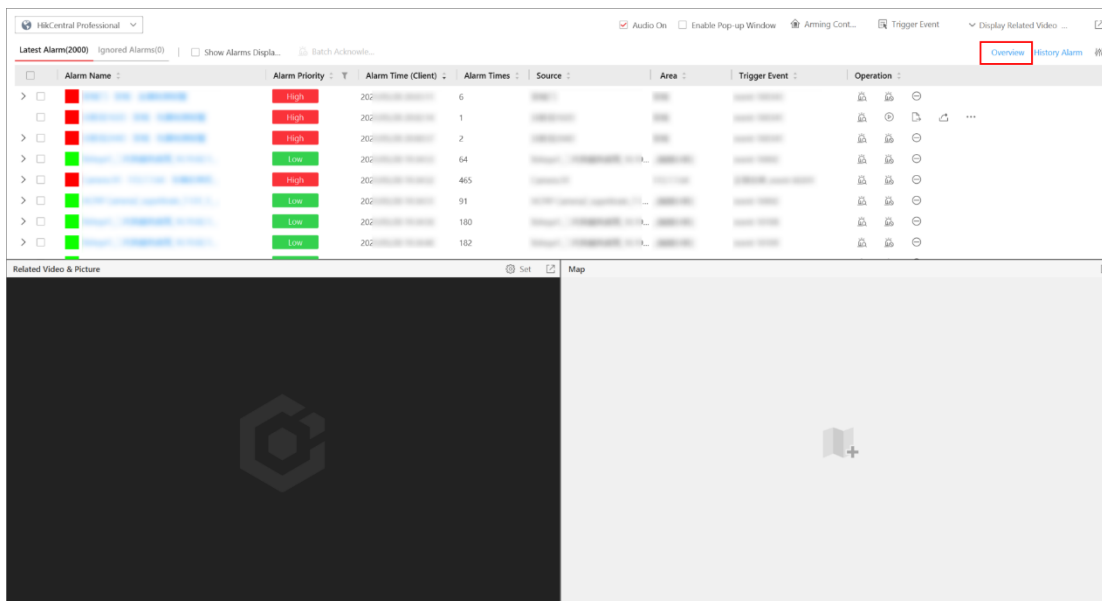
1. The Web Client (Add Event and Alarm page) supports selecting sources managed by a remote site when you select alarm input, face, and camera in Video and Maintenance as the triggering event.



2. Optimized the event and alarm email template. The Add Email Template page supports selecting default email content and email language. The email also supports displaying the information of combined alarms.



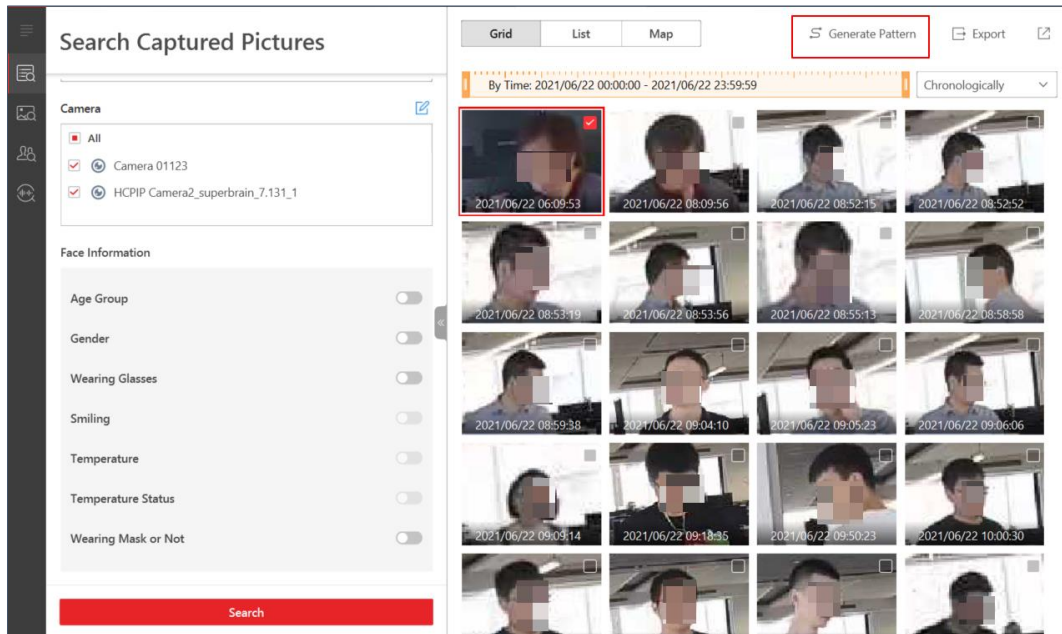
3. The central site supports receiving all the alarm triggered by encoding and decoding devices managed in a remote site.
4. On the Control Client, added the button of Overview. You can click it to enter the Alarm Overview page.



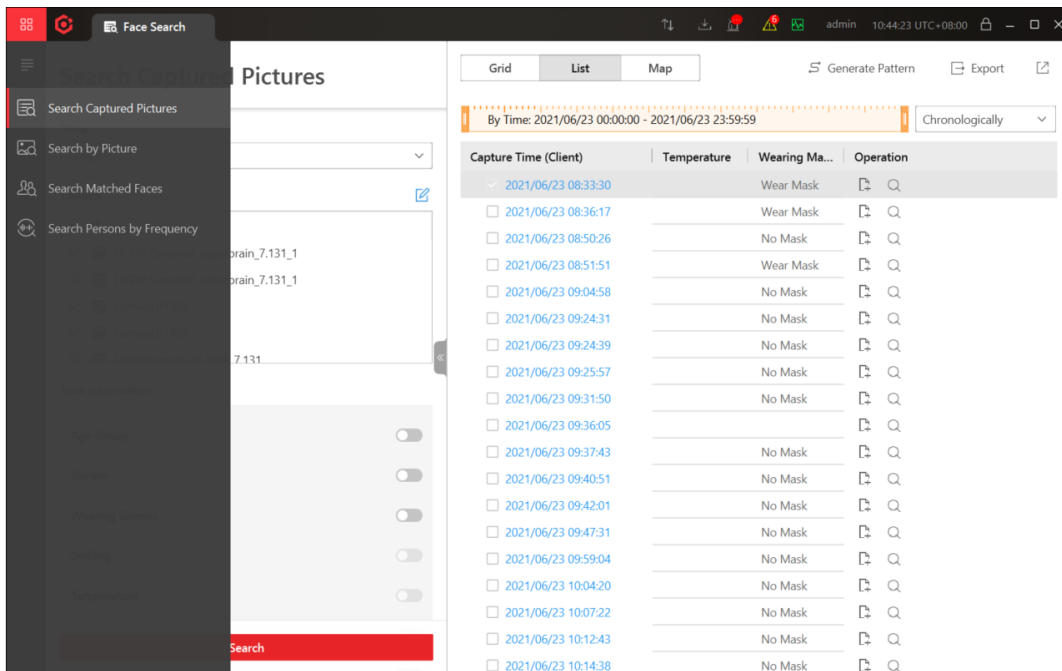
## Chapter 7 Investigation

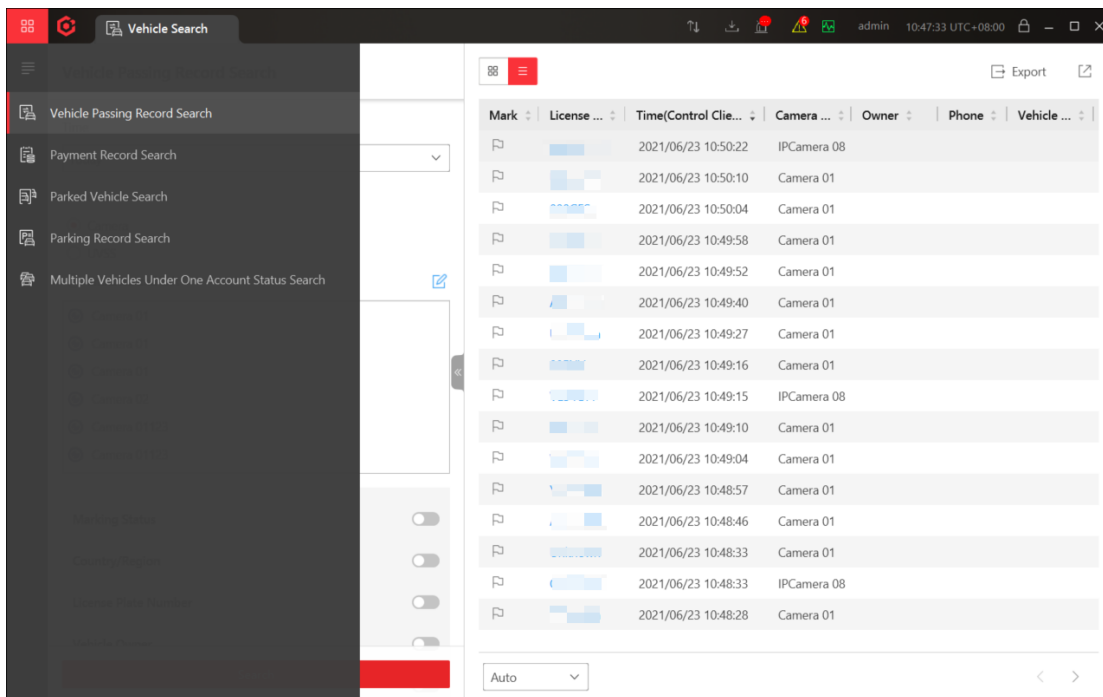
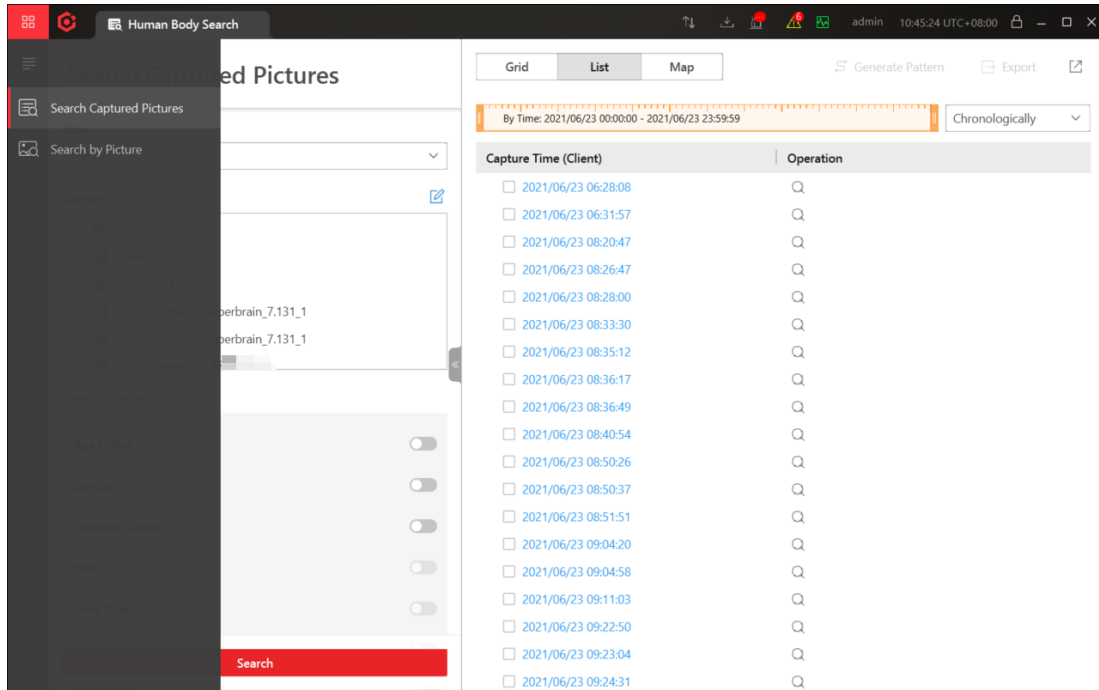
1. On the Control Client, added a feature of generating pattern of a target based on the results of face

search and human body search.



2. On the Control Client, updated intelligent monitoring and search including face, human body, and vehicle search.





## Chapter 8 Person Management

1. Supports authentication only via the password.

**Authenticate via Password**

Authenticate via Password

PIN Code Update Mode  Manual

Update Automatically

Notify the users of updating PIN codes, or the attendance results and access control data may be affected. A Pin code should contain 4 to 8 characters.

**Save**

2. Supports importing persons in security groups of the active directory to the platform.

3. The Web Client supports exporting profile pictures from HikCentral Professional to the local PC. The exported profile pictures can be used as face data for other systems or used for other purposes.

Profile Pictu...	Name	ID	Person/Visitor	Phone No.	Person Group	Credential I...
<input checked="" type="checkbox"/>	Tea XU	305	Normal Person	/	Test zyt 1	x1
<input checked="" type="checkbox"/>	Sherry LI	304	Normal Person	/	Test zyt 1	x1

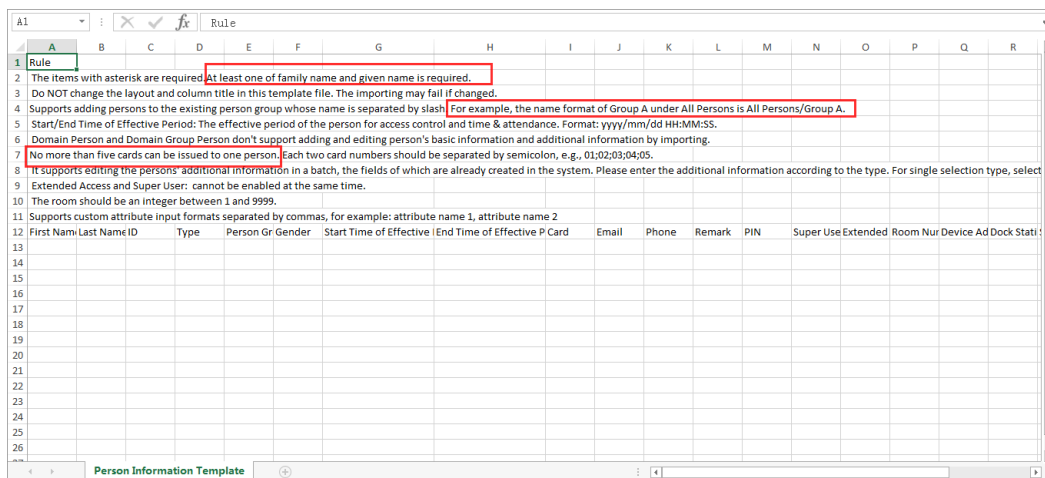
4. The Web Client supports automatically verifying whether a person already exists on the platform (basing on ID) when you batch adding persons by importing an XLSX template file or a ZIP file



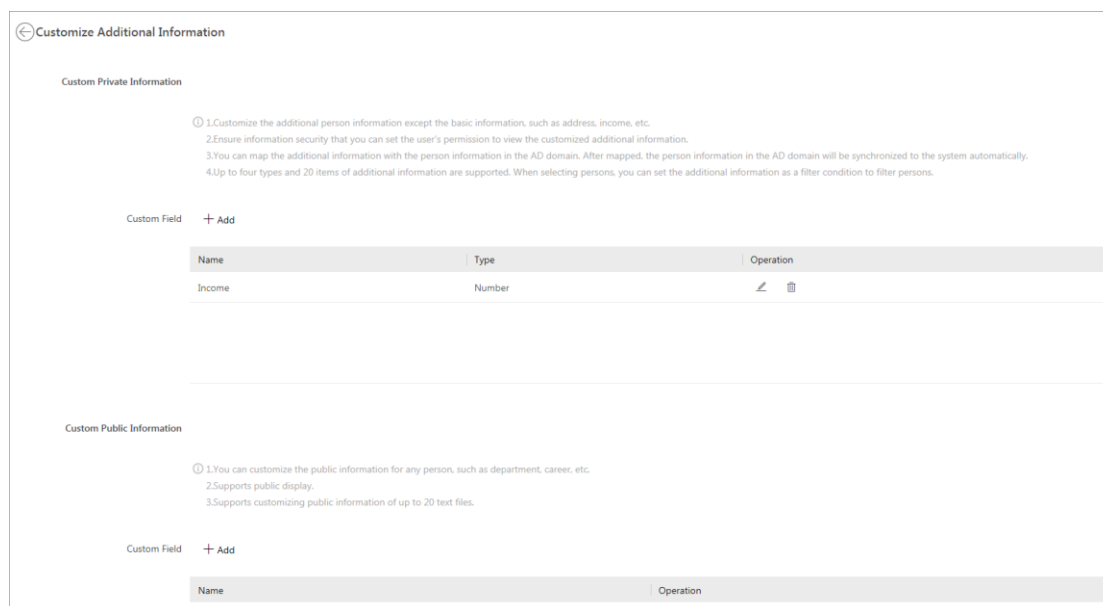
containing the profile pictures.

5. If a same ID exists, the imported person name will overwrite the existing one.
6. The Web Client supports more rule instructions on the XLSX template for importing person information. The updated instructions include:
  - At least one of family name and given name is required.
  - Supports adding persons to the existing person group whose name is separated by slash. For example, the name format of Group A under All Persons is All Persons/Group A.
  - No more than five cards can be issued to one person. Each two card numbers should be separated by semicolon, e.g., 01;02;03;04;05.

In addition, three originally required items, including first name, last name, and person group, are optional now.

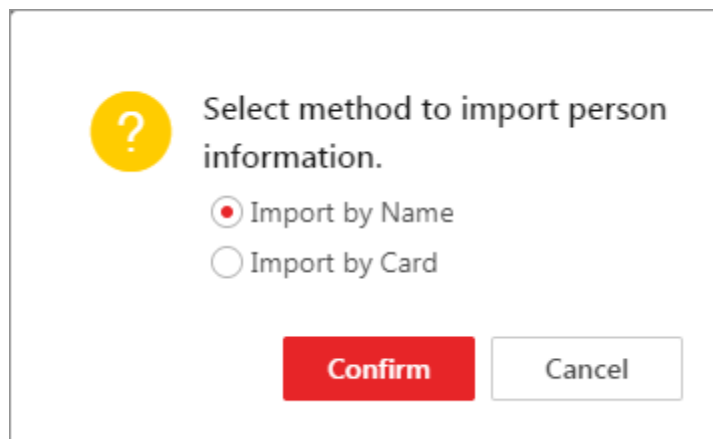


7. The Web Client supports filling in up to five card numbers for one person in the XLSX template for importing person information. The card numbers need to be separated by semicolon in one table cell. In this way, you can batch set up to five cards for each person.
8. The Web Client supports setting private information (e.g., salary) and public information (e.g., department) for persons.



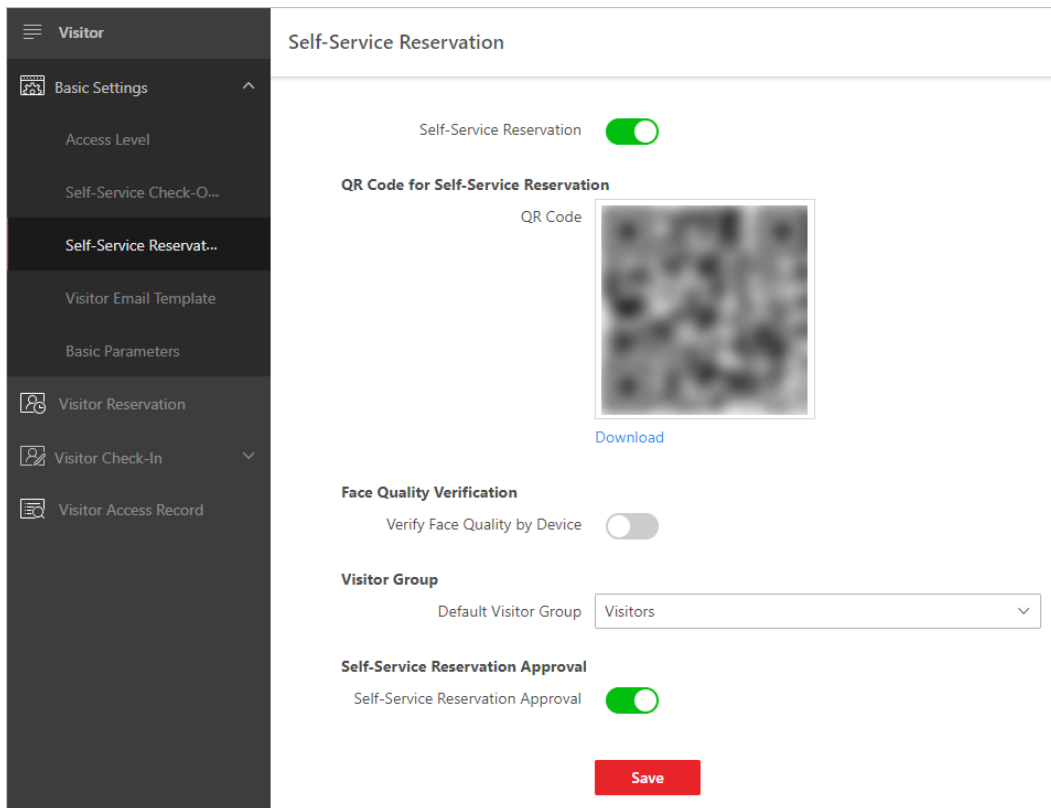
9. The Web Client supports issuing cards via a new model of enrollment stations: DS-K1F600U-D6E-F.

- The supported communication methods include USB and ISUP 5.0.
  - The supported card types include DESfire and Felica.
10. The Web Client supports using the default templates or customized templates to print physical cards for persons under the premise that the models of the connected printers are Zebra ZXP series 3 or IDP Smart 51 ID Card Printer.
11. The Web Client supports setting the method (Import by Name or Import by Card) to import persons from access control devices.
- Import by Name: the person information directly linked to access control devices will be imported.
  - Import by Card: the person information linked to the cards of access control devices will be imported.

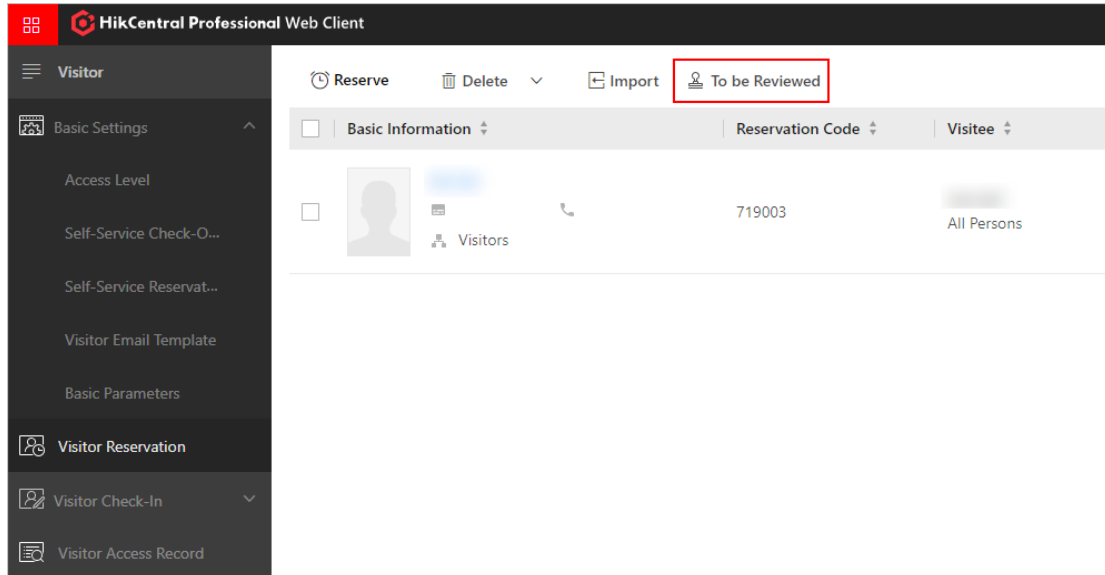


## Chapter 9 Visitor Management

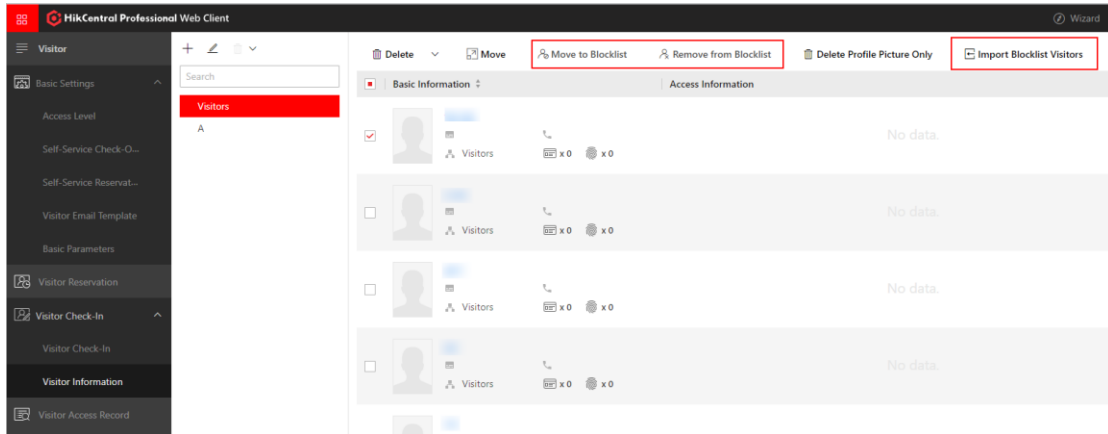
1. The Web Client supports a visitor reserving for him/herself (the visatee's employee ID is required), and supports a visatee reserving for a visitor. The Web Client can generate and print a QR code, after which the visitor or visatee scan the QR code by a smart phone to enter the reserving page.



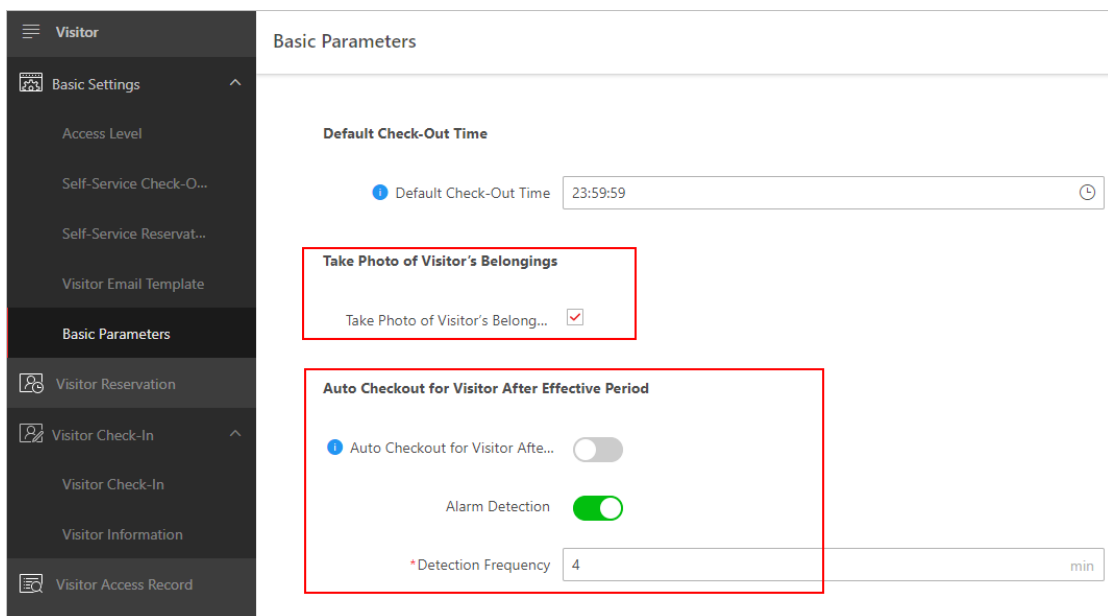
2. The Web Client supports reviewing and approving visitors' reservations by checking the visitor information.



3. The Web Client supports adding a visitor to the blacklist to forbidden reserving and checking in for the visitor.

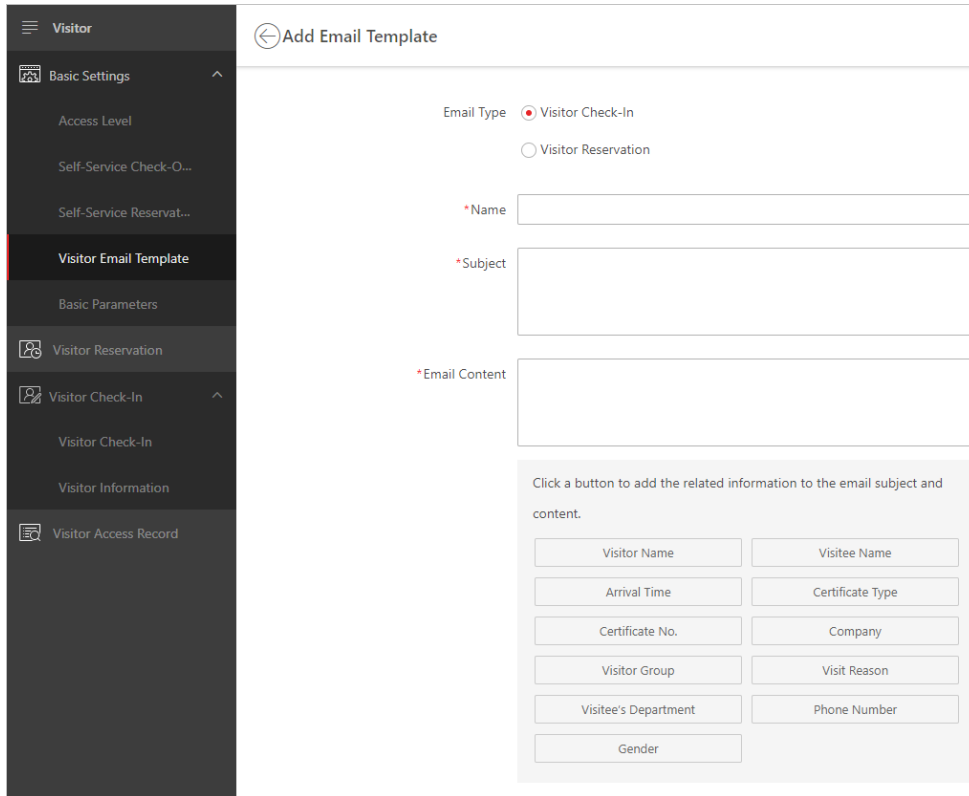


4. The Web Client supports taking a photo of a visitor’s belongings when checking in/out.



5. The Web Client supports configuring alarm detection frequency. After enabling this function, an alarm will be triggered when the platform discovers a visitor who does not check-out before the end time of visit.

6. The Web Client supports setting templates of emails sent to visitors



## Chapter 10 Access Control and Elevator Control

### 10.1 Added Features

1. Improved the capability of skin-surface temperature screening: supports temperature screening configuration and event management via ISUP.
2. Support authentication only via the password.

#### Authenticate via Password

Authenticate via Password

PIN Code Update Mode  Manual

Update Automatically

Notify the users of updating PIN codes, or the attendance results and access control data may be affected. A Pin code should contain 4 to 8 characters.

Save

3. The face privacy protection schema meets the security requirement of GDPR.
4. Extended the video intercom capability: supports configuring and managing call schedule templates for video intercom to meet the requirement that callers are in different time zones.

+
+

All-Day Call Schedule Template f...

All-Day Call Schedule Template f...

Add Call Schedule Template

### Add Call Schedule Template

**Basic Information**

\* Name

Copy from  ▼

**Weekly Schedule**

Weekly Schedule Template Indoor Station Call Center Erase

	00	02	04	06	08	10	12	14	16	18	20	22	24
Sunday													
Monday													
Tuesday													
Wednesday													
Thursday													
Friday													
Saturday													

**Holiday Schedule**

Holiday Schedule + Add Holiday

Add
Cancel

5. Supports person private authentication mode and route anti-pass back.

Reader Authenticati...
Private Authenticati...

All Persons

Name	ID	Devices for Authentication	Operation
...	...	0	<a href="#">/</a> <a href="#">📄</a>
...	...	0	<a href="#">/</a> <a href="#">📄</a>
...	...	0	<a href="#">/</a> <a href="#">📄</a>
...	...	0	<a href="#">/</a> <a href="#">📄</a>
...	...	0	<a href="#">/</a> <a href="#">📄</a>
...	...	0	<a href="#">/</a> <a href="#">📄</a>
...	...	0	<a href="#">/</a> <a href="#">📄</a>
...	...	0	<a href="#">/</a> <a href="#">📄</a>
...	...	0	<a href="#">/</a> <a href="#">📄</a>
...	...	0	<a href="#">/</a> <a href="#">📄</a>

Total: 14
100 /Page ▼
< 1 >
1 / 1
Go

Devices for Authentication



If the settings changed, you should apply the changes to devices.

+ Add   
  Delete   
 Configure All   

<input type="checkbox"/>	Device Name	Authentication Mode
<input type="checkbox"/>	[Blurred]	Card
<input type="checkbox"/>	[Blurred]	Card and PIN
<input type="checkbox"/>	[Blurred]	Fingerprint

Total: 3   
    
 < 1 >   
  / 1   
 Go

Add Route Anti-Passback

\*Name

\*Card Reader Order

No more than 16 lower-level card readers can be set for a single card reader.

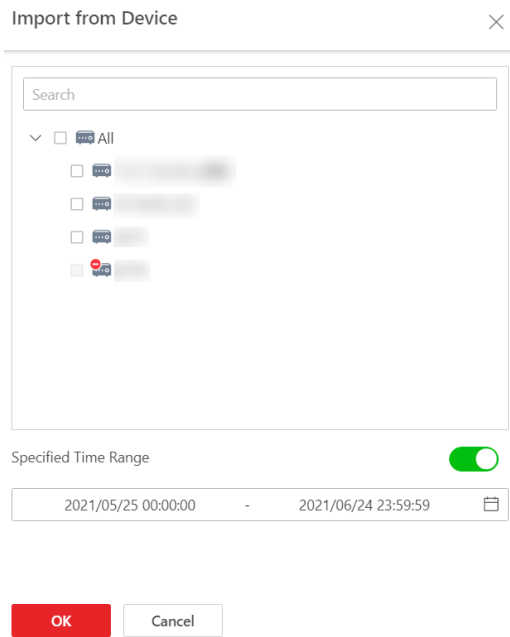
First Card Reader

If you violated the anti-passback rule, you should swipe the card again from the first card reader.

Forgive Anti-Passback Regularly

10.2 Updated Features

1. Enhanced the mechanism of synchronizing access records between access control devices and the platform: supports importing access records from devices and getting access records at a fixed time.

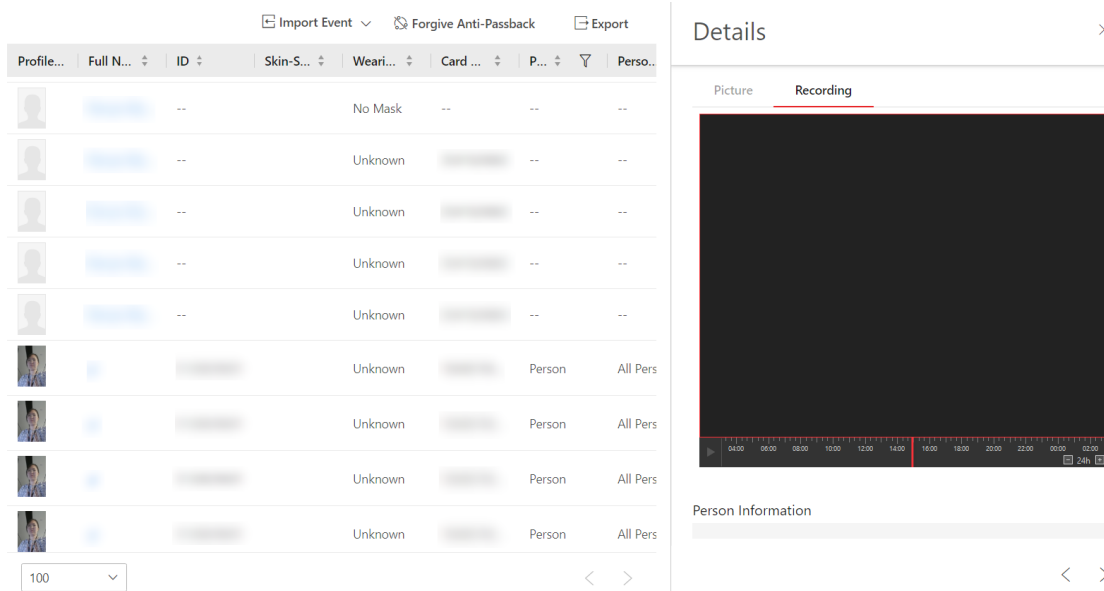


**Synchronize Records (Scheduled)**

Synchronize (Scheduled)

Synchronize At

2. Integrated access control with video: supports setting access control event linkage to link the camera for capturing and exporting the related videos along with the access records for behavior analysis.





← Add Door Station Call Schedule

\*Door Station

- ▼ [blurred]
- ▼ [blurred]
- ▼ [blurred]
- ▼ [blurred]

\*Call Schedule

Button	Call Schedule Template	Room

Add
Cancel

3. Supports saving pictures on the server locally for access control devices accessed via ISUP, which solves the problem that access control devices with a small number of channels in the public network depend on pStor for storage.
4. Extended the capability of managing person credentials: supports issuing cards to persons as needed, collecting ID cards, and exporting face pictures in a batch.

← Issue Card to Person

① The current issuing mode is Enter Manually. [Card Issuing Settings](#)

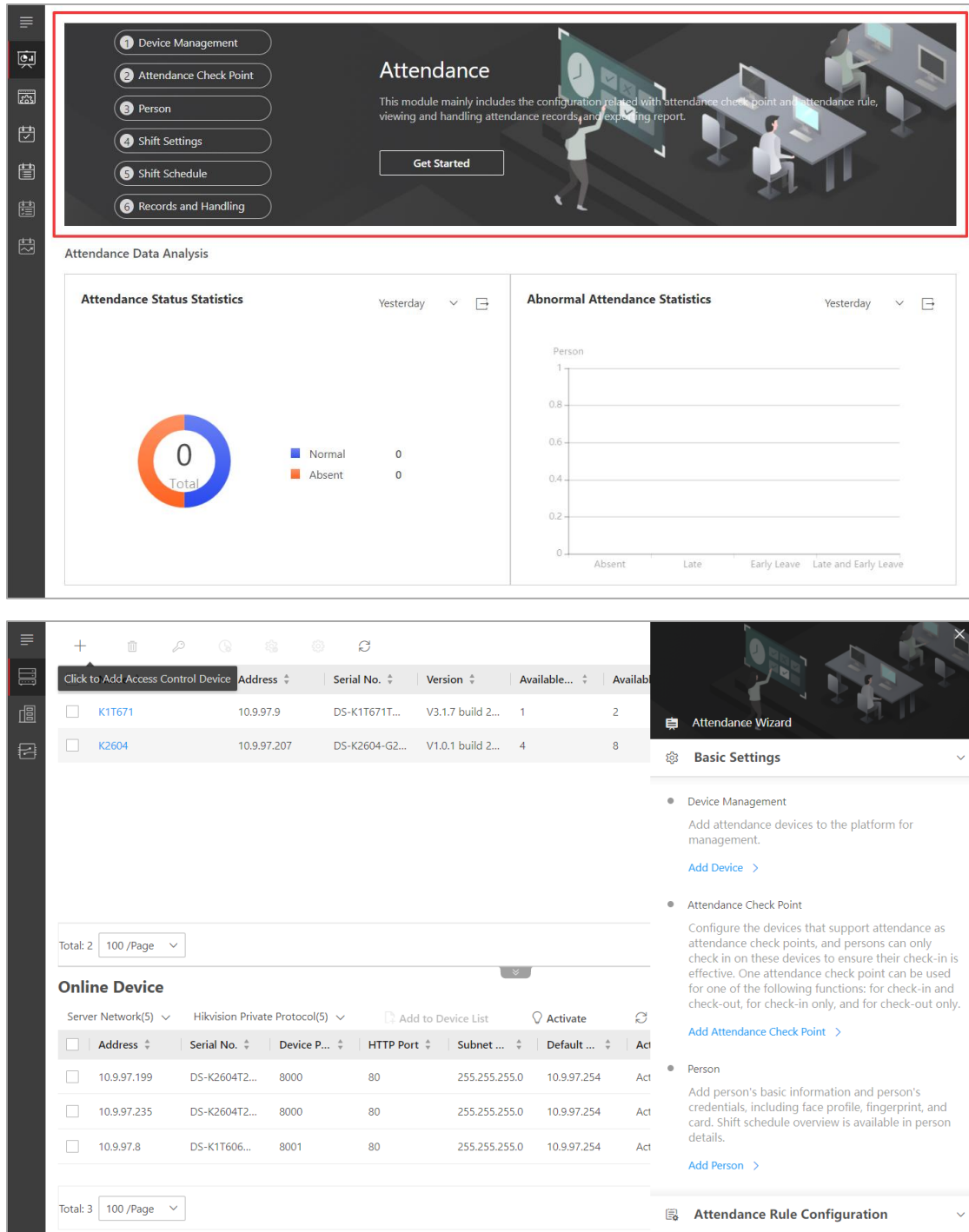
Issued / Total : 0/1

Name	ID	Card No.
[blurred]	[blurred]	<input style="width: 100%;" type="text"/>

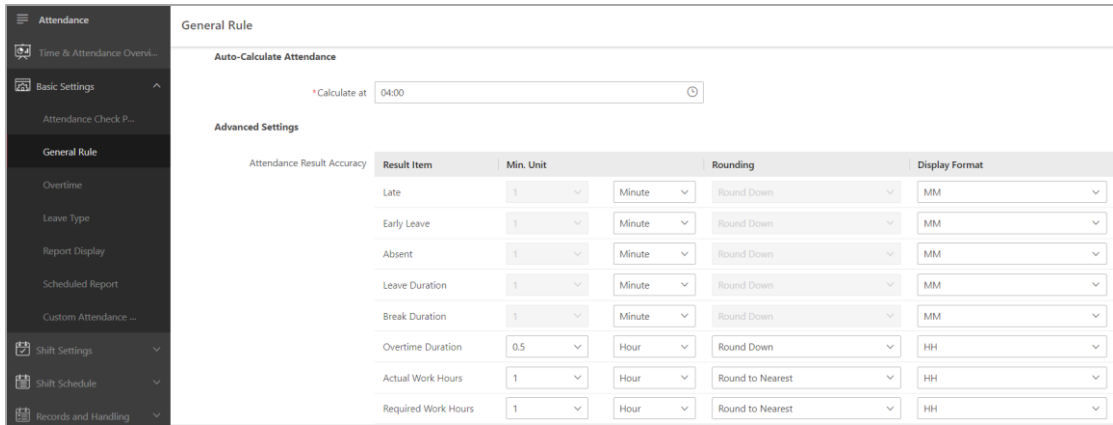
## Chapter 11 Time and Attendance

### 11.1 Added Features

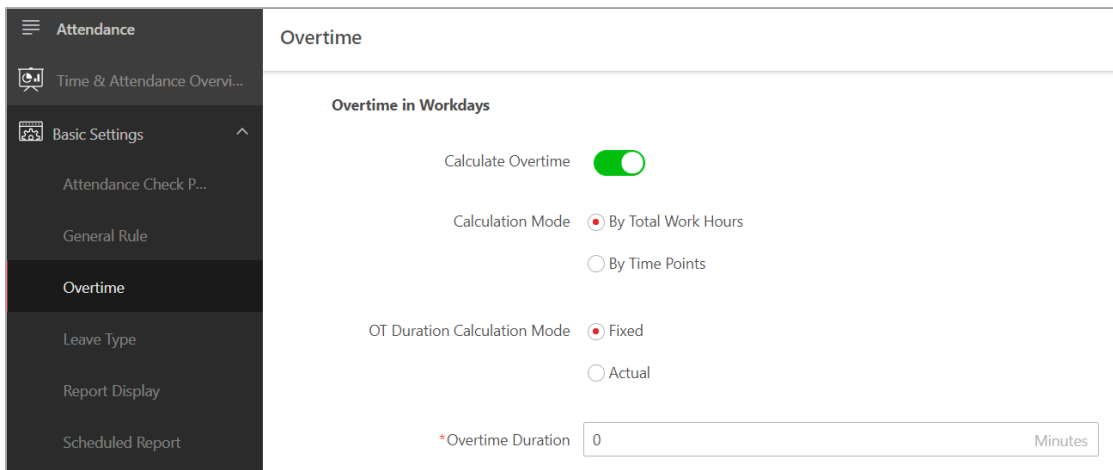
1. Added Attendance Wizard. On the Web Client, you can set up the entire attendance system from scratch with the guidance of the Attendance Wizard.



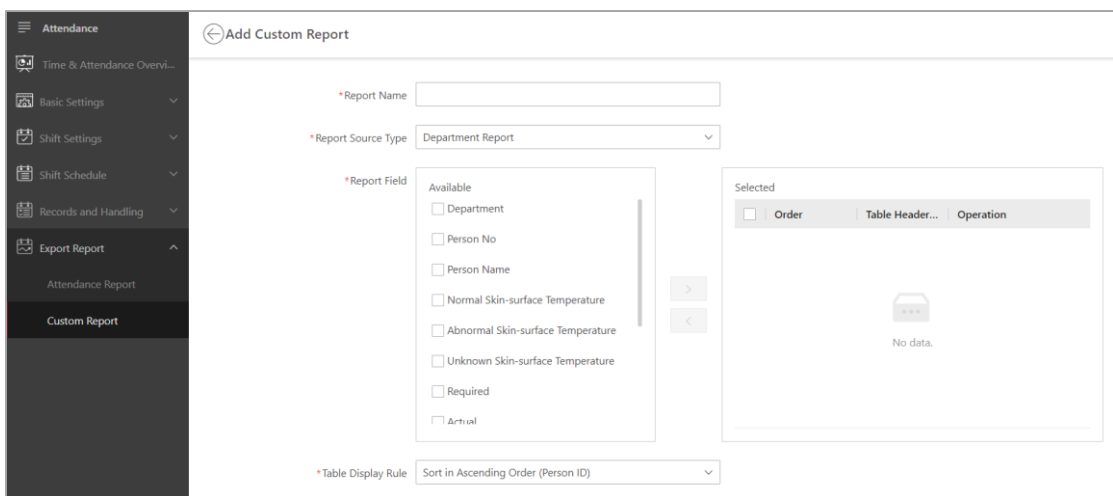
2. Supports setting attendance result accuracy. On the Web Client, you can set the precision of each attendance result to minute, hour, or day. You can control the rounding and display format of each data item. The data in attendance records will be displayed according the accuracy settings.



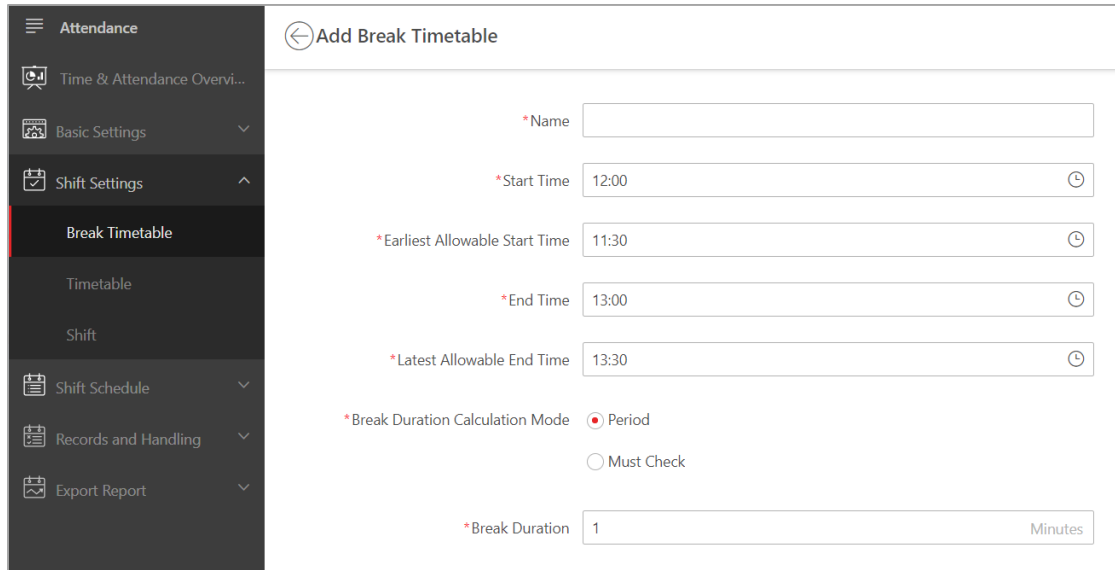
3. New overtime calculation options. The Web Client supports setting the overtime calculation mode to “By Total Work Hours” or “By Time Points”. When you select “By Total Work Hours”, you can set whether to set a fixed overtime duration or calculate the actual duration.



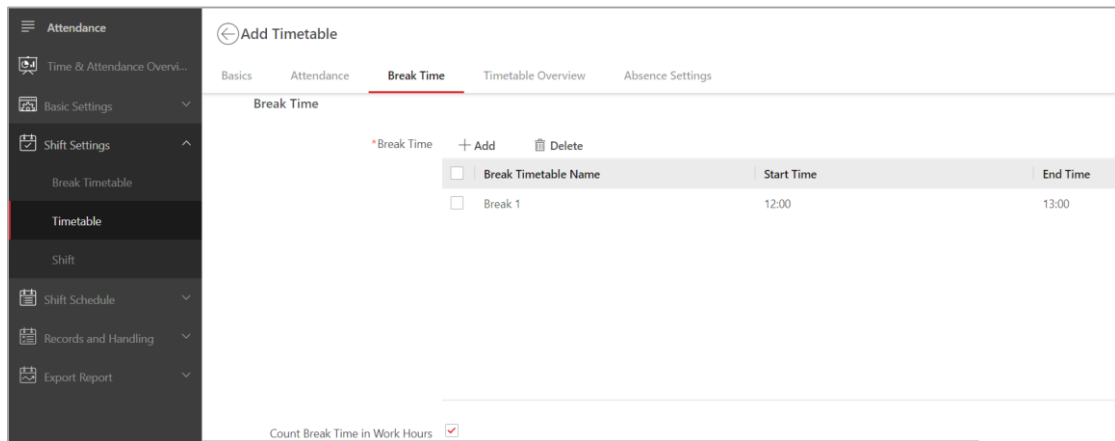
4. Supports customizing attendance reports. On the Web Client, you can customize the name, data items, and sorting order of an attendance report.



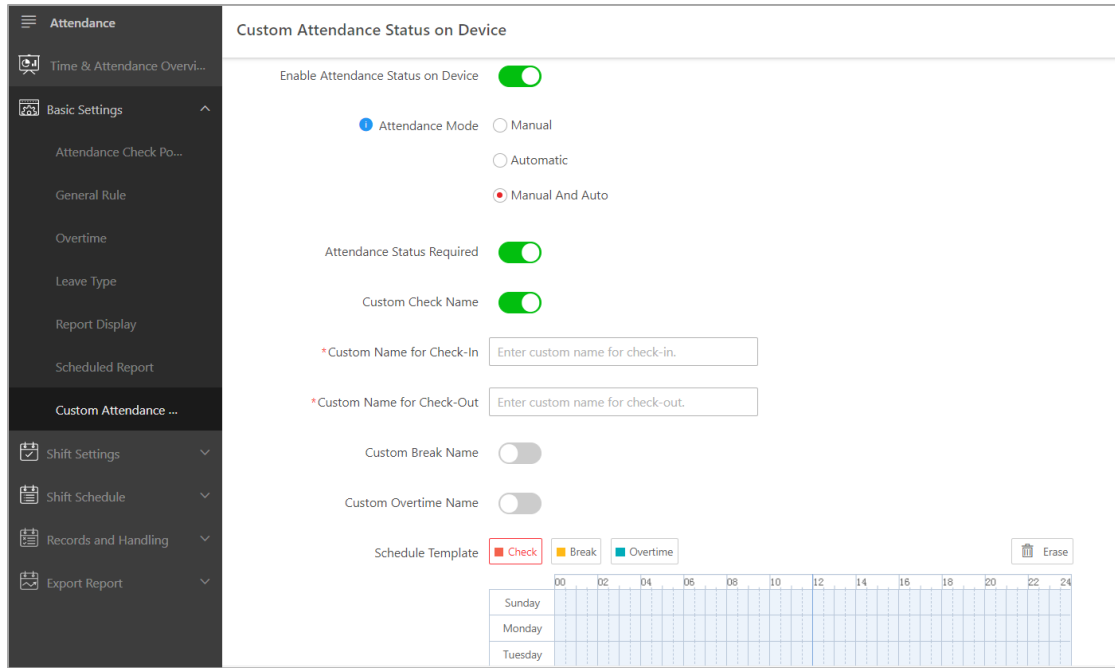
5. Supports setting break timetables. On the Web Client, you can add multiple break timetables to define different sets of break schedules.



- When setting a timetable, you can select the break timetables you added earlier to define the break schedule of the timetable.

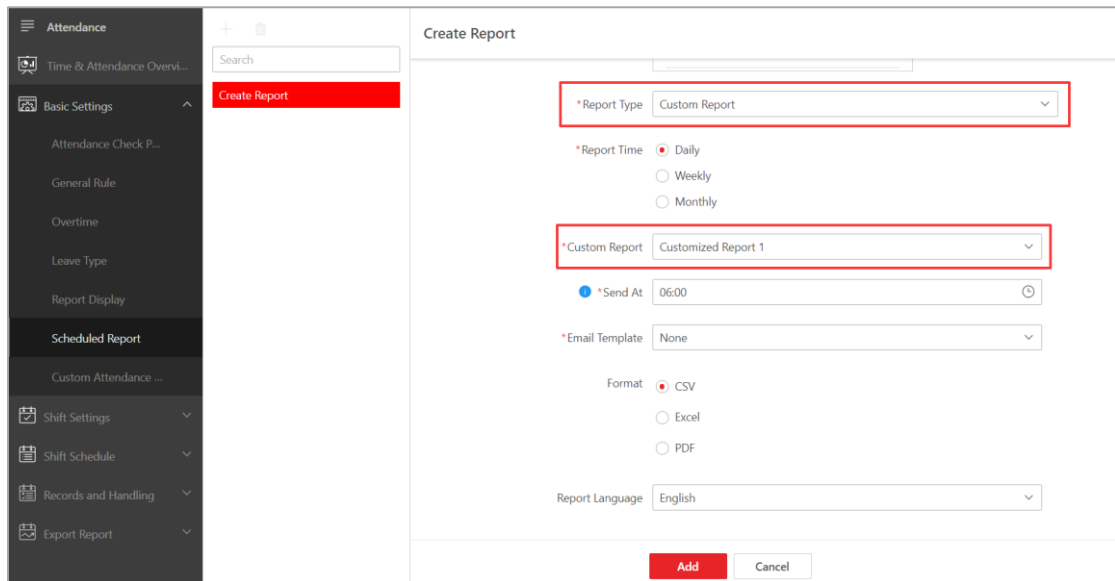


- Supports customizing the attendance status (T&A status) on attendance check devices. On the Web Client, you can change the attendance mode of the devices and customize the name and periods of each attendance status, including check-in/out, break time, and overtime.

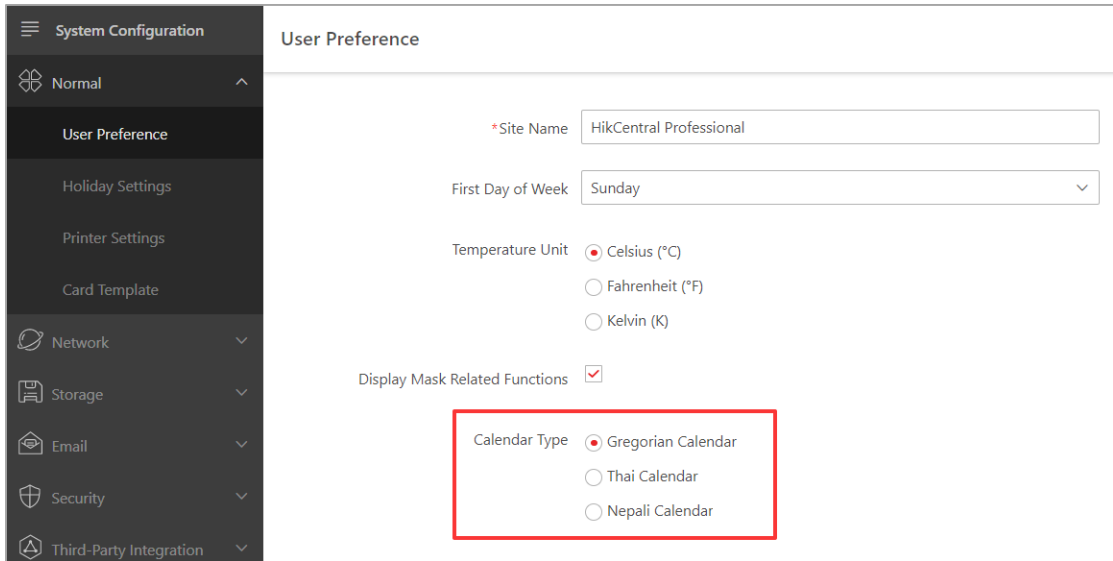


## 11.2 Updated Features

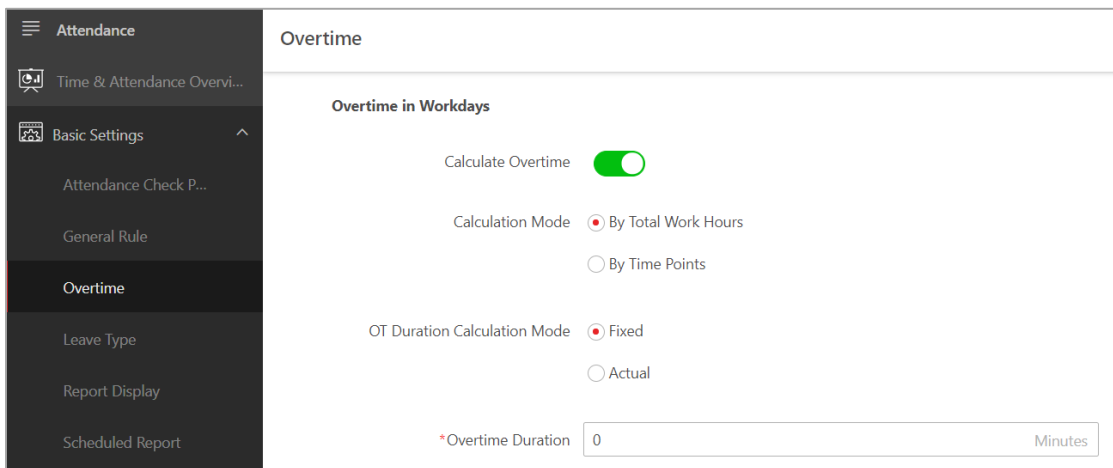
1. The Web Client supports adding up to 32 holidays.
2. Supports selecting a customized report when setting a report schedule.



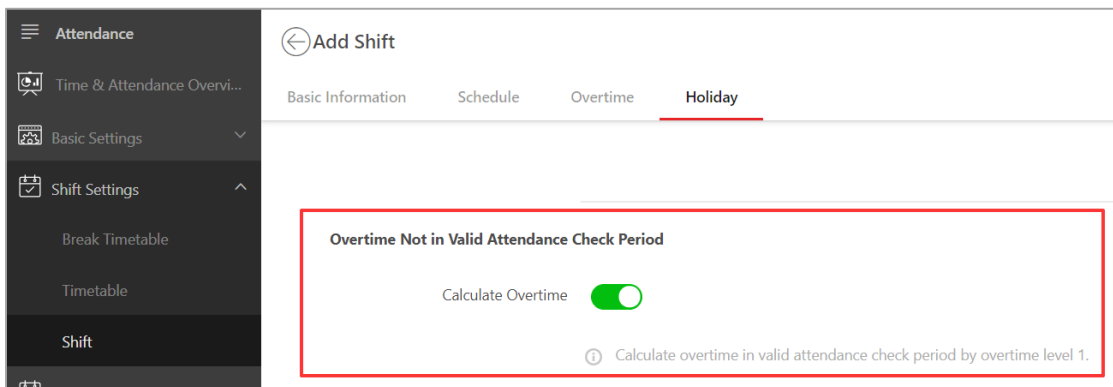
3. Supports new calendar types. On the Web Client, you can change the calendar type to Thai Calendar and Nepali Calendar.



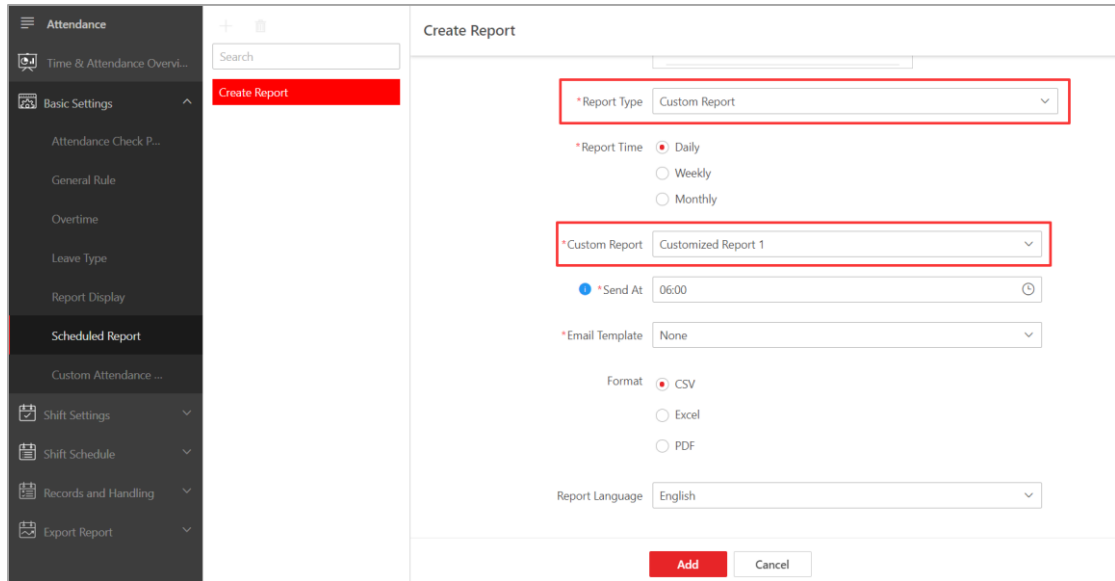
4. New overtime calculation options. The Web Client supports setting the overtime calculation mode to “By Total Work Hours” or “By Time Points”. When you select “By Total Work Hours”, you can set whether to set a fixed overtime duration or calculate the actual duration.



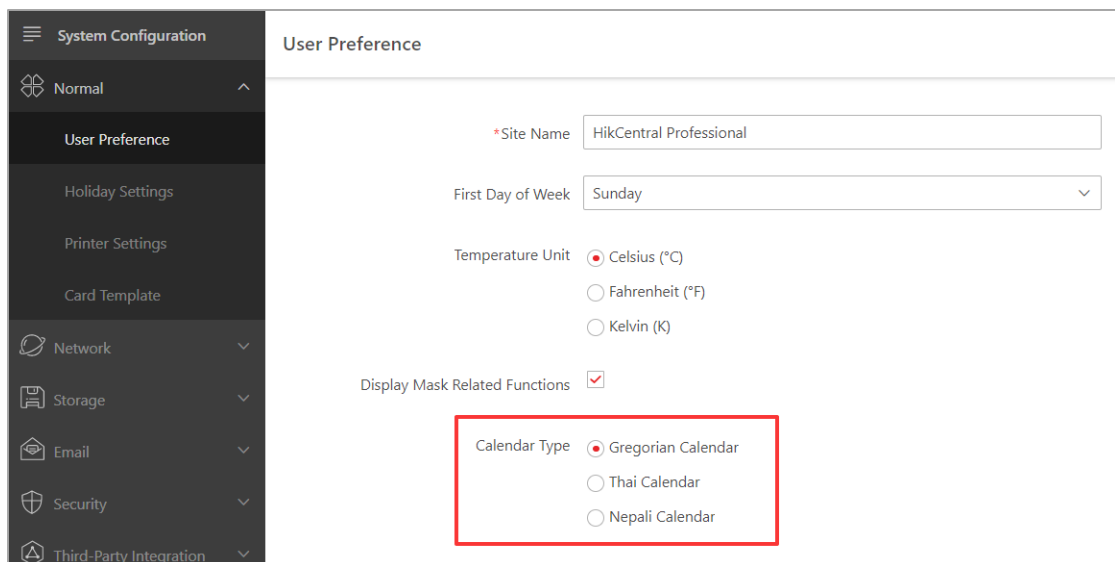
5. When setting a shift, you can also choose to calculate the overtime that is not in valid attendance check period.



6. Supports selecting a customized report when setting a report schedule.

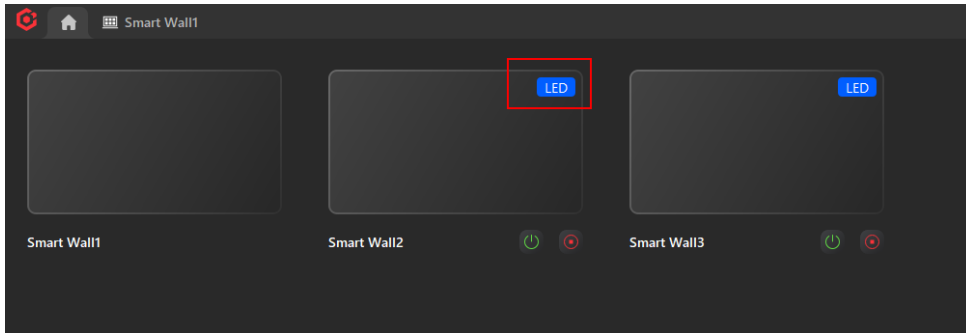


- Supports new calendar types. On the Web Client, you can change the calendar type to Thai Calendar and Nepali Calendar.

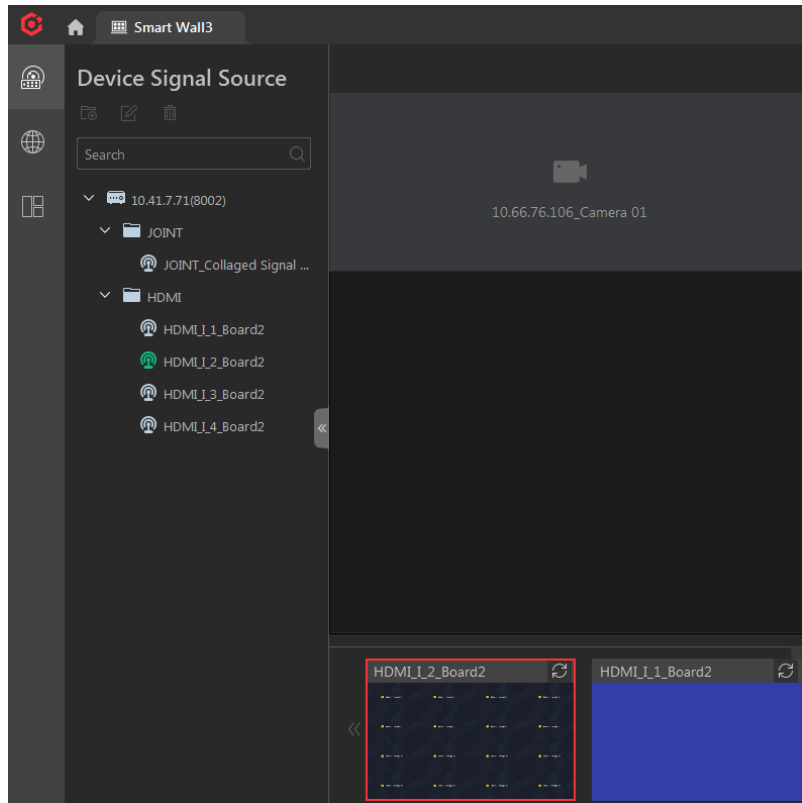


## Chapter 12 Smart Wall

- Supports displaying images on LED smart wall.

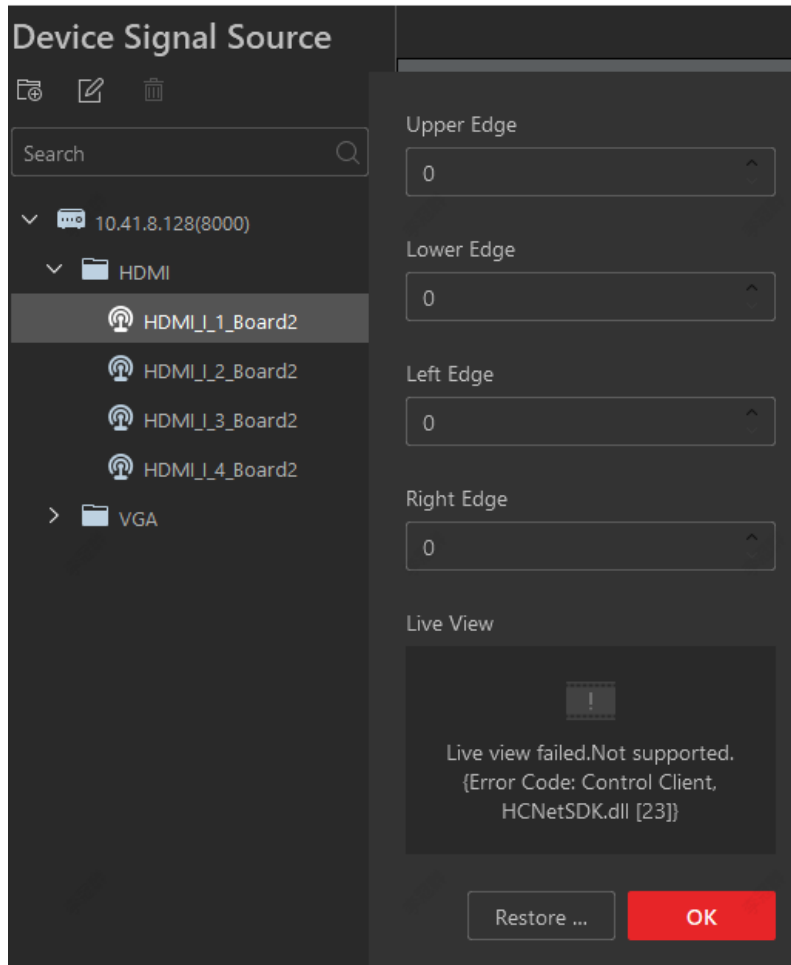


2. The Control Client supports displaying the local signal sources and connecting status

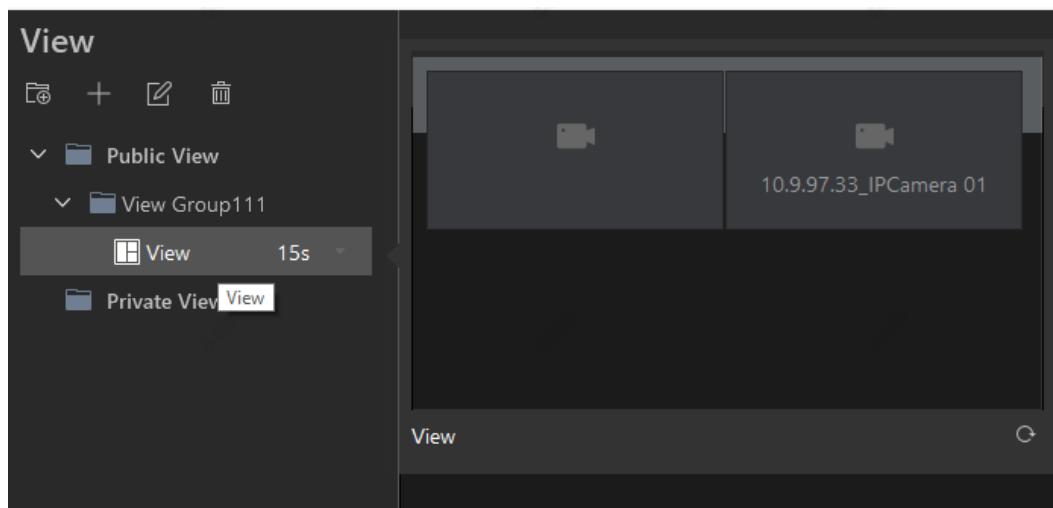


3. The Control Client supports trimming the window displaying the images of local signal sources.

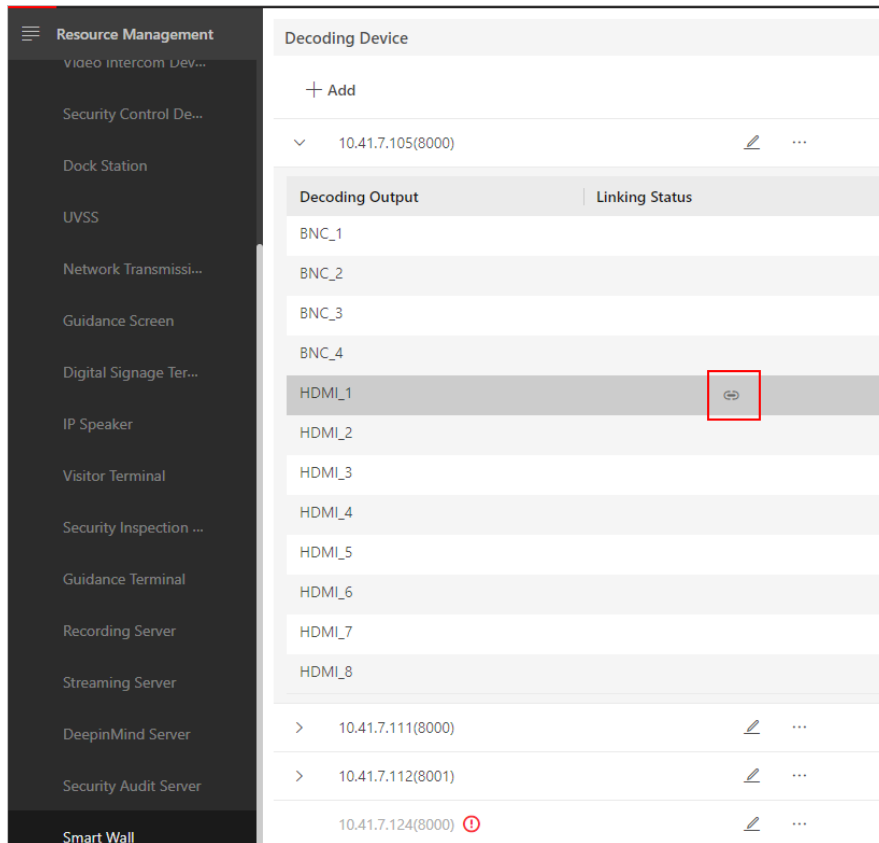




4. The Control Client supports dragging views for adjusting positions, editing views, and viewing the thumbnail images of a view before displaying its image on the wall.



5. The Web Client supports displaying the linking status between the decoding output and the smart wall.



6. On the Edit Decoding Device page, added the connection status of local signal sources and decoding outputs.

10.41.7.115(8012)

Basic Information   Network Location   **Local Signal Source**   Decoding Output

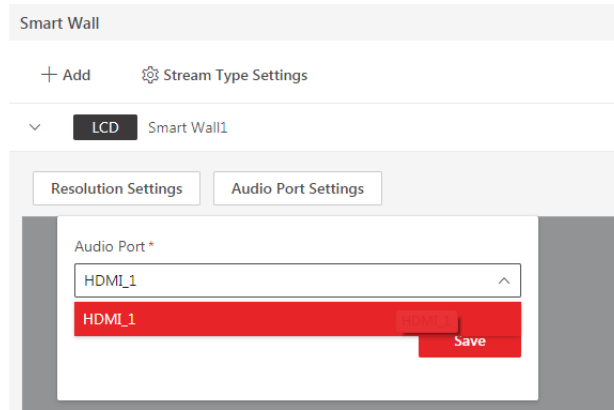
Local Signal Source(12)

Signal Source Information	Signal Source Name	Signal Source Type	Connection Status
	HDMI_1_Board1	HDMI	Not Connected
	HDMI_2_Board1	HDMI	Not Connected
	HDMI_3_Board1	HDMI	Not Connected
	HDMI_4_Board1	HDMI	Not Connected
	VGA_1_Board2	VGA	Not Connected
	VGA_2_Board2	VGA	Not Connected
	VGA_3_Board2	VGA	Not Connected

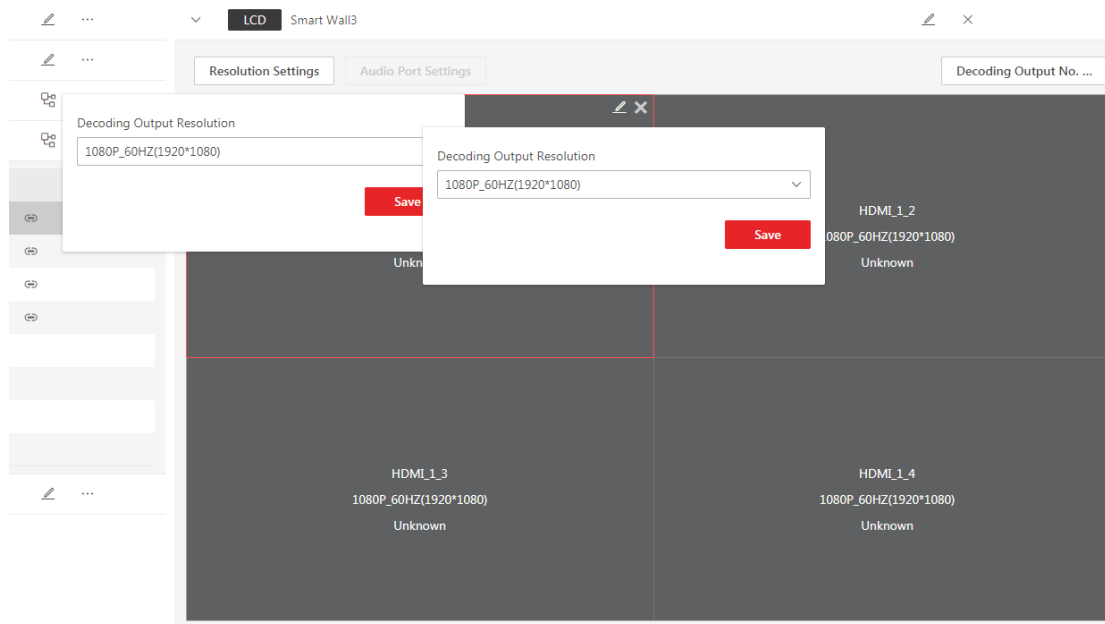
Decoding Output(12)

Signal Source Information	Decoding Output Name	Decoding Output Type	Decoding Output Resolution	Connection Status
	HDMI_1_1	HDMI	1080P_60HZ(1920*1080)	Not Connected
	HDMI_1_2	HDMI	1080P_60HZ(1920*1080)	Not Connected
	HDMI_1_3	HDMI	1080P_60HZ(1920*1080)	Not Connected
	HDMI_1_4	HDMI	1080P_60HZ(1920*1080)	Not Connected
	DVI_2_1	DVI	1080P_60HZ(1920*1080)	Not Connected
	DVI_2_2	DVI	1080P_60HZ(1920*1080)	Not Connected
	DVI_2_3	DVI	1080P_60HZ(1920*1080)	Not Connected

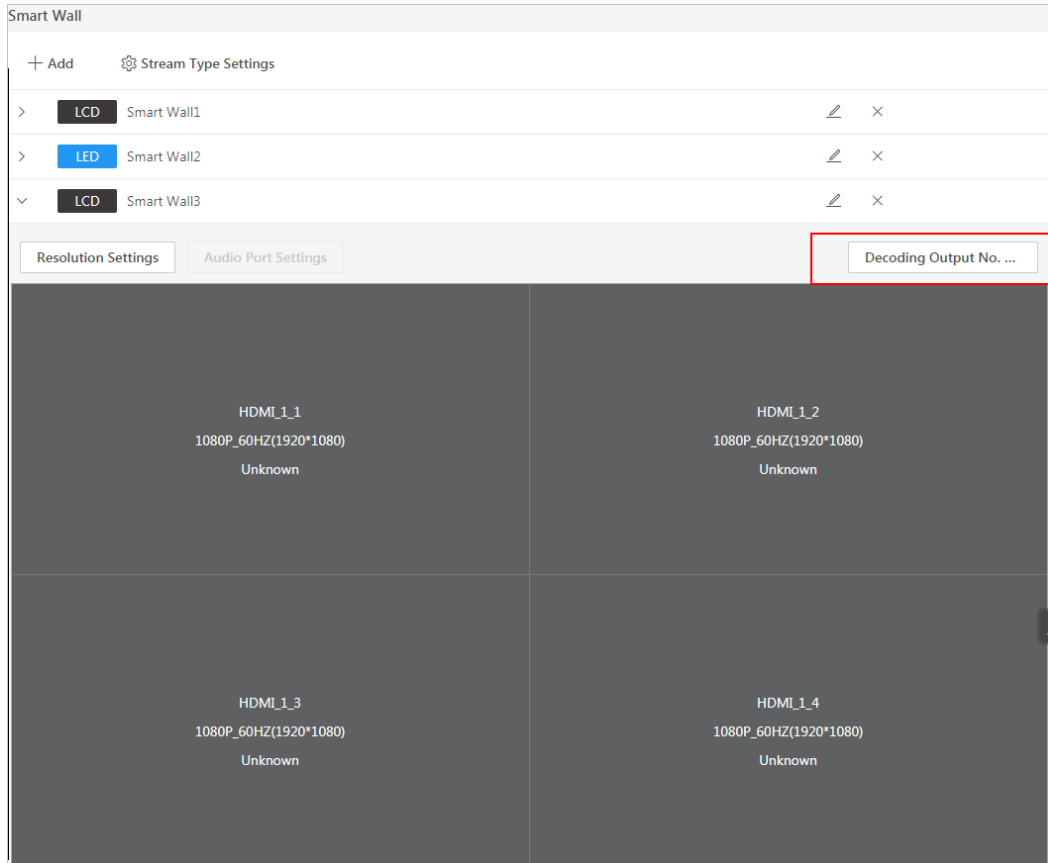
7. Supports setting audio port for the smart wall so that you can play the audio by the smart wall.



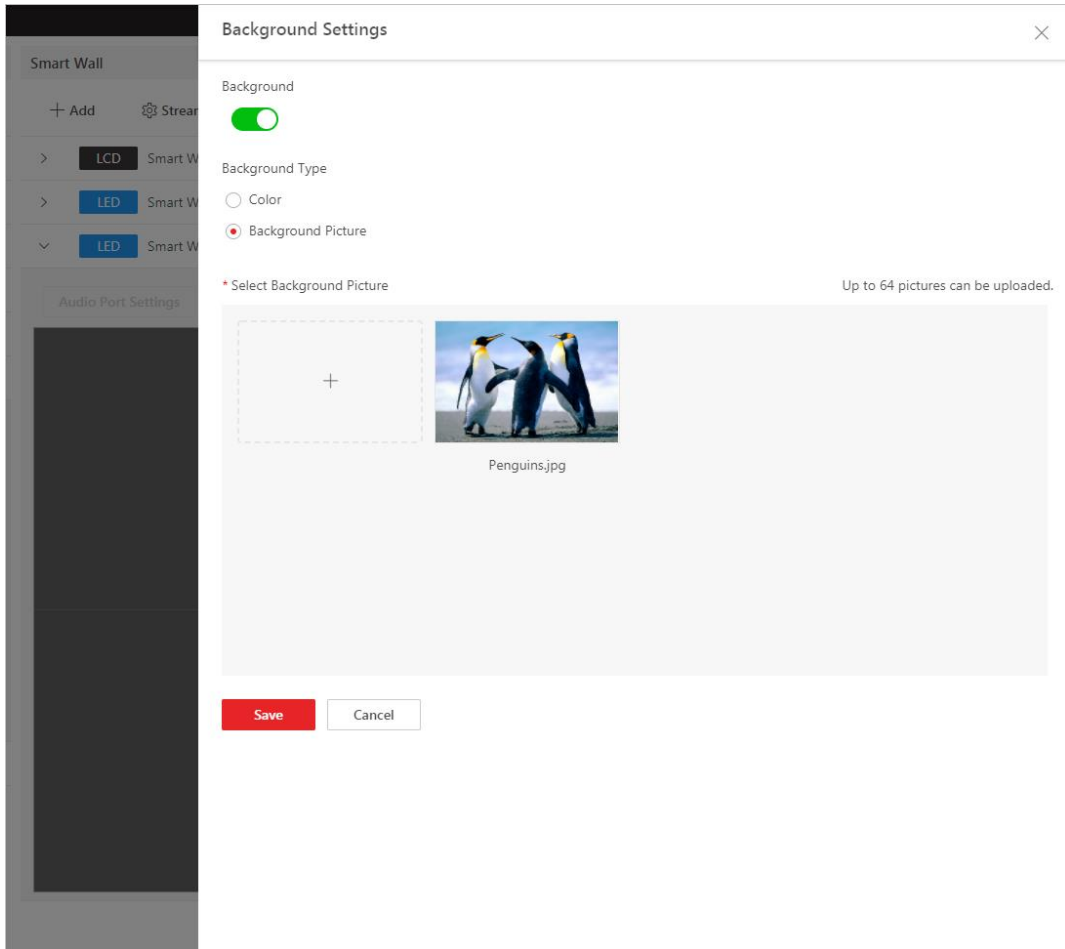
- 8. Supports configuring resolution for all the decoding outputs of a smart wall and editing the resolution of a decoding output.

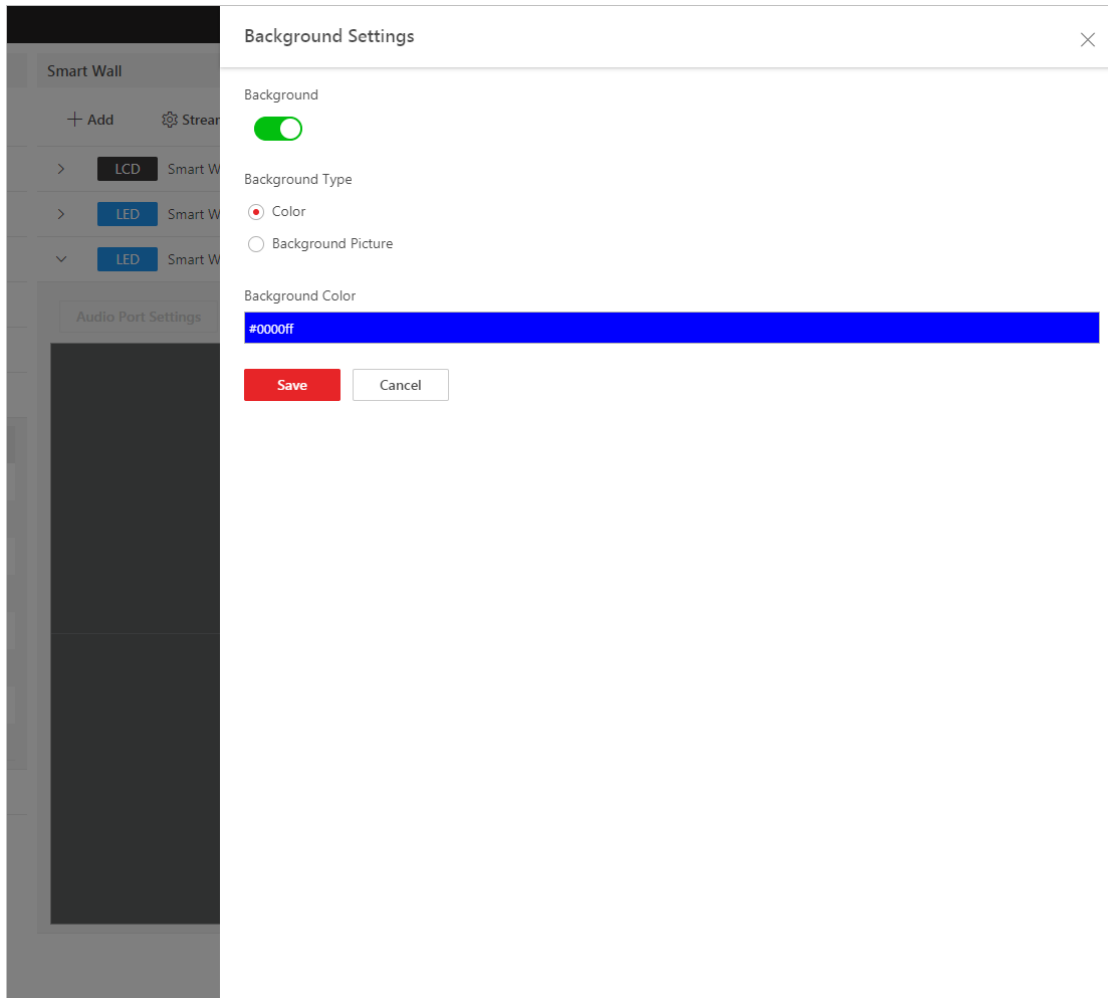


- 9. The Web Client supports displaying the No. of decoding output on the wall.

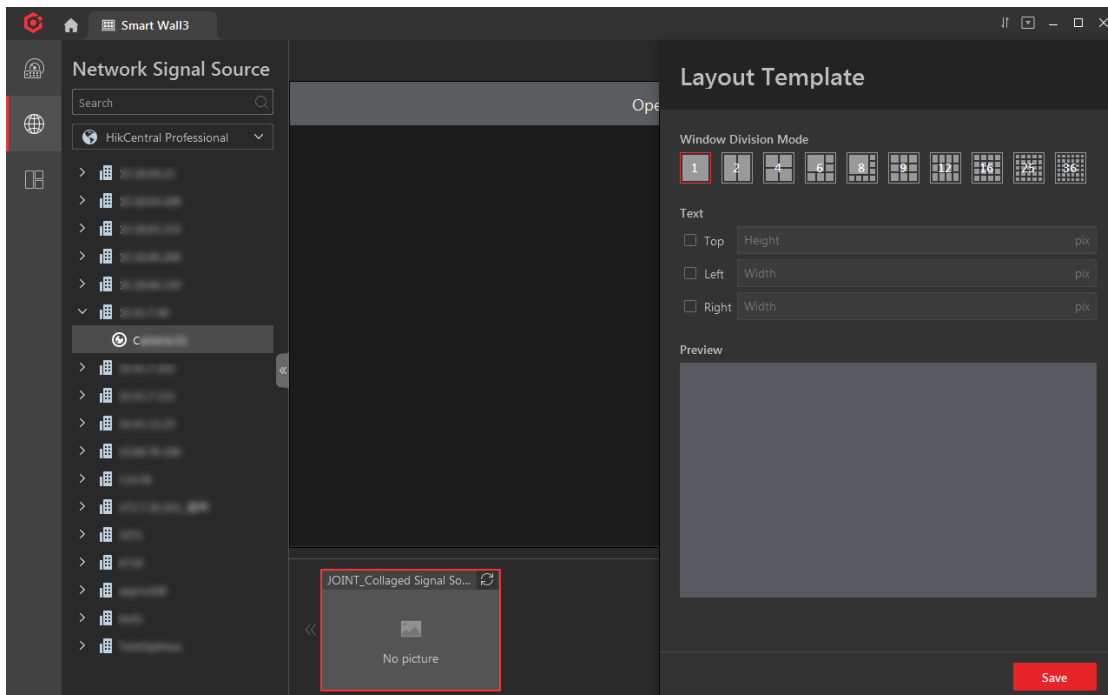


10. The Web Client supports configuring background picture and background color for the smart wall.

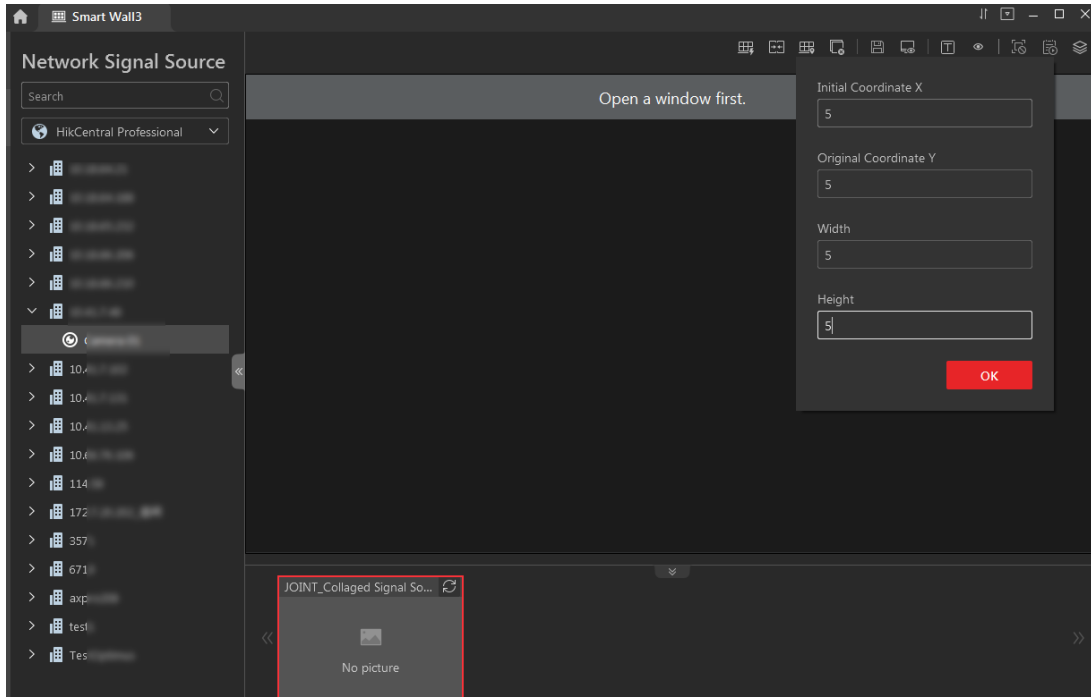




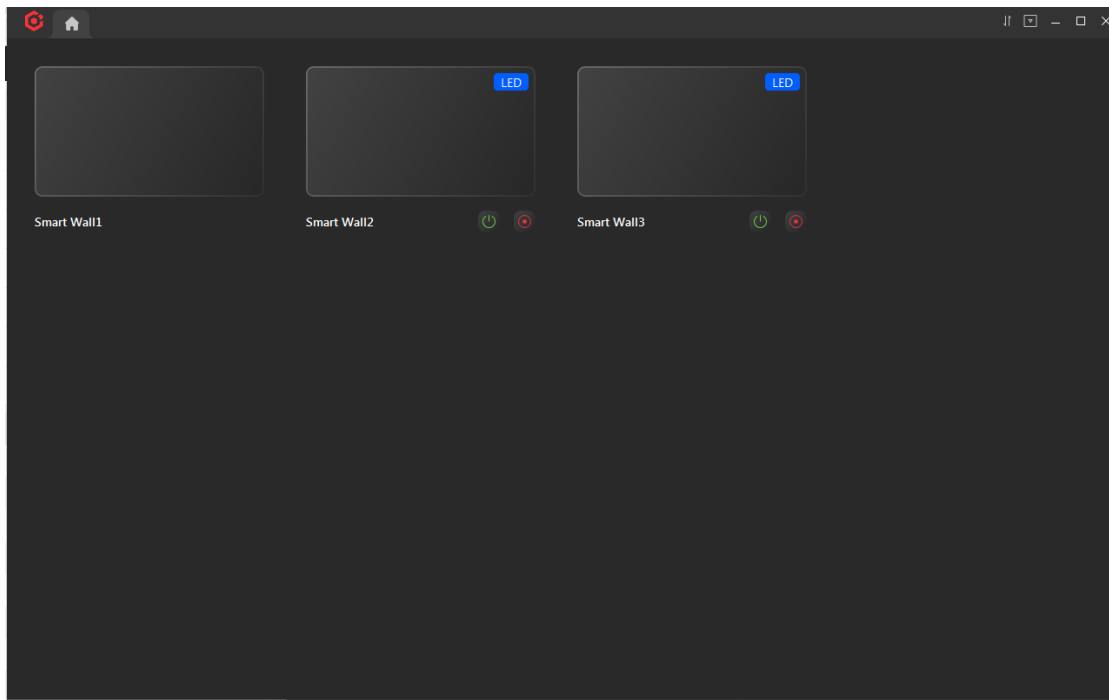
11. The Control Client supports setting a layout template for the smart wall.



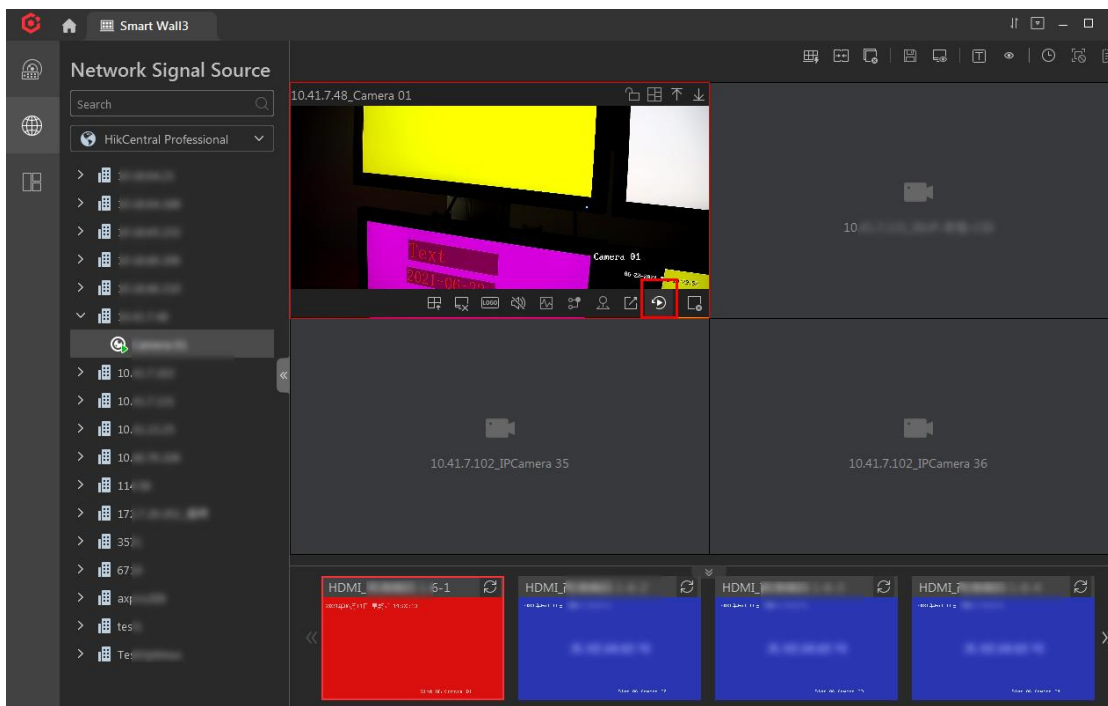
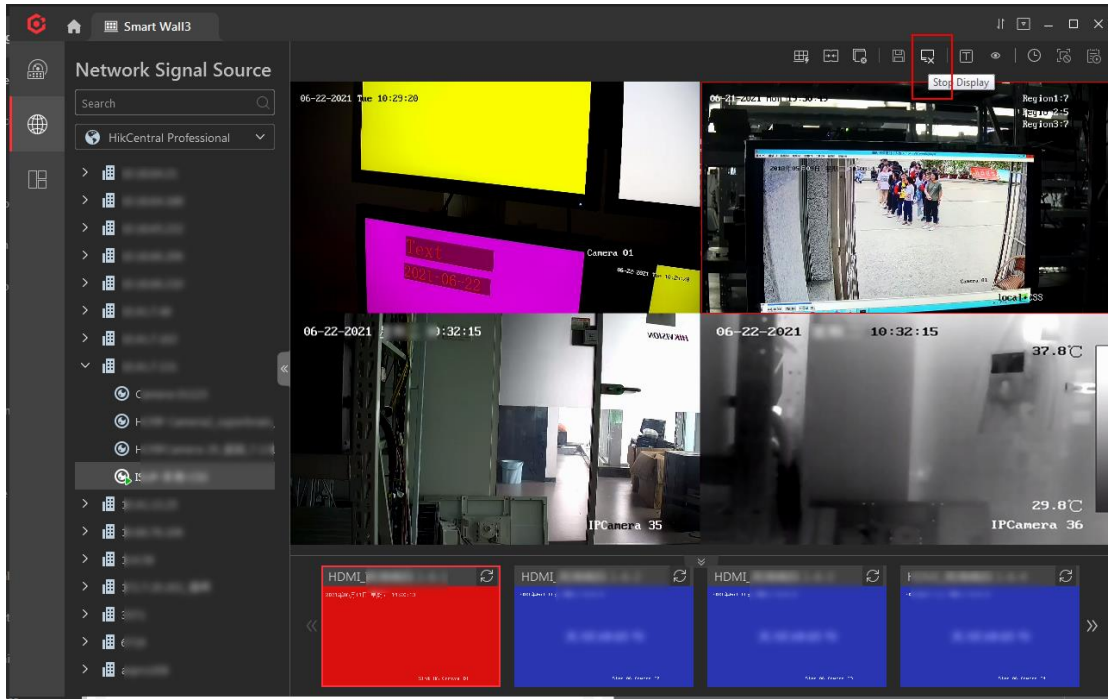
12. The Control Client supports opening window on the smart wall via entering coordinates.



13. The Control Client supports viewing smart walls.

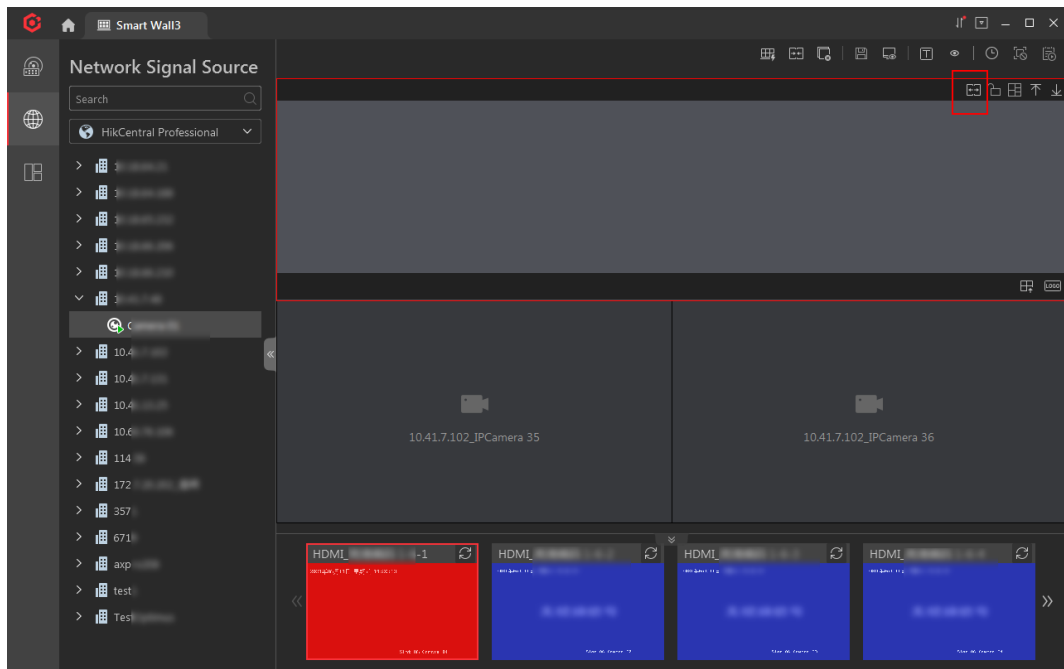


14. The Control Client supports displaying the windows that are displayed on the smart wall simultaneously.

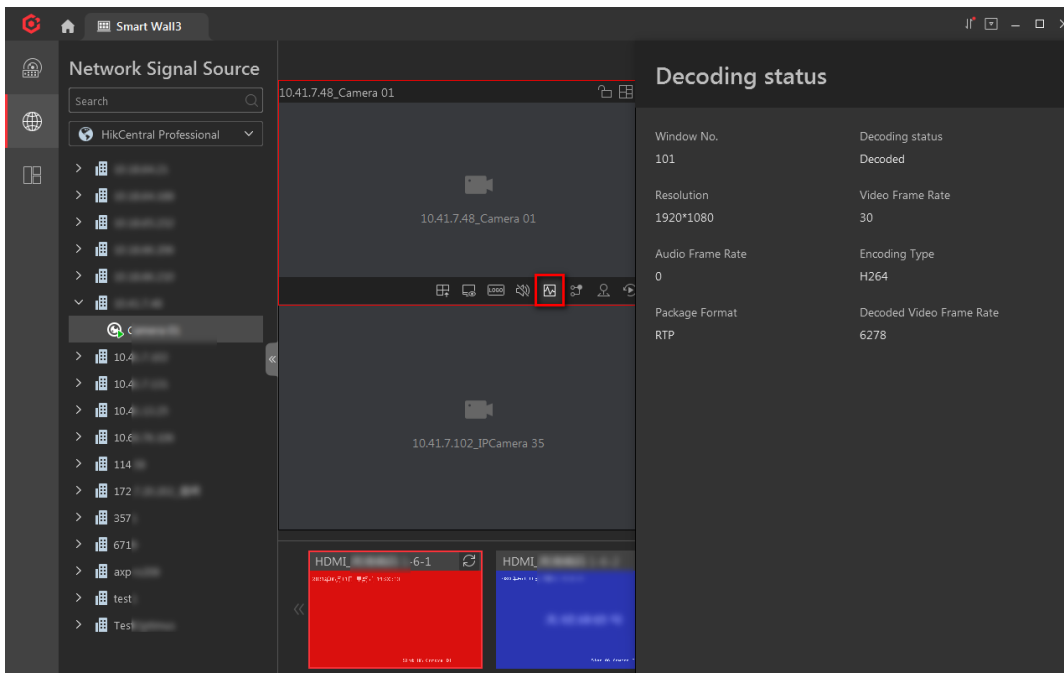


15. The Control Client supports joining multiple windows on the smart wall into one window.

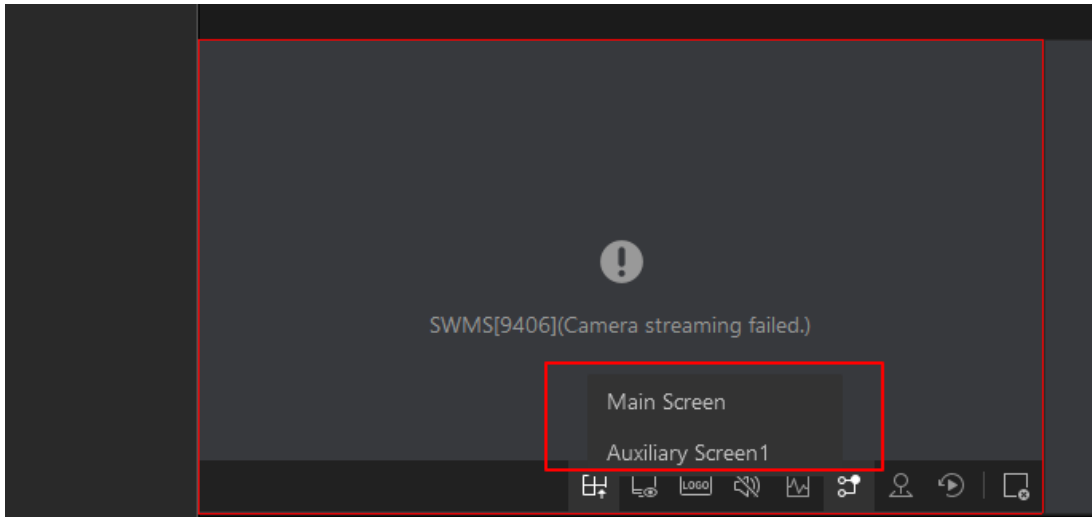




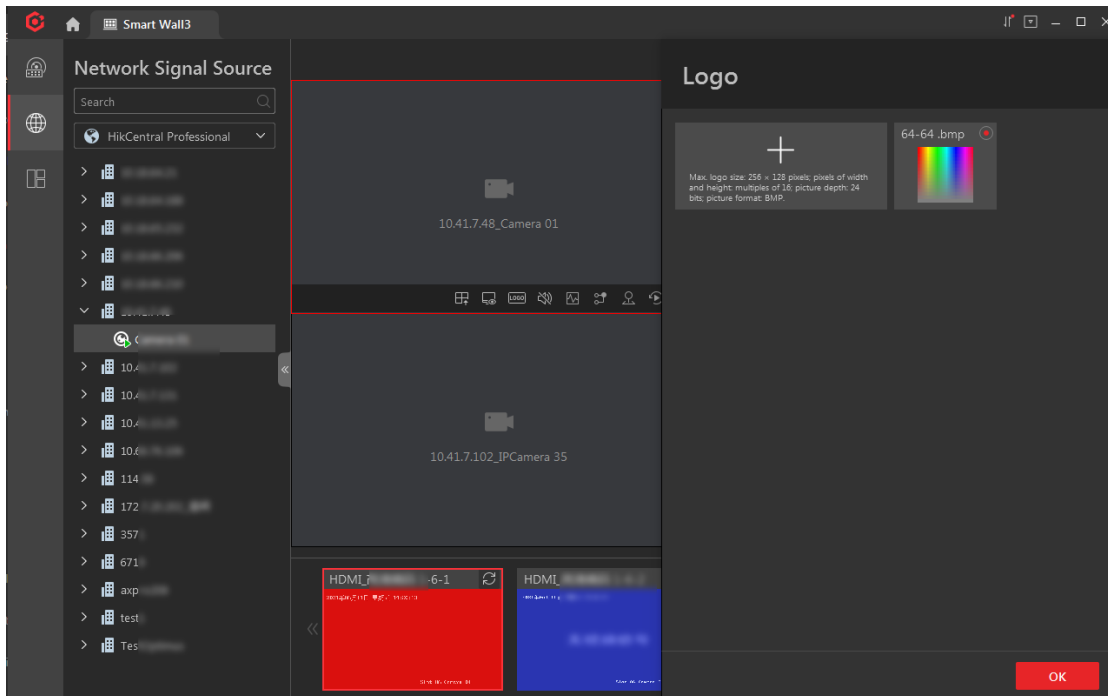
16. The Control Client supports displaying the decoding status of cameras displayed on the wall.

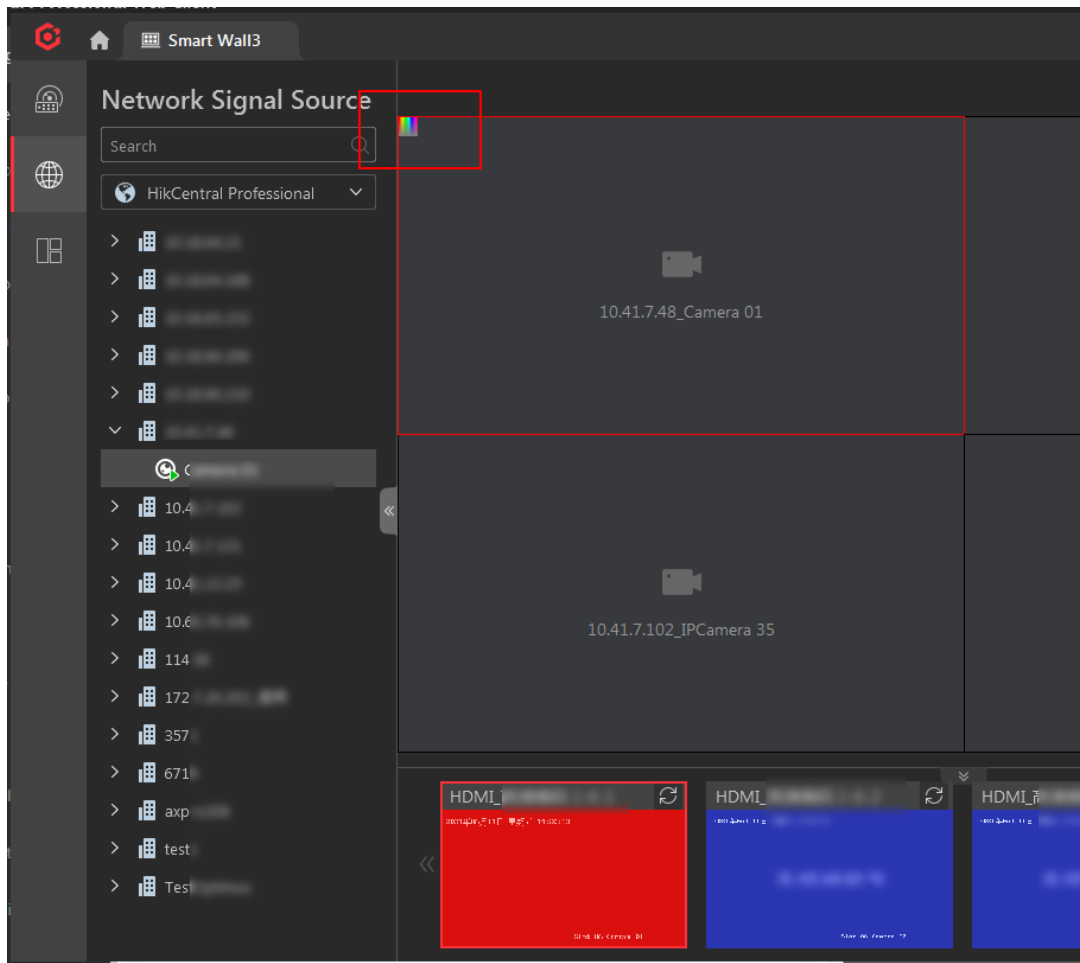


17. The Control Client supports displaying desktop on the wall without installing the RSC server on the local PC.

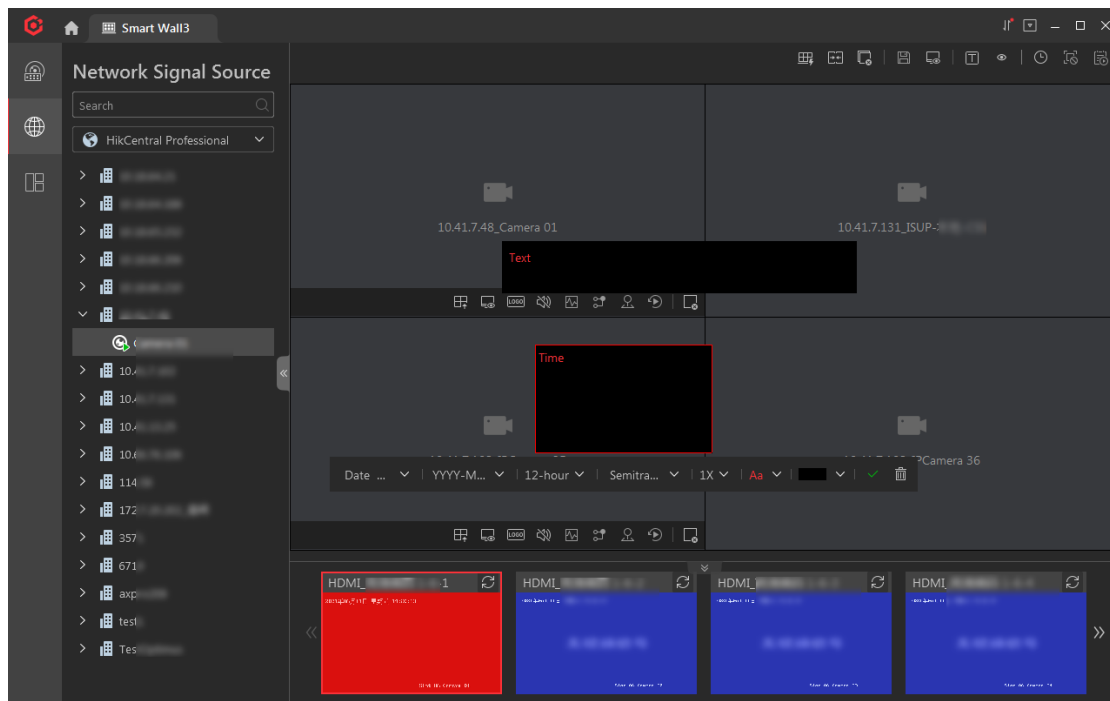


18. The Control Client supports displaying logos on the wall.



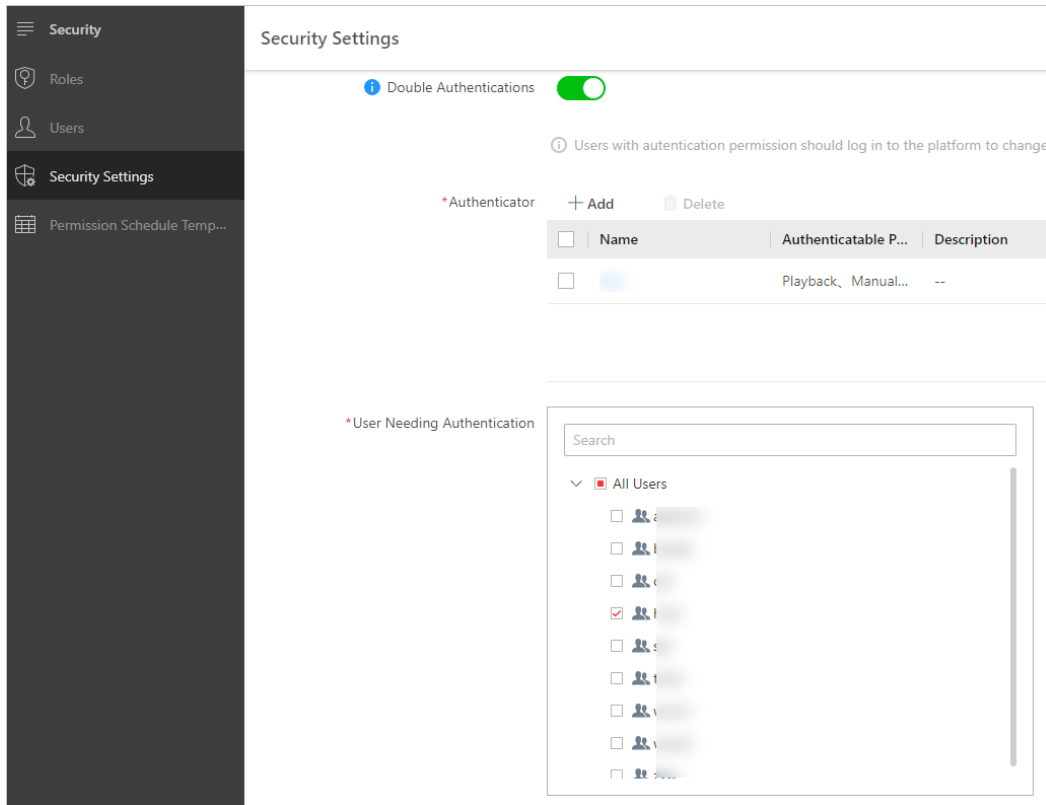


19. The Control Client supports displaying text and time on the wall.

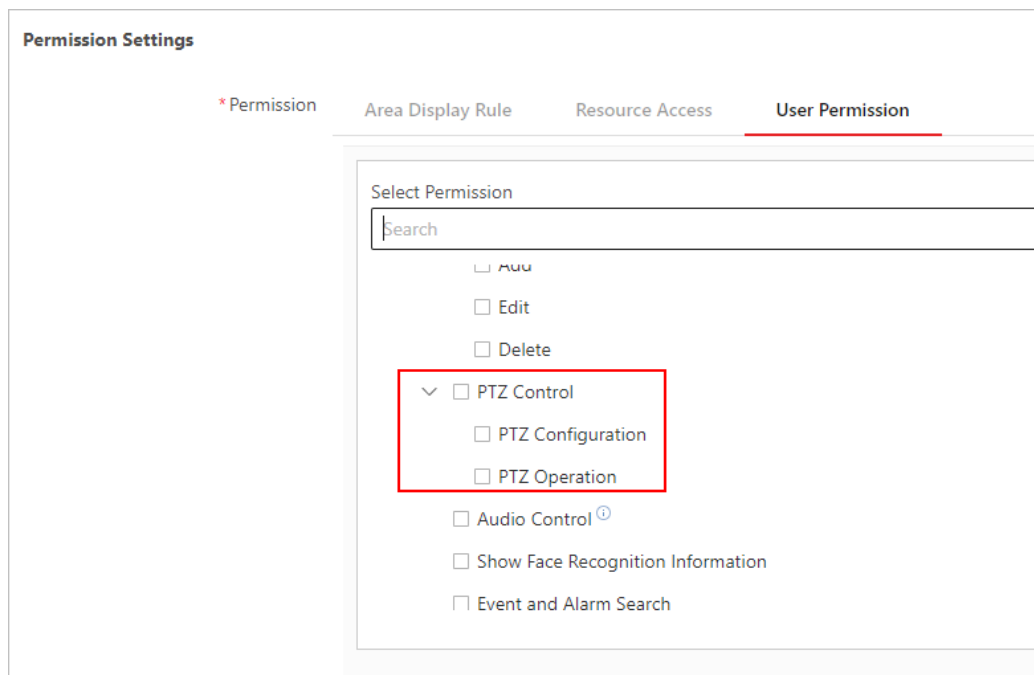


# Chapter 13 Security

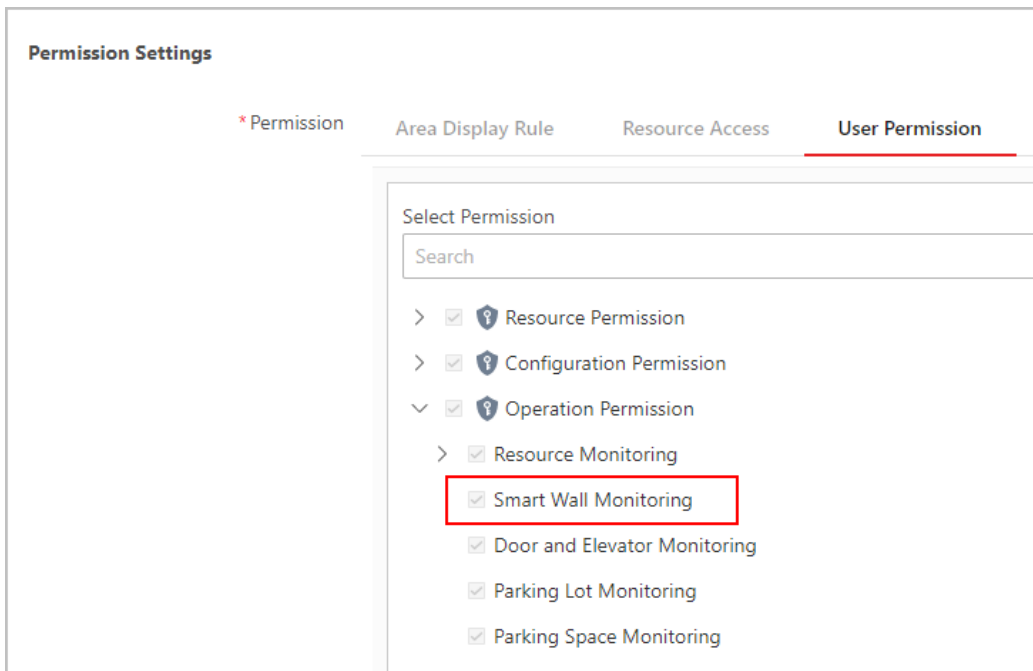
1. The Web Client supports enabling and setting double authentications.



2. Optimized the PTZ Control permission.

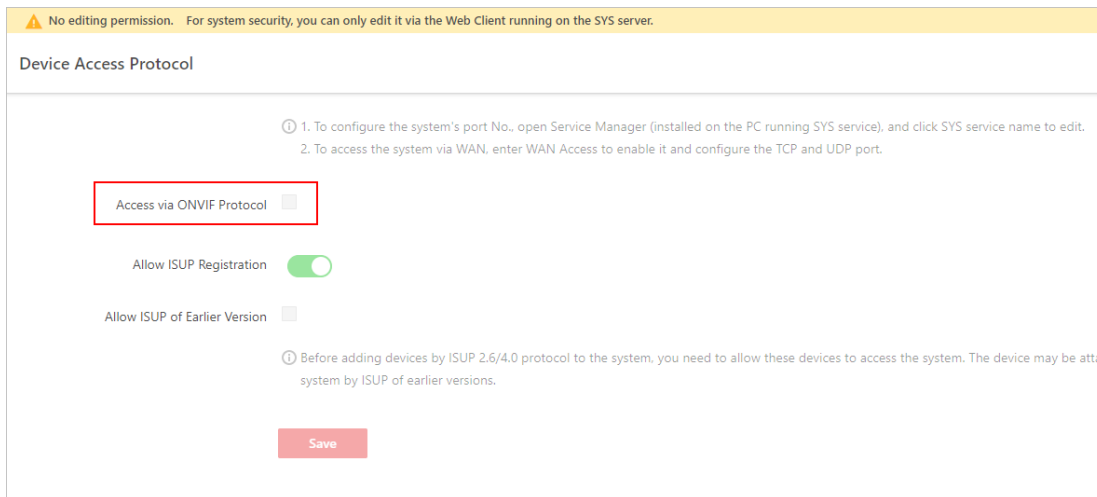


3. Added Smart Wall Monitoring as a new user permission.



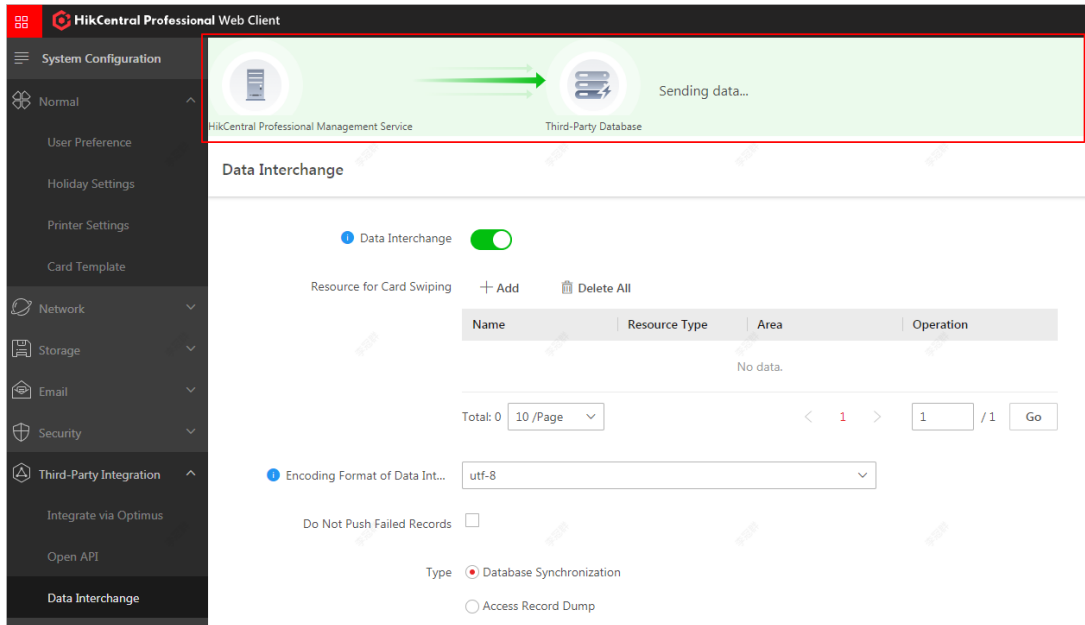
## Chapter 14 System Configuration

Added the switch of Access via ONVIF Protocol. After enabled, you can add devices to the platform via ONVIF Protocol.

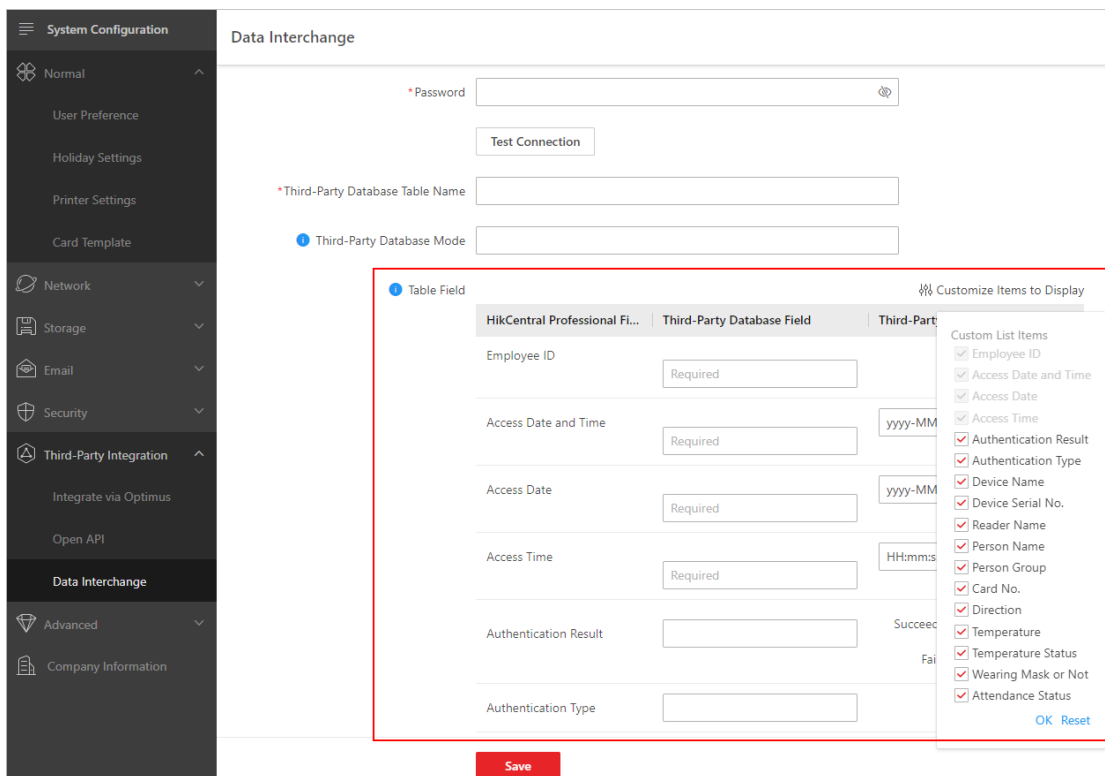


## Chapter 15 Third-Party Integration

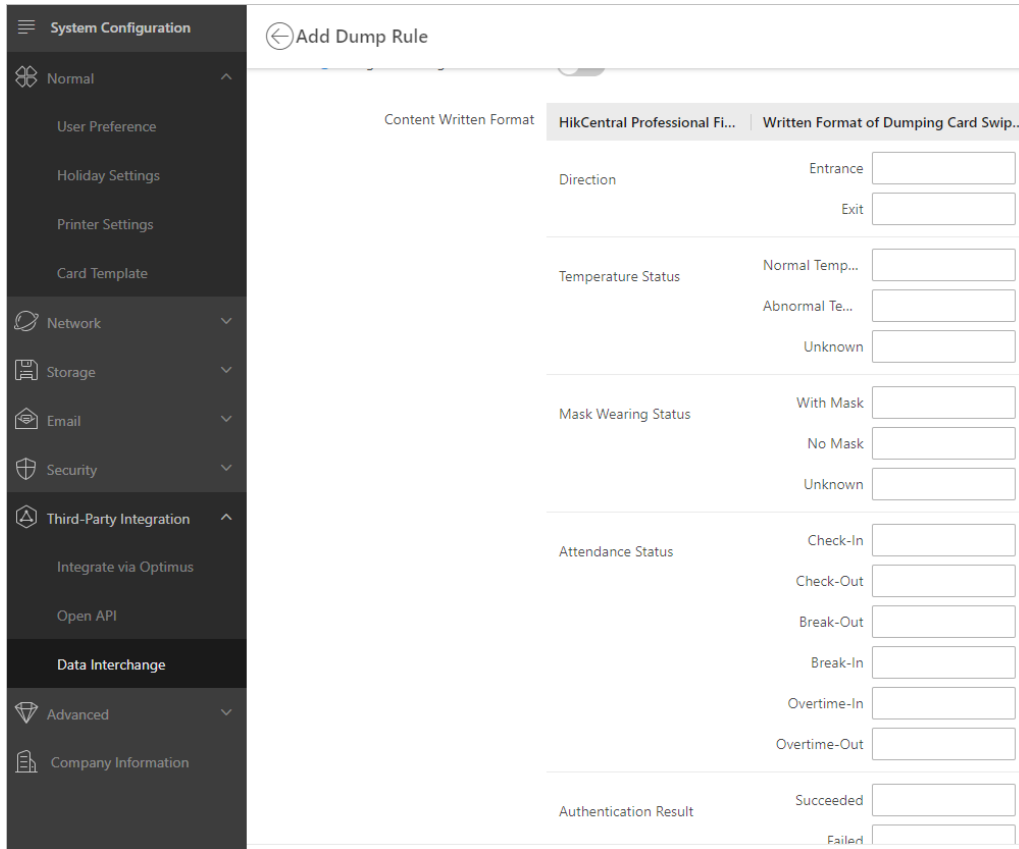
1. The Web Client supports displaying the data transmitting status between the third-party database and the platform.



2. The Web Client supports customizing the types and formats of the data transmitted between the platform and the third-party database.




3. The Add Dump Rule page supports customizing the dumped data types.



- The Web Client supports adding multiple dump rules. So that you can apply different dump rules to different person groups.

Rule Name	Storage Location	Overwrite File	Description	Operation
<a href="#">Rule</a>	Local Storage	Overwrite	--	✕
<a href="#">All Persons</a>	Local Storage	Not Overwrite	--	✕
<a href="#">Technical Support</a>	Local Storage	Not Overwrite	--	✕

- Optimized the configuration operation of third-party databases.

Database Type	PostgreSQL
* Server IP Address	10.18.65.35
* Server Port	5432
* Database Name	cms
* User Name	postgres
* Password	.....
<input type="button" value="Test Connection"/>	
* Third-Party Database Table Name	third_db
 Third-Party Database Mode	public

6. Supports running the HikCentral Professional Service AWS and Azure.

## Chapter 16 Maintenance

### 16.1 Added Features

Added Health Monitoring on the Mobile Client.

### 16.2 Updated Features

The Health Monitoring module supports displaying the status of encoding devices and decoding devices managed in a remote site.

## Chapter 17 Globalization

1. Supports exporting operation logs in multiple languages.
2. Supports working in Slovenčina.



## Chapter 18 OpenAPI

1. Added 12 alarm types, including two camera alarm types, i.e., 385052 (Camera Recording Exception Alarm) and (Camera Recording Recovered Alarm); 7 encoding device alarm types, i.e., 385050 (Encoding Device Recording Exception Alarm), 385051 (Encoding Device Recording Recovered Alarm), 225404 (HDD Bad Sector Alarm), 225405 (HDD High Temperature Alarm), 225406 (HDD Impact Detection Alarm), 225407 (HDD Severe Failure Alarm), and 66065 (Video Standard Mismatches Alarm); three door alarm types, i.e., 198658 (Abnormally Open Door Alarm), 198400 (Open Door Timeout Alarm), and 198657(Door Open by Force Alarm).
2. Supports configuring the parameter **eventLvl** (event level) in event message.
3. Added a websocket streaming type “WSS” to the parameter **requestWebsocketProtocol** for getting the streaming URL for live view or playback (related APIs: POST `/artemis/api/video/v1/cameras/previewURLs` and POST `/artemis/api/video/v1/cameras/playbackURLs`).
4. Supports streaming via RTSP for devices added via ISUP.
5. Added an API for adding a visitor's information for checking in (related API: POST `/artemis/api/visitor/v1/registerment`).
6. Added an API for editing a visitor's information for checking in (related API: POST `/artemis/api/visitor/v1/registerment/update`).
7. Added an API for adding a visitor's reservation record (related API: POST `/artemis/api/visitor/v2/appointment`).
8. Added an API for editing a visitor's reservation record (related API: POST `/artemis/api/visitor/v2/appointment/update`).
9. Added an API for deleting a visitor's reservation record (related API: POST `/artemis/api/visitor/v1/appointment/single/delete`).
10. Added an API for getting the list of the reservation records (related API: POST `/artemis/api/visitor/v1/appointment/appointmentlist`).
11. Added an API for downloading the picture of a visitor (related API: POST `/artemis/api/visitor/v1/appointment/downloadpicture`).



See Far, Go Further