



Quick Start Guide (QSG)

T710xQxTx

TurboHD DVR/Camera Kit



This user manual (hereinafter referred to as "the Manual") cannot be reproduced, changed, translated, or distributed, partially or wholly, by any means, without the prior written permission of Hikvision. Unless otherwise stipulated, Hikvision does not make any warranties, guarantees, or representations, express or implied, regarding the Manual.

About this Manual: The Manual includes instructions for using and managing the product. Pictures, charts, images, and all other information hereinafter are for description and explanation only. The information contained in the Manual is subject to change, without notice, due to firmware updates or other reasons. Please find the latest version on the company Website (<http://overseas.hikvision.com/en/>). Please use this user manual under the guidance of professionals.

Trademarks Acknowledgement: **HIKVISION** and other Hikvision trademarks and logos are the properties of Hikvision in various jurisdictions. Other trademarks and logos mentioned below are the properties of their respective owners.

Legal Disclaimer: TO THE MAXIMUM EXTENT PERMITTED BY APPLICABLE LAW, THE PRODUCT DESCRIBED, WITH ITS HARDWARE, SOFTWARE, AND FIRMWARE, IS PROVIDED "AS IS," WITH ALL FAULTS AND ERRORS, AND HIKVISION MAKES NO WARRANTIES, EXPRESS OR IMPLIED, INCLUDING WITHOUT LIMITATION, MERCHANTABILITY, SATISFACTORY QUALITY, FITNESS FOR A PARTICULAR PURPOSE, AND NON-INFRINGEMENT OF THIRD PARTY. IN NO EVENT WILL HIKVISION, ITS DIRECTORS, OFFICERS, EMPLOYEES, OR AGENTS BE LIABLE TO YOU FOR ANY SPECIAL, CONSEQUENTIAL, INCIDENTAL, OR INDIRECT DAMAGES, INCLUDING, AMONG OTHERS, DAMAGES FOR LOSS OF BUSINESS PROFITS, BUSINESS INTERRUPTION, OR LOSS OF DATA OR DOCUMENTATION, IN CONNECTION WITH THE USE OF THIS PRODUCT, EVEN IF HIKVISION HAS BEEN ADVISED OF THE POSSIBILITY OF SUCH DAMAGES.

REGARDING TO THE PRODUCT WITH INTERNET ACCESS, THE USE OF PRODUCT SHALL BE WHOLLY AT YOUR OWN RISKS. HIKVISION SHALL NOT TAKE ANY RESPONSIBILITIES FOR ABNORMAL OPERATION, PRIVACY LEAKAGE, OR OTHER DAMAGES RESULTING FROM CYBER ATTACK, HACKER ATTACK, VIRUS INSPECTION, OR OTHER INTERNET SECURITY RISKS; HOWEVER, HIKVISION WILL PROVIDE TIMELY TECHNICAL SUPPORT IF REQUIRED.

SURVEILLANCE LAWS VARY BY JURISDICTION. PLEASE CHECK ALL RELEVANT LAWS IN YOUR JURISDICTION BEFORE USING THIS PRODUCT IN ORDER TO ENSURE THAT YOUR USE CONFORMS TO THE APPLICABLE LAW. HIKVISION SHALL NOT BE LIABLE IN THE EVENT THAT THIS PRODUCT IS USED FOR ILLEGITIMATE PURPOSES.

IN THE EVENT OF ANY CONFLICTS BETWEEN THIS MANUAL AND THE APPLICABLE LAW, THE LATER PREVAILS.

Regulatory Information


FCC Information


FCC Compliance: This equipment has been tested and found to comply with the limits for a digital device, pursuant to part 15 of the FCC Rules. These limits are designed to provide reasonable protection against harmful interference when the equipment is operated in a commercial environment. This equipment generates, uses, and can radiate radio frequency energy and, if not installed and used in accordance with the instruction manual, may cause harmful interference to radio communications. Operation of this equipment in a residential area is likely to cause harmful interference in which case the user will be required to correct the interference at his own expense.


FCC Conditions: This device complies with part 15 of the FCC Rules. Operation is subject to the following two conditions:

1. This device may not cause harmful interference.
2. This device must accept any interference received, including interference that may cause undesired operation.

EU Conformity Statement

 This product and, if applicable, the supplied accessories too are marked with "CE" and comply therefore with the applicable harmonized European standards listed under the EMC Directive 2004/108/EC, the RoHS Directive 2011/65/EU.

 2012/19/EU (WEEE Directive): Products marked with this symbol cannot be disposed of as unsorted municipal waste in the European Union. For proper recycling, return this product to your local supplier upon the purchase of equivalent new equipment, or dispose of it at designated collection points. For more information see: www.recyclethis.info

 2006/66/EC (battery directive): This product contains a battery that cannot be disposed of as unsorted municipal waste in the European Union. See the product documentation for specific battery information. The battery is marked with this symbol, which may include lettering to indicate cadmium (Cd), lead (Pb), or mercury (Hg). For proper recycling, return the battery to your supplier or to a designated collection point. For more information see: www.recyclethis.info

Industry Canada ICES-003 Compliance: This device meets the CAN ICES-3 (A)/NMB-3(A) standards requirements.

Safety Instruction: These instructions are intended to ensure that the user can use the product correctly to avoid danger or property loss. The precaution measure is divided into "Warnings" and "Cautions."

- **Warnings:** Serious injury or death may occur if any of the warnings are neglected.
- **Cautions:** Injury or equipment damage may occur if any of the cautions are neglected.

 Warnings Follow these safeguards to prevent serious injury or death.	 Cautions Follow these precautions to prevent potential injury or material damage.
--	---

Warnings

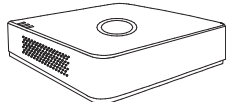
- Proper configuration of all passwords and other security settings is the responsibility of the installer and/or end-user.
- In the use of the product, you must be in strict compliance with the electrical safety regulations of the nation and region. Refer to technical specifications for detailed information.
- Input voltage should meet both the SELV (Safety Extra Low Voltage) and the Limited Power Source with 24 VAC or 12 VDC according to the IEC60950-1 standard. Please refer to technical specifications for detailed information.
- Do not connect several devices to one power adapter as adapter overload may cause over-heating or a fire hazard.
- Please make sure that the plug is firmly connected to the power socket. When the product is mounted on wall or ceiling, the device shall be firmly fixed.
- If smoke, odor or noise rise from the device, turn off the power at once and unplug the power cable, and then please contact the service center.

Cautions

- Make sure the power supply voltage is correct before using the camera.
- Do not drop the camera or subject it to physical shock.
- Do not touch sensor modules with fingers. If cleaning is necessary, use clean cloth with a bit of ethanol and wipe it gently. If the camera will not be used for an extended period, please replace the lens cap to protect the sensor from dirt.
- Do not aim the camera at the sun or extra bright locations. Blooming or smearing may occur (which is not a malfunction) and affect the endurance of the sensor.
- The sensor may be burned out by a laser beam, so when any laser equipment is in use, make sure that the surface of the sensor will not be exposed to the laser beam.
- Do not place the camera in extremely hot, cold (the operating temperature shall be -30° C to +60° C, or -40° C to +60° C if the camera model has an "H" in its suffix), dusty, or damp locations, and do not expose it to high electromagnetic radiation.
- To avoid heat accumulation, good ventilation is required for the operating environment.
- Keep the camera away from liquid while in use.
- While in delivery, the camera shall be packed in its original packing, or packing of the same durability.
- Regular part replacement: some equipment parts (e.g., electrolytic capacitor) shall be replaced regularly according to their average endurance time. The average time varies because of differences between operating environments and usage history, so regular checking is recommended for all users. Contact your dealer for more details.
- Improper use or replacement of the battery may result in hazard of explosion. Replace with the same or equivalent type only. Dispose of used batteries according to the instructions provided by the battery manufacturer.
- If the product does not work properly, contact your dealer or the nearest service center. Never attempt to disassemble the camera yourself. (We shall not assume any responsibility for problems caused by unauthorized repair or maintenance.)

WHAT'S IN THE BOX

Make sure the following items are in your box:



DVR



Mouse



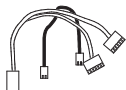
Power Supply
(Qty varies by kit)



HDD Screws
(installed)



HDD
(installed)



HDD Cables
(installed)



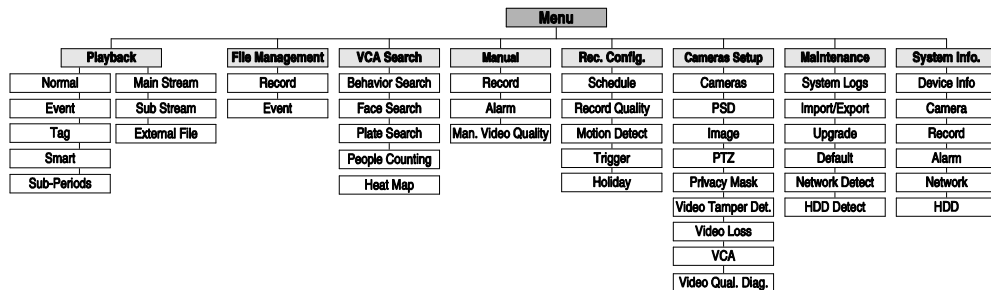
QSG



DVD-ROM

MENU TREE

Use this menu tree to navigate the embedded menus.



TOP PANEL



Top Panel LEDs	
	Red when DVR is powered up
	Red when data is being written to or read from the HDD
	Flickers blue when network connection is functioning properly

Figure 1, DS-710xHQHI-F1/N Top Panel

REAR PANEL

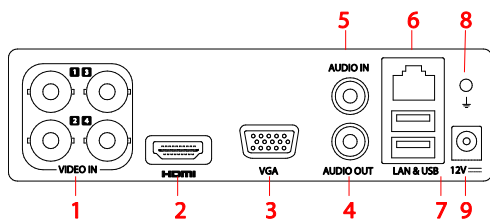


Figure 2, DS-7104HQHI-F1/N Rear Panel

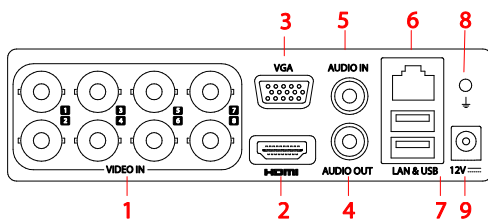


Figure 3, DS-7108HQHI-F1/N Rear Panel

DS-710xHQHI-F1/N					
Description		Description			
1	VIDEO IN	4	AUDIO OUT, RCA Connector	7	USB Ports
2	HDMI Interface	5	AUDIO IN, RCA Connector	8	GND
3	VGA Interface	6	LAN Network Interface	9	12 VDC Power Input

1 CONNECT DEVICES

1. Connect power supply to the DVR.
2. Connect DVR to LAN using Cat 5e cable.
3. Connect video monitor(s) to DVR using HDMI and/or VGA cables, as appropriate.
4. Connect mouse to USB port (wireless mouse can be used in lieu of included mouse).
5. Connect to audio I/O using RCA connectors.

2 START THE DVR

1. Plug power supply plug into 110 to 240 VAC outlet (surge suppressor is recommended).
2. Turn power switch on. Power indicator LED will turn red to indicate unit is starting.
3. After startup, power indicator LED will remain red.

3

LOCAL ACTIVATION

System access requires a secure, user-assigned password.



▼ Set Admin Password

First-time access requires user to create an admin password.

1. Input same password in **Create New Password** and **Confirm New Password** text fields.



Strong Password REQUIRED

Password must contain 8 to 16 characters, combining numbers, lower and upper case letters, and special characters. At least two types of the above-mentioned characters are required. Also, reset password regularly.

2. Click **OK** to save password and activate device.

Password Strength Levels

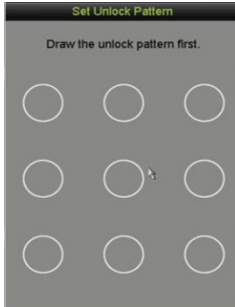
STRENGTH LEVEL	DESCRIPTION
Level 0 (Risky) DVRs <i>will not</i> accept password	Password is fewer than 8 characters, contains only 1 type of character, is same as the user name, or is mirror writing of user name
Level 1 (Weak) DVRs <i>will</i> accept password	Password contains number + lowercase letter or number + uppercase letter and is at least 8 characters.
Level 2 (Medium/Fair) DVRs <i>will</i> accept password	Password contains 2 types of characters (<i>neither</i> number + lowercase letter <i>nor</i> number + uppercase letter) and is at least 8 characters.
Level 3 (Strong) DVRs <i>will</i> accept password	Password contains more than three types of characters and is at least 8 characters.

NOTE 1: The strength level indicator colors can vary by activation process, model number, and device type. Typical: Risky (no color), Weak (pink), Fair (yellow), Strong (green).

NOTE 2: PASSWORD CHARACTERS ALLOWED (ASCII Only):

- Lowercase ASCII Letters
a b c d e f g h i j k l m n o p q r s t u v w x y z
- Uppercase ASCII Letters
A B C D E F G H I J K L M N O P Q R S T U V W X Y Z
- Numerals
0 1 2 3 4 5 6 7 8 9
- Special Characters
. - _ : / @ , ? ! ' () \$ & " [] { } # % ^ * + = \ | < >

3 LOCAL ACTIVATION (continued)



▼ Export Password Reset (GUID) Key

Insert a USB device to export the GUID key. This file can be imported to allow a new password to be created should the original password be lost or maliciously changed.

▼ Set Unlock Pattern

Admin user will be prompted to configure an unlock pattern for login in place of a password.

1. Hold down left mouse button and draw a pattern connecting at least four dots on the screen, each dot connected only once.
2. Release mouse button when done.
3. Draw the same pattern again to confirm it.

NOTE: If you forget your pattern, click on "Forgot Password" to display the normal admin login dialog box.

▼ Log In Using the Unlock Pattern

1. Draw the unlock pattern to unlock system.

4 INITIALIZE THE HARD DRIVE (IF NEEDED)

The system is set up to record upon power up and will beep and display "Do you want to initialize drive" prompt if the hard drive(s) are not initialized.

1. Go to MENU > SYSTEM CONFIGURATION > HDD.
2. Use the checkboxes to select the HDDs that need to be initialized.
3. Press **INIT.** (Factory installed HDDs come initialized. Initializing again will erase any record video. This does not affect settings).

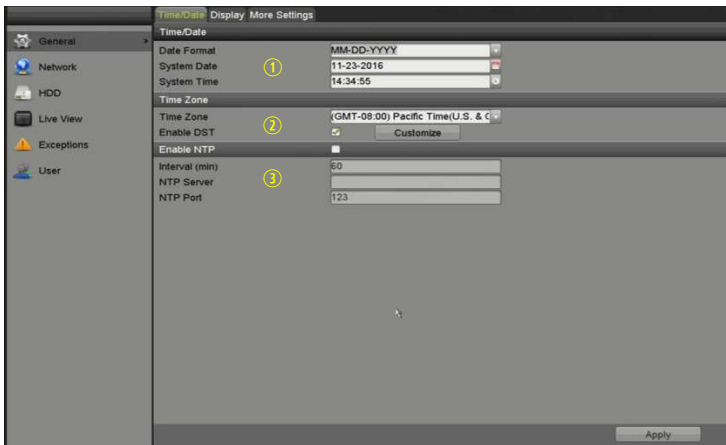
4 INITIALIZE THE HARD DRIVE (IF NEEDED) (continued)



- ① HDD LIST
- ② TOTAL HDD SPACE
- ③ FREE SPACE

5 SET DATE AND TIME

1. Go to MENU > SYSTEM CONFIGURATION > GENERAL.



- ① DATE/TIME
Date and time settings
- ② TIME ZONE
Time zone and daylight savings time settings
- ③ ENABLE NTP
Network Time Protocol settings

6 SET UP NETWORK ACCESS

A network connection is required to access the cameras remotely.

1. Go to MENU > SYSTEM CONFIGURATION > NETWORK.
2. Enable DHCP (check the checkbox).
3. Press **Refresh** button to update the IPv4 address, subnet mask, and IPv4 default gateway.
4. Disable DHCP (uncheck the checkbox).
5. Change “Preferred DNS Server” value to 8.8.8.8 (leave Alternate DNS Server blank).

6 SET UP NETWORK ACCESS (continued)

System Configuration

① General Platform Access DDNS Email NAT More Settings

General

Network

HDD

Live View

Exceptions

User

NIC Type ② 10M/100M/1000M Self-ada

Enable DHCP ③

IPv4 Address ④ 192.0.0.64 IPv6 Address 1 fe90::bead:28ff:feab:3386/64

IPv4 Subnet Mask IPv6 Address 2

IPv4 Default Gateway IPv6 Default Gateway

MTU(Bytes) 1500 MAC Address bc:ad:28:ab:33:86

DNS Server

Enable DNS DHCP

Preferred DNS Server ⑤ 8.8.8.8

Alternate DNS Server ⑥

Apply

- ① **GENERAL TAB**
Select this tab
- ② **NIC TYPE**
Set LAN type
- ③ **ENABLE DHCP**
Check box so that router will assign IP address
- ④ **IP V4 ADDRESS**
Default 192.0.0.64
- ⑤ **PREFERRED DNS SERVER**
Default is 8.8.8.8
- ⑥ **ALTERNATE DNS SERVER**
Leave blank

7 SET REMOTE VIEWING PORTS

After assigning the IP information, click the **More Settings** tab.



The **More Settings** tab contains the ports that need to be forwarded for remote access.

General Platform Access DDNS Email NAT More Settings

Alarm Host

Alarm Host IP

Alarm Host Port 0

Port

Server Port 9000

HTTP Port 80

RTSP Port 10564

More

Multicast IP

Output Bandwidth Limit

Output Bandwidth (Mbps) 2

- **SERVER PORT** is responsible for the mobile app and client software log-in
- **HTTP PORT** is responsible for Web browser log-in
- **RTSP PORT** is responsible for video/audio streaming

NOTE: The **HTTP port**, **server port**, and **RTSP port** can be changed to avoid conflicts with the ISP or if multiple devices are installed at a single location.

8

SET UP PORT FORWARDING

Port forwarding redirects communication from one address/port number to another to make services on a protected network available to hosts on an external network.

1. Log into the router, and proceed with **port forwarding**. **Port forwarding** steps differ by router. For **port forwarding** assistance, contact your Internet Service Provider (ISP) or router manufacturer. Also refer to www.portforward.com for step-by-step instructions.

NOTE: Hikvision USA is not associated with www.portforward.com and is not responsible for any activity between the user and www.portforward.com. Avoid accidentally downloading any software from www.portforward.com.

2. Proceed to the **Routers** section on the website for step-by-step instructions.

9

SET UP DDNS (Dynamic Domain Name System)

DDNS allows users with dynamic (changing) IP address to access their unit remotely.

1. Click on the **DDNS** tab.
2. Check the **DDNS** checkbox.
3. **DDNS Type:** HiDDNS (default)
4. **Continent/Country:** Auto Detection (default)
5. **Server Address:** www.hik-online.com (U.S. default)
6. Create a **Device Domain Name** (cannot begin with a number, contain spaces, special characters, or upper case letters).
7. Create a **User Name**.
8. **Password:** System uses device serial number; cannot be changed.

General	Platform Access	DDNS	Email	NAT	More Settings
Enable DDNS <input checked="" type="checkbox"/>					
DDNS Type	HiDDNS				
Area/Country	Custom				
Server Address	www.hik-online.com				
Device Domain Name	q332211rmt				
Status	DDNS is connecting...				
User Name					
Password					
No available URL to visit!					
Apply					

9. Once the changes have been made, press **Apply** to display the **Succeeded** message. (If the Domain Name does not meet acceptable criteria, or is already registered, an error message will appear.)

10

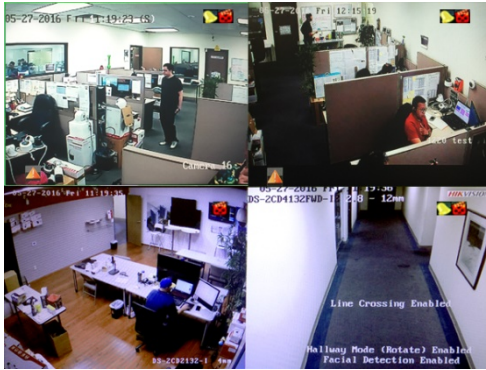
ADD ANALOG CAMERAS

1. Plug cameras into the Video In BNC ports.
2. Apply power to the cameras.

11

VIEW LIVE VIDEO

Live View displays real-time video.



Icons in the upper right of screen show each camera's record and alarm status.

- **Alarm** (video loss, tampering, motion detection, sensor alarm, or VCA alarm)
- **Record** (manual record, continuous record, motion detection, alarm, or VCA triggered record)
- **Event/Exception** (event and exception information appears at lower-left corner of screen)

12

SET UP RECORDING

The system defaults to record video continuously at at maximum frame rate. Consider adjusting to 8 fps for continuous and 15 fps for event recording for optimum recording.

▼ Recording Schedule

Default is to record continuously every day. Do the following to change the recording schedule:

1. Go to MENU > RECORDING CONFIGURATION > SCHEDULE.
2. Choose **CONTINUOUS** or **EVENT/(MOTION DETECTION)** under the **Type** pull-down menu.
3. Use cursor to select (days will turn blue [continuous] or yellow [event/motion detect]) or deselect (days will turn gray [off]) the calendar days you wish to record.
4. Apply time settings as desired.
5. Press **APPLY**.



① TYPE

Motion or Continuous (default)

② COLOR

Shows Recording Schedule days:

- Blue=Continuous
- Yellow=Event (motion/alarm)
- Grey=None

③ TIMES

Customize schedule times (ignore for "motion only" recording)

④ ADD

Press to add time settings to schedule

⑤ ENABLE SCHEDULE

If not checked, camera will not record

▼ Motion Detection Areas

To define the image areas that Motion Detection will monitor for each camera, do the following:

1. Go to MENU > RECORDING CONFIGURATION > MOTION DETECT.
2. Use **Camera** pull-down menu to select camera to configure.
3. Check the **Enable Motion Detection** checkbox to enable motion detection.
4. Use the **Sensitivity** boxes to select how responsive the detection should be (the more green boxes lit, the greater the sensitivity).
5. Drag a grid(s) over the area(s) on the image that will be sensitive to motion.
6. Click the **Settings Set** button to configure **Arming Schedule** (when detection is enabled) and **Linkage Actions** (what action(s) to take when motion is detected).

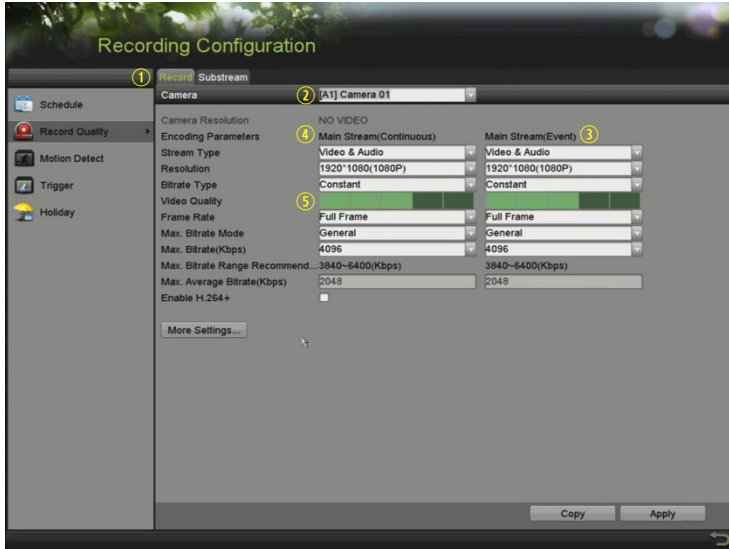


- ① **CAMERA**
Select camera
- ② **ENABLE MOTION DETECTION**
Click to enable/disable
- ③ **MOTION GRID**
Draw grid area that will detect motion
- ④ **SENSITIVITY**
Select number of green squares to set sensitivity (in example, sensitivity is set to 3)
- ⑤ **SETTINGS/SET**
Configure arming schedule and linkage actions
- ⑥ **APPLY**
Click to apply settings

▼ Record Quality

• Main Stream

1. Go to RECORDING CONFIGURATION > RECORD QUALITY > MAIN STREAM and set the following items:
 - **Stream Type** enables/disables audio streaming from the cameras (if the camera does not have audio capabilities, **Stream Type** will have only **Video** option).
 - **Resolution** sets recording resolution.
 - **Bitrate Type:**
 - > **Variable** saves HDD space
 - > **Constant** provides more stable stream



- ① **RECORD (MAIN STREAM)**
Select tab
- ② **CAMERA**
Select IP camera
- ③ **EVENT**
For event recording only (motion or alarm)
- ④ **CONTINUOUS**
For live view image and continuous recording
- ⑤ **VIDEO QUALITY**
Select number of green squares to set quality (in example, sensitivity is set to 3)

- **Video Quality** adjusts picture clarity (high setting = four green squares is default). Consider highest if hard drive space allows. Medium setting is a balance between good picture and saving HDD space.
 - **Frame Rate** sets recording frame rate. The system defaults to record video continuously at maximum frame rate. Consider adjusting to 8 fps for continuous and 15 fps for event recording for optimum recording. Higher frame rates require more storage, but allow better slow motion playback.
 - **Max Bitrate Mode** chooses between pre-set bitrate values and customized values (**General** setting is default).
 - **Max Bitrate (kbps)** is the chosen bitrate for streaming the video. Max Bitrate should be adjusted to meet or exceed the rate recommended by the system for the chosen parameters.
 - **Max Bitrate Recommended** is impacted by resolution, quality, and frame rate.
 - **Record Audio** turns on audio recording. Requires connection of external microphone or camera with built-in mic.
 - **Video Stream** determines which stream is recorded. Leave at default (Main Stream).
- **Substream**
 1. Go to RECORDING CONFIGURATION > RECORD QUALITY > SUBSTREAM to set up the **Sub Stream** to stream to mobile devices and display multiple cameras locally.

NOTE: If the upload speed is not sufficient, lower the frame rate, bitrate, and or resolution for more fluent mobile viewing.

12 SET UP RECORDING (continued)



- ① **RECORD TAB**
Select
- ② **CAMERA**
Select camera
- ③ **STREAM TYPE**
Select choice
- ④ **RESOLUTION**
Can go up only to 4CIF
- ⑤ **VIDEO QUALITY**
Select number of green squares to set quality (in example, sensitivity is set to 3)

- **More Settings...**

1. Click the **More Settings...** button to display additional settings.



- ① **PRE-RECORD**
Seconds to record before recording starts
- ② **POST RECORD**
Seconds to record after recording ends
- ③ **EXPIRED TIME (DAY)**
Days to keep the recording
- ④ **RECORD AUDIO**
Check to record audio
- ⑤ **VIDEO STREAM**
Choose which video stream to record

13 PLAY BACK RECORDED VIDEO

1. Go to MENU > PLAYBACK.
2. Select the desired camera(s) from the menu on the right of the screen.
3. Select the desired date (days that contain recordings will be blue if recording was continuous only or yellow if all or part of the day was event recording).
4. Press **PLAY**.
5. Click within the timeline to jump to desired time.

13 PLAY BACK RECORDED VIDEO (continued)




- ① **PLAYBACK TYPE MENU**
Select type of record to play
- ② **FULL SCREEN**
Goes to full screen for multiple channel playback
- ③ **PLAY/STOP**
Begin playback (toggles between Play and Stop)
- ④ **CAMERA LIST**
Select camera(s) to play back
- ⑤ **CALENDAR**
Select date to play back
- ⑥ **TIMELINE**
Click on timeline to jump to desired playback time
- ⑦ **SMART PLAYBACK OPTIONS**
Click to initiate Smart playback


Playback Controls



▼ Play Back Record Files

1. Go to MENU > LIVE VIEW.
2. Left click a Live View window to bring up a shortcut toolbar and click on the  icon for instant playback.


▼ Playback Controls



1. Right click a Live Image to display a Quick menu and click on  icon for instant playback.

14 BACK UP VIDEO RECORDINGS AND CLIPS


Back up recorded video clips to ensure important video is not lost or destroyed.

▼ Choose Recorded Video Clips to Back Up


1. Connect a USB flash drive, HDD, or DVD writer to an available USB port (this step is mandatory).
2. Go to MENU > PLAYBACK.
3. Select cameras for playback.
4. Select the date and beginning time of the incident.
5. Click **START CLIPPING**  button.

6. Select the ending time of the incident.
7. Click **END CLIPPING**  button (same button as **START CLIPPING**). Clip will be marked.
8. Repeat steps 1-6 as many times as required.
9. Click **FILE MANAGEMENT**  button to display a new window containing all marked clips.
10. Select the desired clips.
11. Click **EXPORT** to save files to the inserted USB device.

▼ Lock Video Clips

1. Click on the images of the clips you want to lock.
2. Press the **LOCK**  button to prevent the file from being erased.

▼ Back Up Video Clips

1. Connect a USB flash drive, HDD, or DVD writer to an available USB port.
2. Click on the **File Management** button to display the File Management window.
3. In the File Management window, choose video clip(s) to back up and click **Export** button.
4. Choose backup device (USB flash drive, USB HDD, or DVD writer).
5. Click **Export** (to check backup, choose recorded file in Export interface and click  button).
6. Select items you wish to back up.

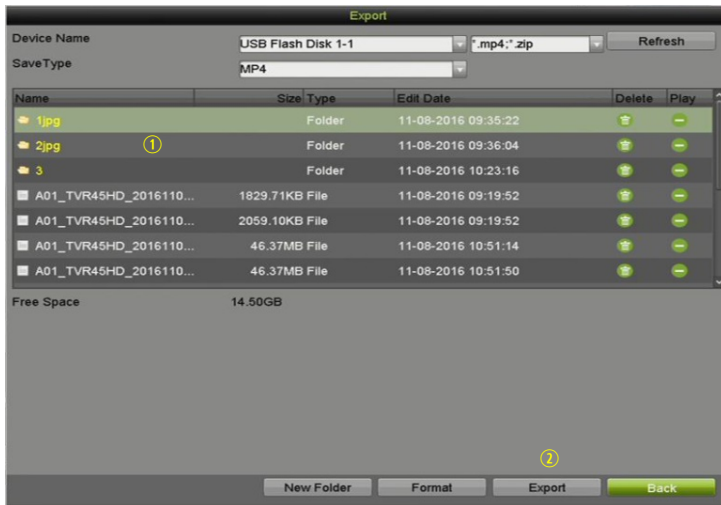
- Video and log
- Player
- Video splicing backup (merge files)

7. Click OK.





- ① **CAMERA LIST**
Select cameras to view
- ② **CALENDAR**
Select dates to view
- ③ **PLAY/STOP**
Toggles between Play and Stop
- ④ **START/STOP CLIPPING**
Toggles between Start Clipping and Stop Clipping
- ⑤ **LOCK**
Locks selected video clips to prevent them from being deleted
- ⑥ **FILE MANAGEMENT**
Displays list of saved clips, export clips from this window



- ① **VIDEO CLIPS LIST**
Select desired clips to export
- ② **EXPORT BUTTONS**
Save clips to USB device

First Choice for Security Professionals

Hikvision USA Inc., 18639 Railroad St., City of Industry, CA 91748, USA
 Hikvision Canada, 4485 Dobrin, St-Laurent, Quebec, Canada, H4R 2L8
 Telephone: +1-909-895-0400 • Toll Free in USA: +1-866-200-6690
 E-Mail: sales.usa@hikvision.com • www.hikvision.com
 © 2016-2017 Hikvision USA Inc. • All Rights Reserved
 Specifications subject to change without notice. QSG022817NA