

**HIKVISION®**



Network Turret Camera  
ECI-T22Fx

Quick Start Guide

## Manual Illustrations and Features

Graphics (screen shots, product pictures, etc.) in this document are for illustrative purposes only. Your actual product may differ in appearance. Your product might not support all features discussed in this document.

**Hikvision USA Inc.**, 18639 Railroad St., City of Industry, CA 91748, USA • Hikvision Canada, 4848 rue Levy, Saint Laurent, Quebec, Canada, H4R 2P1

Telephone: +1-909-895-0400 • Toll Free in USA: +1-866-200-6690 • E-Mail: [sales.usa@hikvision.com](mailto:sales.usa@hikvision.com) • [www.hikvision.com](http://www.hikvision.com)

COPYRIGHT ©2017-2018 Hangzhou Hikvision Digital Technology Co., Ltd.

### ALL RIGHTS RESERVED.

Any and all information, including, among others, wordings, pictures, graphs are the properties of Hangzhou Hikvision Digital Technology Co., Ltd. or its subsidiaries (hereinafter referred to be “Hikvision”). This user manual (hereinafter referred to be “the Manual”) cannot be reproduced, changed, translated, or distributed, partially or wholly, by any means, without the prior written permission of Hikvision. Unless otherwise stipulated, Hikvision does not make any warranties, guarantees or representations, express or implied, regarding to the Manual.

### About this Manual

This Manual is applicable to the ECI-T22Fx Network Turret Camera.

The Manual includes instructions for using and managing the product. Pictures, charts, images and all other information hereinafter are for description and explanation only. The information contained in the Manual is subject to change, without notice, due to firmware updates or other reasons. Please find the latest version in the company website (<http://overseas.hikvision.com/en/>).

Please use this user manual under the guidance of professionals.

### Trademarks Acknowledgement

**HIKVISION** and other Hikvision trademarks and logos are the properties of Hikvision in various jurisdictions. Other trademarks and logos mentioned below are the properties of their respective owners.

### Legal Disclaimer

TO THE MAXIMUM EXTENT PERMITTED BY APPLICABLE LAW, THE PRODUCT DESCRIBED, WITH ITS HARDWARE, SOFTWARE AND FIRMWARE, IS PROVIDED “AS IS,” WITH ALL FAULTS AND ERRORS, AND HIKVISION MAKES NO WARRANTIES, EXPRESS OR IMPLIED, INCLUDING WITHOUT LIMITATION, MERCHANTABILITY, SATISFACTORY QUALITY, FITNESS FOR A PARTICULAR PURPOSE, AND NON-INFRINGEMENT OF THIRD PARTY. IN NO EVENT WILL HIKVISION, ITS DIRECTORS, OFFICERS, EMPLOYEES, OR AGENTS BE LIABLE TO YOU FOR ANY SPECIAL, CONSEQUENTIAL, INCIDENTAL, OR INDIRECT DAMAGES, INCLUDING, AMONG OTHERS, DAMAGES FOR LOSS OF BUSINESS PROFITS, BUSINESS INTERRUPTION, OR LOSS OF DATA OR DOCUMENTATION, IN CONNECTION WITH THE USE OF THIS PRODUCT, EVEN IF HIKVISION HAS BEEN ADVISED OF THE POSSIBILITY OF SUCH DAMAGES.

REGARDING TO THE PRODUCT WITH INTERNET ACCESS, THE USE OF PRODUCT SHALL BE WHOLLY AT YOUR OWN RISKS. HIKVISION SHALL NOT TAKE ANY RESPONSIBILITIES FOR ABNORMAL OPERATION, PRIVACY LEAKAGE OR OTHER DAMAGES RESULTING FROM CYBER ATTACK, HACKER ATTACK, VIRUS INSPECTION, OR OTHER INTERNET SECURITY RISKS; HOWEVER, HIKVISION WILL PROVIDE TIMELY TECHNICAL SUPPORT IF REQUIRED.

SURVEILLANCE LAWS VARY BY JURISDICTION. PLEASE CHECK ALL RELEVANT LAWS IN YOUR JURISDICTION BEFORE USING THIS PRODUCT IN ORDER TO ENSURE THAT YOUR USE

CONFORMS THE APPLICABLE LAW. HIKVISION SHALL NOT BE LIABLE IN THE EVENT THAT THIS PRODUCT IS USED WITH ILLEGITIMATE PURPOSES.

IN THE EVENT OF ANY CONFLICTS BETWEEN THIS MANUAL AND THE APPLICABLE LAW, THE LATER PREVAILS.

**Regulatory Information**

**FCC Information**

Please take attention that changes or modification not expressly approved by the party responsible for compliance could void the user’s authority to operate the equipment.

**FCC compliance:** This equipment has been tested and found to comply with the limits for a Class B digital device, pursuant to part 15 of the FCC Rules. These limits are designed to provide reasonable protection against harmful interference in a residential installation. This equipment generates, uses and can radiate radio frequency energy and, if not installed and used in accordance with the instructions, may cause harmful interference to radio communications. However, there is no guarantee that interference will not occur in a particular installation. If this equipment does cause harmful interference to radio or television reception, which can be determined by turning the equipment off and on, the user is encouraged to try to correct the interference by one or more of the following measures:

- Reorient or relocate the receiving antenna.
- Increase the separation between the equipment and receiver.
- Connect the equipment into an outlet on a circuit different from that to which the receiver is connected.
- Consult the dealer or an experienced radio/TV technician for help

**FCC Conditions**

This device complies with part 15 of the FCC Rules. Operation is subject to the following two conditions:

1. This device may not cause harmful interference.
2. This device must accept any interference received, including interference that may cause undesired operation.

**EU Conformity Statement**



This product and - if applicable - the supplied accessories too are marked with "CE" and comply therefore with the applicable harmonized European standards listed under the EMC Directive 2014/30/EU, the RoHS Directive 2011/65/EU.



2012/19/EU (WEEE directive): Products marked with this symbol cannot be disposed of as unsorted municipal waste in the European Union. For proper recycling, return this product to your local supplier upon the purchase of equivalent new equipment, or dispose of it at designated collection points. For more information see: [www.recyclethis.info](http://www.recyclethis.info)



2006/66/EC (battery directive): This product contains a battery that cannot be disposed of as unsorted municipal waste in the European Union. See the product documentation for specific battery information. The battery is marked with this symbol, which may include lettering to indicate cadmium (Cd), lead (Pb), or mercury (Hg). For proper recycling, return the battery to your supplier

or to a designated collection point. For more information see: [www.recyclethis.info](http://www.recyclethis.info)

**Industry Canada ICES-003 Compliance**

This device meets the CAN ICES-3 (B)/NMB-3(B) standards requirements.



**Safety Instruction**

These instructions are intended to ensure that user can use the product correctly to avoid danger or property loss.

The precaution measure is divided into “Warnings” and “Cautions”

**Warnings:** Serious injury or death may occur if any of the warnings are neglected.

**Cautions:** Injury or equipment damage may occur if any of the cautions are neglected.

	
<b>Warnings</b> Follow these safeguards to prevent serious injury or death.	<b>Cautions</b> Follow these precautions to prevent potential injury or material damage.



### Warnings

- Proper configuration of all passwords and other security settings is the responsibility of the installer and/or end-user.
- In the use of the product, you must be in strict compliance with the electrical safety regulations of the nation and region. Please refer to technical specifications for detailed information.
- Input voltage should meet both the SELV (Safety Extra Low Voltage) and the Limited Power Source with 12 VDC according to the IEC60950-1 standard. Please refer to technical specifications for detailed information.
- Do not connect several devices to one power adapter as adapter overload may cause over-heating or a fire hazard.
- Please make sure that the plug is firmly connected to the power socket. When the product is mounted on wall or ceiling, the device shall be firmly fixed.
- If smoke, odor or noise rise from the device, turn off the power at once and unplug the power cable, and then please contact the service center.



### Cautions

- Make sure the power supply voltage is correct before using the camera.
- Do not drop the camera or subject it to physical shock.
- Do not touch sensor modules with fingers. If cleaning is necessary, use clean cloth with a bit of ethanol and wipe it gently. If the camera will not be used for an extended period, please replace the lens cap to protect the sensor from dirt.
- Do not aim the camera at the sun or extra bright places. Blooming or smearing may occur otherwise (which is not a malfunction), and affect the endurance of sensor at the same time.
- The sensor may be burned out by a laser beam, so when any laser equipment is in using, make sure that the surface of sensor will not be exposed to the laser beam.
- Do not place the camera in extremely hot, cold (the operating temperature shall be -10°C to 40°C), dusty or damp locations, and do not expose it to high electromagnetic radiation.

- To avoid heat accumulation, good ventilation is required for operating environment.
- Keep the camera away from liquid while in use.
- While in delivery, the camera shall be packed in its original packing, or packing of the same texture.
- Regular part replacement: a few parts (e.g. electrolytic capacitor) of the equipment shall be replaced regularly according to their average enduring time. The average time varies because of differences between operating environment and using history, so regular checking is recommended for all the users. Please contact with your dealer for more details.
- Improper use or replacement of the battery may result in hazard of explosion. Replace with the same or equivalent type only. Dispose of used batteries according to the instructions provided by the battery manufacturer.
- If the product does not work properly, please contact your dealer or the nearest service center. Never attempt to disassemble the camera yourself. (We shall not assume any responsibility for problems caused by unauthorized repair or maintenance.)

## Table of Contents

<b>1 Appearance Description .....</b>	<b>0</b>
<b>2 Installation .....</b>	<b>0</b>
<b>3 Network Camera LAN Configuration.....</b>	<b>2</b>
3.1 Wiring .....	2
3.2 Activate the Camera .....	3
<b>3.2.1 Activation via Web Browser .....</b>	<b>3</b>
<b>3.2.2 Activation via SADP Software .....</b>	<b>4</b>
<b>3.3 Modify the IP Address .....</b>	<b>5</b>
<b>4 Access via Web Browser .....</b>	<b>6</b>
<b>5 Hik-Connect .....</b>	<b>7</b>
5.1 Enable Hik-Connect for Use with Cameras .....	7
5.2 Enable Hik-Connect Service via SADP Software .....	7
5.2.1 Enable Hik-Connect via a Web Browser .....	8
5.3 Add Camera to Hik-Connect .....	8
5.4 Initialize the Memory Card .....	9

## 1 Appearance Description

This turret camera appearance is shown as the figures below.

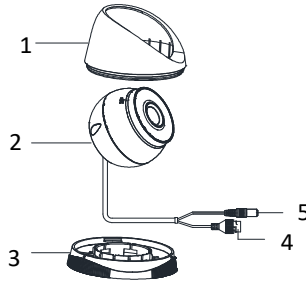


Figure 1-1 Turret Camera Overview

Table 1-1 Type Description

No.	Description
1	Enclosure
2	Camera Body
3	Mounting Base
4	Power Cord
5	Network Cable

### Note:

For cameras that support power over Ethernet (PoE), the power is passed along with data on Ethernet cabling. A switch that supports the PoE function is required.

## 2 Installation

### **Make sure of the following before you start:**

- The device included in the package is in good condition and all required parts are included.
- The standard power supply is 12 VDC or PoE (802.3af), and must be consistent with camera requirements.
- Equipment is powered-off during installation.
- The installation environment is correct.
- The wall is strong enough to withstand four times the weight of the camera and bracket.
- There are no reflective surfaces too close to the camera lens. The IR light from the camera may reflect back into the lens and cause reflection.

### Note:

Four camera types have the same installation method. We will use the III/IV turret camera as an example to illustrate the installation.

### **Before you start:**

Both wall and ceiling mounting are suitable for the turret camera. Ceiling mounting will be used as an example for this section, and can be used as a reference for wall mounting.

**Steps:**

1. Paste the drill template (supplied) to the desired mounting position on the ceiling.
2. Drill the screw holes and the cable hole in the ceiling according to the drill template.

**Note:**

Drill the cable hole if using the ceiling outlet to route the cable.

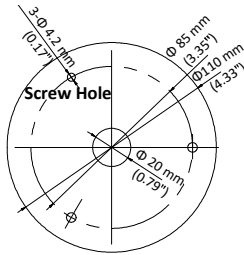


Figure 2-1 The Drill Template

3. Disassemble the camera.

- 1). Rotate the camera to align the notch with one of the marks.
- 2). Pry the mounting base with a flat object (e.g., a coin) to remove it from the camera body.

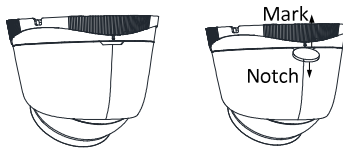


Figure 2-2 Disassemble the Camera

4. Attach the mounting base to the ceiling with the supplied screws.

**Notes:**

- The supplied screw package contains both self-tapping screws and expansion bolts.
- If the ceiling is made of cement, expansion bolts are required to fix the camera. If the ceiling is made of wood, self-tapping screws are required.



Figure 2-3 Fix the Mounting Base

5. Route the cables through the cable hole or side opening.



6. Install the camera body back to the mounting base.

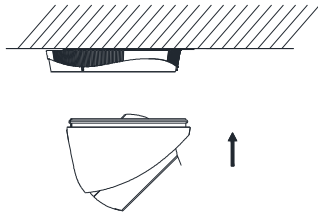


Figure 2-4 Install the Camera Body

7. Connect the power cord and network cable.

8. Power the camera on, and set the network configuration (for details, refer to 3 *Network Camera LAN Configuration* and 4 *Access via Web Browser*) to check whether the image is at an optimum angle. If not, adjust the surveillance angle.

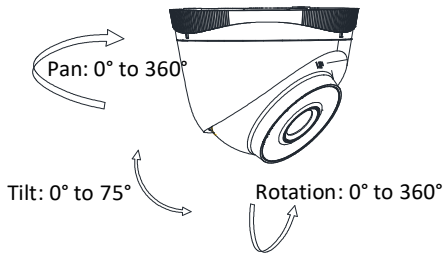


Figure 2-5 Adjust Surveillance Angle

- 1). Hold the camera body and rotate the enclosure to adjust the pan angle [0° to 360°].
- 2). Move the camera body up and down to adjust the tilt angle [0° to 75°].
- 3). Rotate the camera body to adjust the rotation angle [0° to 360°].

### 3 Network Camera LAN Configuration

---

**Note:**

The use of products with internet access carries inherent security risks. In order to avoid network attacks and information leakage, strengthen your own network protection. If the product does not work properly, contact your dealer or the nearest service center for help.

#### 3.1 Wiring

Connect the camera to the network as follows:

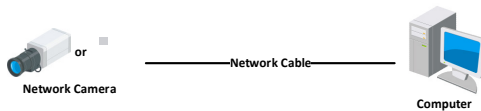


Figure 3-1 Connect Directly

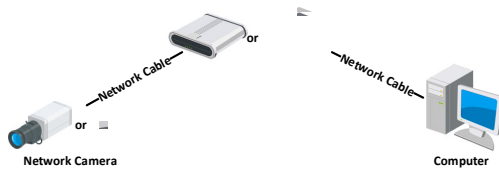


Figure 3-2 Connect via a Switch or a Router

### 3.2 Activate the Camera

Activate the camera by setting a strong password. Activation via web browser, activation via SADP, and activation via client software are supported. Activation via SADP software and web browser will be used as examples to introduce camera activation.

**Note:**

Refer to the Network Camera User Manual for activation via client software.

#### 3.2.1 Activation via Web Browser

**Steps:**

1. Power the camera on. Connect the camera to your computer or the switch/router that your computer connects to.
2. Input the IP address into the address bar of the Web browser, and press **Enter** to enter the activation interface.

**Notes:**

- The camera's default IP address is 192.168.1.64.
- The computer and the camera should belong to the same subnet.
- For cameras that have DHCP enabled by default, use the SADP software to search for the IP address.

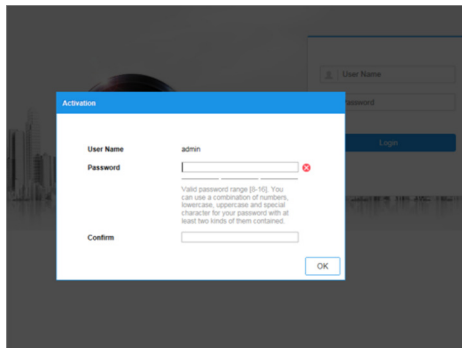


Figure 3-3 Activation Interface (Web)

3. Create and input a password.



**STRONG PASSWORD RECOMMENDED** – We highly recommend creating a strong password of your own choosing (using a minimum of eight characters, including upper case letters, lower case letters, numbers, and special characters) in order to

*increase the security of your product. We recommend regularly resetting your password on a weekly or monthly basis, especially in high security systems.*

4. Confirm the password.
5. Click **OK** to save the password and enter the live view interface.

### 3.2.2 Activation via SADP Software

SADP software is used for detecting online devices, activating cameras, and resetting passwords.

SADP can be obtained from the supplied disk or the official website, and installed by following the prompts.

Follow the steps to activate the camera.

#### Steps:

1. Run SADP to search for online devices.
2. Check the device status from the device list, and select the inactive device.

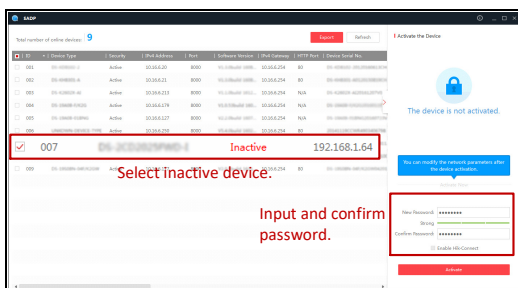


Figure 3-4 SADP Interface

#### Note:

SADP supports batch camera activations. Refer to the SADP user manual for further details.

3. Create, input, and confirm the password.

**STRONG PASSWORD RECOMMENDED** – We highly recommend creating a strong password of your own choosing (using a minimum of 8 characters, including upper case letters, lower case letters, numbers, and special characters) in order to increase the security of your product. We recommend regularly resetting your password on a weekly or monthly basis, especially in high security systems.

#### Note:

You can enable the Hik-Connect service for the device during activation. Refer to Chapter 5.1 for detailed information.

1. Click **Activate** to start activation.

You can check whether the activation is complete in the popup window. If activation failed, make sure that the password meets the requirements, and try again.

### 3.3 Modify the IP Address

**Purpose:**

To view and configure the camera via LAN (Local Area Network), you need to connect the network camera in the same subnet as your PC.

Use the SADP software or client software to search and change the IP address of the device. IP Address modification via SADP software will be used as an example.

In order to modify the IP address via client software, refer to the user manual of the client software.

**Steps:**

1. Run SADP.
2. Select an active device.
3. Change the device IP address to the same subnet as your computer by either modifying the IP address manually, or by checking the **Enable DHCP** checkbox.

Modify Network Parameters

Enable DHCP  
 Enable Hik-Connect

Device Serial No.: XX-XXXXXXXX-XXXXXXXXXXXXXXXXXX

IP Address: 192.168.1.64

Port: 8000

Subnet Mask: 255.255.255.0

Gateway: 192.168.1.1

IPv6 Address: ::

IPv6 Gateway: ::

IPv6 Prefix Length: 0

HTTP Port: 80

Security Verification

Admin Password: [ ]

Modify

[Forgot Password](#)

Figure 3-5 Modify the IP Address

**Note:**

Hik-Connect can be enabled during activation. Refer to Chapter 5.1 for detailed information.

4. Input the admin password and click **Modify** to complete IP address modification. SADP supports batch IP address modification. Refer to the SADP user manual for details.

## 4 Access via Web Browser

---

### System Requirement:

Operating System: Microsoft Windows XP SP1 and above

CPU: 2.0 GHz or greater

RAM: 1 Gb or greater

Display: 1024×768 resolution or higher

Web Browser: Internet Explorer 8.0 or higher, Apple Safari 5.0.2 or higher, Mozilla Firefox 5.0 or higher, and Google Chrome 18 or higher

### Steps:

1. Open the Web browser.
2. In the browser address bar, input the IP address of the network camera, and press the **Enter** key to enter the login interface.

#### Note:

The default IP address is 192.168.1.64. It is suggested that you change the IP address to the same subnet as your computer.

3. Input the user name and password.

The admin user should configure the device accounts and user/operator permissions properly. Delete the unnecessary accounts and user/operator permissions.

#### Note:

The device IP address gets locked if the admin user performs 7 failed password attempts (5 attempts for the user/operator).

4. Click **Login**.

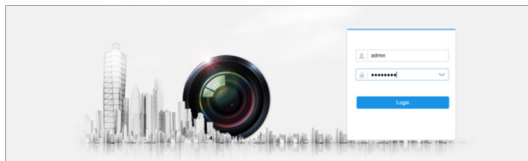


Figure 4-1 Login Interface

5. Install the plug-in before viewing the live video and managing the camera. Follow the installation prompts to install the plug-in.

#### Note:

You may have to close the web browser to complete plug-in installation.

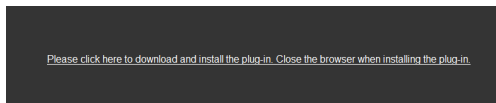


Figure 4-2 Download Plug-in

6. Reopen the web browser after plug-in installation and repeat steps 2 to 4 in order to login.

#### Note:

For further configuration instructions, please refer to the network camera user manual.

## 5 Hik-Connect

---

### **Purpose:**

Hik-Connect is a mobile application to view live camera images, receive alarm notifications, etc.

### 5.1 Enable Hik-Connect for Use with Cameras

#### **Purpose:**

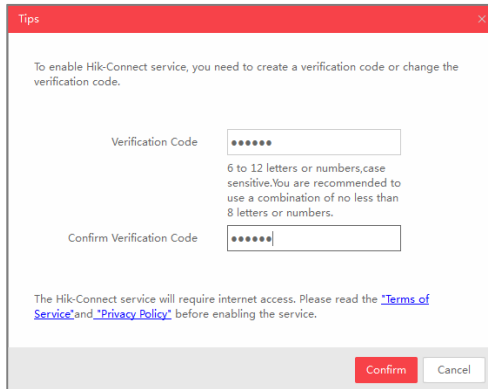
Enable Hik-Connect should on your camera before using the service.

You can enable the service either via SADP software or a Web browser.

### 5.2 Enable Hik-Connect Service via SADP Software

#### **Steps:**

1. Check the **Enable Hik-Connect** checkbox:
  - 1). For the “Activate the Device” page that appears during camera activation, refer to Chapter 3.2.2.
  - 2). For the “Modify Network Parameters” page that appears while modifying the IP address, refer to Chapter 3.3.
2. Create or change the verification code.



The image shows a 'Tips' dialog box with a red title bar. The main text reads: 'To enable Hik-Connect service, you need to create a verification code or change the verification code.' Below this, there are two input fields. The first is labeled 'Verification Code' and contains six dots. To its right, a text block specifies: '6 to 12 letters or numbers, case sensitive. You are recommended to use a combination of no less than 8 letters or numbers.' The second input field is labeled 'Confirm Verification Code' and also contains six dots. At the bottom of the dialog, there is a note: 'The Hik-Connect service will require internet access. Please read the ["Terms of Service"](#) and ["Privacy Policy"](#) before enabling the service.' At the bottom right, there are two buttons: 'Confirm' (in red) and 'Cancel' (in white).

Figure 5-1 Verification Code Setting (SADP)

#### **Note:**

The verification code is required when adding the camera to Hik-Connect.

3. Click and read the “Terms of Service” and “Privacy Policy.”
4. Confirm the settings.

### 5.2.1 Enable Hik-Connect via a Web Browser

#### **Before You Start:**

Activate the camera before enabling the service. Refer to Chapter 3.2. for more information.

#### **Steps:**

1. Access the camera via the Web browser. Refer to Chapter 4.
2. Enter the platform access configuration interface, as follows: **Configuration > Network > Advanced Settings > Platform Access.**

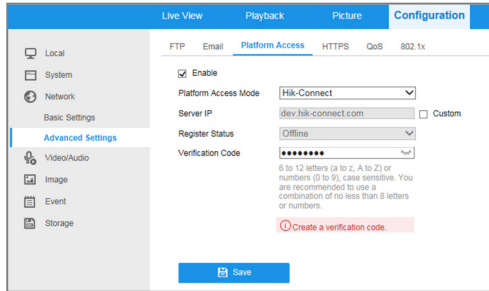


Figure 5-2 Platform Access Configuration (Web)

3. Set the **Platform Access Mode** to **Hik-Connect**.
4. Check the **Enable** checkbox.
5. Click and read the “Terms of Service” and “Privacy Policy” in the pop-up window.
6. Create or change the verification code for the camera.

#### **Note:**

A verification code is required when you add the camera to Hik-Connect.

7. Save the settings.

### 5.3 Add Camera to Hik-Connect

#### **Before You Start:**

Enable Hik-Connect on the camera before adding it to your Hik-Connect account. See Chapter 5.1.

#### **Steps:**

1. Use a network cable to connect camera to a router if the camera does not support Wi-Fi.




Figure 5-3 Connect a Router

**Note:**

After the camera connects to the network, wait one minute before using the camera with Hik-Connect.

2. Add the camera to the Hik-Connect app:

- **If Accessing the Camera through an NVR:** Tap “+” on the upper-right corner and scan the QR code that appears in the NVR interface.
- **If Accessing the Camera through a Web Browser:** Tap the  icon and type in the camera’s serial number.

3. Input your camera’s verification code.

**Note:**

The required verification code is created or changed when you enable Hik-Connect on your camera.

Forgotten verification codes can be recovered in the **Platform Access** configuration page via the web browser.

4. Follow prompts to set up the network connection and add the camera to your Hik-Connect account.

**Note:**

For detailed information, refer to the Hik-Connect user manual.

#### 5.4 Initialize the Memory Card

**Note:**

The microSD memory card is not included with the camera and must be purchased separately.

**Steps:**

1. Check the status of the memory card by tapping on the Storage Status in the Device Settings interface.
2. If the memory card status displays as Uninitialized, tap to initialize it. The status will then change to Normal. You can then start recording any event-triggered video in the camera such as motion detection-generated videos.





First Choice for Security Professionals