



DS-D60C-B
How To Deploy Hikvision's Flow Control
Quick Start Guide

Title:	How to Deploy Hikvision's Flow Control Solution on Digital Signage	Version:	v1.1.0.50	Build:	200527	Date:	5/30/2020	
Product:	Digital Signage and Focsign Lite						Page:	2 of 28

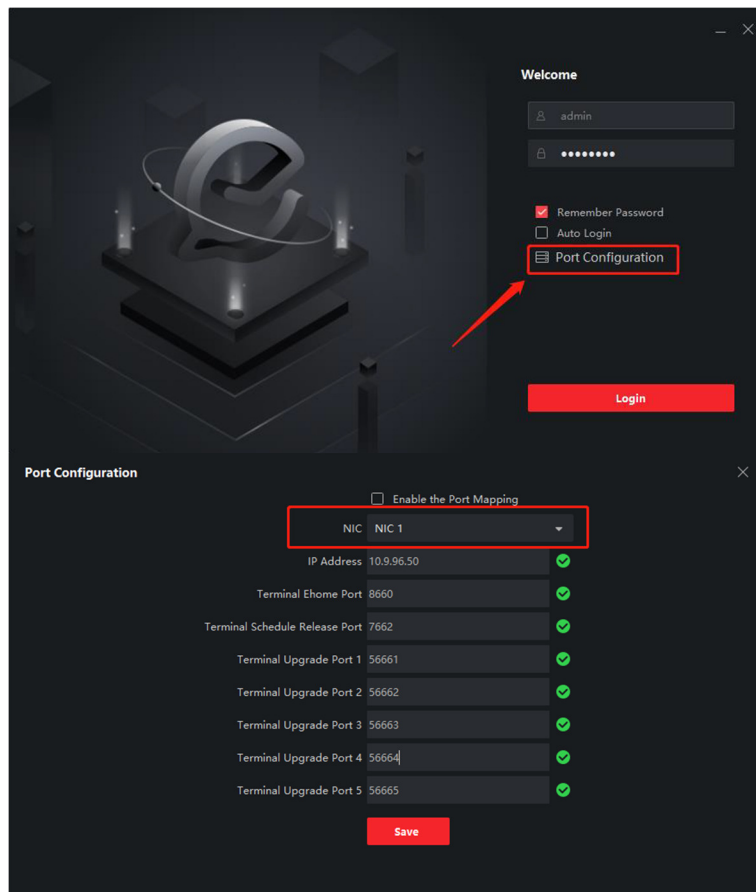
How To Deploy Hikvision's Flow Control Solution on Digital Signage

Installation of Focsign Lite Client

1. Install Focsign Lite Client

- The newest version: v1.1.0.50 build 200527
- The language of the client will be adapted to the system's language. These languages are supported: Chinese, English, French, Germany, Spanish, Italian, and Polish.

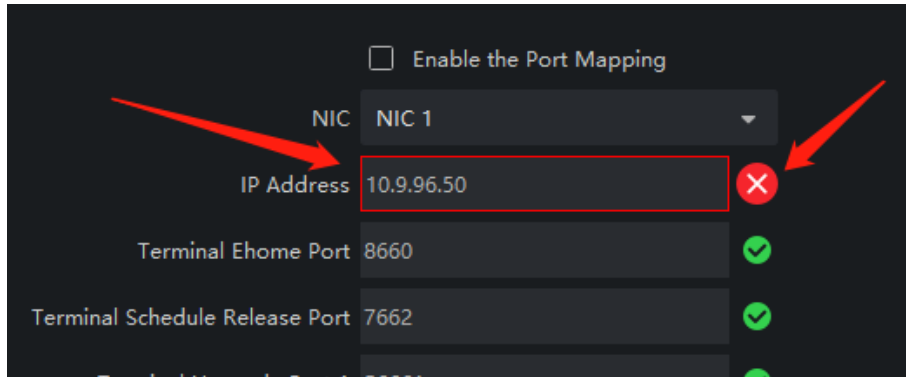
2. The first time you open Focsign Lite, click the "Port Configuration" button.



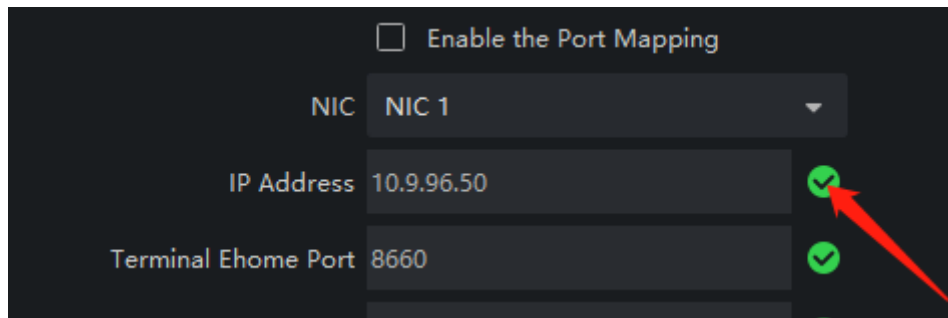
3. Choose the NIC that is in the same network as the digital signage. Be sure all icons have green checkmarks.

Title:	How to Deploy Hikvision's Flow Control Solution on Digital Signage	Version:	v1.1.0.50	Build:	200527	Date:	5/30/2020	
Product:	Digital Signage and Focsign Lite						Page:	3 of 28

4. If the IP address is not correct, it will show like this:



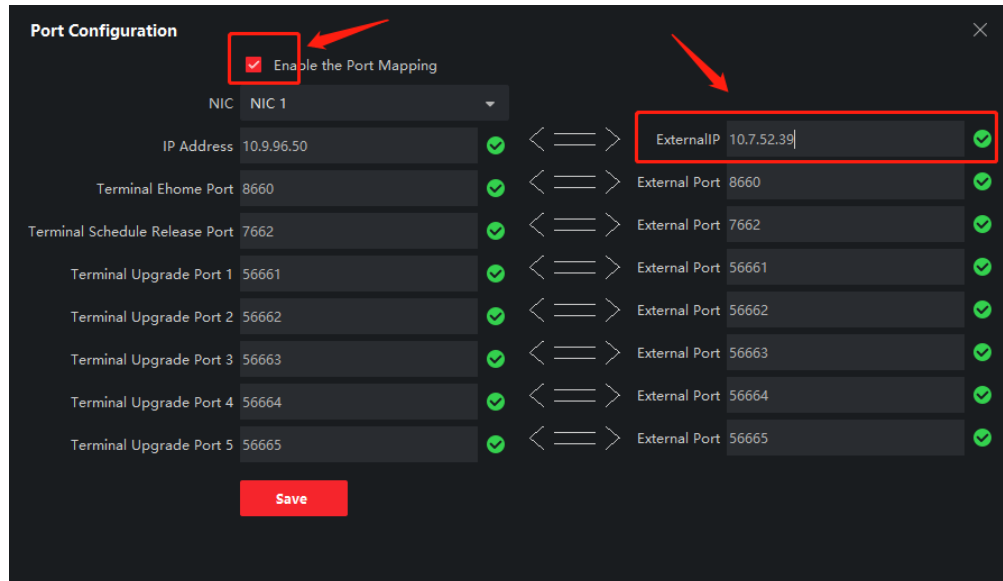
5. Input the IP address manually (your PC's IP must be in same network as the signage). When the IP is right, the red cross mark will turn to a green check mark.



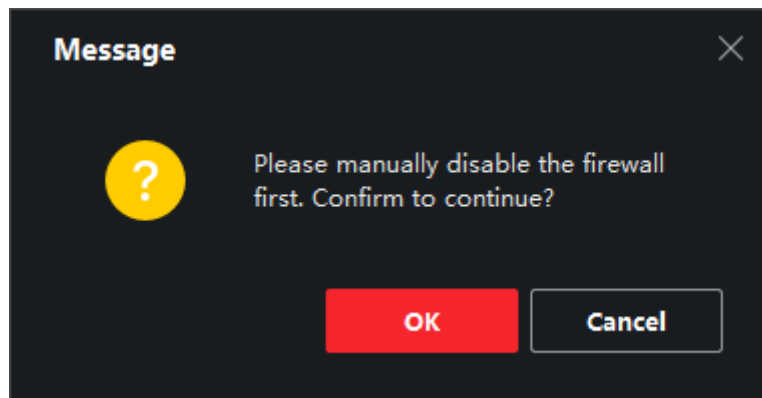
6. If you need to do port mapping, click "Enable the Port Mapping." Follow the actually setting, input the external IP and ports.

NOTE: You still need to do port mapping in the router. This part is only for the client to get the port mapping parameters.

Title:	How to Deploy Hikvision's Flow Control Solution on Digital Signage	Version:	v1.1.0.50	Build:	200527	Date:	5/30/2020	
Product:	Digital Signage and Focsign Lite						Page:	4 of 28



7. Click the **Save** button. It will show a firewall warning. Disable all firewalls in the system.

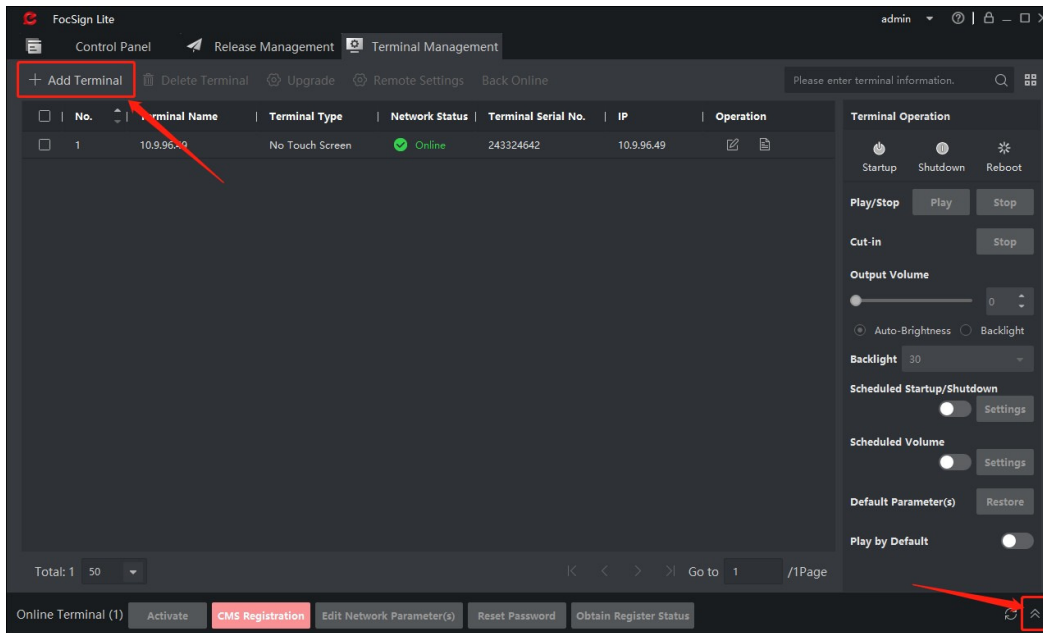


8. After checking, log in to the client.

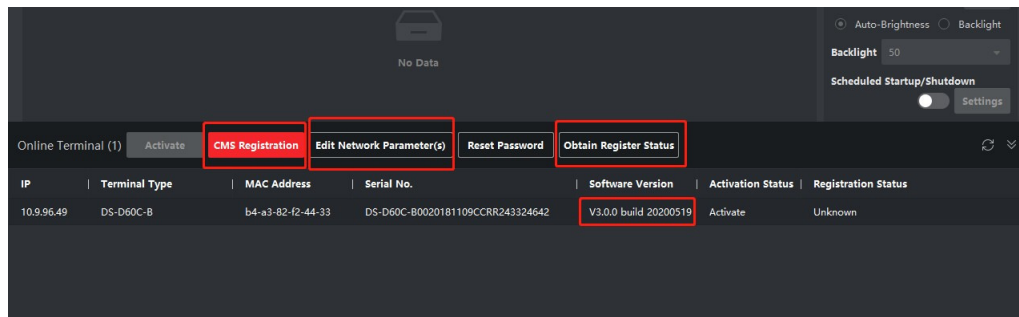
Terminal Management

1. Add the terminal in the local network.
 - 1) Click the terminal management tag.
 - 2) There is a unfold button at right bottom corner. Click the button and the SADP tool will show.

Title:	How to Deploy Hikvision's Flow Control Solution on Digital Signage	Version:	v1.1.0.50	Build:	200527	Date:	5/30/2020	
Product:	Digital Signage and Focsign Lite						Page:	5 of 28



NOTE: You can see all of the devices in the local network. You can also see all the terminal information. It also has “CMS Registration,” “Edit Network Parameter,” and “Obtain Register Status.”



- 3) Choose the terminal in the local network and click “CMS Registration.”
- 4) Input the password and the device will automatically show at the top.

NOTE: This process takes some time, please wait for 1–2 minutes.

Title:	How to Deploy Hikvision's Flow Control Solution on Digital Signage	Version:	v1.1.0.50	Build:	200527	Date:	5/30/2020	
Product:	Digital Signage and Focsign Lite						Page:	6 of 28

CMS Registration

IP Type: IPv4

Server IP Address: 10.9.96.50

Server Port: 8660

Terminal Password:

OK Cancel

No.	Terminal Name	Terminal Type	Network Status	Terminal Serial No.	IP	Operation
1	10.9.96.49	No Touch Screen	Online	243324642	10.9.96.49	

- 5) Click "Edit Network Parameter" to change the device's network parameters. Click "Obtain Register Status" to check device's register status.

Change Terminal

IP Address: 10.9.96.49

Port No.: 8000

Subnet Mask: 255.255.255.0

Gateway: 10.9.96.254

Terminal Password:

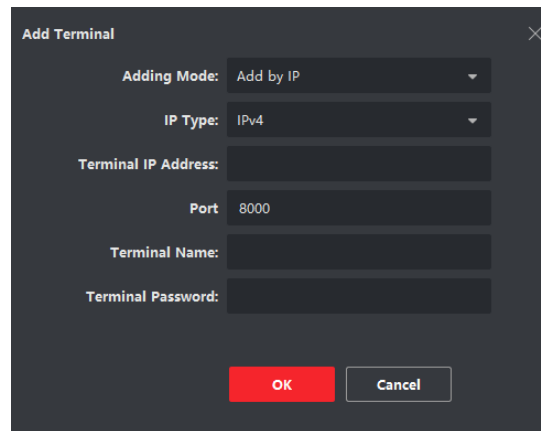
OK Cancel

IP	Terminal Type	MAC Address	Serial No.	Software Version	Activation Status	Registration Status
10.9.96.49	DS-D60C-B	b4-a3-82-f2-44-33	DS-D60C-B0020181109CCRR243324642	V3.0.0 build 20200519	Activate	Registered(10.9.96.50)

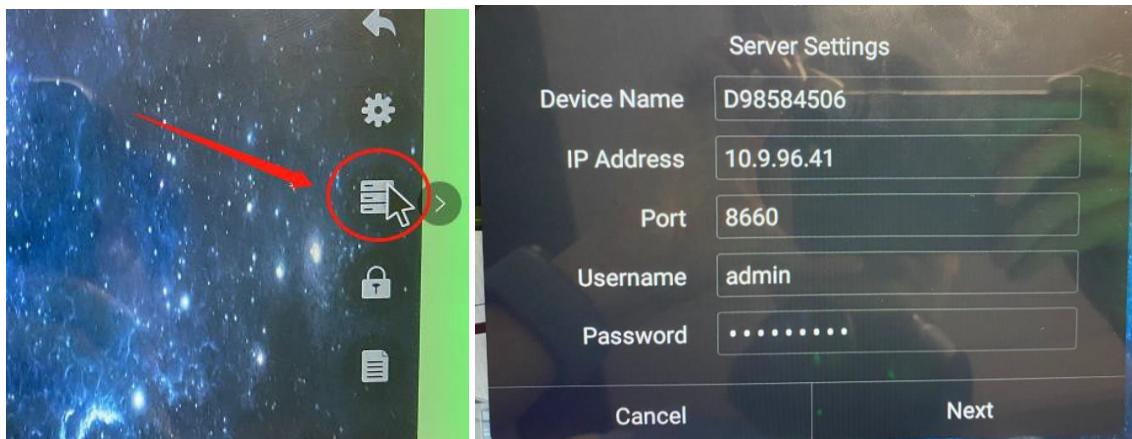
Title:	How to Deploy Hikvision's Flow Control Solution on Digital Signage	Version:	v1.1.0.50	Build:	200527	Date:	5/30/2020	
Product:	Digital Signage and Focsign Lite						Page:	7 of 28

2. Add terminal in different network segments

- 1) Click the add button at right top corner. There are two ways to add the terminal in different network segments: add by IP and add by terminal SN.



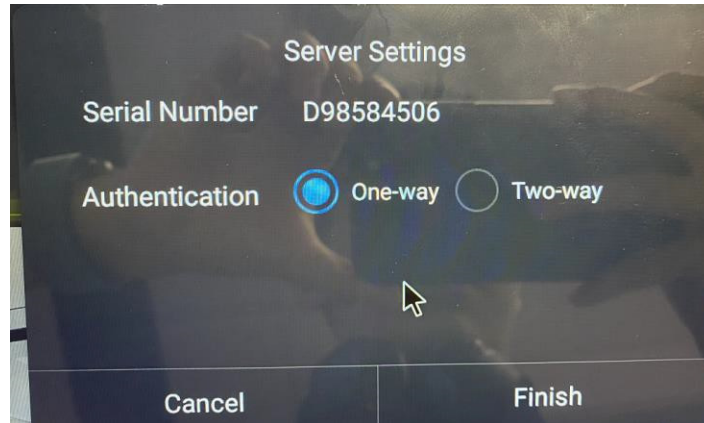
- **Add by IP:** Input the IP address of device. The default port should be 8000. Input the name and password to add the device.
- **Add by SN:** This way is usually used as a public network solution. You need to first input the server's information in the terminal. Follow these steps:
 - a. Click right middle edge of screen in the Focsign Player. Click the server information button like in the following pictures.



- b. Input the PC's IP address at the "IP Address" box. The default port should be 8660. The username and password should be Lite client's.
- c. Click **Next**.

Title:	How to Deploy Hikvision's Flow Control Solution on Digital Signage	Version:	v1.1.0.50	Build:	200527	Date:	5/30/2020	
Product:	Digital Signage and Focsign Lite						Page:	8 of 28

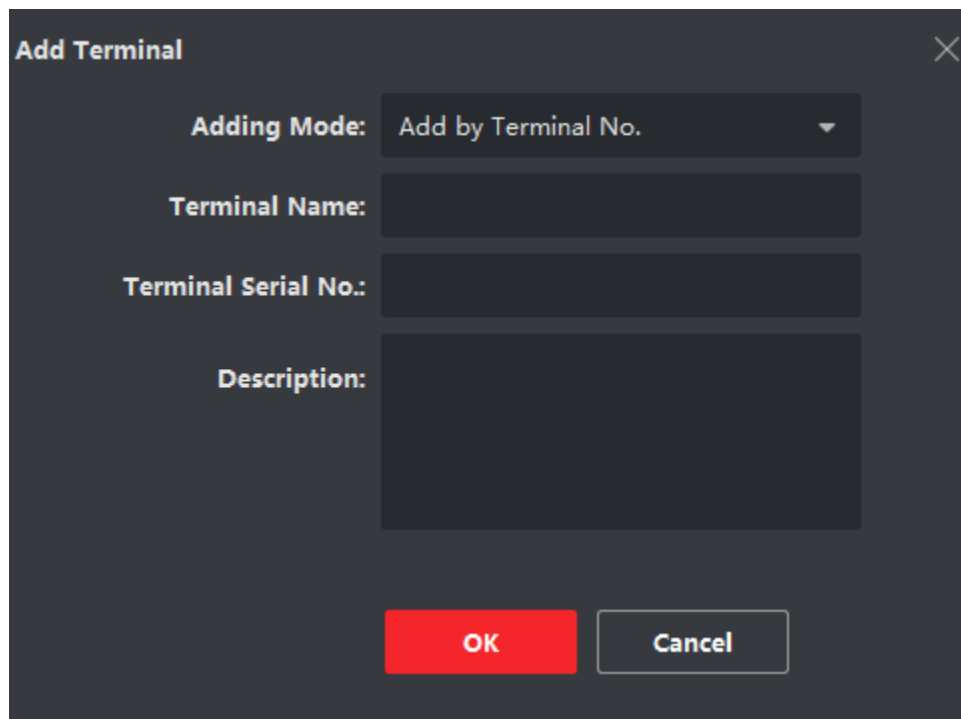
d. Choose **One-way**.



e. Choose "Add by Terminal NO." mode.

f. Input terminal name and terminal's SN.

g. Wait for some time and the device will be online.

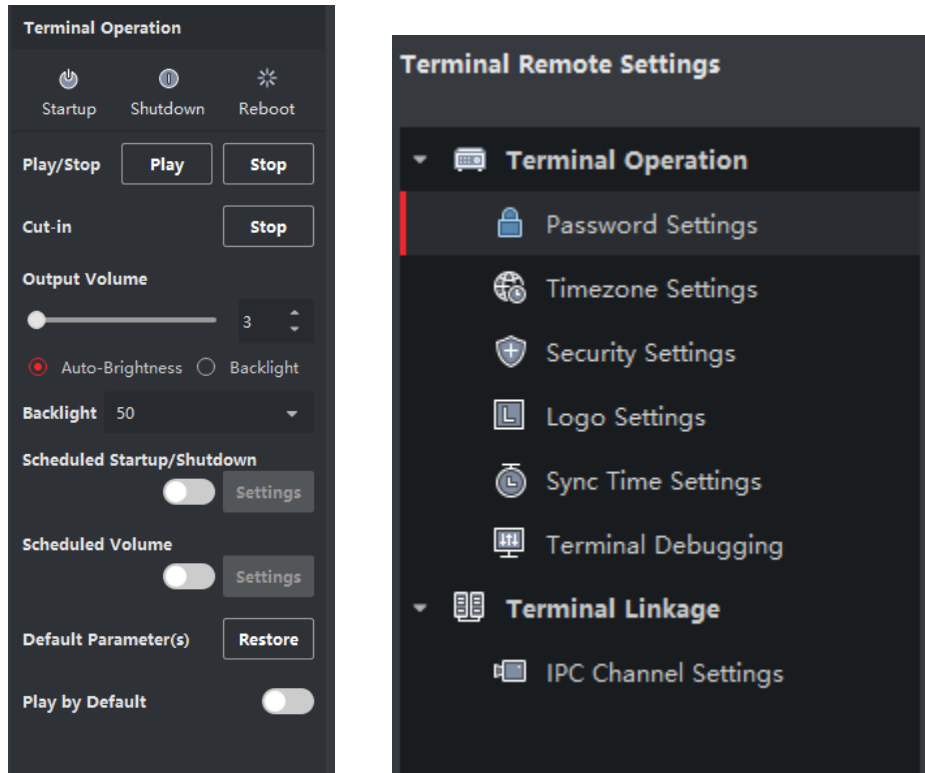


Title:	How to Deploy Hikvision's Flow Control Solution on Digital Signage	Version:	v1.1.0.50	Build:	200527	Date:	5/30/2020	
Product:	Digital Signage and Focsign Lite						Page:	9 of 28

Device Configuration

- **Basic Configuration**

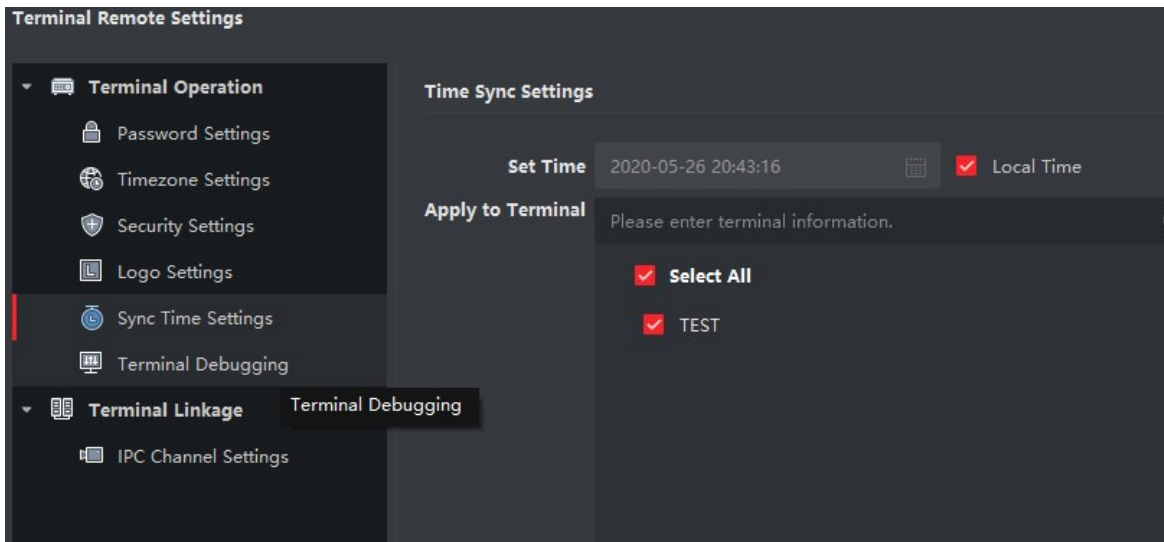
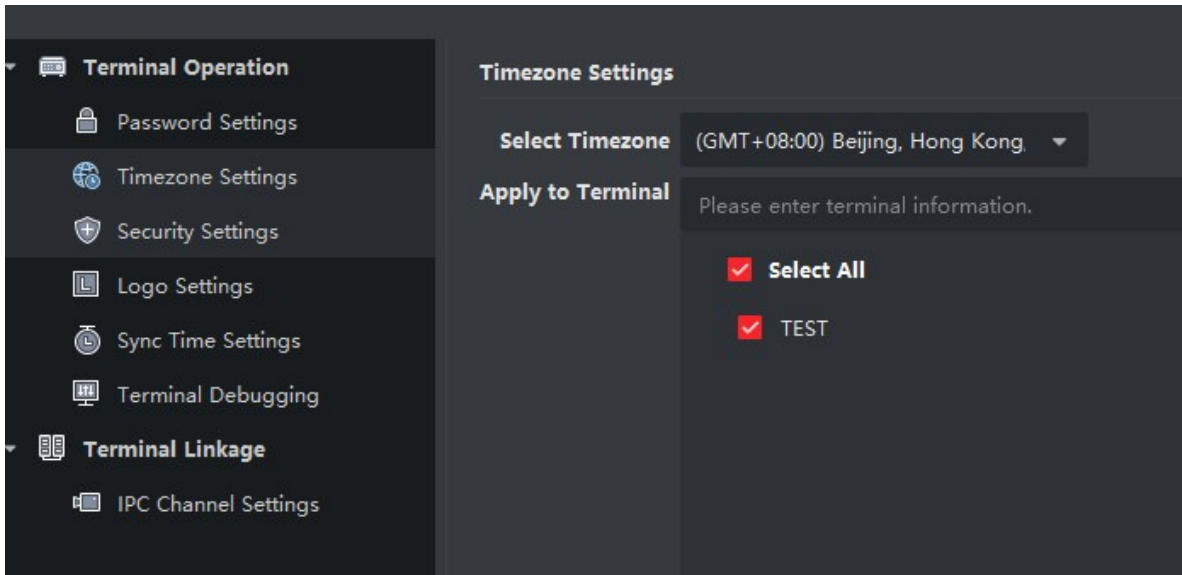
To the right of the device list, there is a terminal configuration menu with some functions: Device Startup and Shutdown, Reboot, Play Control, Volume Control, Backlight Control and others.



1. At the terminal management interface, choose a device and click remote configuration. You can change password, synchronize time, and set time zone of device.

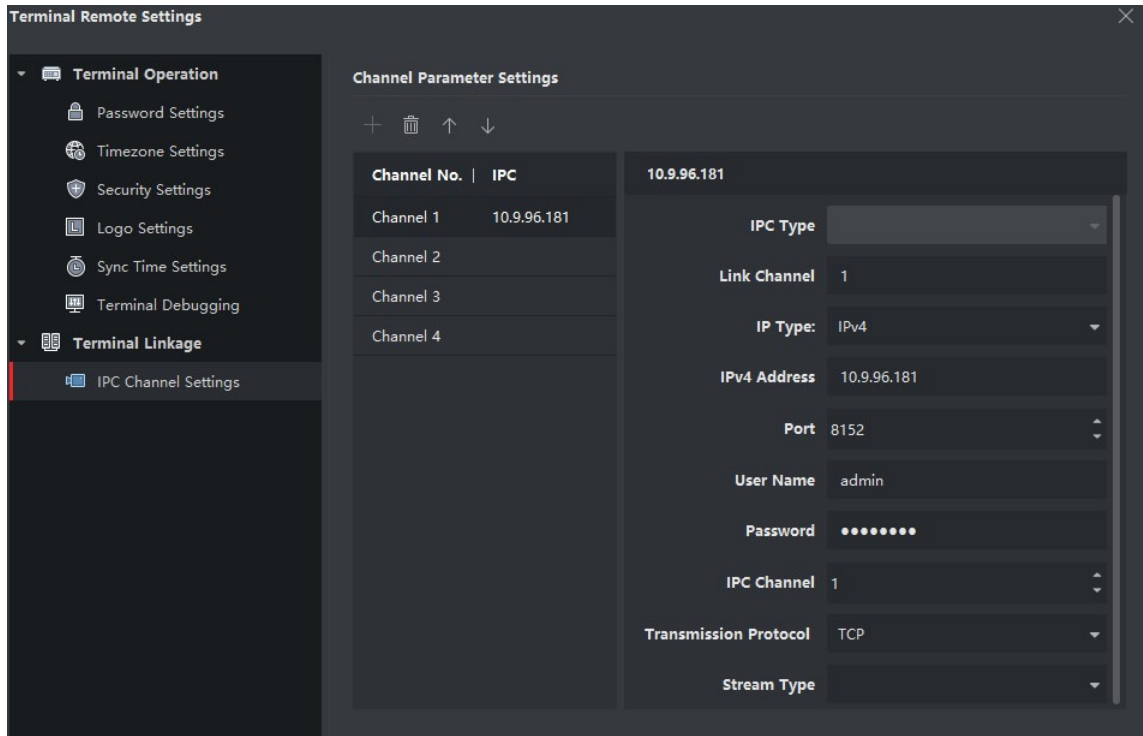
EXAMPLES: **Time Zone Setting:** New device needs to set up the correct time zone first and synchronize the time with your computer.

Title:	How to Deploy Hikvision's Flow Control Solution on Digital Signage	Version:	v1.1.0.50	Build:	200527	Date:	5/30/2020	
Product:	Digital Signage and Focsign Lite						Page:	10 of 28



IPC Channel Setting: These four channels will be linked with the terminal. When you drag IPC1-4 in the program, it will automatically choose these four channels.

Title:	How to Deploy Hikvision's Flow Control Solution on Digital Signage	Version:	v1.1.0.50	Build:	200527	Date:	5/30/2020	
Product:	Digital Signage and Focsign Lite						Page:	11 of 28



Check Terminal Status: Click the icon in the following picture. You can see the terminal information and the content displayed at the terminal in real time.

✓	No.	Terminal Name	Terminal Type	Network Status	Terminal Serial No.	IP	Operation
✓	1	TEST	No Touch Screen	Online	243324642	10.9.96.49	

View Terminal Details

Terminal Name: TEST

Resolution: 1920*1080

Installation Type: Landscape Mode

Serial No.: 243324642

Software Version: V3.0.0 build 20200519

Hardware Version: 70173

System Version: A6.0.1

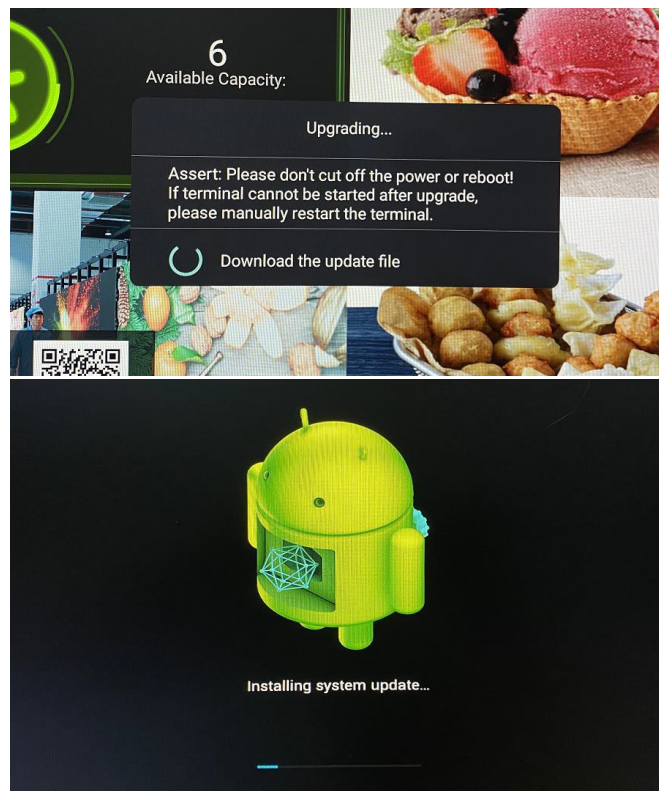
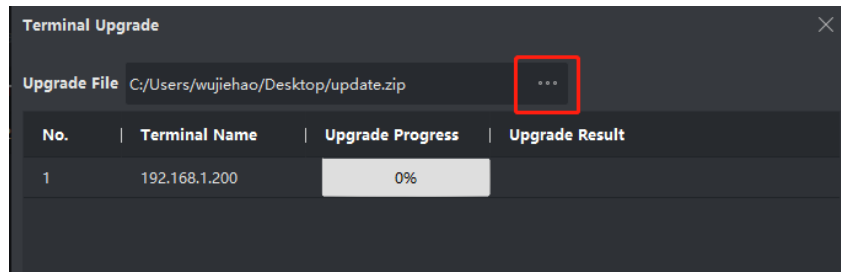
Registration Time: 2020-05-26 20:37:31

Title:	How to Deploy Hikvision's Flow Control Solution on Digital Signage	Version:	v1.1.0.50	Build:	200527	Date:	5/30/2020
Product:	Digital Signage and Focsign Lite					Page:	12 of 28

Device Update

- Remote Upgrading

1. Download the OTA file. Please follow this request: D60C-B: 2.4.1_20200612_Only for Box_OTA_SX.zip
2. Other type: 2.4.1_20200612_Cannot Use for Box.zip
3. After downloading, unzip the OTA file to "update.zip."
4. Click "Remote settings"
5. Choose the correct zip file, and click "OK." It will show this warning on the terminal. Wait a few minutes for the terminal to reboot automatically. After rebooting, upgrading is finished.



Title:	How to Deploy Hikvision's Flow Control Solution on Digital Signage	Version:	v1.1.0.50	Build:	200527	Date:	5/30/2020	
Product:	Digital Signage and Focsign Lite						Page:	13 of 28



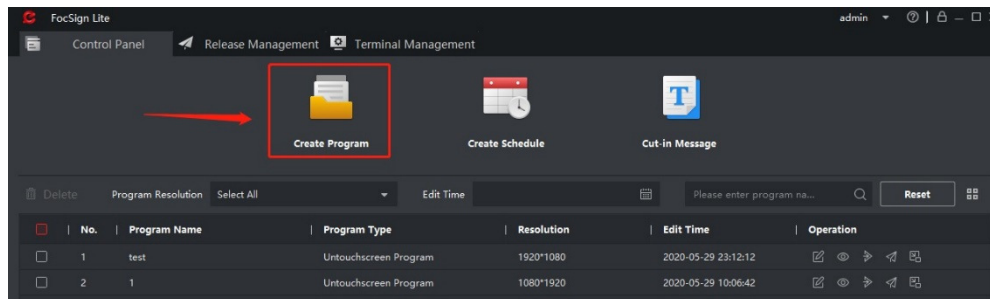
6. You can check the software version in the device management interface

- **Local Update**

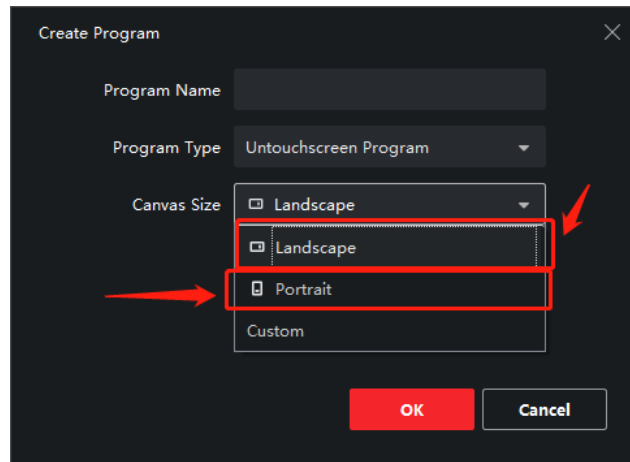
You need a USB disk with FAT32 format. Unzip the OTA file to "update.zip," and move the zip file to the root path of USB disk. Insert the USB disk to the device, and it will remind you to upgrade the device. This process is same as remote upgrading.

Create Program


- **Program Panel**

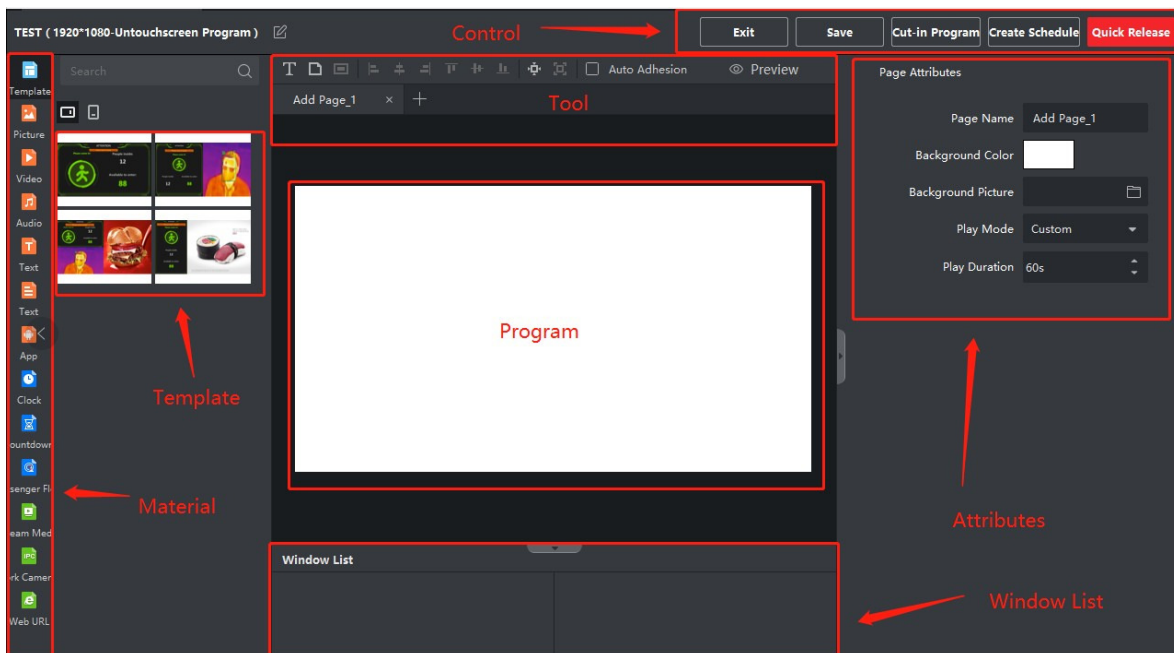


Title:	How to Deploy Hikvision's Flow Control Solution on Digital Signage	Version:	v1.1.0.50	Build:	200527	Date:	5/30/2020	
Product:	Digital Signage and Focsign Lite						Page:	14 of 28



1. In the control panel, click "Create Program."
2. Choose right canvas size of your device.

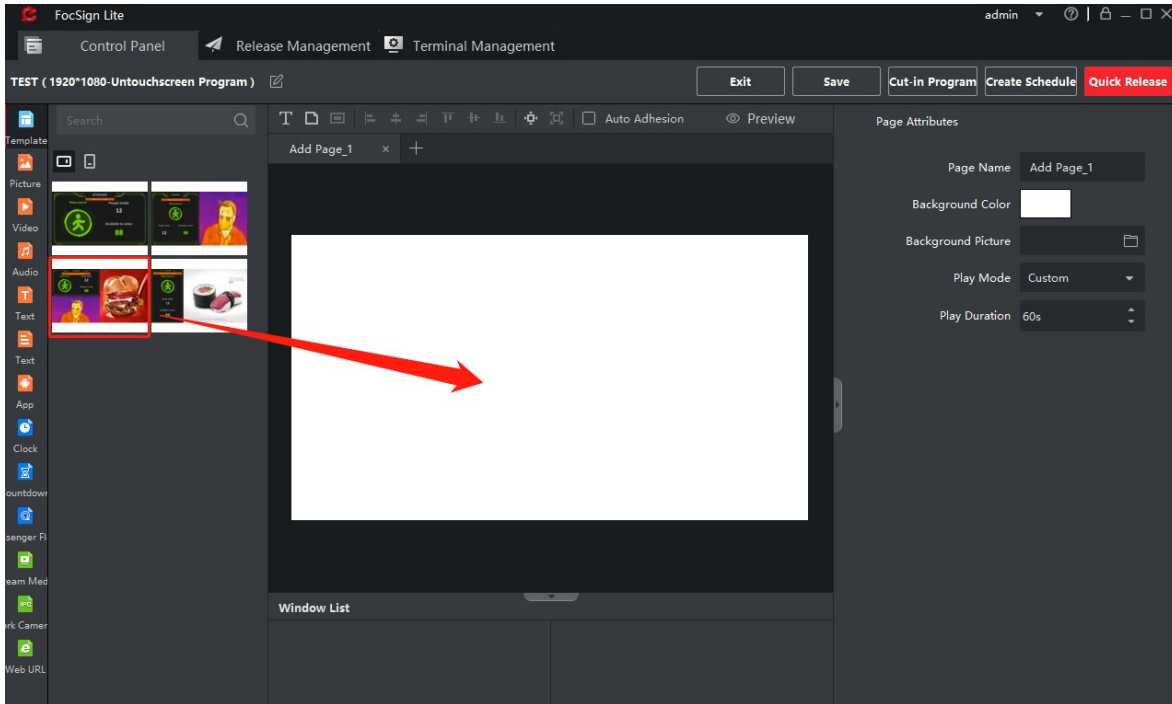
On the left side, you can see a material bar. The material library is at the right of the bar. On the top side, there are control bar and tool bar. The program preview interface is in the middle. The right side is parameter-setting menu of playing. The bottom side is window list and material list. If you need to change the program canvas, you can click the  button right of the program's name.



- **Template**

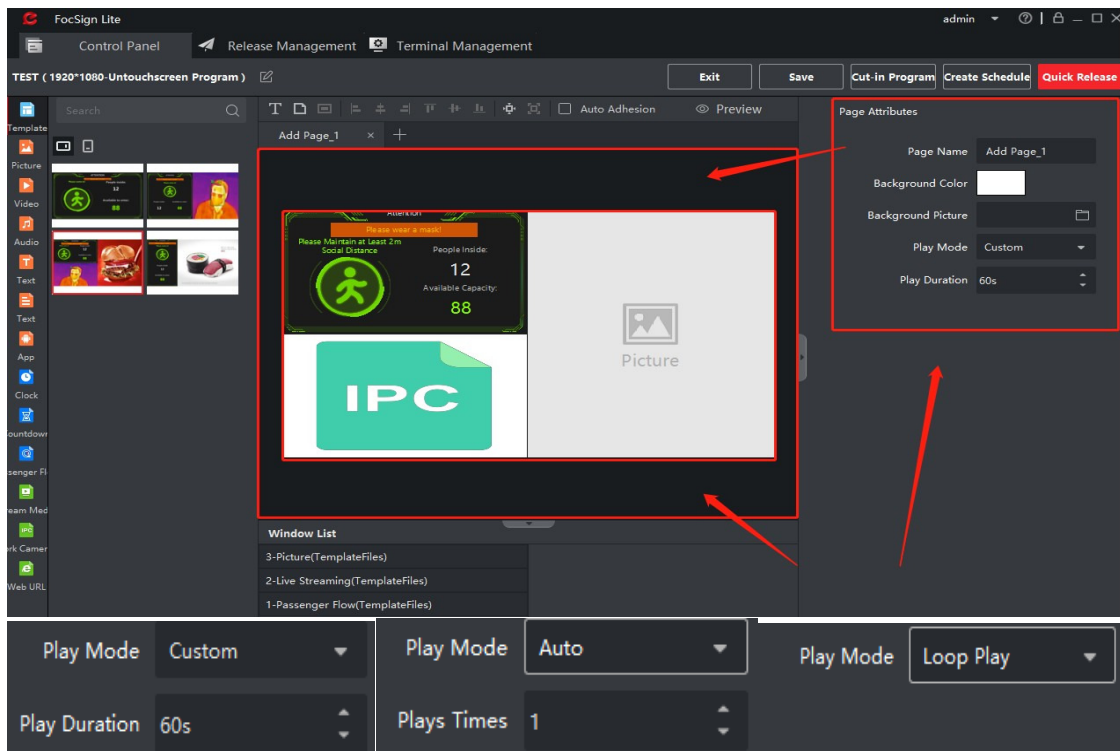
There are four templates for each canvas. For example, let's drag the third template into the program.

Title:	How to Deploy Hikvision's Flow Control Solution on Digital Signage	Version:	v1.1.0.50	Build:	200527	Date:	5/30/2020	
Product:	Digital Signage and Focsign Lite						Page:	15 of 28



- **Page Attribution**

Click the black area around the canvas. You can change all page attributions on the right side.



Title:	How to Deploy Hikvision's Flow Control Solution on Digital Signage	Version:	v1.1.0.50	Build:	200527	Date:	5/30/2020
Product:	Digital Signage and Focsign Lite					Page:	16 of 28

There are three page modes: **Custom**, **Auto**, and **Loop Play**.

- **Custom:** You can set the play duration of the page. After this time, the program will turn to the next page. If there is only one page in your program, the page will refresh after this time.

NOTE: After the page changes or is refreshed, the people counting data will be cleared

- **Auto:** You can set the play times of this page. The play duration depends on the maximum time of the materials. After these times, the program will turn to the next page. If there is only one page in your program, the page will refresh.

NOTE: After the page changes or is refreshed, the people counting data will be cleared.

- **Loop Play:** Loop this page. The page won't change or refresh.

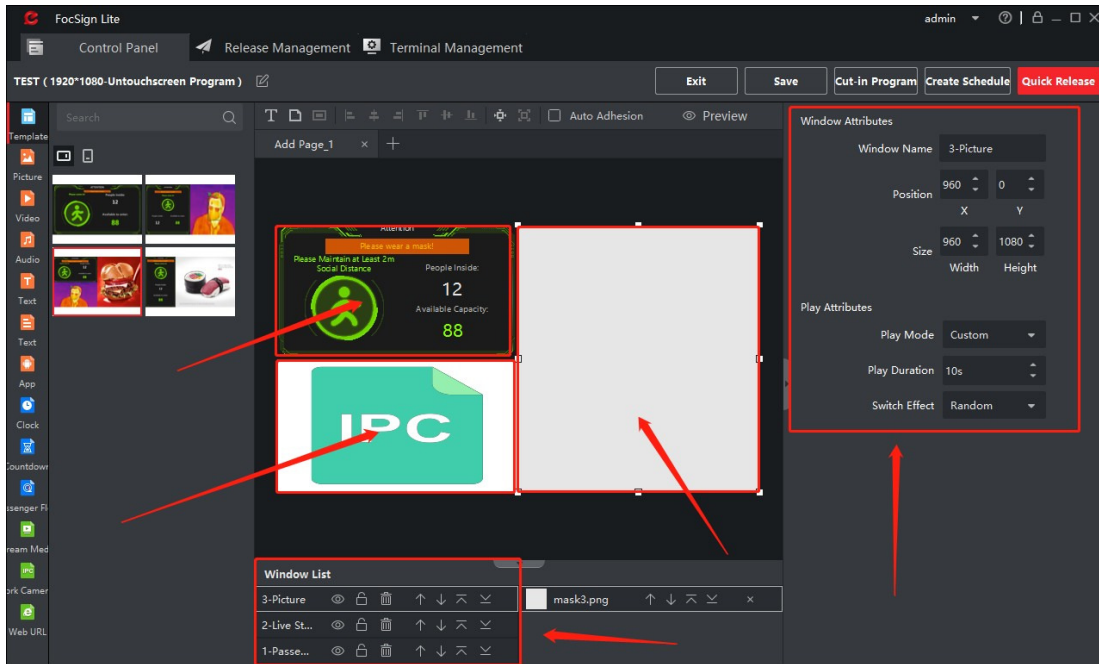
NOTE: For this solution, this mode is the most recommended.

- **Window and Material Attributions**

NOTE: You can't change the size of the window the first time after you create the program. You can save the program and re-edit it to change the size of the windows.

- Click the window in the canvas or the window's name in the window list. You can change the attributions of windows and materials. The play time's priority of the pages is higher than the material's. That means if the play time of the page is exhausted, it will change the page or refresh the page no matter if the material's time has ended or not.

Title:	How to Deploy Hikvision's Flow Control Solution on Digital Signage	Version:	v1.1.0.50	Build:	200527	Date:	5/30/2020	
Product:	Digital Signage and Focsign Lite						Page:	17 of 28



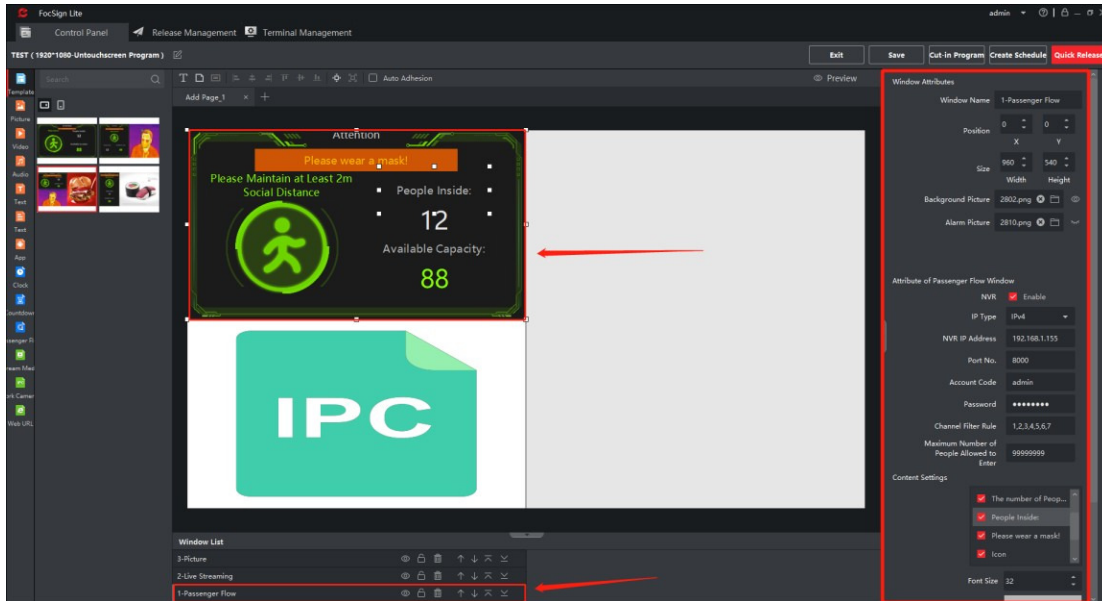
- **Flow Control Window Attributions (with NVR)**

NOTE: The flow control window supports 256 channels in total. These channels can be people counting camera or mask detection camera.

Click the flow control window to change its attributions on the right side.

NOTE: The NVR needs to enable the "Notify Surveillance Center" linkage. You can check the supported NVR models in the Excel list.

Title:	How to Deploy Hikvision's Flow Control Solution on Digital Signage	Version:	v1.1.0.50	Build:	200527	Date:	5/30/2020
Product:	Digital Signage and Focsign Lite					Page:	18 of 28



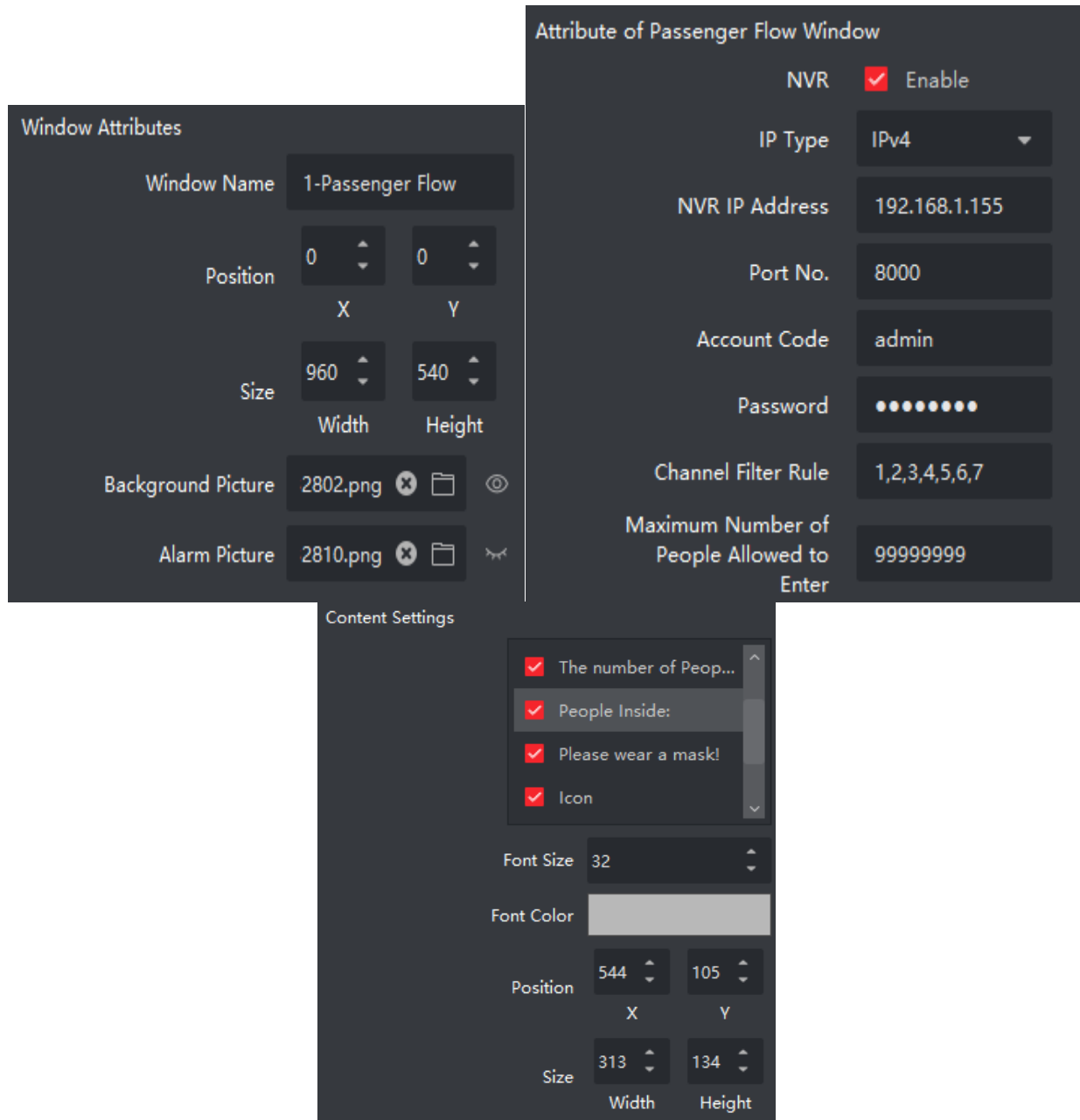
You can change the size and background picture of the windows.

NOTE: We don't recommend that you change the size of the flow control window, it may cause some UI problems.

Enable the NVR function in the attribution interface. Input all the NVR parameters. In the channel filter rule box, you can input the channel ID in the NVR (check the channel ID in the NVR Website). You can separate the ID channels with ",". The channel's maximum number is 256. You can also set the maximum number of people (the maximum number is 99999999).

In content setting, you can change the color and size of the flow control window's UI.

Title:	How to Deploy Hikvision's Flow Control Solution on Digital Signage	Version:	v1.1.0.50	Build:	200527	Date:	5/30/2020	
Product:	Digital Signage and Focsign Lite						Page:	19 of 28

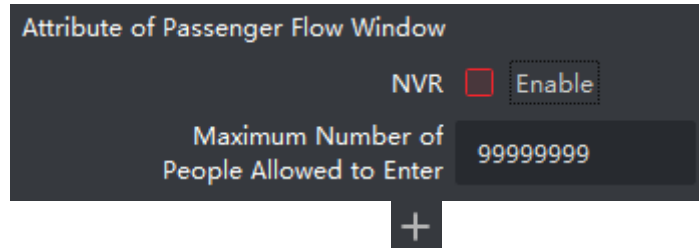


- **Flow Control Window Attributions (Directly Connect to IPC)**

NOTE: The flow control window supports 256 channels in total. These channels can be people counting camera or mask detection camera.

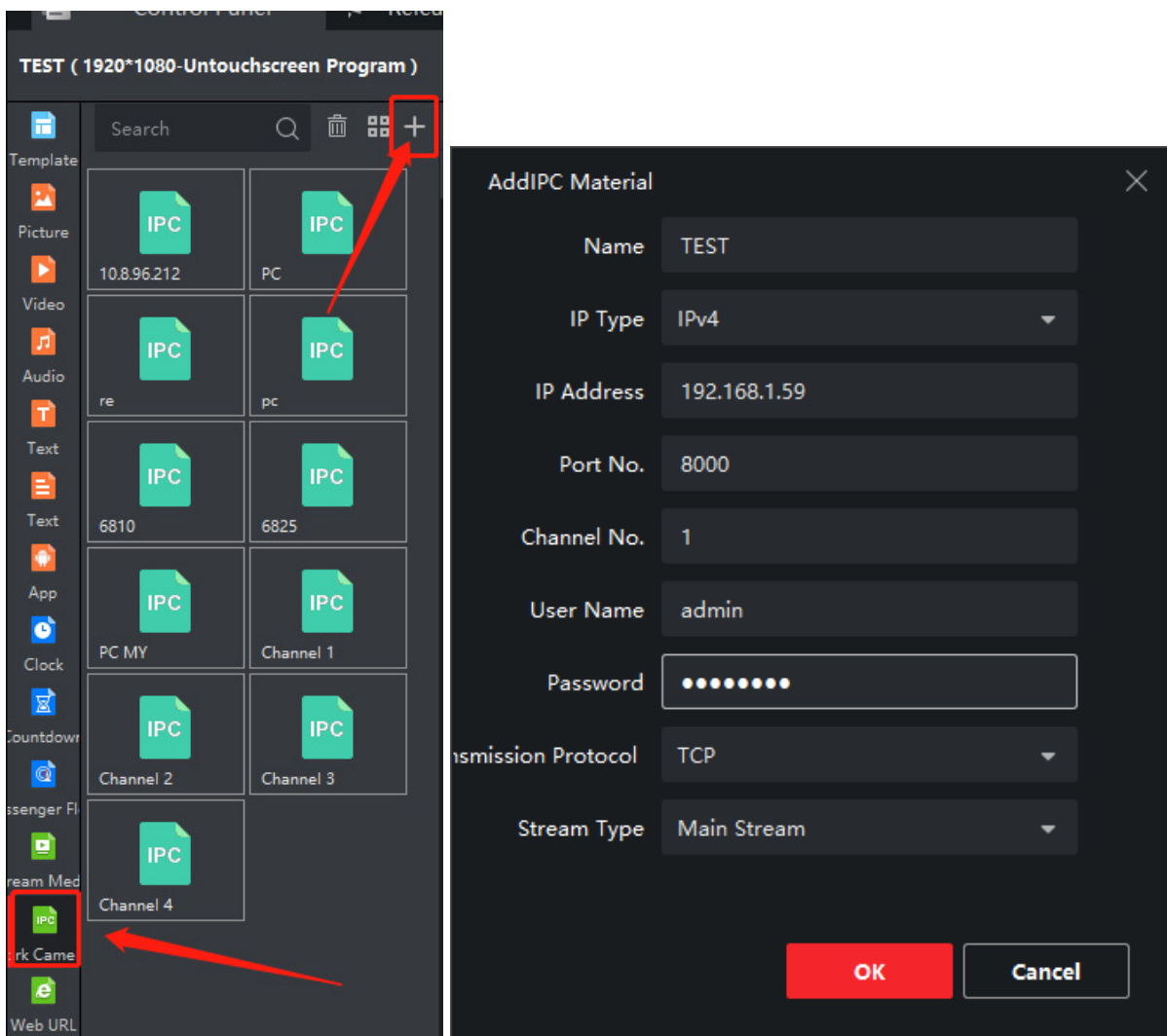
Title:	How to Deploy Hikvision's Flow Control Solution on Digital Signage	Version:	v1.1.0.50	Build:	200527	Date:	5/30/2020	
Product:	Digital Signage and Focsign Lite						Page:	20 of 28

Click the flow control window; you can change its attributions on the right side. Disable the NVR function. The other setting are the same as "Flow Control Window Attributions (with NVR)."



Click the network camera button at the material bar. Click to add the cameras. You can use channel number to choose different IPC channels.

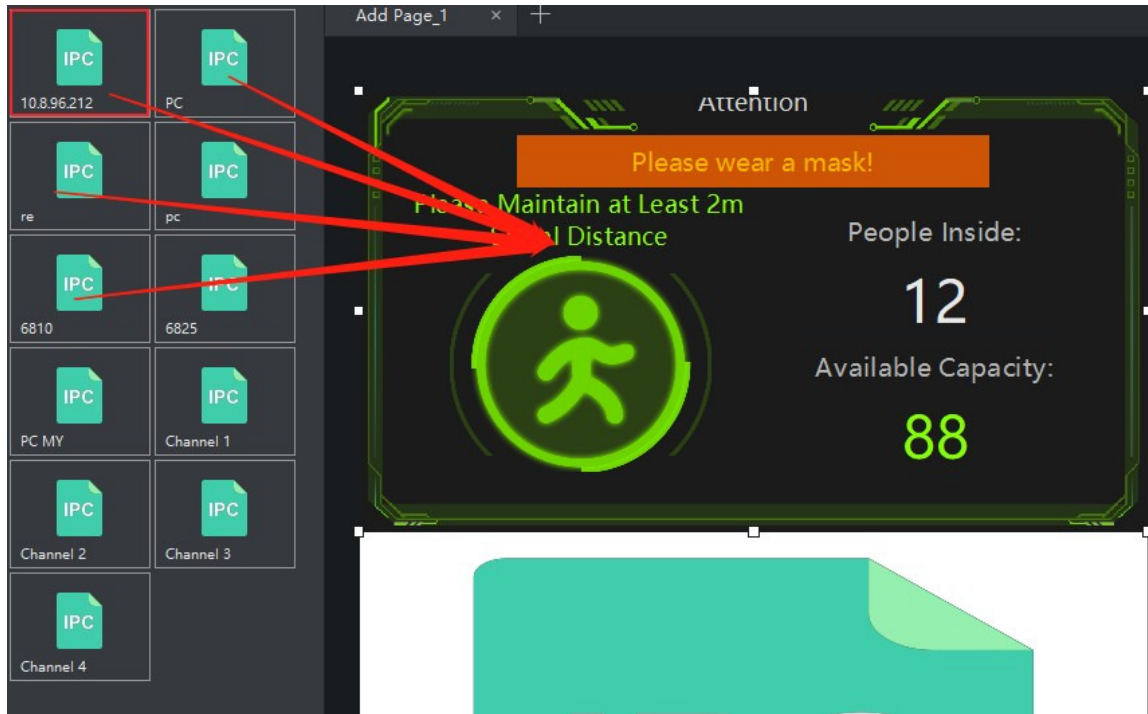
Example: Thermal camera's thermal channel and optical channel.



Title:	How to Deploy Hikvision's Flow Control Solution on Digital Signage	Version:	v1.1.0.50	Build:	200527	Date:	5/30/2020	
Product:	Digital Signage and Focsign Lite						Page:	21 of 28

After adding cameras, drag the camera to the flow control window.

NOTE: Channels 1–4 are the cameras that you added in the remote configuration.



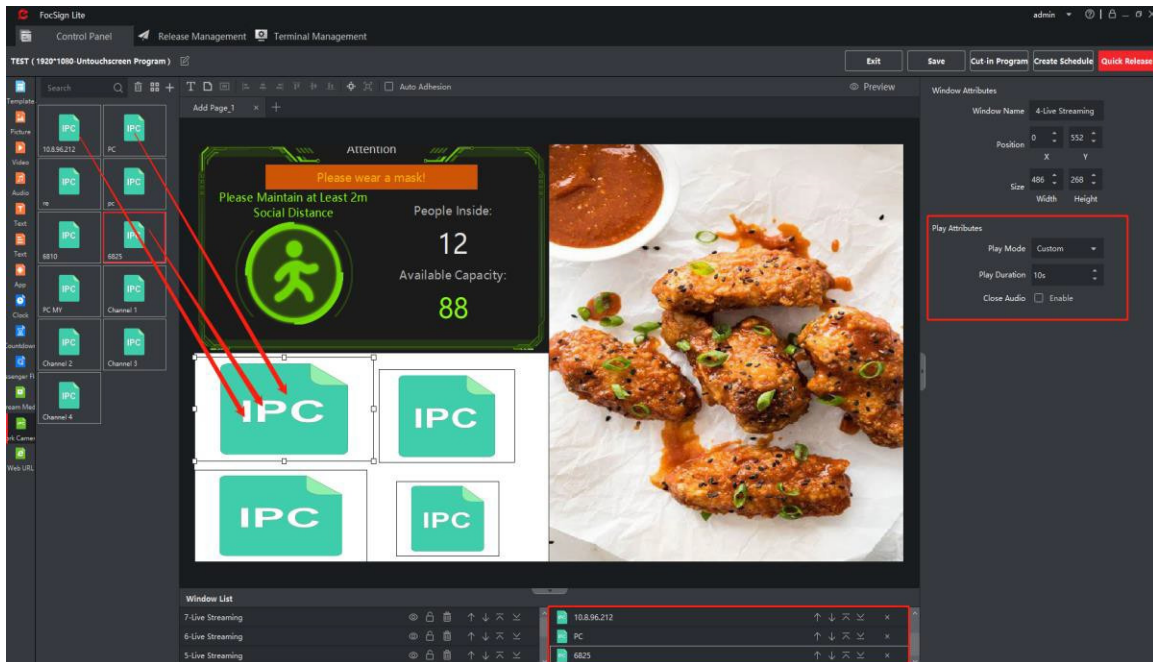
- **Live View of IPC**

NOTE: The device's decoding ability is only four 1080p channels at the same time. If you add video material to the program, it will also use the decoding resource.

Drag the IPC to the program. Each page can have only four IPC windows at once. You can change the size of the windows. You can drag multiple cameras into the IPC window. You can set the duration for each IPC. They will play in a loop. You can add 32 cameras in the same window.

NOTE: You can't change the size of the window directly after creating the program. You can save the program and re-edit it, then change the size of the windows.

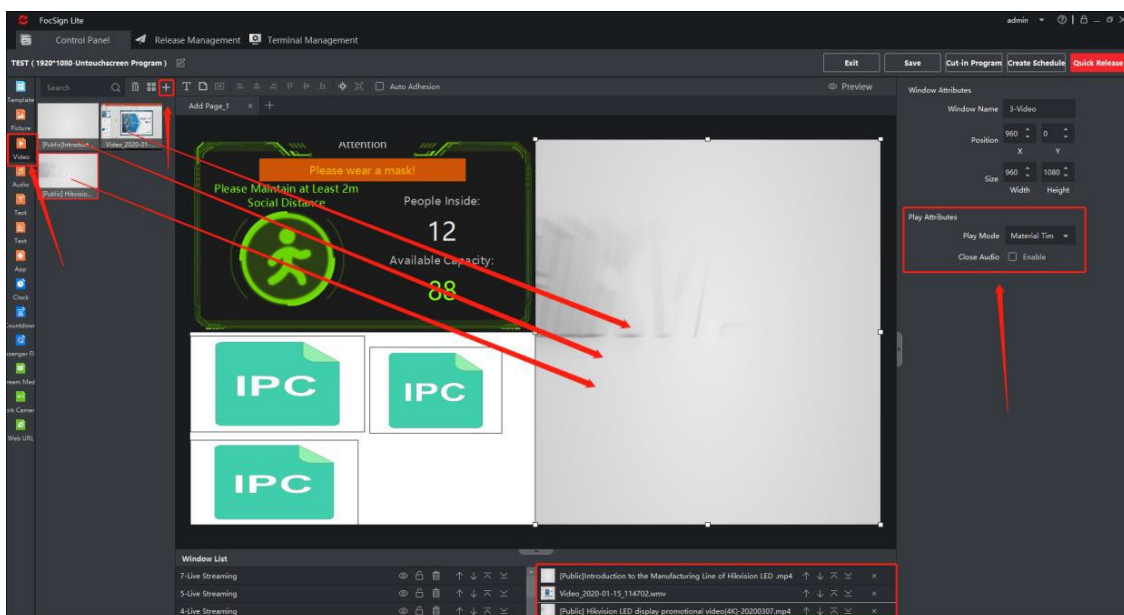
Title:	How to Deploy Hikvision's Flow Control Solution on Digital Signage	Version:	v1.1.0.50	Build:	200527	Date:	5/30/2020	
Product:	Digital Signage and Focsign Lite						Page:	22 of 28



- Other Material Attributes**

Every window can add only the same material type. For example, you can't drag a video and a picture into the same window. The maximum number of video windows (including the IPC window) is four.

Example: Click the video on the material bar. Click **+** to import the video material. Drag the video into the program. You can drag multiple videos to the same window (maximum 32). You can choose the video at the right bottom and set its attribution at the right side.

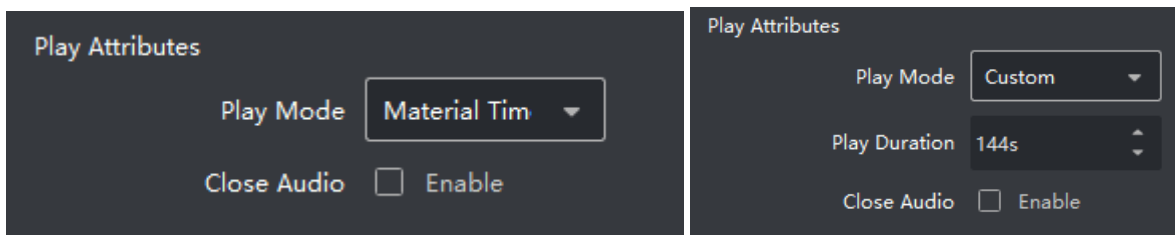


Title:	How to Deploy Hikvision's Flow Control Solution on Digital Signage	Version:	v1.1.0.50	Build:	200527	Date:	5/30/2020	
Product:	Digital Signage and Focsign Lite						Page:	23 of 28

There are two play modes for materials. You can also enable the video's audio.

NOTE: You can enable only one audio resource in the same page.

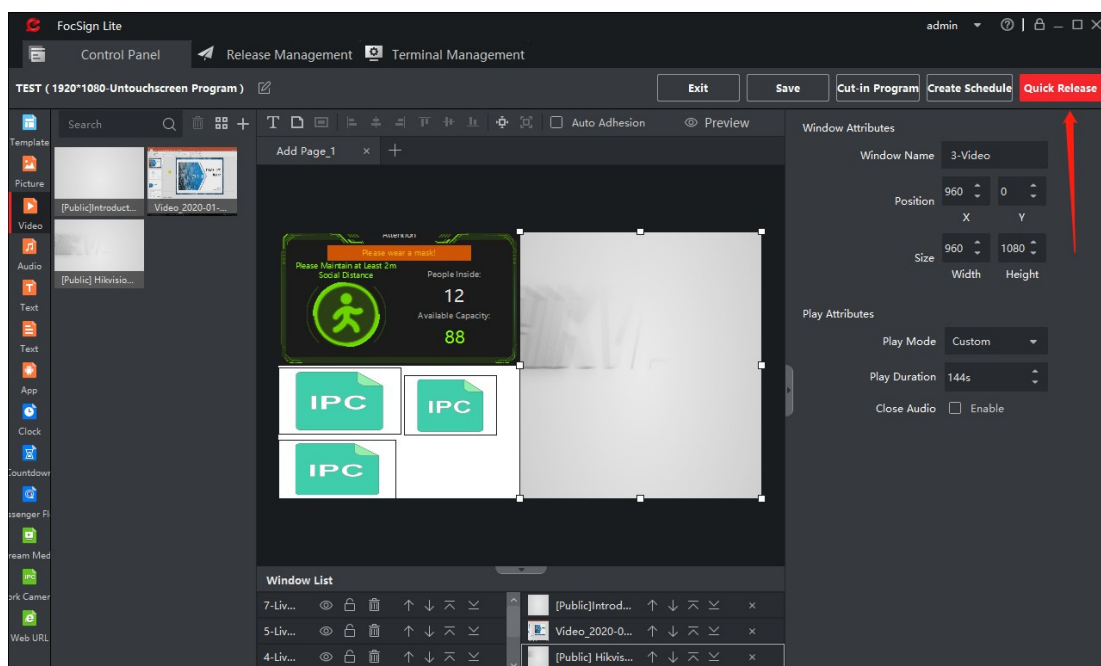
- **Material Time:** Set the play time to the video's original time. After that time, it will turn to the next video. If there is only one video in the windows, it will replay.
- **Custom:** You can customize the play time. After that time, it will turn to the next video. If there is only one video in the windows, it will replay.
- The page play mode takes precedence over the material play mode.



Program Release

- **Quick Release**

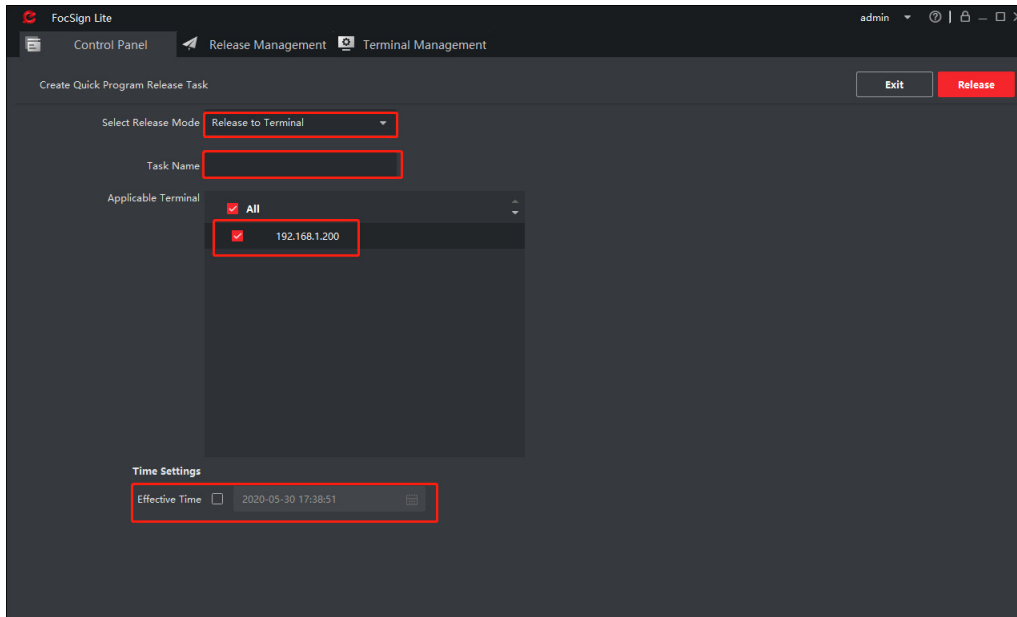
After creation of the program, click the quick release button to release the program.



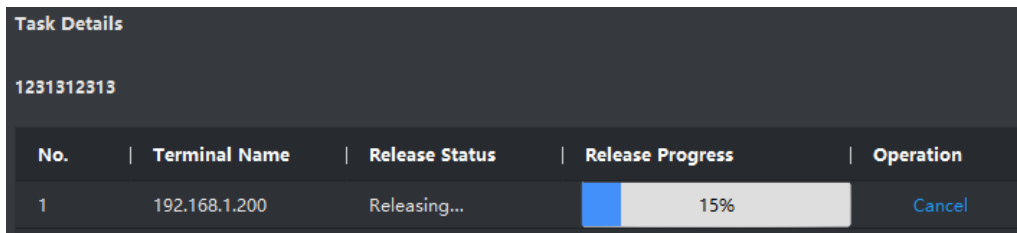
Title:	How to Deploy Hikvision's Flow Control Solution on Digital Signage	Version:	v1.1.0.50	Build:	200527	Date:	5/30/2020
Product:	Digital Signage and Focsign Lite					Page:	24 of 28

There are two release modes: **Release to Terminal** and **Release to USB Disk**.

- **Release to Terminal:** Input the task name and choose the terminal. You can set the effective time. If you don't enable effective time, it will effect immediately.

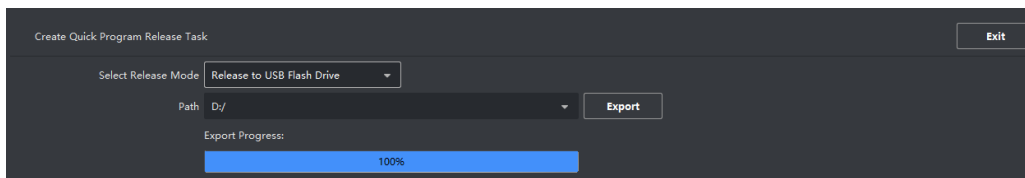


Click release button to start the release process.




After the release process, the program will show on screen.

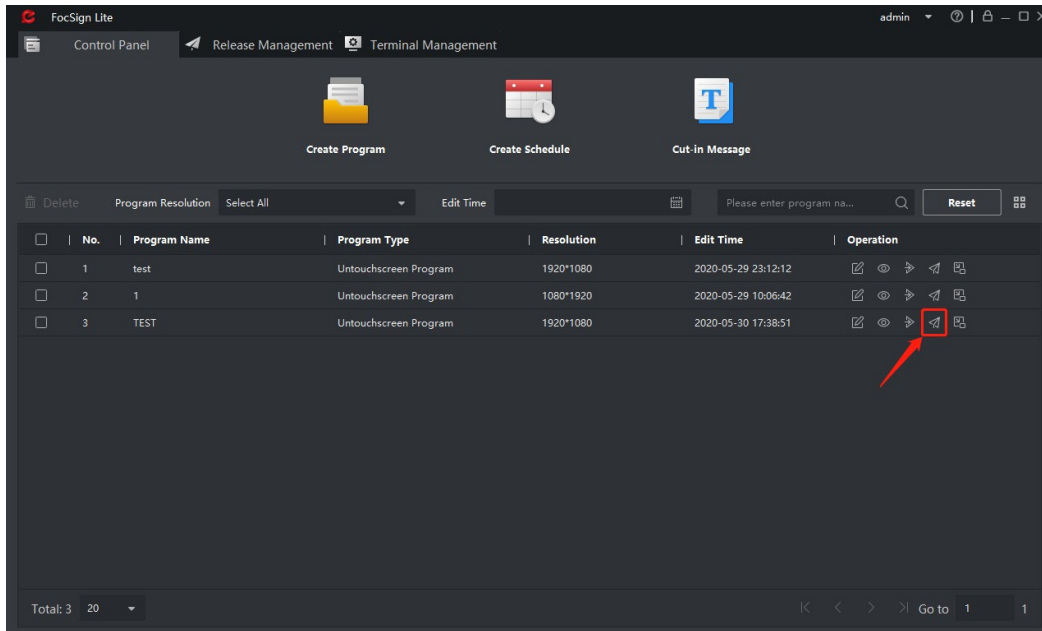
- **Release to USB Flash Disk:** Choose the path for the program. Click export button to export the program to the USB disk. After that, you can insert the USB disk to the terminal. The program will automatically play in the terminal. (You can't pull the disk when the program is playing.)



Title:	How to Deploy Hikvision's Flow Control Solution on Digital Signage	Version:	v1.1.0.50	Build:	200527	Date:	5/30/2020	
Product:	Digital Signage and Focsign Lite						Page:	25 of 28

- **Normal Release**

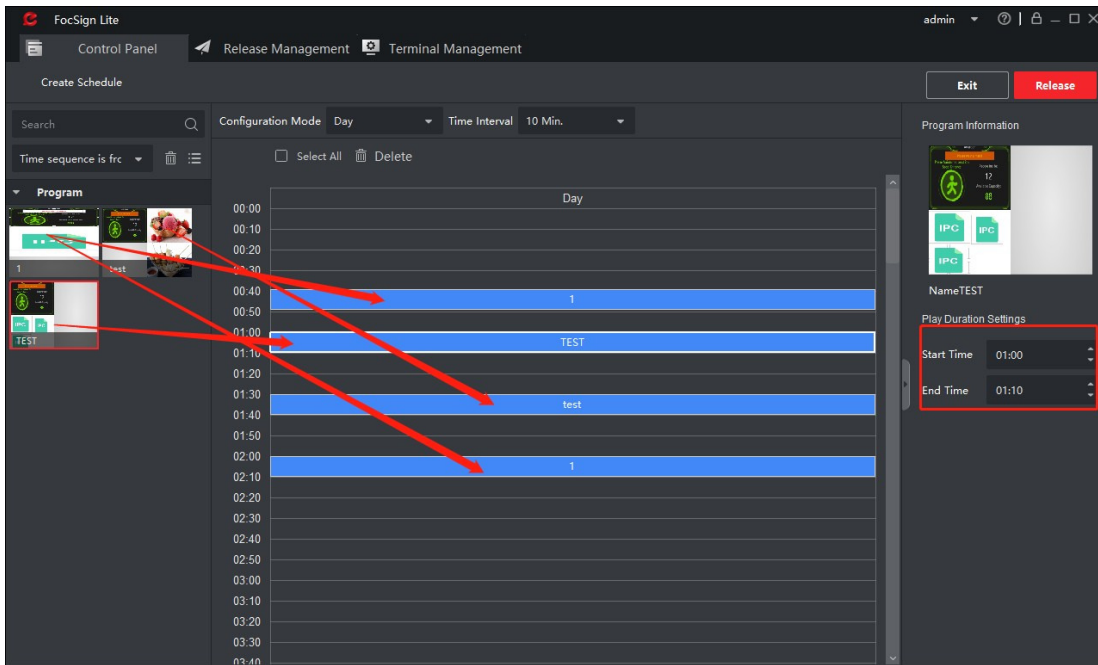
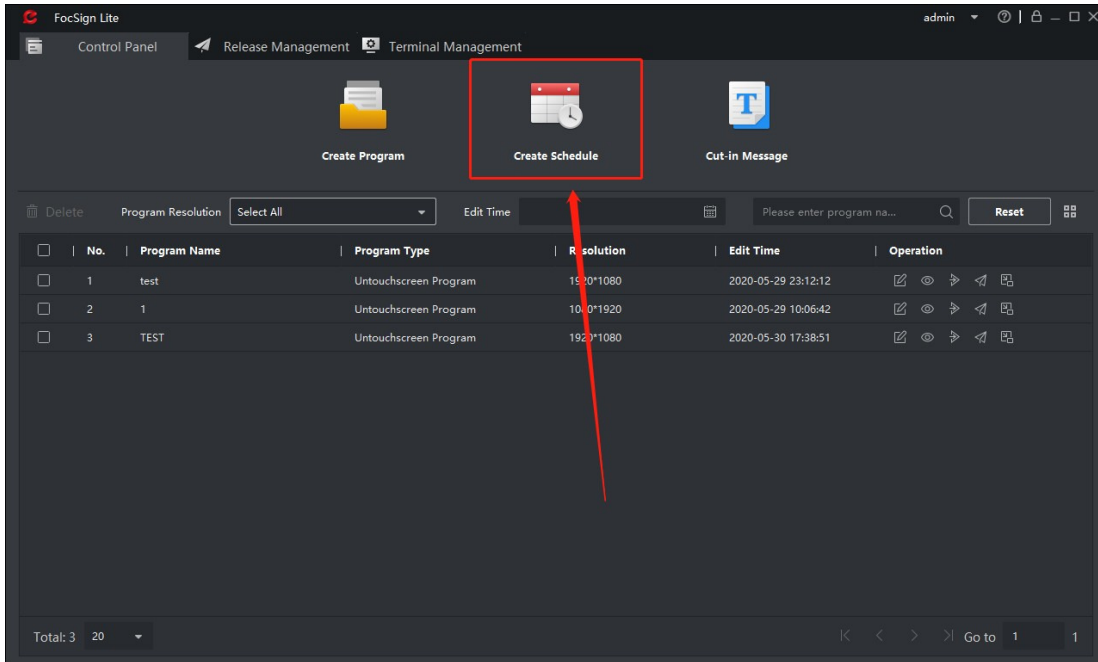
In the control panel, click  at right side to release the program. You can also edit the program and cut-in the program.



- **Schedule Release**

Choose "Create Schedule" at the control panel. Drag the programs into the schedule; you can set the schedule by daily/weekly/custom/loop. You can set the start time and end time for each program. Click release to release the schedule. It will also release the program to the terminal. You can also release the schedule to USB disk.

Title:	How to Deploy Hikvision's Flow Control Solution on Digital Signage	Version:	v1.1.0.50	Build:	200527	Date:	5/30/2020
Product:	Digital Signage and Focsign Lite					Page:	26 of 28

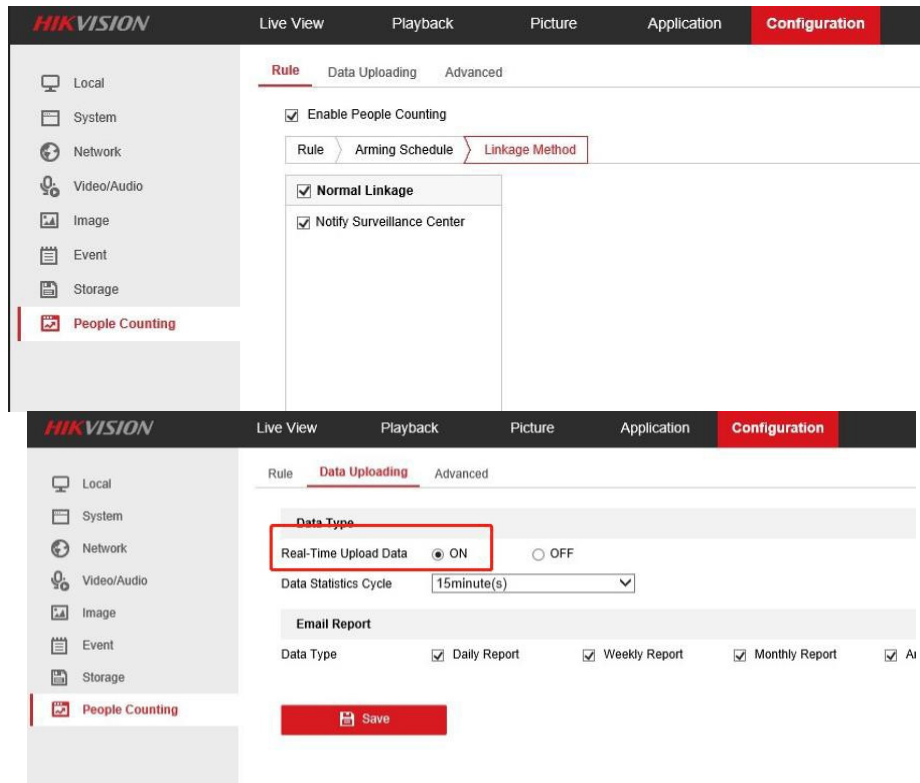


Camera and NVR Setting

- People Counting Camera

Enable the "Notify Surveillance Center" and "Real-Time Upload Data" linkage.

Title:	How to Deploy Hikvision's Flow Control Solution on Digital Signage	Version:	v1.1.0.50	Build:	200527	Date:	5/30/2020	
Product:	Digital Signage and Focsign Lite						Page:	27 of 28



- **Mask Camera**

Enable the "Notify Surveillance Center" and "No Mask Alarm" linkage.

1. **NVR**

NVR needs to enable the "Notify Surveillance Center" and "No Mask Alarm" linkage. The people counting data will transparently transmit to the terminal. The NVR needs to be upgraded to the 3 in 1 version.



Title:	How to Deploy Hikvision's Flow Control Solution on Digital Signage	Version:	v1.1.0.50	Build:	200527	Date:	5/30/2020
Product:	Digital Signage and Focsign Lite					Page:	28 of 28

First Choice for Security
Professionals
HIKVISION Technical Support