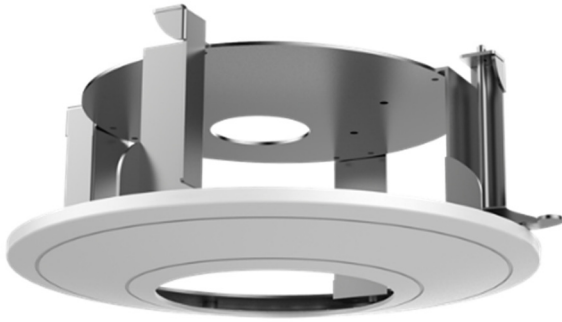


RCM-5 In-Ceiling Mount



The mount should be installed on a flat ceiling. The ceiling must be capable of supporting a minimum of three times the total weight of the camera and the mount. The maximum load capacity of the mount is 6.6 lb (3 kg).

Available Model:
RCM-5

- Steel and Plastic with Surface Spray Treatment
- In-Ceiling Mount Saves Installation Space

Specifications

RCM-5	
Description	In-ceiling mount
Appearance	Hikvision white
Material	Steel and plastic
Dimension	8.86" × 3.87" (Ø225 mm × 98.2 mm)
Weight	1.54 lb (700 g)

Dimensions

