

DS-A80624S

Hybrid Storage Area Network



- Modular Design
 - 64-Bit Multi-Core Processor
 - 4 to 32 GB High-Speed Cache
 - SAS 2.0 and PC0-E2.0 High-Speed Transmission Channel
 - 4 10M/100M/1000M Network Interfaces
 - Redundant Design for Key Modules
 - 4U Chassis Model Supports 24 HDDs
 - Detection Before Operation
 - Detection in Operation
 - Fault Repair
 - RAID 0, 1, 3, 5, 6, 10, 50 and VRAID
 - Global and Local Hot Spare
 - Quick RAID Building
 - Synchronous Backup of Key Information in System Disk and HDD
 - RAID-Based Tamper-Proof Data Technology
 - Auto Data Synchronization Between Devices
 - CPU Load Balance
 - Auto Fan Tuning
 - One-Touch Configuration
 - Various Alarm Management
 - SADP Protocol Supported
 - SNMP Supported
 - Space Pre-Allocation Strategy
- Direct Storage for Video Stream and Picture Stream
 - Supports Direct IP Camera/DVR/NVR Streaming
 - Supports H.264, H.264+, H.265, H.265+
 - Supports Camera Access through RTSP, ONVIF, and PSIA Protocols
 - Supports Alarmed/Scheduled/Manual Recording
 - N+1 Technology
 - Automatic Network Replenishment (ANR), Timely Uploading, and Video Loss Alarm
 - Key Video Locking
 - VRAID Data Protection
 - Supports Direct Streaming and IPSAN Modes
 - Search, Play and Download Videos by Video Type and Time

The DS-A80624S is a Hybrid SAN (Storage Area Network) that is equipped with a single-controller structure. The Hybrid SAN product creates a network that accesses data storage servers, integrates Hikvision's unique direct video streaming technology, and also supports IPSAN.

This flexible, cost-effective solution features ONVIF-support to third-party cameras, support for RTSP and SIP protocols, and extended data retention.

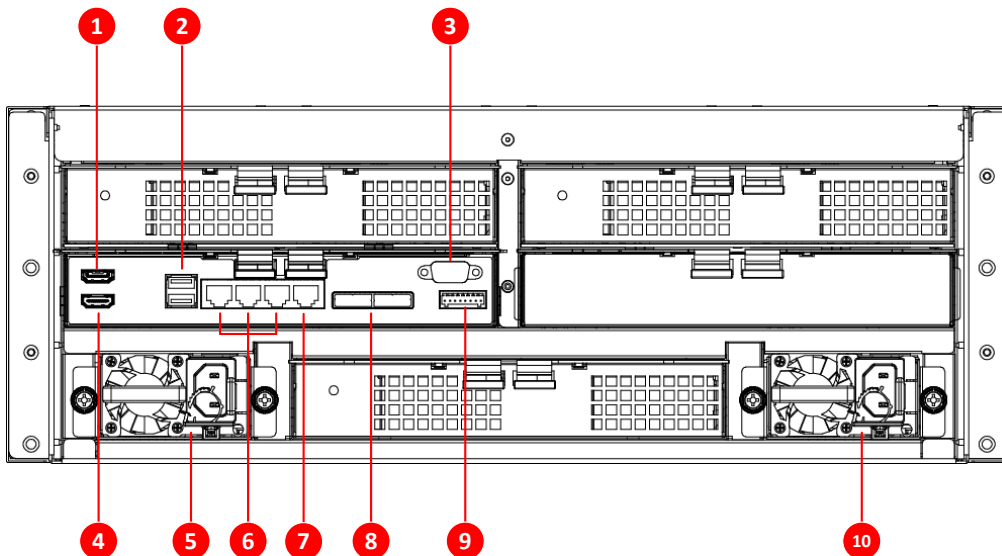
Hikvision's Hybrid SAN systems do not require a recording server, which makes it a truly simple, flexible, and budget-friendly application.

Available models: DS-A80624S

Specifications

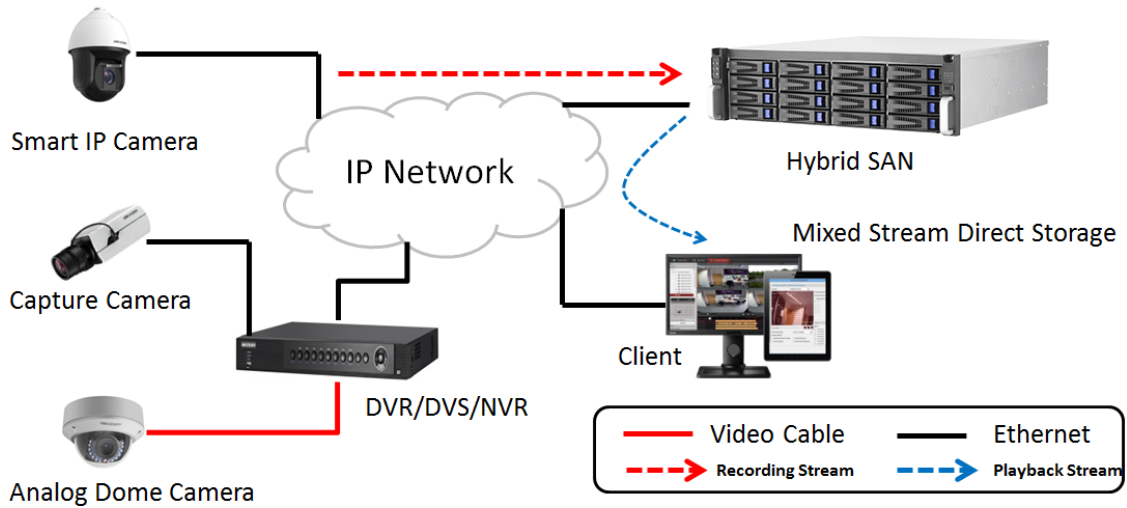
DS-A80624S	
Performance	
Direct Streaming Mode: Video (2 Mbps) + Picture	320-ch (recording + playback)
IPSAN	180-ch (recording + playback)
Controller	
Processor	One controller (64-bit multi-core processor)
Cache per Controller	4 GB (extendable to 32 GB)
HDD	
HDD Slot	24
Interface and Capacity	SATA/Up to 12 TB
Hot-Swapping	Supported
HDD Support	Single, RAID (Enterprise hard disk)
RAID	RAID 0, 1, 3, 5, 6, 10, 50, VRAID, JBOD, Hot-spare
Network	
Protocol	iSCSI, RTSP, ONVIF, PSIA
Storage Management	
Disk Management	Disk inspection, alarm and repair
Logical Volume Management	iSCSI volume, video volume management
Recording Management	
Recording Mode	Timing recording, manual recording, dual-stream recording, alarm recording
Video Protection	Lock key video, N+1 service protection, ANR, video loss detection and alarm
Searching Mode	Search by time and event
Downloading Mode	Quick download, batch download, download by segment, download by merging
Device Maintenance	
Management Mode	Web-based GUI, serial port CLI, centralized management of multiple devices
Alarm Mode	Sound, light, email, message, web page
Log Downloading	Download without web page
Interfaces	
Data Network Interface	3, 1000 Mbps Ethernet interface
Management Network Interface	1, 100 Mbps Ethernet interface
MiniSAS Interface	Supported
COM	1
USB 3.0	2
Alarm Interface	1
HDMI	2
General	
Power Supply	Redundant
Consumption (with HDDs)	<ul style="list-style-type: none"> Working: ≤430 W (1466 BTU with 24 HDDs) Rated: ≤8000 W
Environment Temperature	<ul style="list-style-type: none"> Working: 41° to 104° F (5° C to 40° C) Storage: -104° to 131° F (-40° C to 55° C)
Environment Humidity	<ul style="list-style-type: none"> Working: 20 to 80% RH (non-condensing/frozen) Storage: 5 to 90% RH (non-condensing/frozen)
Chassis	19" 4U
Dimensions (W x D x H)	17.6" x 6.8" x 21.7" (447 x 172 x 550 mm)
Weight (without HDDs)	≤ 73.6 lbs (33.5 kg)

Physical Interfaces



1. HDMI Interface 1	6. Data Network Interfaces
2. USB Interface	7. Management Network Interfaces
3. RS-232 Interface	8. SAS Interface
4. HDMI Interface 2	9. Alarm Interface
5. Power Module 1	10. Power Module 2

Typical Application



Hikvision Tested and Recommended HDDs

HDD Model	Capacity (TB)	HDD Model	Capacity (TB)
ST12000NM0008	12	ST1000NM0055	1
ST10000NM0478	10	WD101KRYZ-01	10
ST10000NM0086	10	WD101KRYZ-31	10
ST10000NM0016	10	WD8003FRYZ-31	8
ST8000NM0055	8	WD8003FRYZ-01	8
ST8000NM0016	8	WD6002FRYZ-31	6
ST6000NM0024	6	WD4002FYYZ-31	4
ST4000NM0024	4	WD2005FBYZ	2
ST2000NM0024	2	WD6002FRYZ	6
ST6000NM0115	6	WD4002FYYZ	4
ST4000NM0115	4	HUS726T4TALA6L4	4
ST2000NM0125	2	HUS726T6TALE6L4	6
ST4000NM0035	4	HKS728T8TALE-31	8
ST3000NM0005	3	HUS728T8TALE6L4	8
ST2000NM0055	2	HUH721212ALE-31	12