

EKI-K82B86

4K Value Express Kit

ECI-B28F2 Cameras

- 1/2.5" Progressive Scan CMOS
- 3840 x 2160 Resolution
- 2.8 mm Fixed Lens
- Color: 0.01 lux @ (f/1.2, AGC On), 0.028 lux @ (f/2.0, AGC On), 0 lux with IR
- H.265+, H.265, H.264+, H.264
- 2 Behavior Analyses
- DWDR
- BLC/3D DNR/ROI/HLC
- IP67
- MicroSD/SDHC/SDXC card slot, up to 128 GB

NVR

- Up to 8 MP Resolution Recording
- H.265+/H.265/H.264+/H.264/MPEG
- Plug-and-Play with up to 8 PoE Cameras
- Up to 2 SATA Interfaces

Hikvision's EKI-K82B86 4K Value Express Kit is a cost-effective solution for value-oriented users.

Each kit is supplied with six network cameras with 8 MP image sensors and an 8-channel NVR in the same box.

Kits are plug-n-play and can be set up quickly.

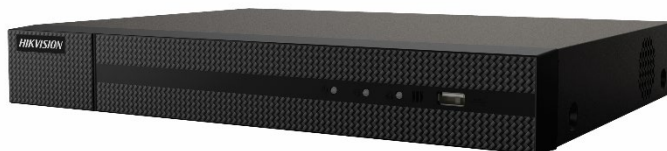
Available models:

EKI-K82B86

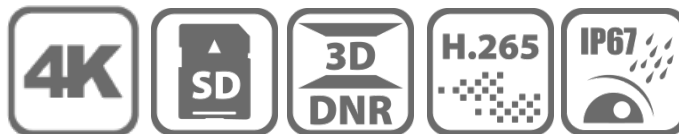
(1) ERI-K108-P8 NVR + (6) ECI-B28F2 Cameras



(6) 8 MP Cameras



(1) 8 PoE Port NVR



Specifications

EKI-K82B86	
CI-B28F2 Camera	
Image Sensor	1/2.5" progressive scan CMOS
Minimum Illumination	Color: 0.01 lux @ (f/1.2, AGC on), 0.028 lux @ (f/2.0, AGC on), 0 lux with IR
Shutter Speed	1/3 s to 1/100,000 s
Slow Shutter	Yes
Day/Night	IR cut filter
Digital Noise Reduction	3D DNR
WDR	DWDR
3-Axis Adjustment	Pan: 0° to 360°, tilt: 0° to 90°, rotate: 0° to 360°
Lens	
Focal Length	2.8 mm
Aperture	f/2.0
Focus	Fixed
FOV	Horizontal FOV: 102°, vertical FOV: 53°, diagonal FOV: 124°
Lens Mount	M12
IR	
IR Range	Up to 98 ft (30 m)
Wavelength	850 nm
Compression Standard	
Video Compression	Main stream: H.265/H.264 Sub-stream: H.265/H.264/MJPEG
H.264 Type	Main Profile/High Profile
H.264+	Main stream supports
H.265 Type	Main Profile
H.265+	Main stream supports
Video Bit Rate	32 Kbps to 16 Mbps
Smart Features	
Basic Event	Motion detection, video tampering alarm, exception (network disconnected, IP address conflict, illegal login, HDD full, HDD error)
Linkage Method	Trigger recording: memory card, network storage, pre-record and post-record Trigger captured pictures uploading: FTP, HTTP, NAS, E-mail Trigger notification: HTTP, ISAPI, E-mail
Region of Interest	Supports 1 fixed region for main stream and sub-stream
Image	
Maximum Resolution	3840 × 2160
Main Stream	60 Hz: 15 fps (3840 × 2160), 20 fps (3072 × 1728), 30 fps (2560 × 1440, 1920 × 1080, 1280 × 720)
Sub-Stream	60 Hz: 30 fps (640 × 480, 640 × 360, 320 × 240)
Third Stream	60 Hz: 30 dfps (1280 × 720, 640 × 360, 352 × 240)
Image Enhancement	BLC/3D DNR/HLC
Image Settings	Saturation, brightness, contrast, sharpness, AGC, and white balance adjustable by client software or Web browser
Target Cropping	No
Day/Night Switch	Day/Night/Auto/Schedule
*NOTE: When the main stream resolution is 3840 × 2160, maximum frame rate is 15 fps (60 Hz) for all streams. When the main stream resolution is 3072 × 1728, maximum frame rate is 20 fps for all streams.	
Network	
Network Storage	Supports microSD/SDHC/SDXC card (128 GB), local storage, and NAS (NFS, SMB/CIFS), ANR
Protocols	TCP/IP, UDP, ICMP, HTTP, HTTPS, FTP, DHCP, DNS, DDNS, RTP, RTSP, RTCP, PPPoE, NTP, UPnP, SMTP, SNMP, IGMP, 802.1x, QoS, IPv6, UDP, Bonjour, SSL/TLS
General Function	Anti-flicker, three streams, heartbeat, mirror, privacy masks, password reset via e-mail, pixel counter, HTTP listening
Security	Password protection, complicated password, HTTPS encryption, 802.1x authentication (EAP-TLS 1.2, EAP-LEAP, EAP-MD5), watermark, IP address filter, basic and digest authentication for HTTP/HTTPS, WSSE and digest authentication for ONVIF, TLS1.2
API	ONVIF (PROFILE S, PROFILE G, PROFILE T), ISAPI, SDK
Simultaneous Live View	Up to 6 channels
User/Host	Up to 32 users 3 levels: administrator, operator, and user
Client	iVMS-4200, Hik-Connect, Hik-Central
Web Browser	Plug-in required live view: IE8+ Plug-in free live view: Chrome 57.0+, Firefox 52.0+, Safari 11+ Local Service: Chrome 41.0+, Firefox 30.0+

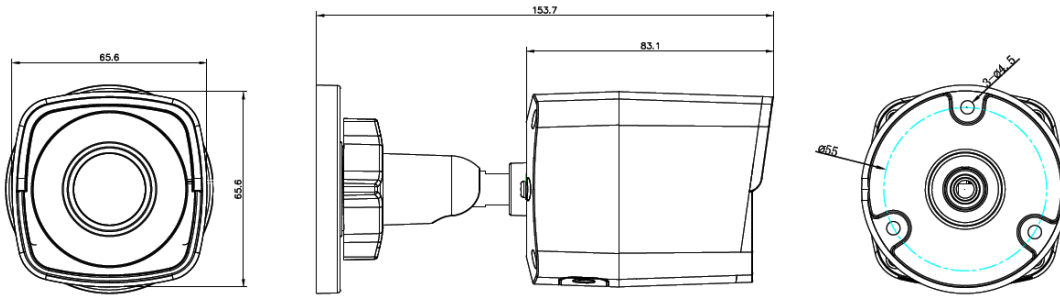
Specifications (continued)

EKI-K82B86	
Interface	
Video Output	No
Communication Interface	1 RJ-45 10M/100M self-adaptive Ethernet port
On-board Storage	Built-in microSD/SDHC/SDXC slot, up to 128 GB
SVC	H.264 and H.265 encoding support
Reset Button	Yes
General	
Operating Conditions	-30° to +60° C (-22° to +140° F), humidity 95% or less (non-condensing)
Web Client Language	32 languages: English, Russian, Estonian, Bulgarian, Hungarian, Greek, German, Italian, Czech, Slovak, French, Polish, Dutch, Portuguese, Spanish, Romanian, Danish, Swedish, Norwegian, Finnish, Croatian, Slovenian, Serbian, Turkish, Korean, Traditional Chinese, Thai, Vietnamese, Japanese, Latvian, Lithuanian, Portuguese (Brazil)
Power Supply	12 VDC ±25%, Ø5.5 mm coaxial power plug PoE (802.3af, class 3)
Power Consumption and Current	12 VDC, 0.5 A, maximum 6 W PoE: (802.3af, 36 V to 57 V), 0.2 A to 0.1 A, maximum 7.5 W
Protection Level	IP67
Material	Metal
Dimensions	Camera: Ø65.6 mm × 153.7 mm (Ø2.58" × 6.05") Package: 216 mm × 121 mm × 118 mm (8.5" × 4.8" × 4.7")
Weight	Camera: Approximately 410 g (0.9 lb)

ERI-K108-P8 NVR	
NVR Model	ERI-K108-P8
Video/Audio Input	
IP Video Input	8-ch, up to 8 MP resolution
Two-Way Audio	1-ch, RCA (2.0 Vp-p, 1k Ω)
Network	
Incoming Bandwidth	80 Mbps
Outgoing Bandwidth	80 Mbps
Video/Audio Output	
Recording Resolution	8 MP/6 MP/5 MP/4 MP/3 MP/1080p/UXGA/720p/VGA/4CIF/DCIF/2CIF/CIF/QCIF
HDMI Output Resolution	1-ch, 1920 × 1080p, 1600 × 1200, 1280 × 1024, 1280 × 720, 1024 × 768
VGA Output Resolution	1-ch, 1920 × 1080p, 1600 × 1200, 1280 × 1024, 1280 × 720, 1024 × 768
Audio Output	1-ch, RCA (linear, 1k Ω)
Decoding	
Decoding Format	H.265/H.265+/H.264/H.264+/MPEG4
Live View/Playback Resolution	8 MP/6 MP/5 MP/4 MP/3 MP/1080p/UXGA/720p/VGA/4CIF/DCIF/2CIF/CIF/QCIF
Synchronous Playback	8-ch
Capability	1-ch @ 8 MP/4-ch @ 1080p
Network Management	
Network Protocols	TCP/IP, DHCP, Hik-Connect, DNS, DDNS, NTP, SADP, SMTP, NFS, iSCSI, UPnP™, HTTPS
Hard Disk	
SATA	1 SATA interface
Drive Bays	1
Capacity for Each Disk	Up to 6 TB
External Interface	
Network Interface	1, RJ-45 10/100/1000 Mbps self-adaptive Ethernet interface
USB Interface	2 x USB 2.0
PoE Interface	
Interface	8, RJ-45 10/100 Mbps self-adaptive Ethernet interface
Power	≤80 W
Standard	IEEE 802.3 af/at
General	
Power Supply	48 VDC
Power	≤180 W
Consumption (w/o Hard Disk)	≤10 W (w/o enabling PoE)
Working Temperature	14 to 131° F (-10 to 55° C)
Working Humidity	10% to 90% (non-condensing)
Chassis	1U chassis
Dimensions (W × D × H)	12.4" × 9.4" × 1.9" (315 mm × 240 mm × 48 mm)
Weight (w/o Hard Disk)	2.2 lb (≤1 kg)

Dimensions

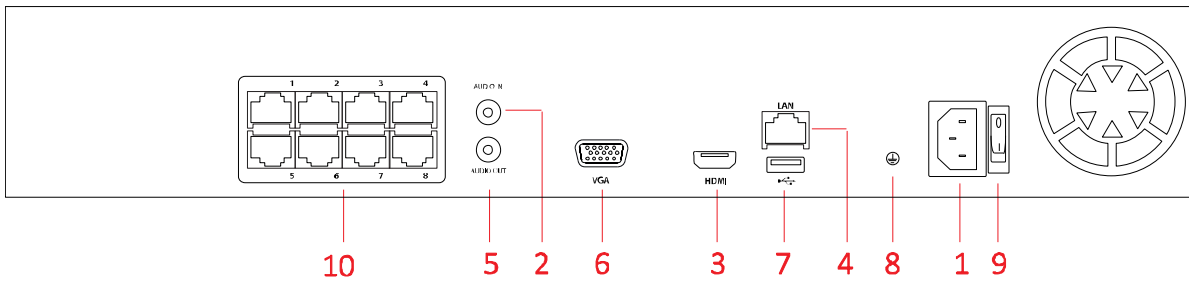
CI-B28F2



Unit: mm (inch)

Interface

ERI-K108-P8 Rear Panel



Index	Description	Index	Description
1	48 VDC Power Supply	6	VGA Interface
2	Audio In	7	USB 2.0 Interface
3	HDMI Interface	8	Ground
4	LAN Interface	9	Power Switch
5	Audio Out	10	LAN Network Interfaces with PoE Function

Accessories

