

HikCentral Professional

Powerful, Flexible & Efficient Central Management System

Model Number Coordination



HikCentral Professional is a comprehensive central management system (CMS) that brings together powerful video surveillance and access control systems of any size. The modern and powerful desktop, web, and mobile clients can access the centralized system from anywhere. This highly efficient platform can be deployed on preloaded servers, third-party servers and virtual machines.

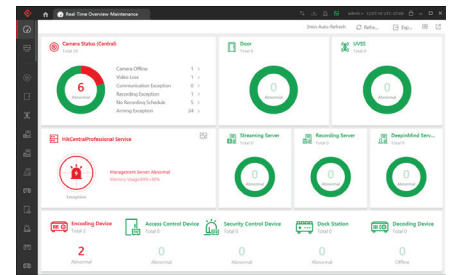
Servers and Licenses

HikCentral Professional is modular, meaning customers purchase only what they need, adding more advanced modules at any time with simple licensing. Licenses are perpetual with one-time purchase. Support and software upgrades are always free. There are numerous licenses to choose from:

Base licenses for video surveillance, access control and/or remote site management are required to use the software for those purposes. Only one base license of each category can be activated per server. **Expansion licenses** allow for more video channels, doors and sites to be added onto base licenses. Add-on **module licenses** enable extra capabilities, and most support all the standard video channels activated on the server, while a few add-ons must be purchased per channel. An individual HikCentral Professional server can utilize all available licenses concurrently except for the standalone Health Monitoring System license and multiple base licenses of the same category.

Health Monitoring System

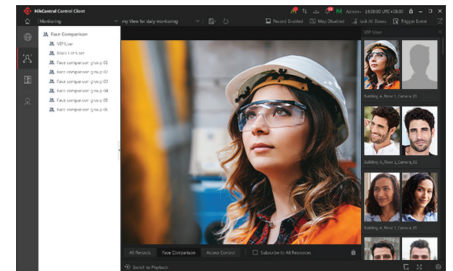
The health monitoring system (HMS) base license provides live and historical data about the status of connected devices, and it can automatically generate and send reports. The HMS base license is to be purchased for standalone use only, because health monitoring is included with the video surveillance and access control system base licenses. Standalone HMS is a solution for service providers looking to generate recurring monthly revenue with their own customer contracts for system health monitoring and maintenance. Standalone HMS licenses cost less per device and do not include any video or alarm modules. The devices can be accessed via web browser from HikCentral to check video if needed. With the standalone version of HMS, you pay a one-time fee for the base license with 16 channels and an additional fee per added video channel. There is no fee for monitoring encoders (including DVRs and NVRs), decoders, streaming servers and remote sites. The standalone HMS does not monitor access control devices.



Category	Description		Model
HMS Base	Software license only	16 Channels	HikCentral-Health Monitoring Base/16Ch
HMS Expansion	Add one channel to an HMS base license.		HikCentral-Health Monitoring-1Ch

Access Control System

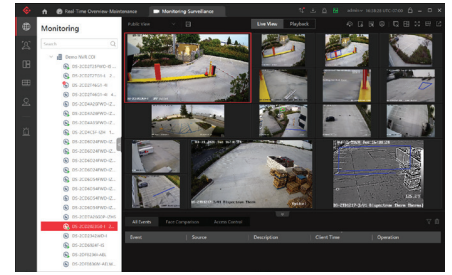
The video surveillance system (VSS) base licenses enable all standard features and health monitoring for a fully functional VSS. The VSS base licenses are available as software-only or bundled with a server. Only one VSS base license can be applied to each server. Expand the VSS base with more channels using the HikCentral-VSS-1Camera license. Each VSS base can manage up to 3,000 channels or up to 10,000 channels on each two-server distributed deployment. A camera with multiple channels requires a license for each channel to be imported. Add additional capabilities, such as license plate recognition management and Business Intelligence to the VSS using add-on module licenses listed below.



Category	Description		Model
ACS Base	Software license only	2 Doors	HikCentral-ACS-Base/2Door
		16 Doors	HikCentral-ACS-Base/16Door
ACS Expansion	Add one door. Orders of multiple add-on doors are provided as one indivisible license key.		HikCentral-ACS-1Door
ACS Module	Attendance module enables all shift management and attendance reporting functionality.		HikCentral-Attendance

Video Surveillance System

The video surveillance system (VSS) base licenses enable all standard features and health monitoring for a fully functional VSS. The VSS base licenses are available as software-only or bundled with a server. Only one VSS base license can be applied to each server. Expand the VSS base with more channels using the HikCentral-VSS-1Camera license. Each VSS base can manage up to 3,000 channels or up to 10,000 channels on each two-server distributed deployment¹. A camera with multiple channels requires a license for each channel to be imported. Add additional capabilities, such as license plate recognition management and Business Intelligence to the VSS using add-on module licenses listed below.

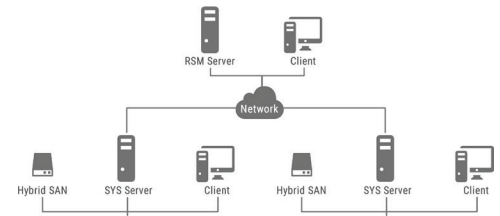


Category	Description		Model
VSS Base	All-In-One Server ¹	64 Channels	HikCentral-VSS-Base/HW/64Ch
		300 Channels	HikCentral-VSS-Base/HW/300Ch
	Software license only	4 Channels	HikCentral-VSS-Base/4Ch
		16 Channels	HikCentral-VSS-Base/16Ch
		64 Channels	HikCentral-VSS-Base/64Ch
		300 Channels	HikCentral-VSS-Base/300Ch
VSS Expansion	Add one video channel to a VSS base license. Orders of multiple channels are provided as one indivisible license key.		HikCentral-VSS-1Camera
VSS Module	Smart wall module for integrated video wall management.		HikCentral-SmartWall-Base
	Automatic number plate recognition (ANPR) module for Hikvision LPR camera integration.		HikCentral-ANPR-Base
	Under-vehicle surveillance system (UVSS) base for management of four (4) Hikvision UVSS.		HikCentral-UVSS-Base
	Facial recognition module for Hikvision facial recognition camera and NVR integration.		HikCentral-FacialReco-Base
	Business Intelligence module enables reporting from people counting, queue analysis and heat mapping cameras.		HikCentral-BI Report-Base
	Thermal report module enables statistical reporting of temperature data from one (1) Hikvision thermal camera per license.		HikCentral-Thermal Report-Base/1Ch
	Dock station module for connecting one body camera dock station per license. All video in connected dock stations can be searched by person's name or group name.		HikCentral-DockStation-1Station

¹ The VSS All-In-One Server offer supports management of up to 3,000 channels independently or 10,000 channels with a two-server distributed deployment. Servers of lesser performance will not support the same number of channels. Two-server distributed deployment requires two servers for each VSS base license, and the system must be irreversibly converted to distributed deployment. Hikvision will provide free conversion to distributed deployment upon request.

Remote Site Manager

The remote site manager (RSM) is used to scale a system beyond one HikCentral Professional server up to 100,000 cameras. The RSM base license enables management of two HikCentral Professional servers in one system, and it is available with or without a server. Expand the RSM base with more servers using the Hikcentral-RSM-1Site license.

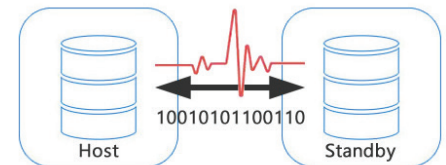


Category	Description		Model
RSM Base	RSM Server with software ²	2 Sites	HikCentral-RSM-Base/HW/E3/2Site
	Software license only	2 Sites	HikCentral-RSM-Base/2Site
RSM Expansion	Add one site. Orders of multiple add-on sites are provided as one indivisible license key.		HikCentral-RSM-1Site

² The RSM Server with software offer supports up to 18,000 channels among the connected HikCentral Professional sites. A higher performance server is required to support more channels up to 100,000.

High Availability Software

High availability software (HAS) facilitates the addition of a redundant standby server for one or more HikCentral Professional host servers to ensure the HikCentral system remains operational even when the host server is down. RoseReplicator Plus is the preferred high availability solution for HikCentral Professional servers where maximal uptime is important.



Category	Description		Model
HAS	RoseReplicator Plus	USB key with 1 year warranty	RoseReplicatorPlus For Windows(USBKEY1)
		USB key with 3 year warranty	RoseReplicatorPlus For Windows(USBKEY3)