

Title:	Adding Arecont 180 degree camera (AV8185DN)				
Date:	04/14/2014	Version:	1.0	Pages	7
Product:	9600 Series and 9016 Series NVRs				
Action Required:	Information only				

Arecont 180 degree (AV8185) cameras have 4 imagers, yet only 1 IP address. The camera outputs 4 independent streams- one stream per imager. This creates a question: "How to add an Arecont 180 degree camera to a HikVision NVR?" Here is how it's done:

Log into the HikVision NVR using your web browser.
From the configurations go to the "Camera Management" (Figure 1)

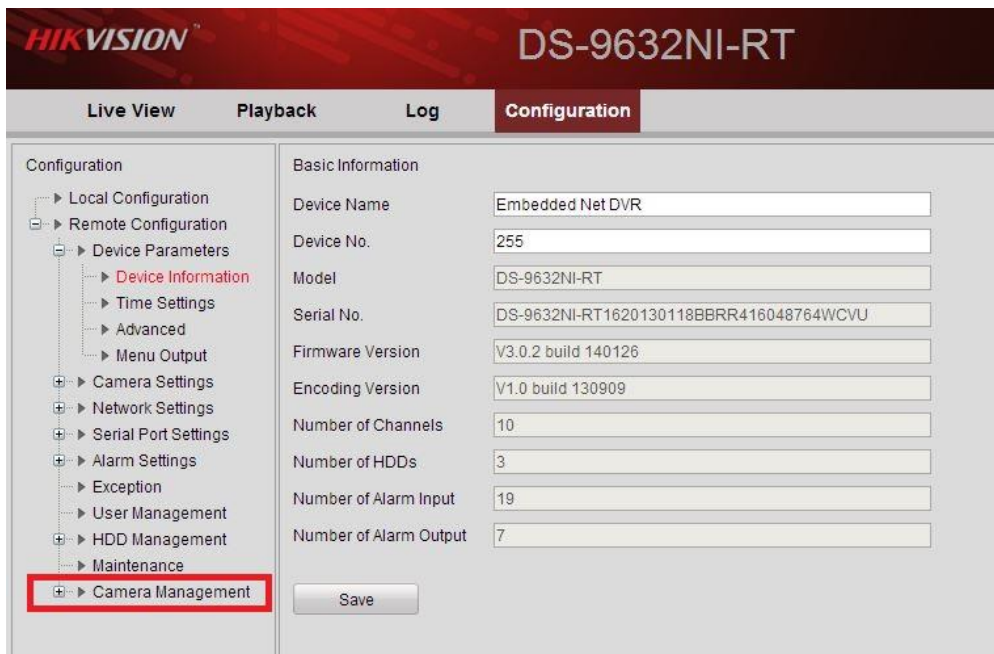


Figure 1

This will populate the list of the cameras currently connected to the NVR -Online or Offline (Figure 2).

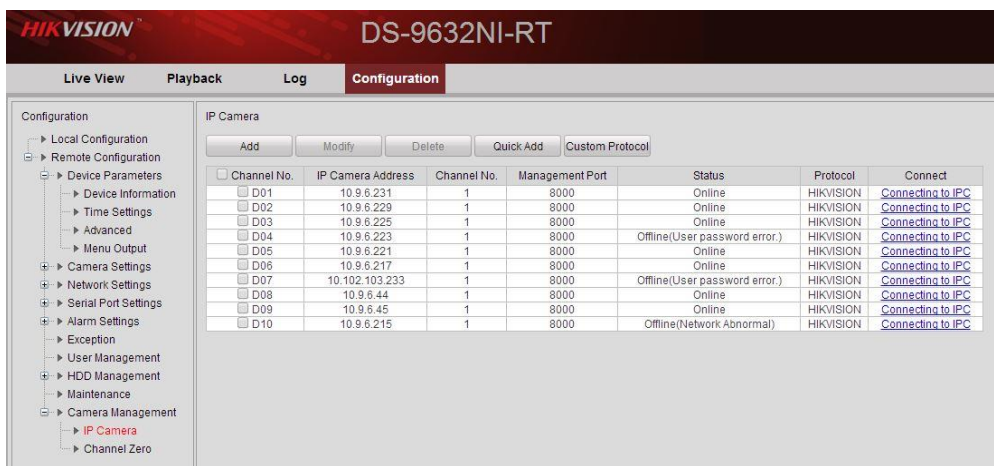


Figure 2

Title:	Adding Arecont 180 degree camera (AV8185DN)				
Date:	04/14/2014	Version:	1.0	Pages	7
Product:	9600 Series and 9016 Series NVRs				
Action Required:	Information only				

Now, we are going to manually add the Arecont camera. Press “ADD” (Figure 3). After pressing “ADD”, enter the camera’s information into the respective fields (Figures 4 and 5).

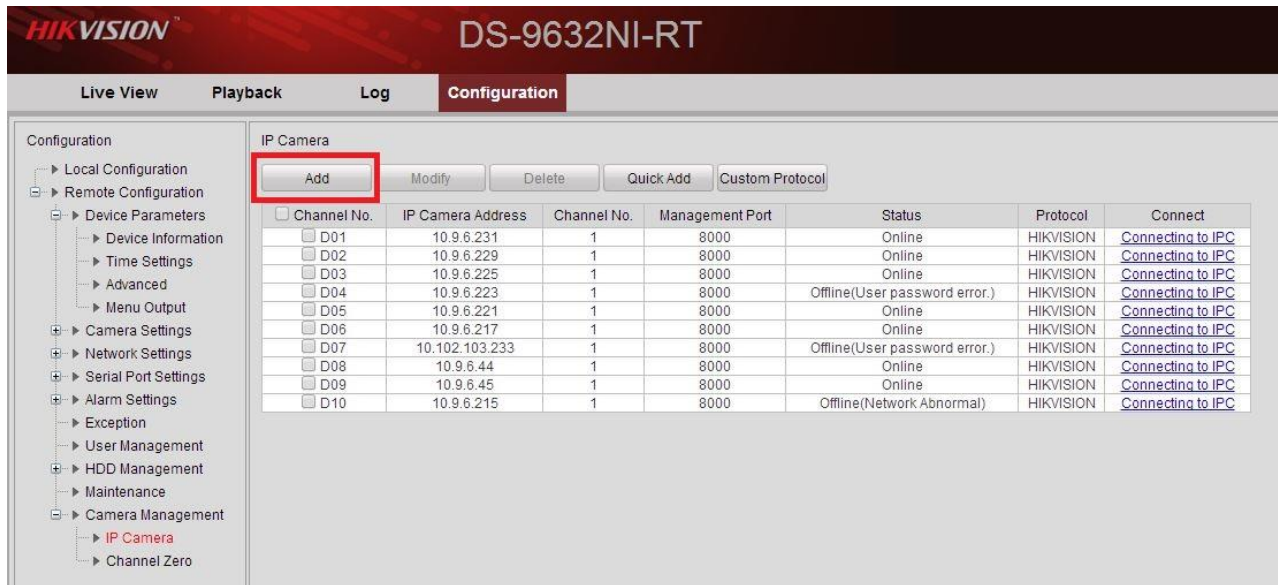


Figure 3



Figure 4

Title:	Adding Arecont 180 degree camera (AV8185DN)				
Date:	04/14/2014	Version:	1.0	Pages	7
Product:	9600 Series and 9016 Series NVRs				
Action Required:	Information only				

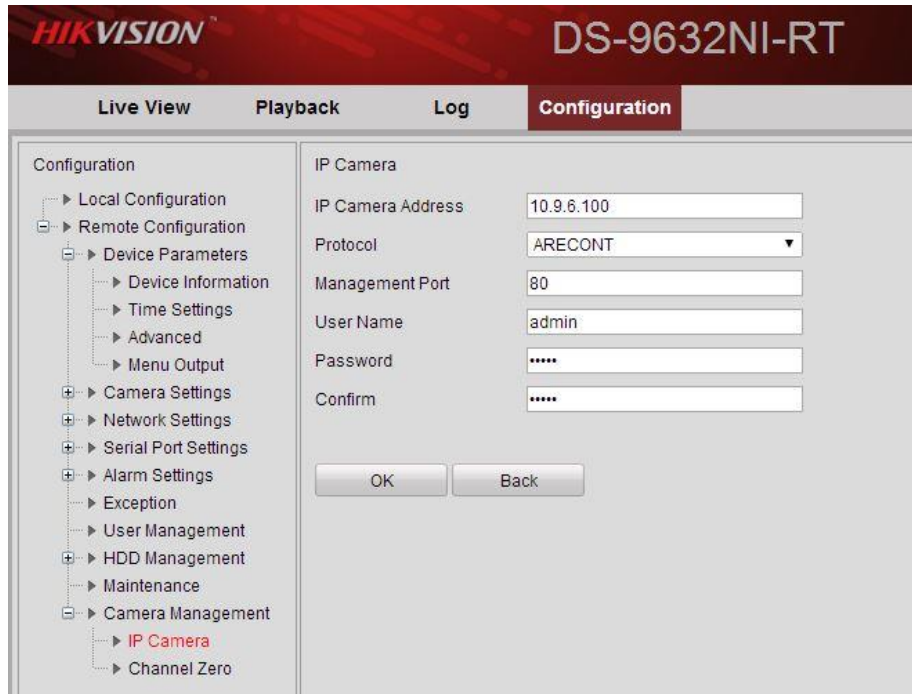


Figure 5

After adding the camera to the NVR, The camera will appear in the attached camera list (Figure 6).

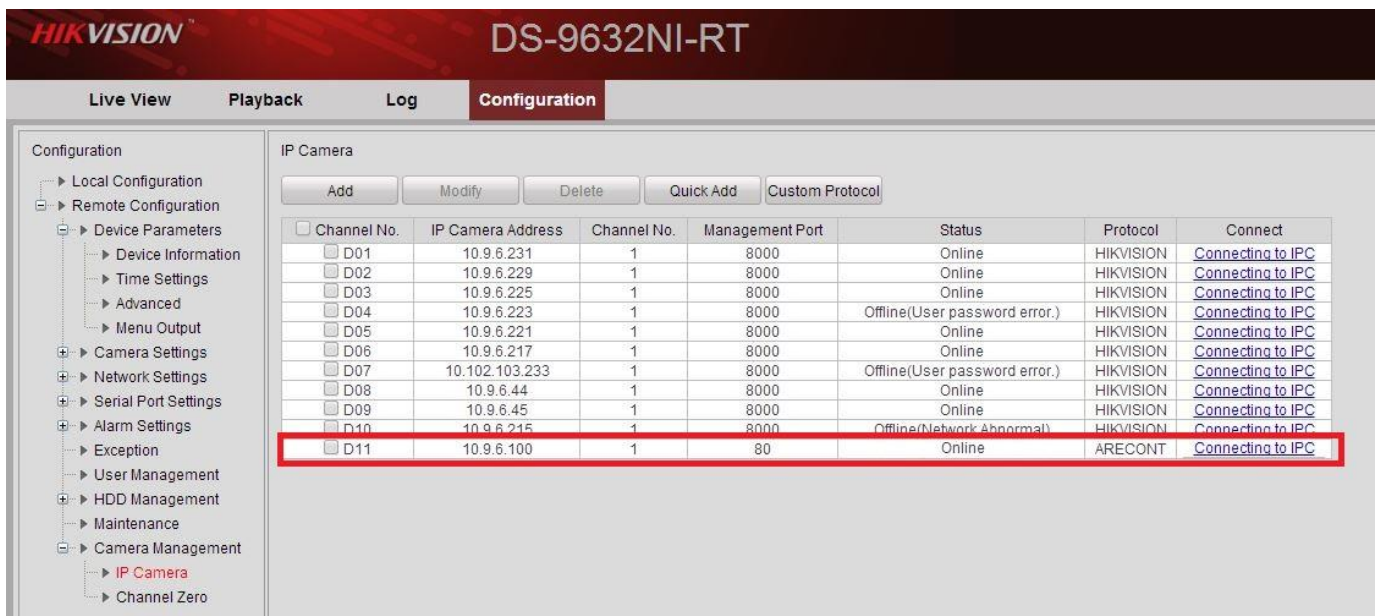


Figure 6

Title:	Adding Arecont 180 degree camera (AV8185DN)				
Date:	04/14/2014	Version:	1.0	Pages	7
Product:	9600 Series and 9016 Series NVRs				
Action Required:	Information only				

We need to repeat these steps for the second, third and fourth streams (Figure 6)

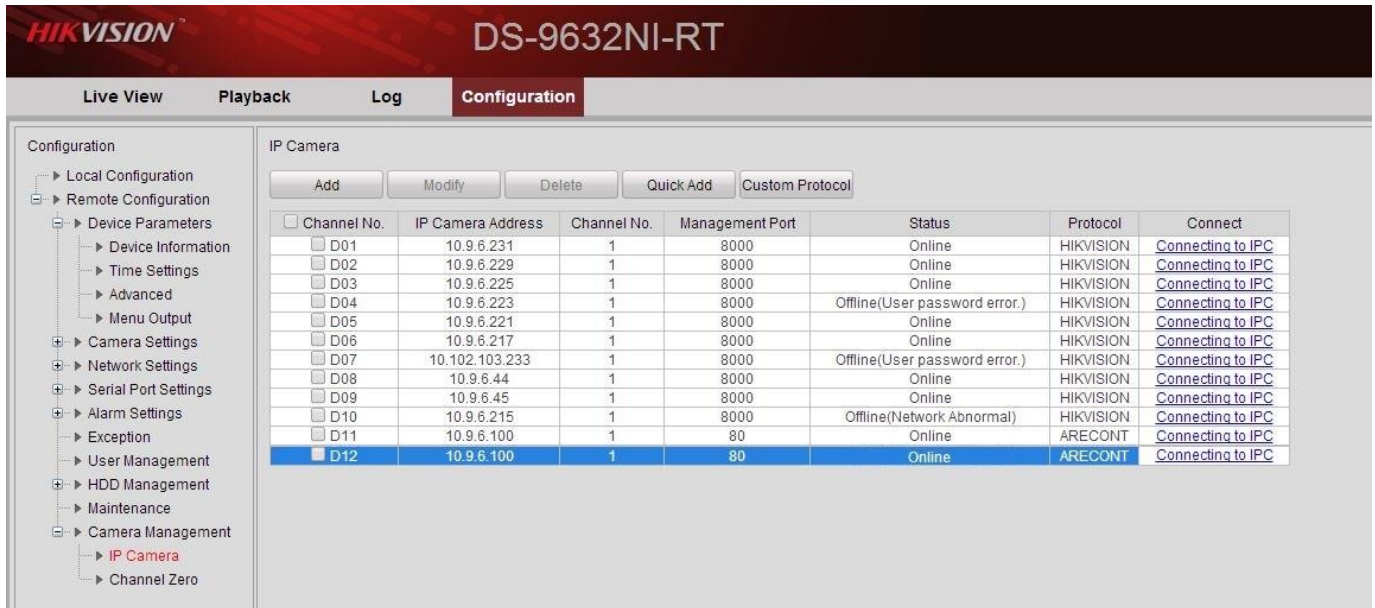


Figure (6)

After adding each stream, we need to manually change the stream number. For this, click on the second stream and press “MODIFY” (Figure 7).

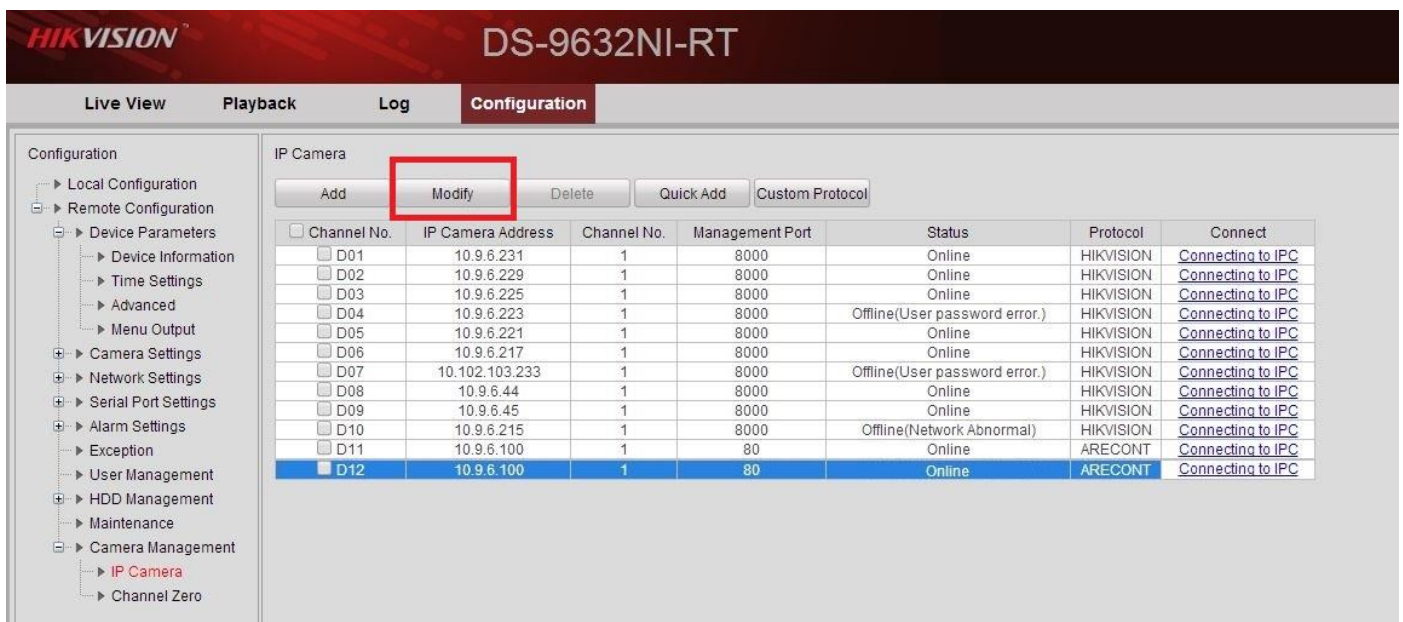


Figure 7

Title:	Adding Arecont 180 degree camera (AV8185DN)				
Date:	04/14/2014	Version:	1.0	Pages	7
Product:	9600 Series and 9016 Series NVRs				
Action Required:	Information only				

When entering the modification screen, we need to change the “CHANNEL NUMBER”, which represents the STREAM NUMBER (Figure 8, 9 and 10).

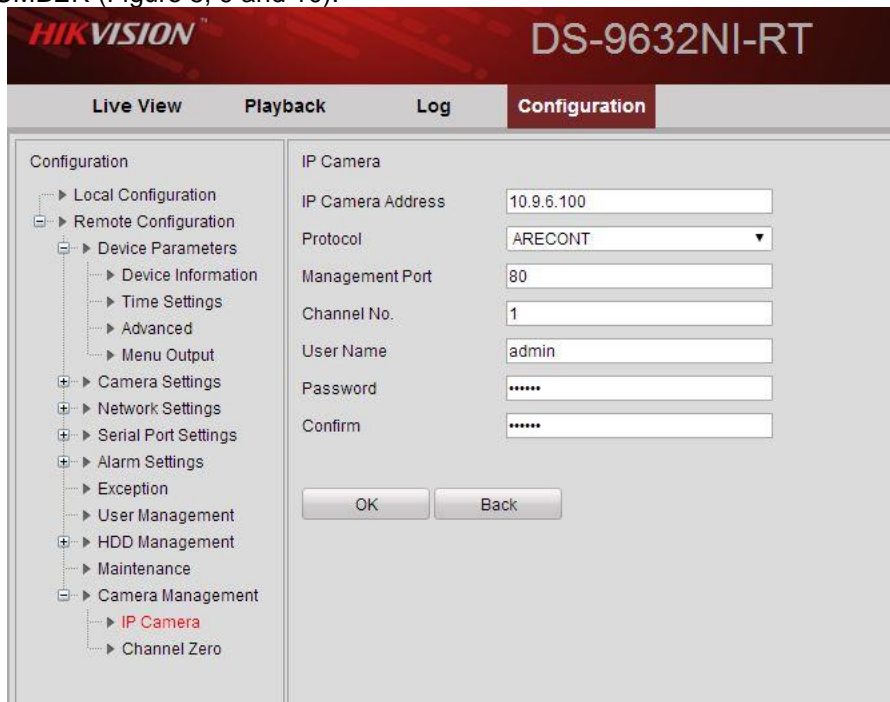


Figure 8

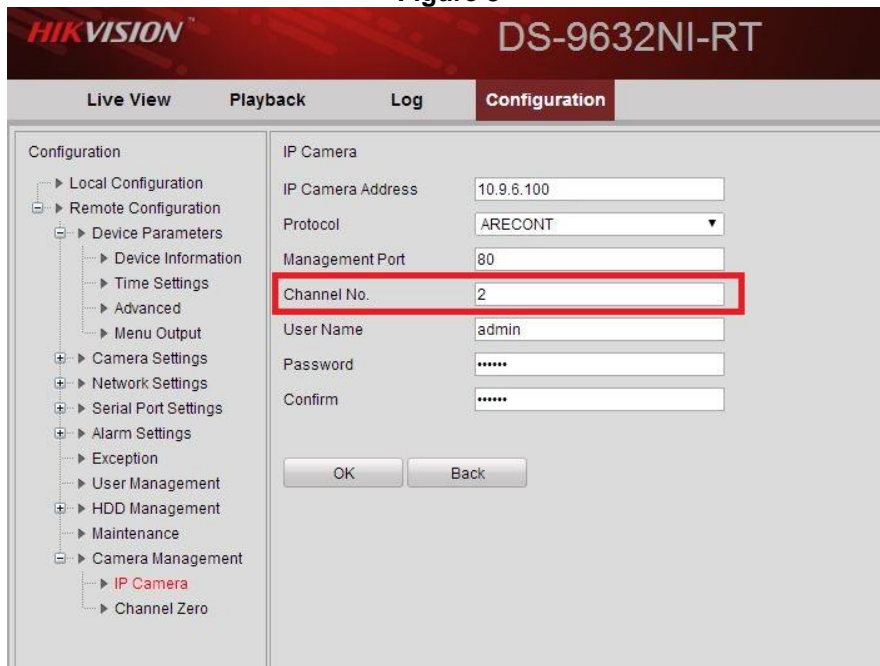


Figure 9

Title:	Adding Arecont 180 degree camera (AV8185DN)				
Date:	04/14/2014	Version:	1.0	Pages	7
Product:	9600 Series and 9016 Series NVRs				
Action Required:	Information only				

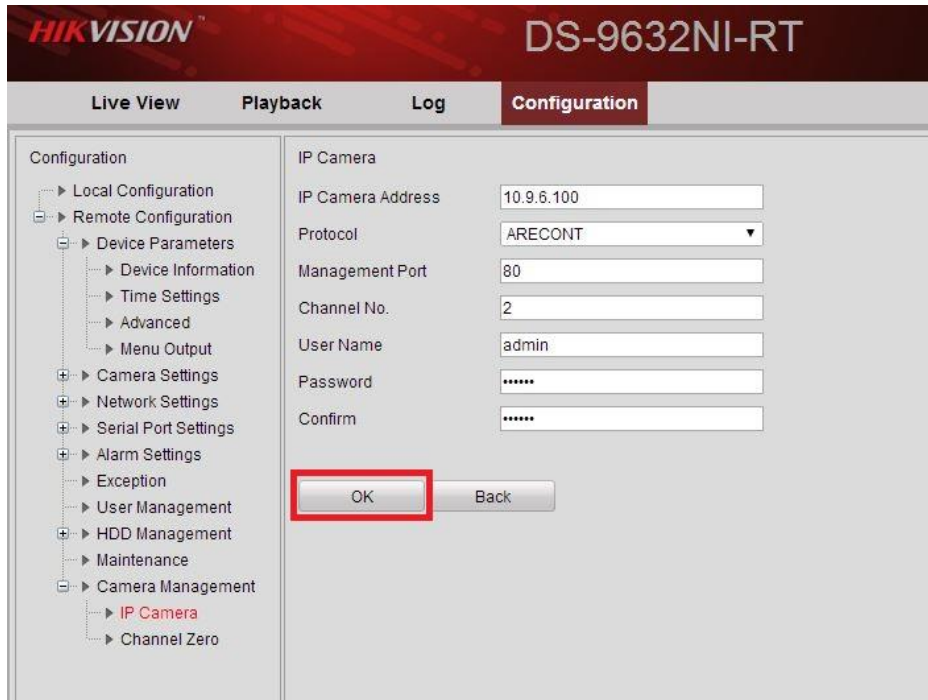


Figure 10

After These steps, the attached camera list will look like this (Figure 11).

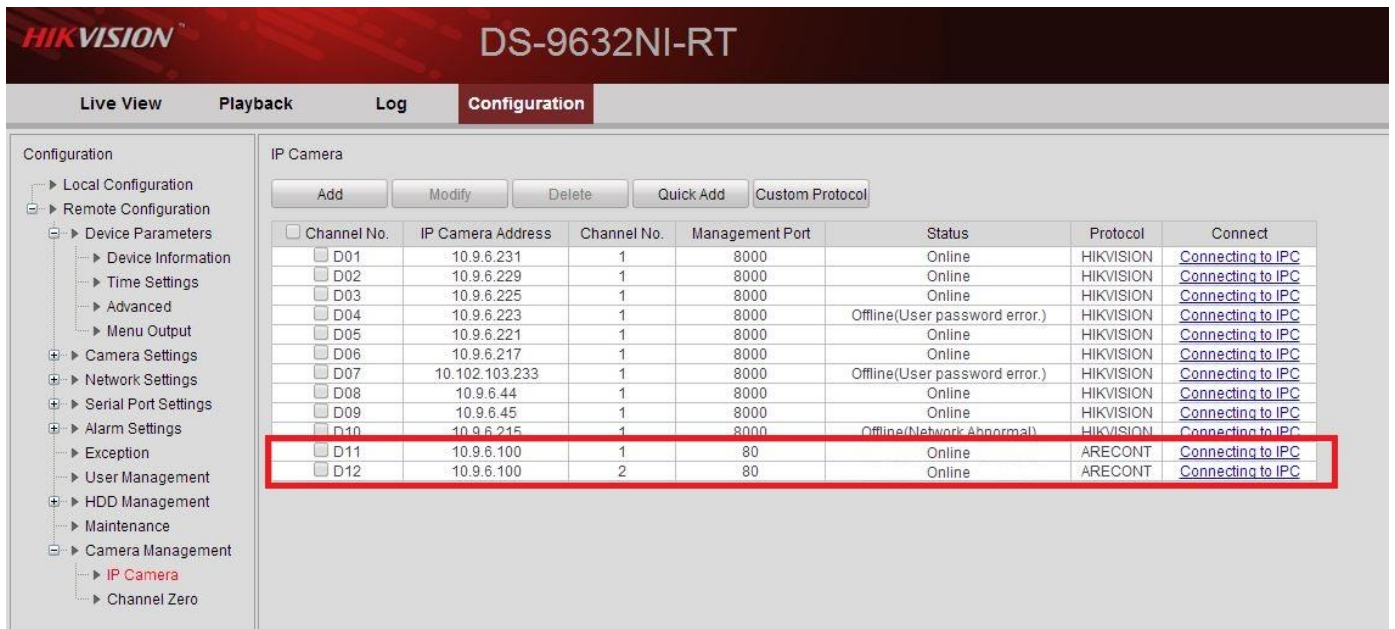


Figure 11

Title:	Adding Arecont 180 degree camera (AV8185DN)				
Date:	04/14/2014	Version:	1.0	Pages	7
Product:	9600 Series and 9016 Series NVRs				
Action Required:	Information only				

Repeat these steps for streams 3 and 4. Sometimes Arecont does not correspond the stream number with the image number (Figure 12).

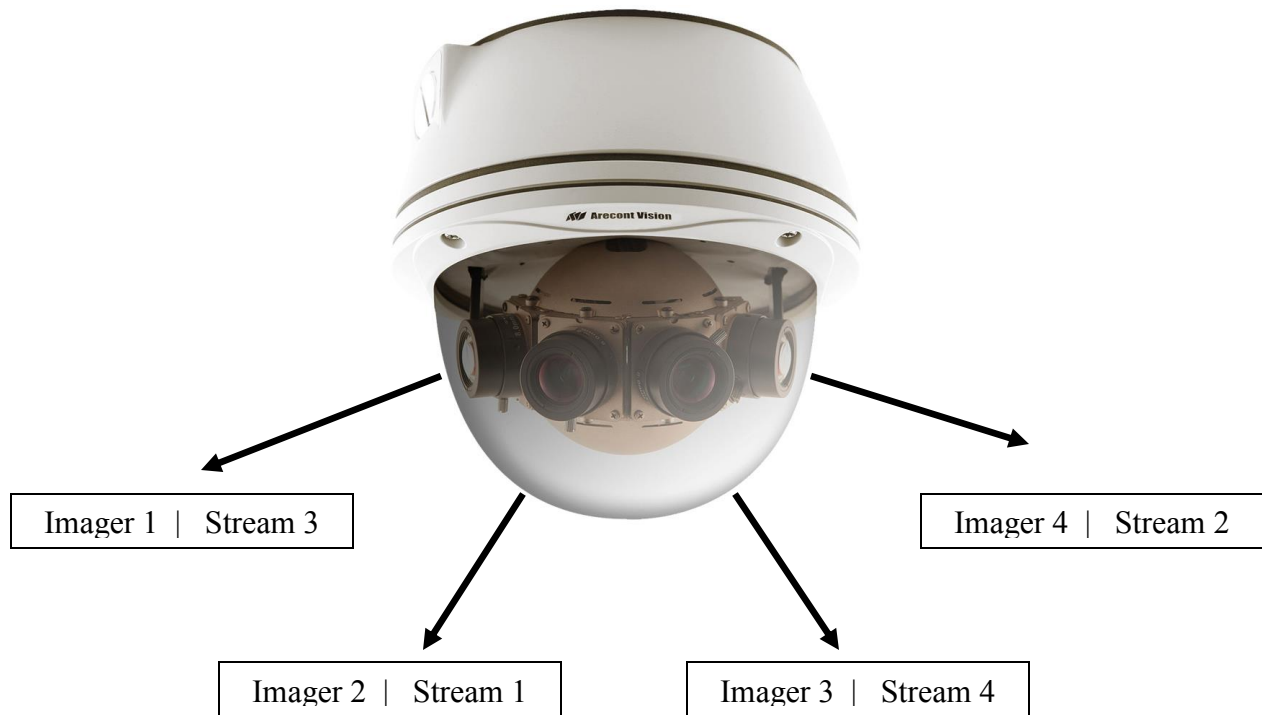


Figure 12 (This layout is just an example. Results may vary)