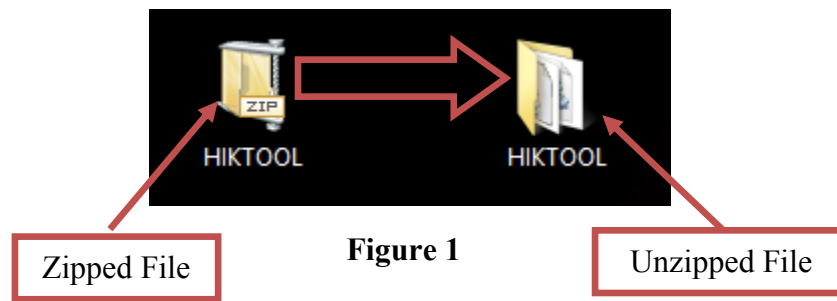


Title:	IP Camera Automatic Firmware Upgrade				
Date:	8/27/2014	Version:	1.0	Pages	5
Product:	PRO and VALUE Series IP Cameras				
Action Required:	Information only				

To flush the firmware on a HikVision Camera (PRO and VALUE series):

1. Download the HIKTOOL software from the link below:  
<https://www.dropbox.com/s/jw07or0uuakljqu/HIKTOOL.zip?dl=0>
2. Download the appropriate firmware for the camera from:  
[http://www.hikvision.com/en/us/download\\_more.asp?id=1353](http://www.hikvision.com/en/us/download_more.asp?id=1353)
3. Extract the TFTP Server software onto the DESKTOP (Figure 1).



4. Extract the firmware and copy the “DIGICAP.DAV” file into the TFTP folder

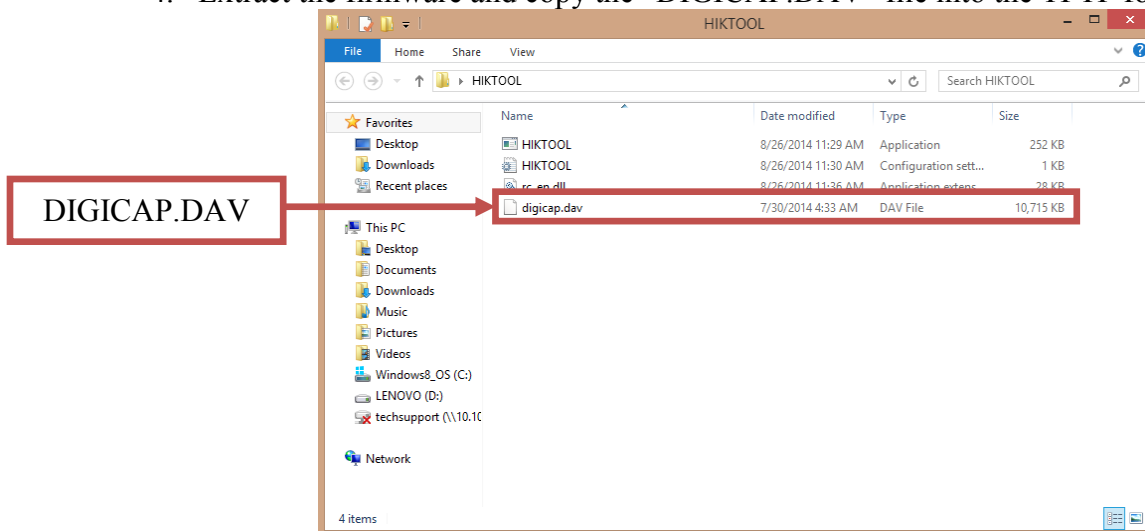
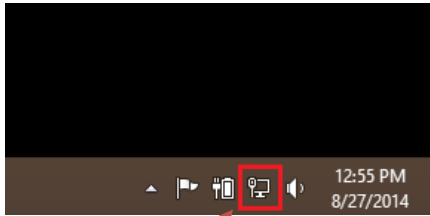


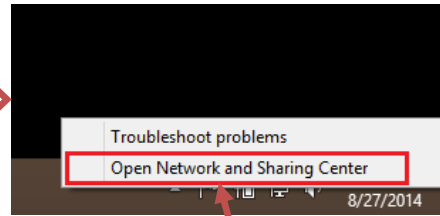
Figure 2

5. Manually change the IP address of the computer to **192.0.0.128** (Figure 3).

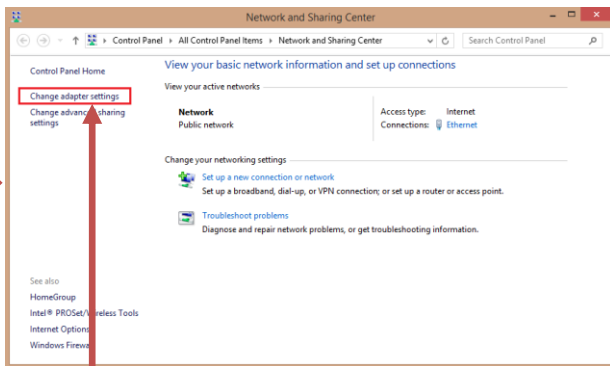
Title:	IP Camera Automatic Firmware Upgrade				
Date:	8/27/2014	Version:	1.0	Pages	5
Product:	PRO and VALUE Series IP Cameras				
Action Required:	Information only				



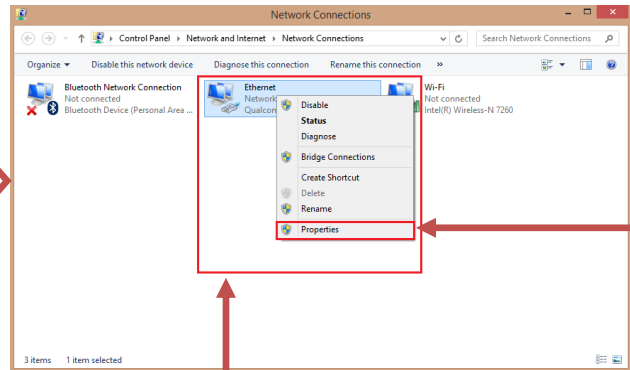
RIGHT-CLICK on  
“Network Connections”



CLICK on “Open Network  
and Sharing Center”



CLICK on “Change  
Adapter Settings”



RIGHT-CLICK on the  
network adapter

CLICK on  
“Properties”

Figure 3 (Continues on the next page)

Title:	IP Camera Automatic Firmware Upgrade				
Date:	8/27/2014	Version:	1.0	Pages	5
Product:	PRO and VALUE Series IP Cameras				
Action Required:	Information only				

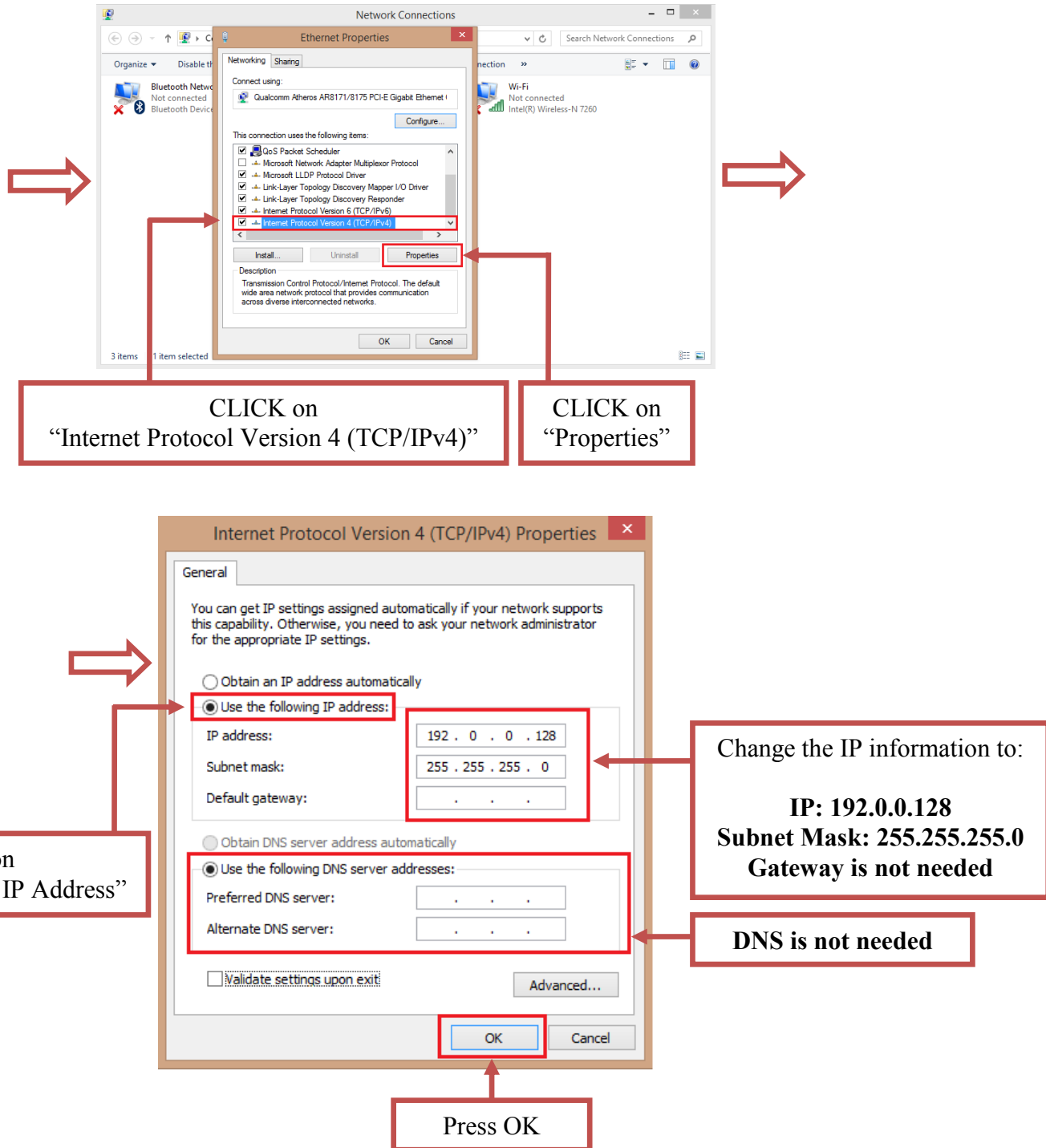
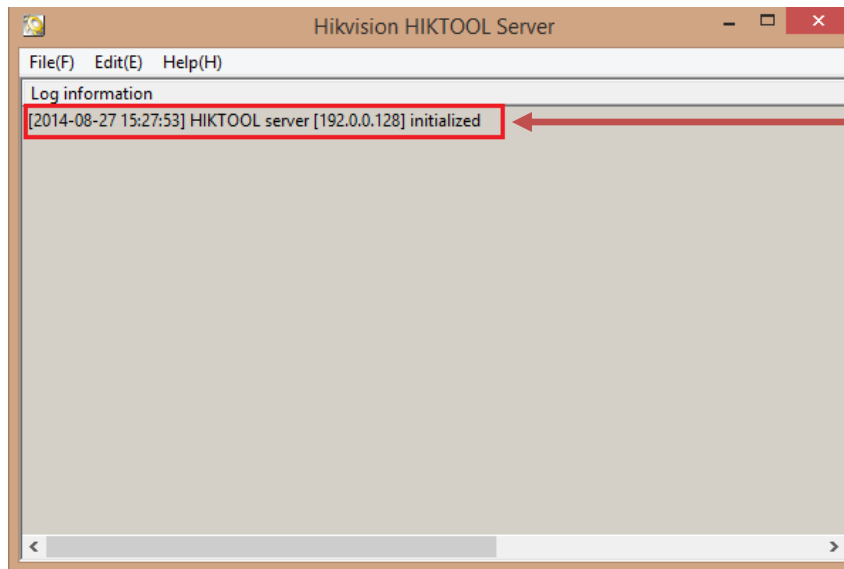


Figure 3

Title:	IP Camera Automatic Firmware Upgrade				
Date:	8/27/2014	Version:	1.0	Pages	5
Product:	PRO and VALUE Series IP Cameras				
Action Required:	Information only				

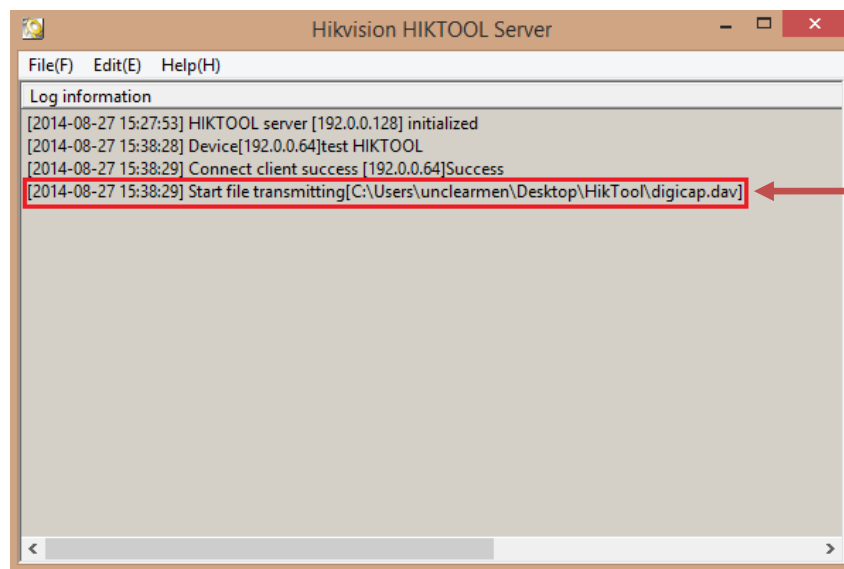
After the computer's IP address has been changed to **192.0.0.128**, connect the camera to the computer's network port using a regular network cable (no need to use a crossover cable. Power the camera either with a POE Injector or 12VDC Power Supply). Launch the HIKTOOL software. The following window will come up (Figure 4).



Please note:  
The software states the **192.0.0.128** IP address

**Figure 4**

After the window comes up, power down the camera. Wait 30 seconds and power the camera back up. After a few split seconds the file transmission will begin (Figure 5).

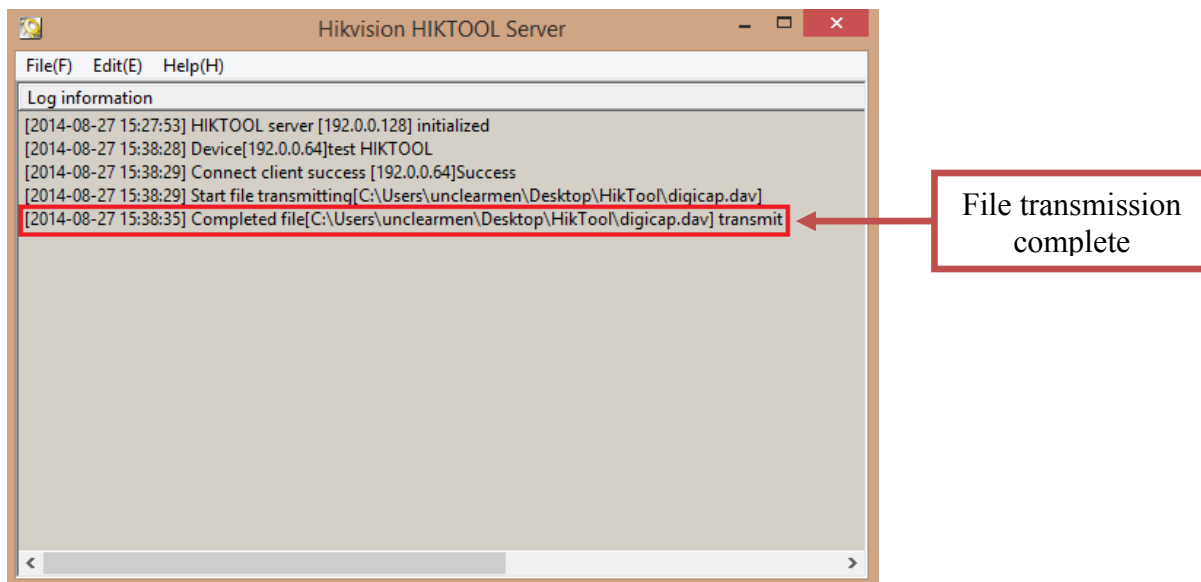


File transmission starts

**Figure 5**

Title:	IP Camera Automatic Firmware Upgrade				
Date:	8/27/2014	Version:	1.0	Pages	5
Product:	PRO and VALUE Series IP Cameras				
Action Required:	Information only				

Several seconds later the file transmission will be completed (Figure 6).



**Figure 6**

After the file transmission is complete, the camera will need up to 3 minutes to install the firmware. As soon as the firmware is installed, the camera will turn on, display the live view image and will be accessible on the network.