

<b>Title:</b>	Plug and Play NVRs FAQs with Secure Activation Procedures	<b>Version:</b>	1.0	<b>Date:</b>	6/24/15
<b>Product:</b>	All Hikvision DVRs/NVRs				
<b>Action Required:</b>	None, Information only				

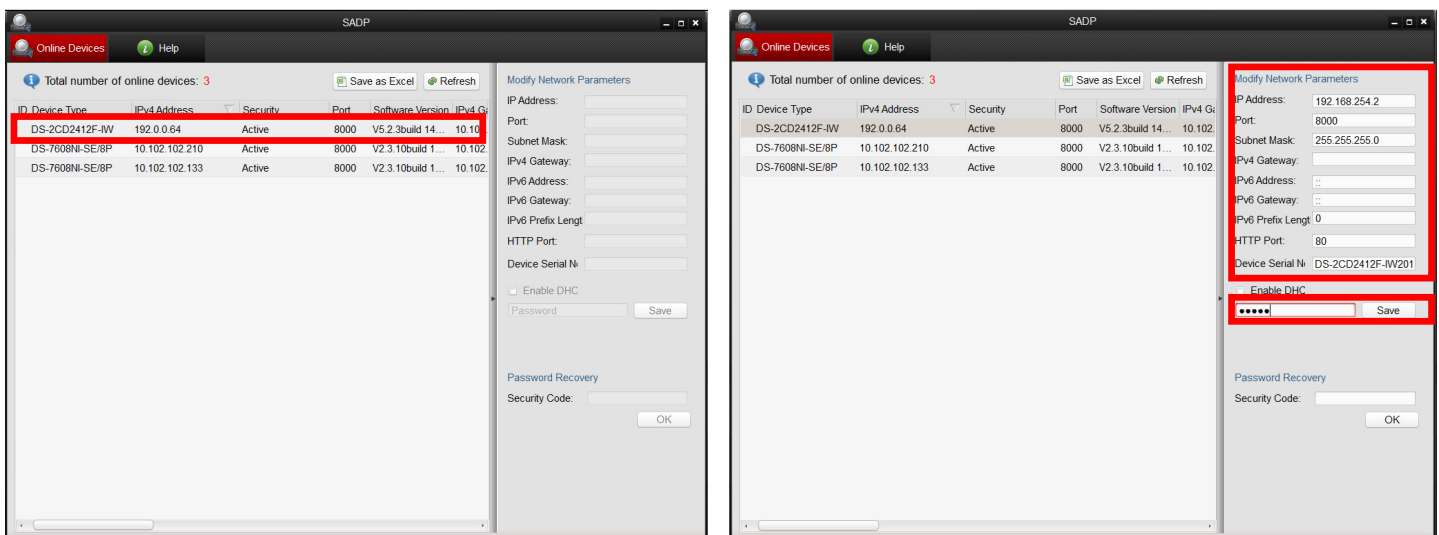
## Summary

With the introduction of the new secure activation procedure, the interaction between NVRs with a Plug-and-Play feature and IP cameras has slightly changed. There have been some questions and concerns regarding this issue, and this technical bulletin will provide solutions for three different scenarios that can occur.

### 1. I have a DS-76xxNI-SE/(8)P NVR with firmware v2.3.10 build 141128 or below. How do I connect cameras with firmware v5.3.0 to my NVR?

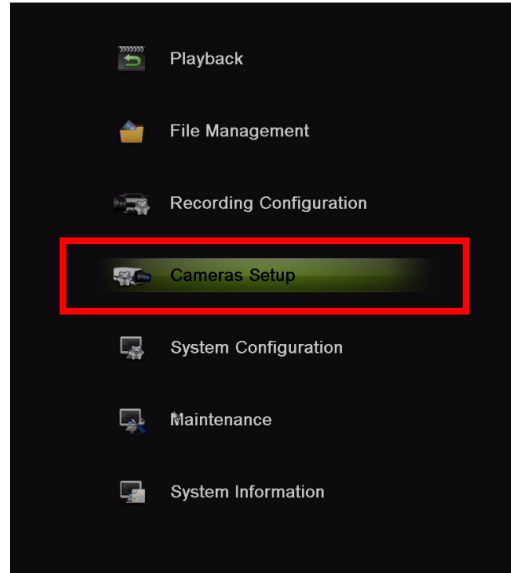
To add cameras with firmware v5.3.0 to the DS-76xxNI-SE/(8)P NVR, the cameras have to be activated before they can be added. The camera activation is discussed in “**New Secure Activation Process for IP Cameras**” technical bulletin. After the cameras are activated, the cameras’ IP address must be changed to **192.168.254.x** (e.g., 192.168.254.2) in order to be added to the NVR in a **MANUAL** mode.

1. Activate the cameras (see “**New Secure Activation Process for IP Cameras**” technical bulletin)
2. Change the cameras IP address to 192.168.254.x (e.g., 192.168.254.2, 192.168.254.3...) (**Figure 1**).
3. On the NVR go to **Menu**→**CAMERA SETUP** (**Figure 2**).
4. Click the PENCIL (edit) icon next to the channel number (D1, D2...) (**Figure 3**).
5. Change the ADDING METHOD to **MANUAL** (**Figure 4**).
6. Enter the camera’s IP address, username, and password (**Figure 5**).
7. Click **APPLY**.

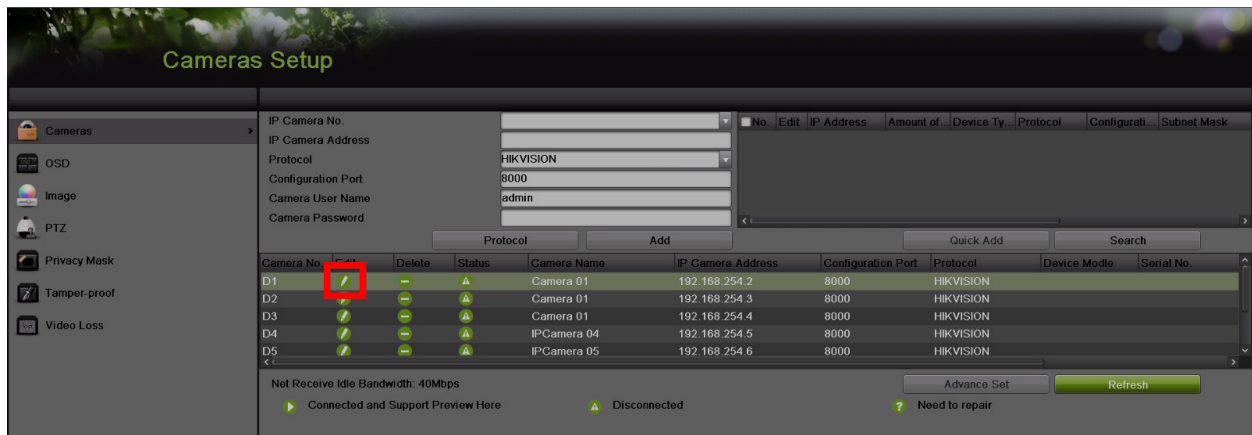


**Figure 1.** Changing the camera’s IP address

<b>Title:</b>	Plug and Play NVRs FAQs with Secure Activation Procedures	<b>Version:</b>	1.0	<b>Date:</b>	6/24/15
<b>Product:</b>	All Hikvision DVRs/NVRs				
<b>Action Required:</b>	None, Information only				



**Figure 2**



**Figure 3** Press the PENCIL (edit) icon

<b>Title:</b>	Plug and Play NVRs FAQs with Secure Activation Procedures	<b>Version:</b>	1.0	<b>Date:</b>	6/24/15
<b>Product:</b>	All Hikvision DVRs/NVRs				
<b>Action Required:</b>	None, Information only				

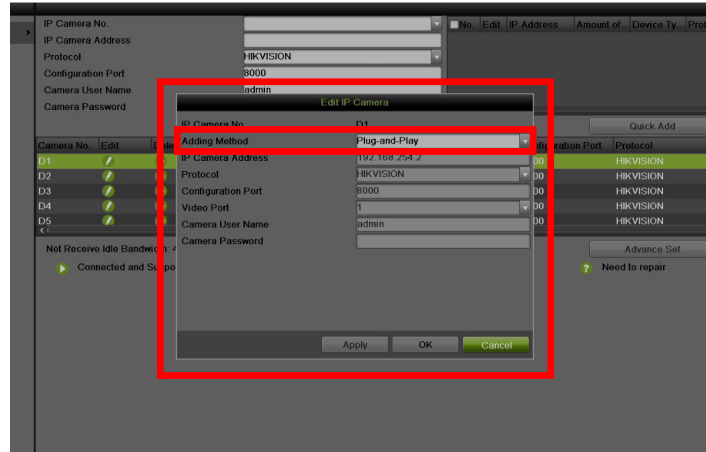


Figure 4 Change the adding method from Plug-n-Play to MANUAL.

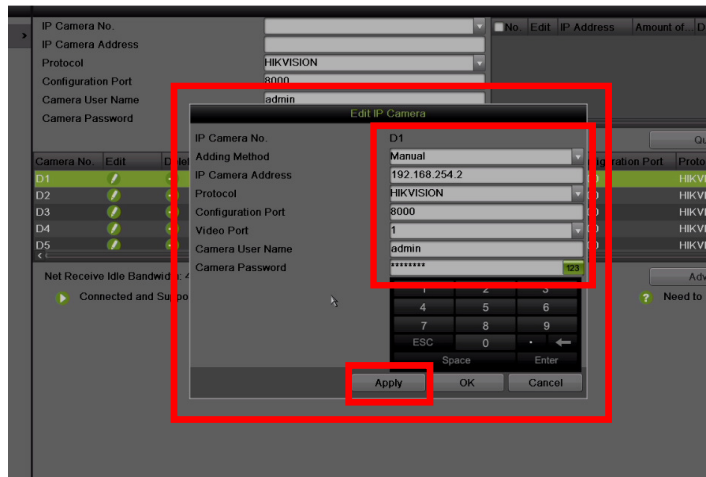


Figure 5. Enter the camera's IP address and the password

**2. I have a DS-76xxNI-E1(E2) NVR with firmware v3.0.7 or older, or DS-7716NI-SP/16 NVR with firmware v3.1.3 or older. How do I connect cameras with firmware 5.3.0 to my NVR?**

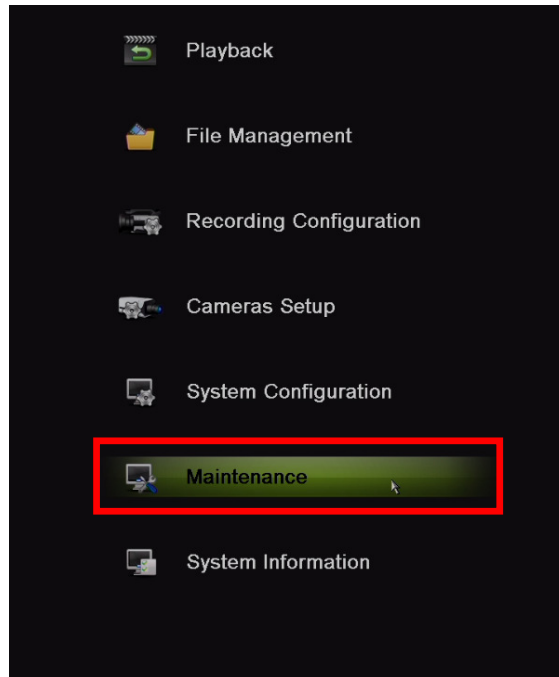
There are two approaches to this situation.

**A.** Upgrade the firmware of the DS-76xxNI-E1(E2) to v3.1.0. If working with DS-7716NI-SP/16, then upgrade the NVR to v3.1.5. Change the NVR's password to at least a minimum required WEAK level. The password strength is discussed in the "New Secure Activation Process for DVRs/NVRs" technical bulletin. After performing those two steps, connect the cameras to the NVR.

1. Download the firmware from [http://www.hikvision.com/en/us/download\\_more.asp?id=1509](http://www.hikvision.com/en/us/download_more.asp?id=1509)

<b>Title:</b>	Plug and Play NVRs FAQs with Secure Activation Procedures	<b>Version:</b>	1.0	<b>Date:</b>	6/24/15
<b>Product:</b>	All Hikvision DVRs/NVRs				
<b>Action Required:</b>	None, Information only				

2. Unzip the firmware and copy the “**digicap.mav**” file to a USB flash drive
3. Go to MENU→MAINTENANCE→UPGRADE (**Figures 6 and 7**).
4. Select the “**digicap.mav**” and click the UPGRADE button. The NVR will reboot after the upgrade. (Please refer to the firmware upgrade video on our YouTube channel <https://www.youtube.com/watch?v=vPk5K4RE22A>)
5. Go to MENU→SYSTEM CONFIGURATION→USERS and click the PENCIL (edit) icon next to the admin username (**Figure 8**).
6. Enter the new password and click OK (**Figure 9**).
7. After the password is changed, connect the cameras to the NVR



**Figure 6**

<b>Title:</b>	Plug and Play NVRs FAQs with Secure Activation Procedures	<b>Version:</b>	1.0	<b>Date:</b>	6/24/15
<b>Product:</b>	All Hikvision DVRs/NVRs				
<b>Action Required:</b>	None, Information only				

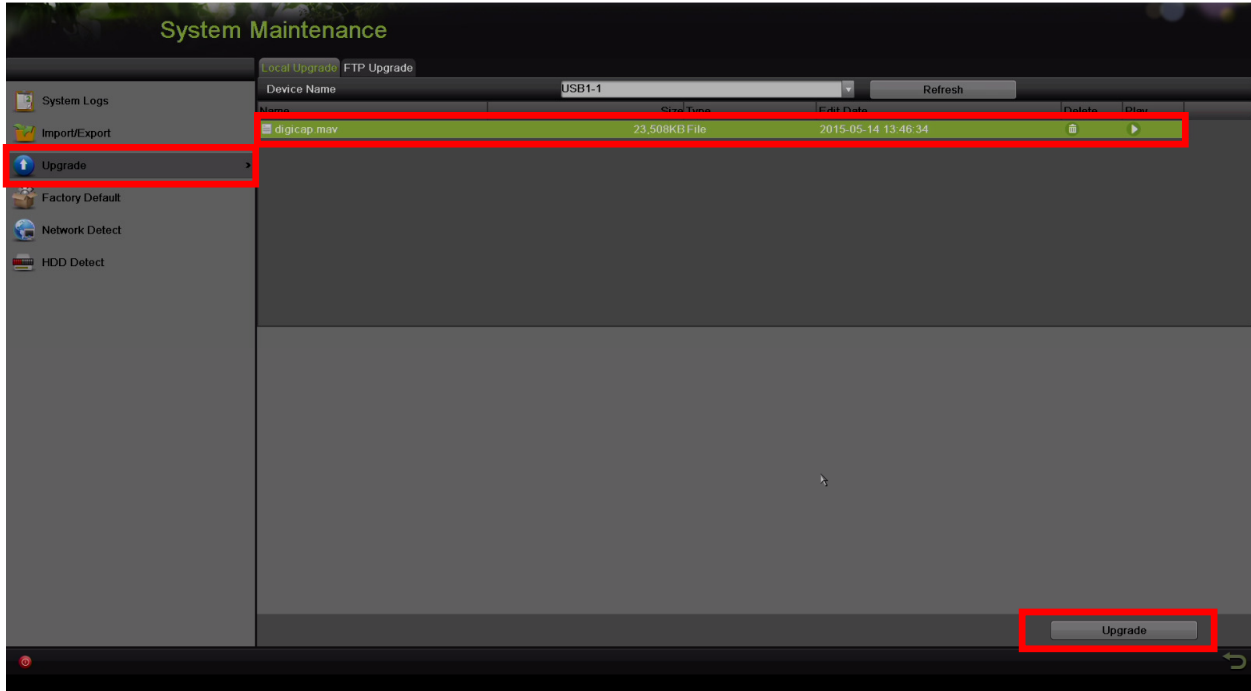


Figure 7. Upgrading the firmware

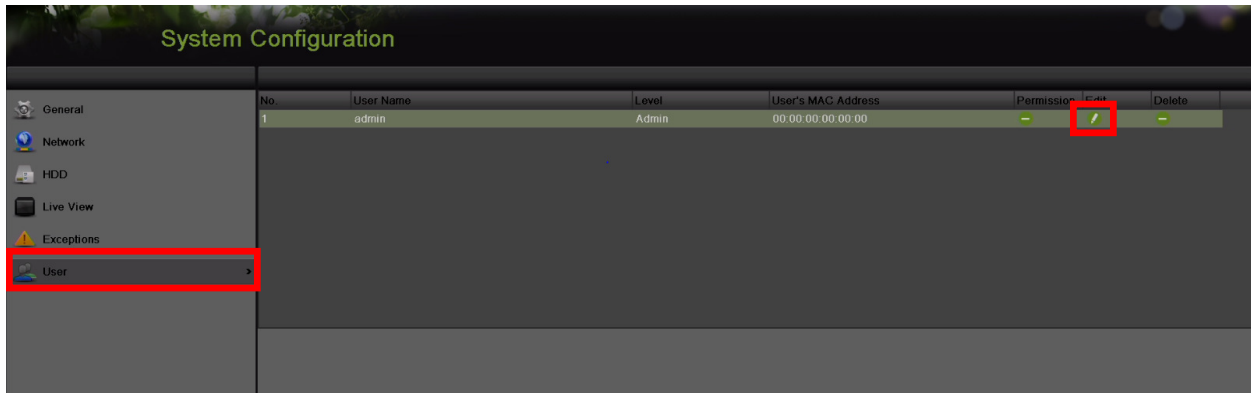


Figure 8. Go to Users and edit the password

<b>Title:</b>	Plug and Play NVRs FAQs with Secure Activation Procedures	<b>Version:</b>	1.0	<b>Date:</b>	6/24/15
<b>Product:</b>	All Hikvision DVRs/NVRs				
<b>Action Required:</b>	None, Information only				

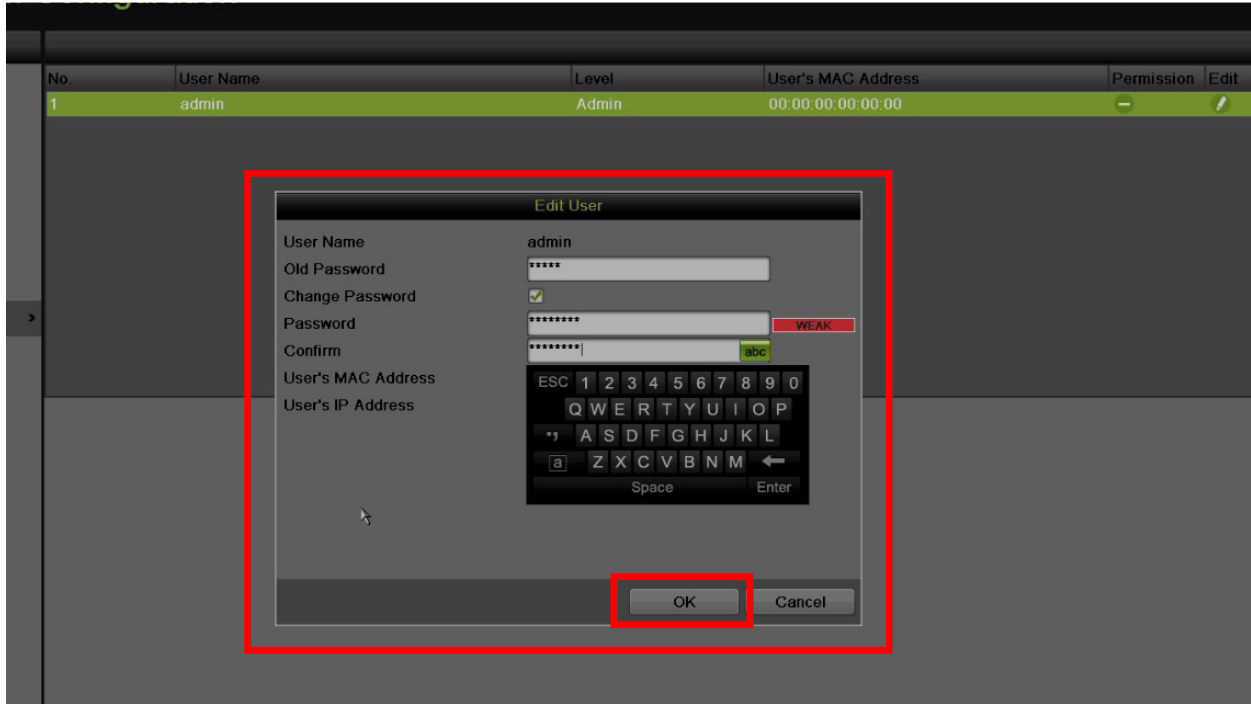


Figure 9. Enter the new password

B. Use the same method discussed for adding cameras to **DS-760xxNI-SE/(8P)** on **page 1**.

**3. I have a DS-76xxNI-E1(E2) or DS-7716NI-SP/16 NVR with June 2015 firmware. How do I connect cameras with firmware 5.3.0 to my NVR?**

There are three approaches to this situation:

- A. Activate the NVR, then connect the cameras to the built-in POE switch. The cameras will be activated by the NVR and the NVR’s password will be assigned to the cameras. To activate the NVR, please see the **“New Secure Activation Process for DVRs/NVRs”** technical bulletin.
- B. The NVR and the cameras can be activated separately using the same password for the cameras and the NVR (see **“New Secure Activation Process for DVRs/NVRs”** and **“New Secure Activation Process for IP Cameras”** technical bulletins). After activating the devices, the cameras can be plugged in to the NVR and the Plug-n-Play feature will connect to the cameras. After exiting the menu, the feature will populate the cameras on the screen.
- C. The cameras and the NVR can be activated using different passwords (see **“New Secure Activation Process for DVRs/NVRs”** and **“New Secure Activation Process for IP Cameras”** technical bulletins). After activation, the cameras need to be manually added to the NVR using the method discussed on **page 1**.