

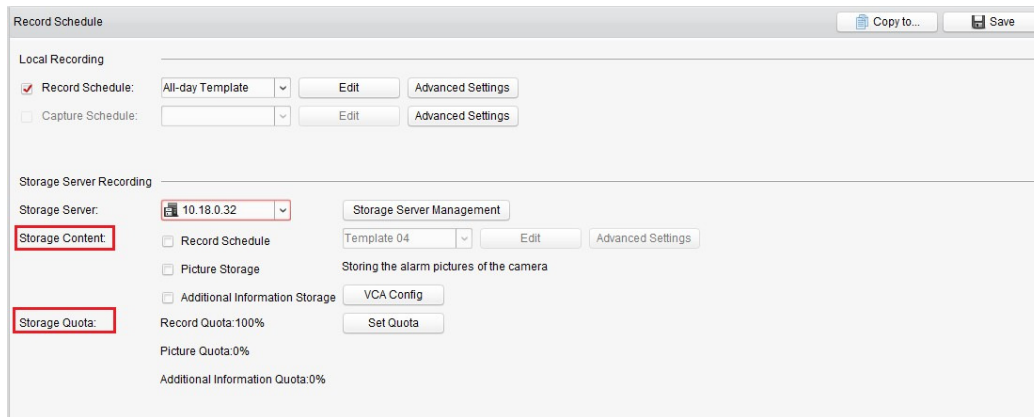
Title:	iVMS-4200 v2.3.0.4 Release Notes	Version:	1.0	Date:	4/24/15
Product:	iVMS-4200 Application Software				
Action Required:	None, Information Only				

General

1. Change the button as flat style on device management page, the same as iVMS-5200.
2. Change the GUI for playback interface, keep the style same as iVMS-5200.
3. Highly improved decoding capacity for live view and playback under 64-bit systems.

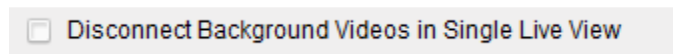
Storage Server

1. Supports storing the alarm pictures of the camera when related events and alarm trigger, searching, and downloading the pictures via log search.
2. Supports storage content and storage quota configuration under record schedule in control pane, including record schedule, picture storage, and additional information storage (you need go to VCA Config interface to set the VCA information for ids devices first).

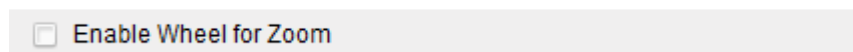


Live View

1. Supports disconnecting background videos when switching to single-channel view mode from multi-channels and restores to view the original channels if reversed. It is disabled by default and can be configured in system configuration.



2. Supports Channel-Zero display switch by pressing ctrl + double clicking the mouse.
3. Supports configure wheel for zoom in system configuration; if disabled, the camera can't be zoomed once mouse wheel is operated.

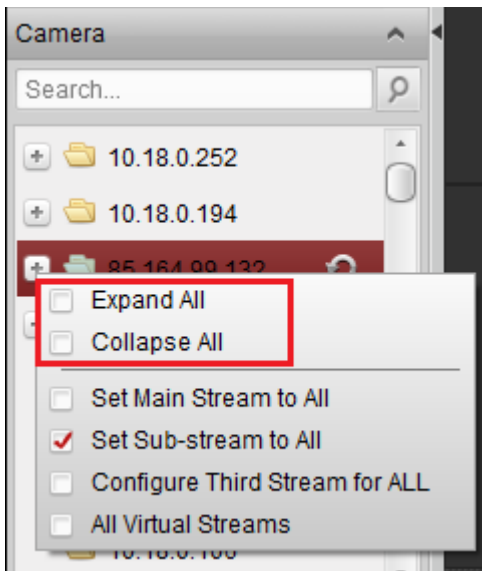


Title:	iVMS-4200 v2.3.0.4 Release Notes	Version:	1.0	Date:	4/24/15
Product:	iVMS-4200 Application Software				
Action Required:	None, Information Only				

4. Add menu button on PTZ panel, supports call and displays the menu of analog PTZ dome by clicking it rather than through No.95 preset as before
5. Supports custom window division in live view and playback page, users can define the window style as they like.
6. (Live View/Playback>>Click widow division button on low right corner)



7. Supports expanding and collapsing all camera nodes synchronously in live view and playback interface.



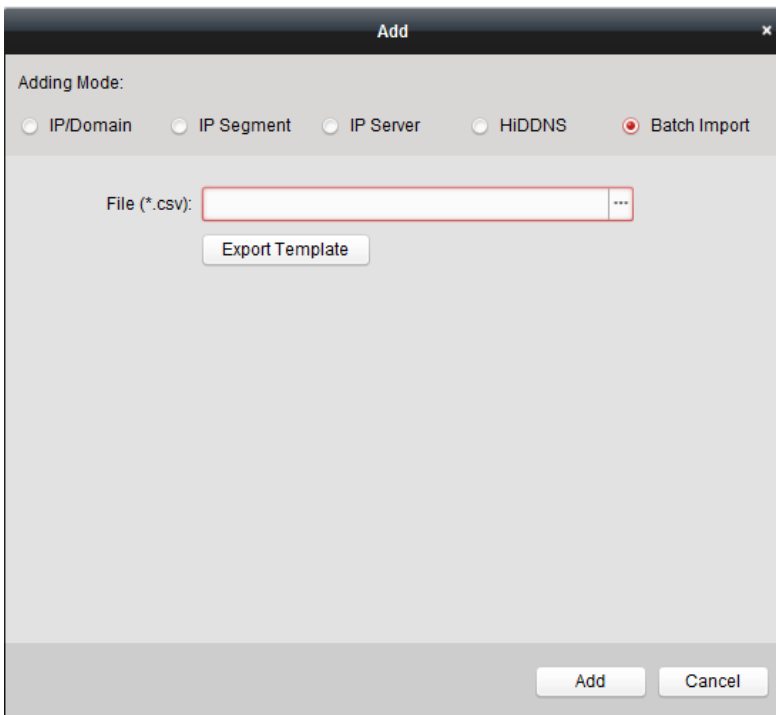
8. Supports displaying alarm status icon on camera tree topology in live view interface once any alarm triggers.
9. Supports showing the border status of live view window by displaying different colors. If choose but not focus, the border is white. Otherwise, it is red and supports calling corresponding presets by clicking number button on keyboard.

Title:	iVMS-4200 v2.3.0.4 Release Notes	Version:	1.0	Date:	4/24/15
Product:	iVMS-4200 Application Software				
Action Required:	None, Information Only				

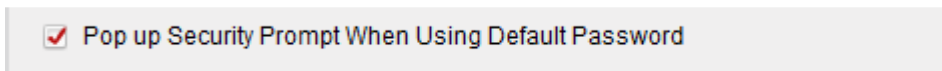
Device Management

1. Supports batch importing of the encoding devices via .csv format file (users can export template first, then input the required information).

(Device Management>>Encoding Device>>Add Device>>Batch import)



2. Supports the QR code function for encoding devices. You can select one or more encoding devices at a time, generate the corresponding QR code. Then these devices can be conveniently added by scanning QR code on iVMS-4500 (v4.0 and later versions support this feature).
3. Supports the controlling SADP module’s show and hide function; when restarting or upgrading iVMS-4200 to a newer version, it will keep the original status as show or hide.
4. When logging in to encoded devices by using the default password of “12345” under the admin account for the first time, the iVMS-4200 will pop up a prompt to remind users to change the password for security reasons. This can be enabled/disabled in system configuration.



5. Supports adding, live view, and playback economic fisheye cameras as DS-2CD2942 and dual-lens cameras as DS-2CD26812F-IS.

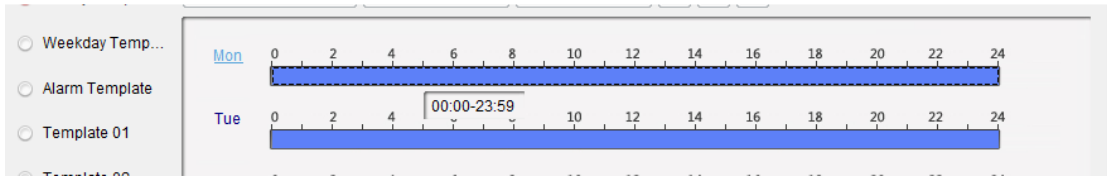
Title:	iVMS-4200 v2.3.0.4 Release Notes	Version:	1.0	Date:	4/24/15
Product:	iVMS-4200 Application Software				
Action Required:	None, Information Only				

Remote Playback

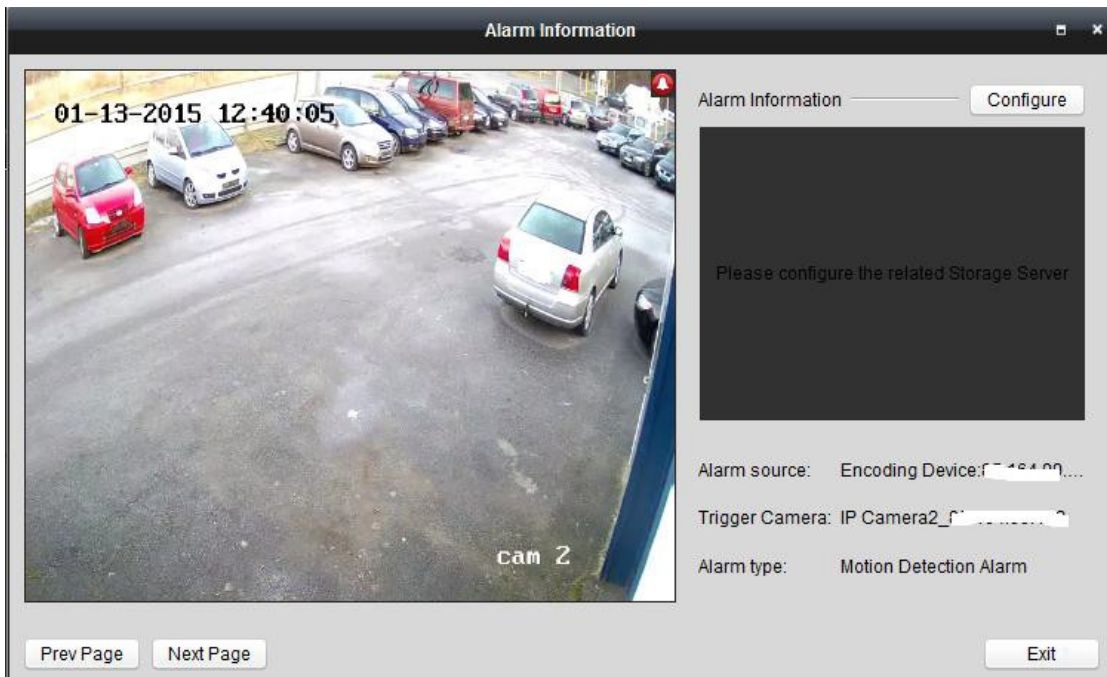
1. Supports VCA detection search and behavior analysis search in playback interface. Thus users can search out related event videos according to this search condition.

Other

1. Supports accurately editing the time period of schedule template on recording and capture schedule.

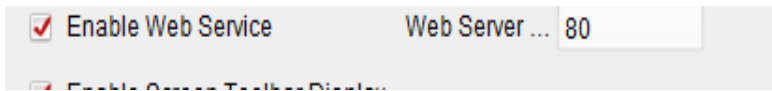


2. Optimizes the alarm trigger pop-up image function. Supports playback of 30s of recorded video and shows a picture, if so configured to, the alarm picture storage function on storage server.

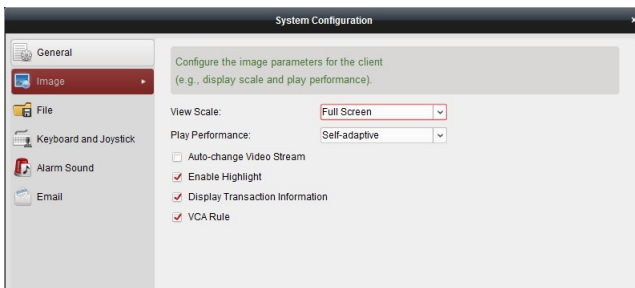


Title:	iVMS-4200 v2.3.0.4 Release Notes	Version:	1.0	Date:	4/24/15
Product:	iVMS-4200 Application Software				
Action Required:	None, Information Only				

3. Supports heat map and people counting statistics.
4. Supports up to 64 cameras' statistics at a time for the heat map function.
5. Supports configuring Web services in system configuration, disable as default.



6. Adds Image node in the system configuration interface, in which users can configure VCA rule, etc.



7. Supports multi message page switch on bottom right corner, rather than covering it if new message prompt pops up.
8. Supports open .csv format log file.
9. Supports configure custom window division permission for different users in account management.

Title:	iVMS-4200 v2.3.0.4 Release Notes	Version:	1.0	Date:	4/24/15
Product:	iVMS-4200 Application Software				
Action Required:	None, Information Only				

10. Adds data and statistics tab in control pane, including heat mapping and people counting.

