

Title:	Enabling Secure Socket Layer (SSL) Connection in Plug and Play NVR	Version:	v.3.3.4	Date:	111015US
Product:	Hikvision Plug and Play NVRs	Page:	1 of 4		
Action Required:	None, Information Only				

Introduction

This document explains how to enable a secure socket layer (SSL) connection support in a Hikvision Plug and Play NVR. A secure socket layer connection creates an encrypted communication path between a Web server and a Web browser, allowing for private information to be transmitted without the problems of eavesdropping, data tampering, or message forgery.

Procedure

1. Open NVR's main page in a Web browser.
2. In the **Configuration** tab, under **Network > Basic Settings > Port**, verify that the default https port is **443**.

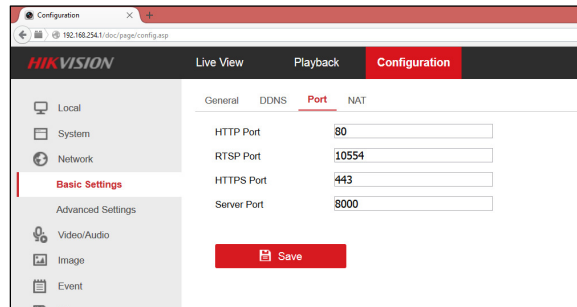


Figure 1 Configuration > Network > Basic Settings > Port

3. In the **Configuration > Network > Advanced Settings** screen, select **HTTPS**. Note that the **Enable** selection is deactivated until a certificate is installed. To install a certificate, select the **Create Self-signed Certificate** radio button under the **Installation Method** and click on **Create**.

NOTE: If a Signed Certificate is available, select the appropriate radio button and follow the instructions.

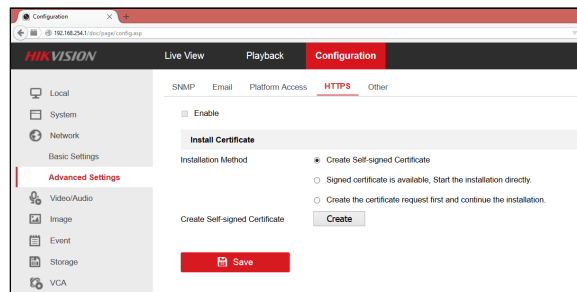


Figure 2 Configuration > Network > Advanced Settings > HTTPS

Title:	Enabling Secure Socket Layer (SSL) Connection in Plug and Play NVR	Version:	v.3.3.4	Date:	111015US
Product:	Hikvision Plug and Play NVRs			Page:	2 of 4
Action Required:	None, Information Only				

4. The certificate **Create** window will be shown:

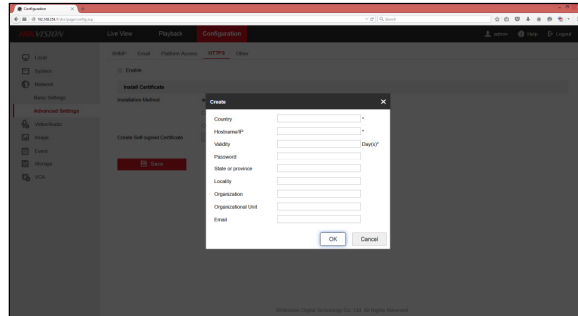
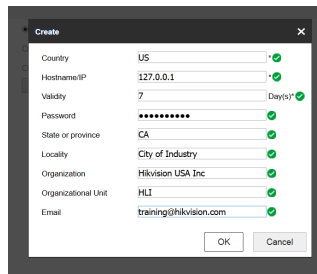


Figure 3 Certificate "Create" Window

5. Fill in the fields with the appropriate information, as shown in the example below. Acceptable values for the entries will show a green checkmark. Click on **OK**.

EXAMPLE:



- Country: Two-letter initials
- Hostname/IP: IP address or server hostname where the certificate is being held. If local to the system, use a **localhost** address.
- Validity: Number of days the certificate will be valid.
- Password: Used to modify the certificate.
- State or Province: Significant to the Certificate only.
- Locality: Significant to the Certificate only.
- Organization: Significant to the Certificate only.
- Organizational Unit: Significant to the Certificate only.
- E-Mail Information: Significant to the Certificate only.

6. Upon creation of the certificate, its properties will be shown. Save the setting. The **Enable** selection will be available.

Title:	Enabling Secure Socket Layer (SSL) Connection in Plug and Play NVR	Version:	v.3.3.4	Date:	111015US
Product:	Hikvision Plug and Play NVRs	Page:	3 of 4		
Action Required:	None, Information Only				

7. Enable the HTTPS service by marking the **Enable** box and clicking on **Save**. A **Save Succeeded** message will appear.

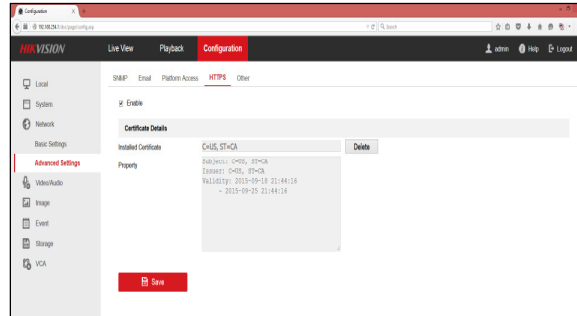


Figure 4 Configuration > Network > Advanced Settings > HTTPS

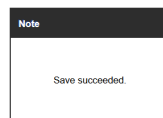


Figure 5 Save Succeeded Window

8. Open a WEB browser and enter the NVR's IP address (e.g., https://<NVR_IP_address>). A warning message will be shown.

NOTE: The warning page shown depends on the Web browser used.

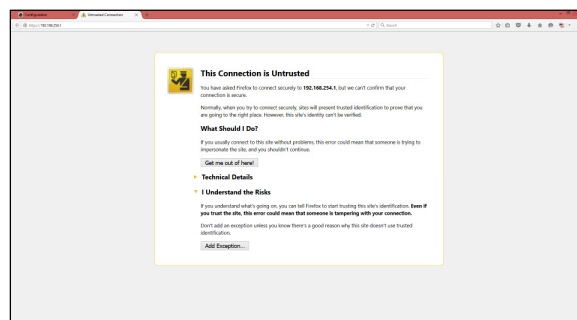


Figure 6 Warning Page

9. Click "I Understand the Risks" radio button.
10. Click the **Add Exception** button.

Title:	Enabling Secure Socket Layer (SSL) Connection in Plug and Play NVR	Version:	v.3.3.4	Date:	111015US
Product:	Hikvision Plug and Play NVRs	Page:	4 of 4		
Action Required:	None, Information Only				

11. Enter the secure https NVR url as shown below, and click on the **Confirm Security Exception** button:

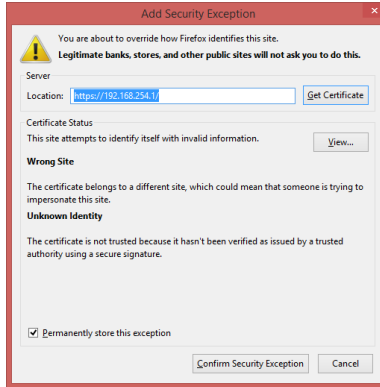


Figure 7 Add Security Exception Window

12. You will be shown the NVR's main page over a secure HTTPS connection:

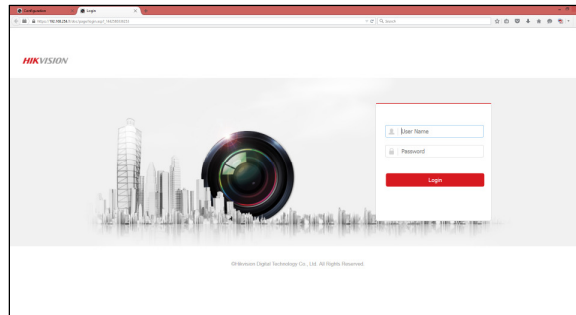


Figure 8 NVR Logon Page

Questions

Contact techsupport.usa@hikvision.com