

Title:	Adding Arecont 180 degree camera (AV8185DN)				
Date:	04/21/2014	Version:	1.0	Pages	13
Product:	9600 Series and 9016 Series NVRs				
Action Required:	Information only				

Arecont 180 degree (AV8185) cameras have 4 imagers, yet only 1 IP address. The camera outputs 4 in dependent streams- one stream per imager. This creates a question: “How to add an Arecont 180 degree camera to a HikVision NVR?” Here are two ways for adding: Web Browser and Local Menu.

Web Browser

From the configurations go to the “Camera Management” (Figure 1)

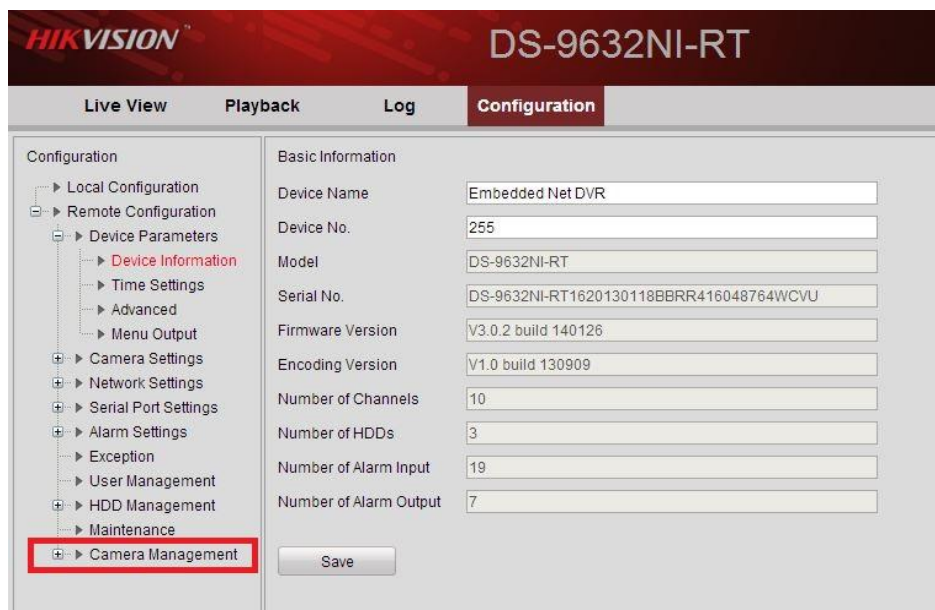


Figure 1

This will populate the list of the cameras currently connected to the NVR -Online or Offline (Figure 2).

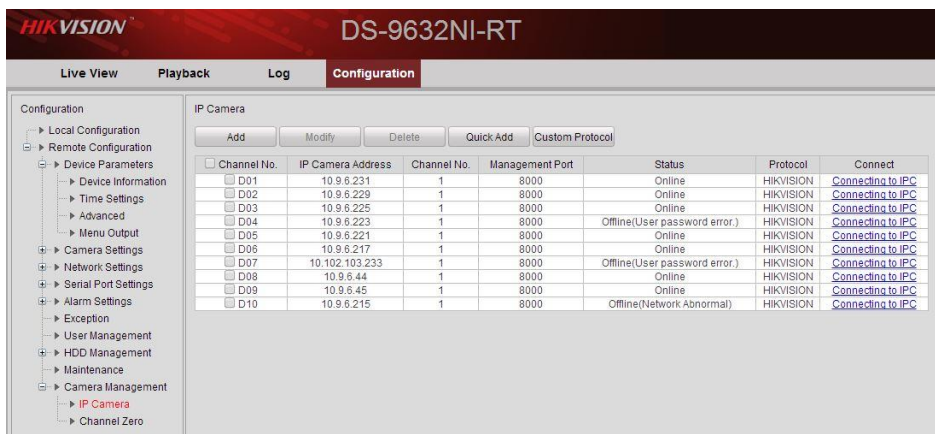


Figure 2

Title:	Adding Arecont 180 degree camera (AV8185DN)				
Date:	04/21/2014	Version:	1.0	Pages	13
Product:	9600 Series and 9016 Series NVRs				
Action Required:	Information only				

Now, we are going to manually add the Arecont camera. Press “ADD” (Figure 3). After pressing “ADD”, enter the camera’s information into the respective fields (Figures 4 and 5).

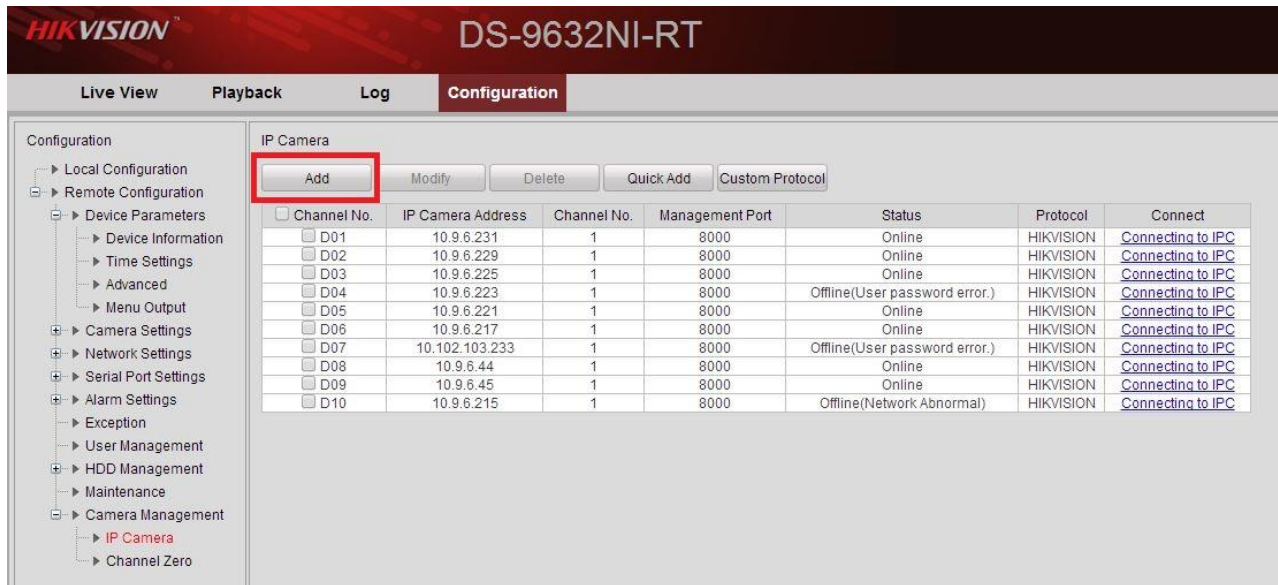


Figure 3



Figure 4

Title:	Adding Arecont 180 degree camera (AV8185DN)				
Date:	04/21/2014	Version:	1.0	Pages	13
Product:	9600 Series and 9016 Series NVRs				
Action Required:	Information only				

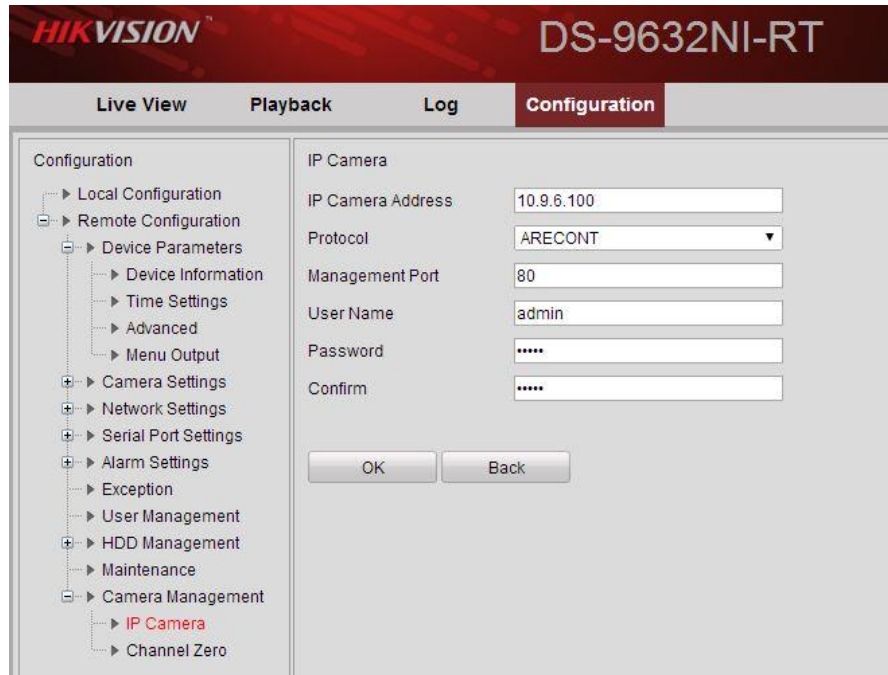


Figure 5

After adding the camera to the NVR, The camera will appear in the attached camera list (Figure 6).

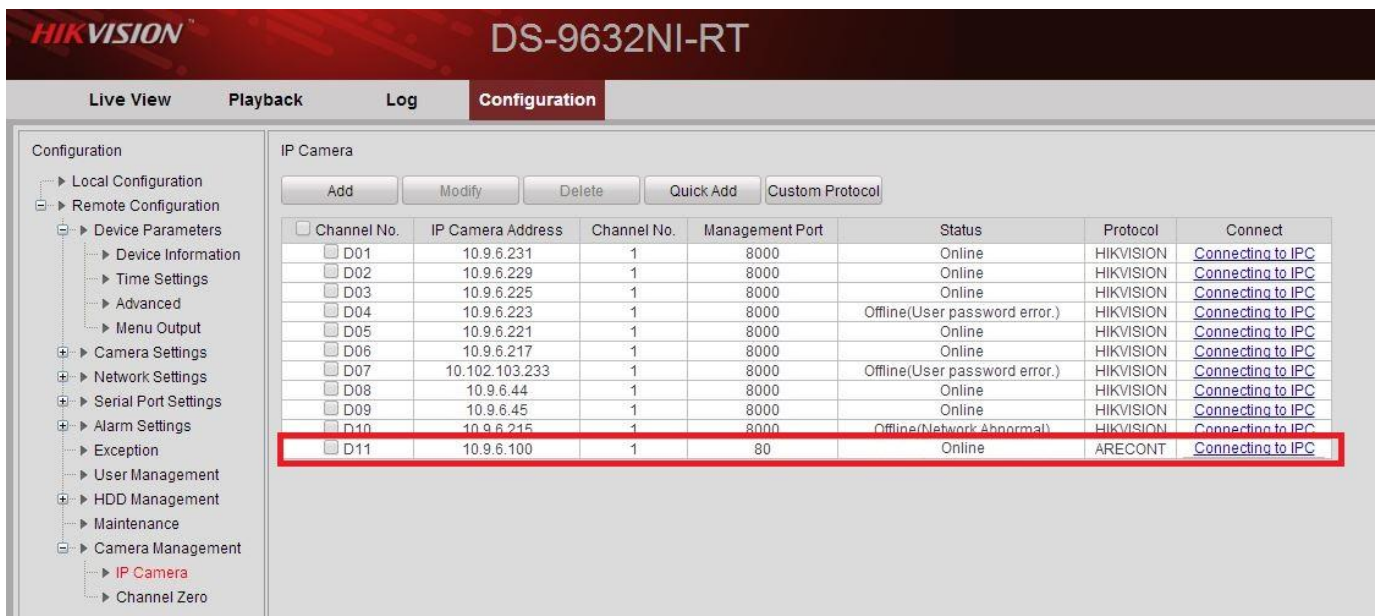


Figure 6

Title:	Adding Arecont 180 degree camera (AV8185DN)				
Date:	04/21/2014	Version:	1.0	Pages	13
Product:	9600 Series and 9016 Series NVRs				
Action Required:	Information only				

We need to repeat these steps for the second, third and fourth streams (Figure 6)

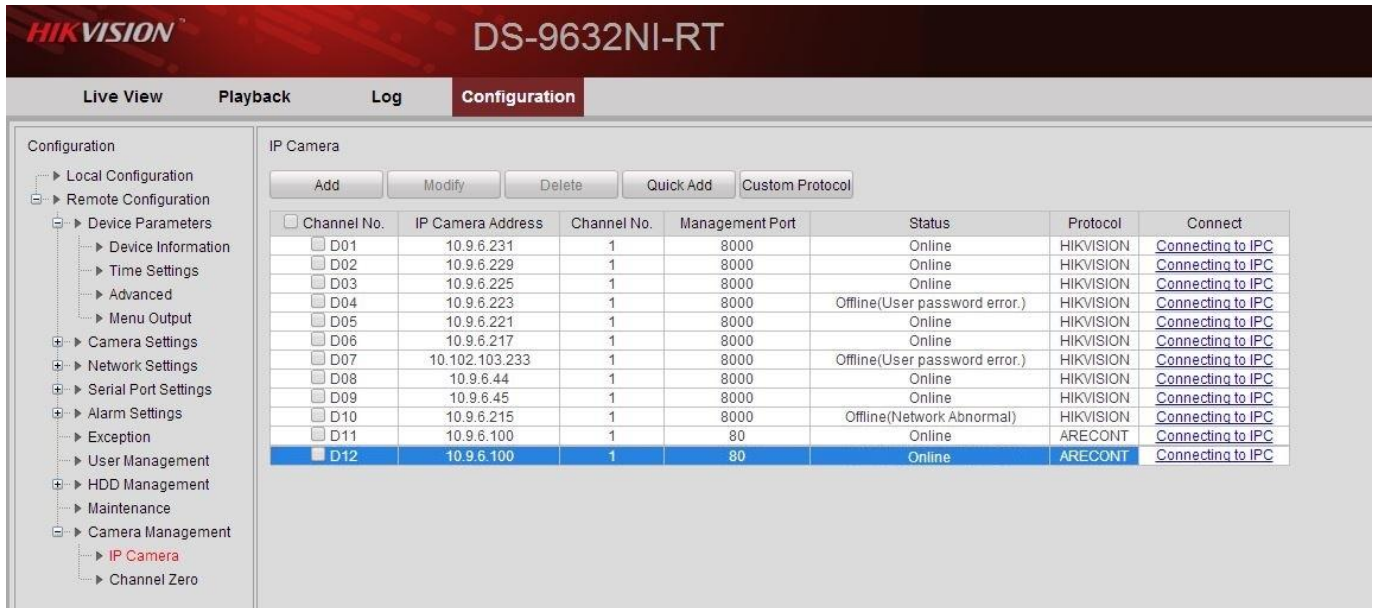


Figure (6)

After adding each stream, we need to manually change the stream number. For this, click on the second stream and press "MODIFY" (Figure 7).

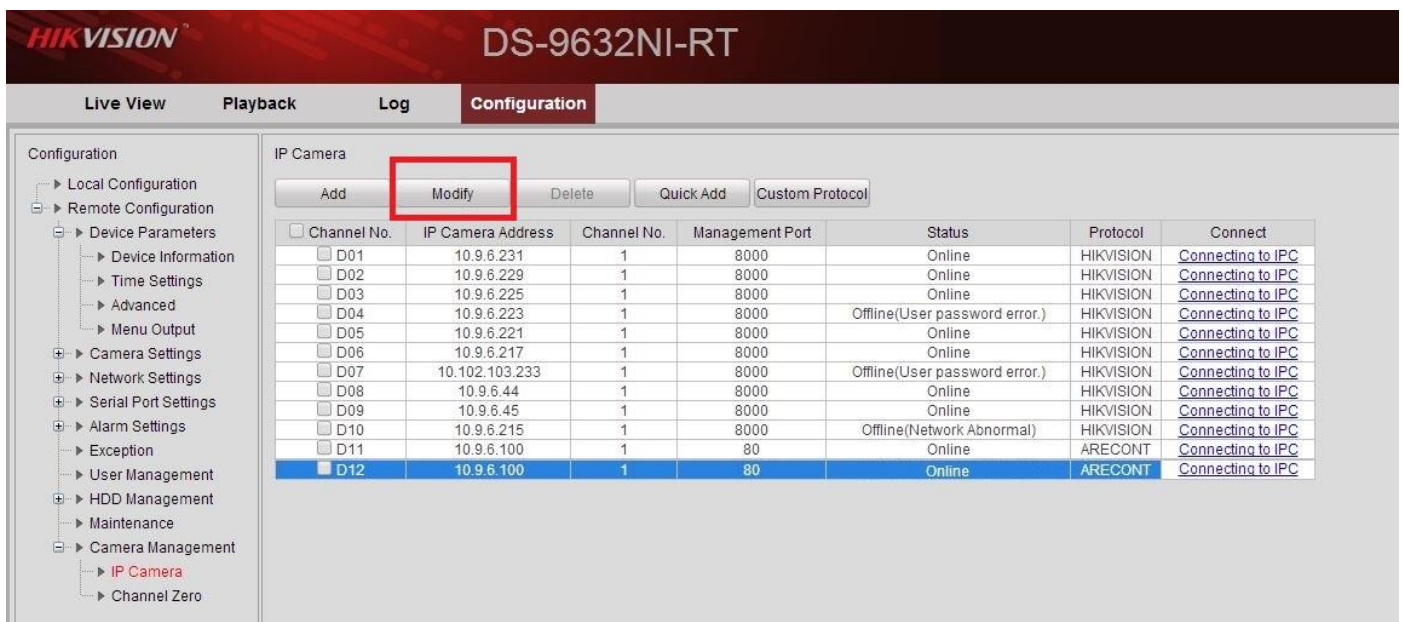


Figure 7

Title:	Adding Arecont 180 degree camera (AV8185DN)				
Date:	04/21/2014	Version:	1.0	Pages	13
Product:	9600 Series and 9016 Series NVRs				
Action Required:	Information only				

When entering the modification screen, we need to change the “CHANNEL NUMBER”, which represents the STREAM NUMBER (Figure 8, 9 and 10).

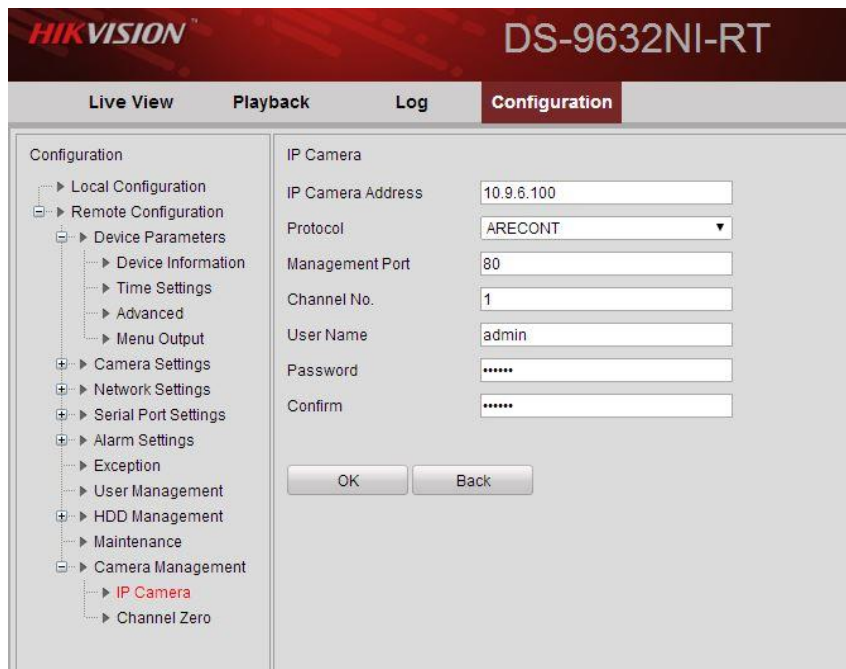


Figure 8

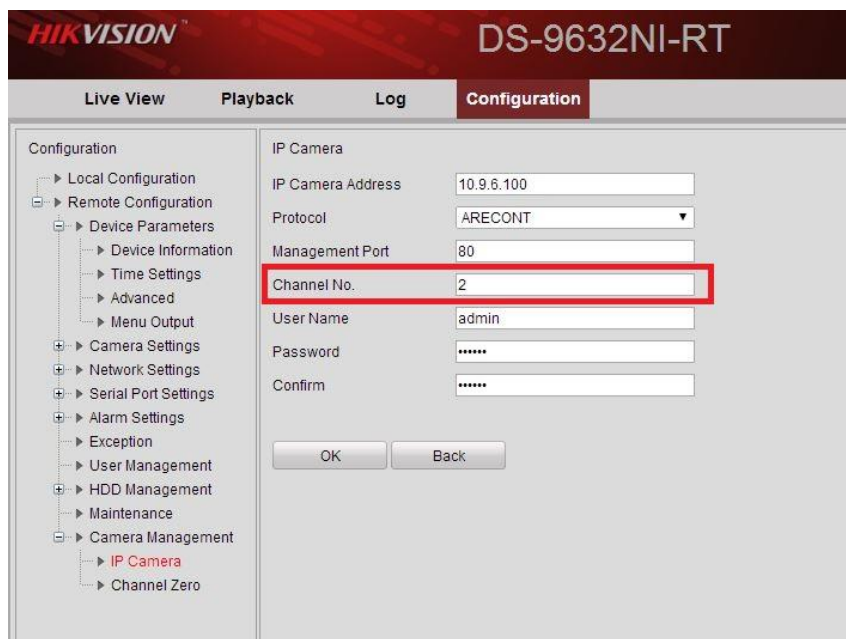


Figure 9

Title:	Adding Arecont 180 degree camera (AV8185DN)				
Date:	04/21/2014	Version:	1.0	Pages	13
Product:	9600 Series and 9016 Series NVRs				
Action Required:	Information only				

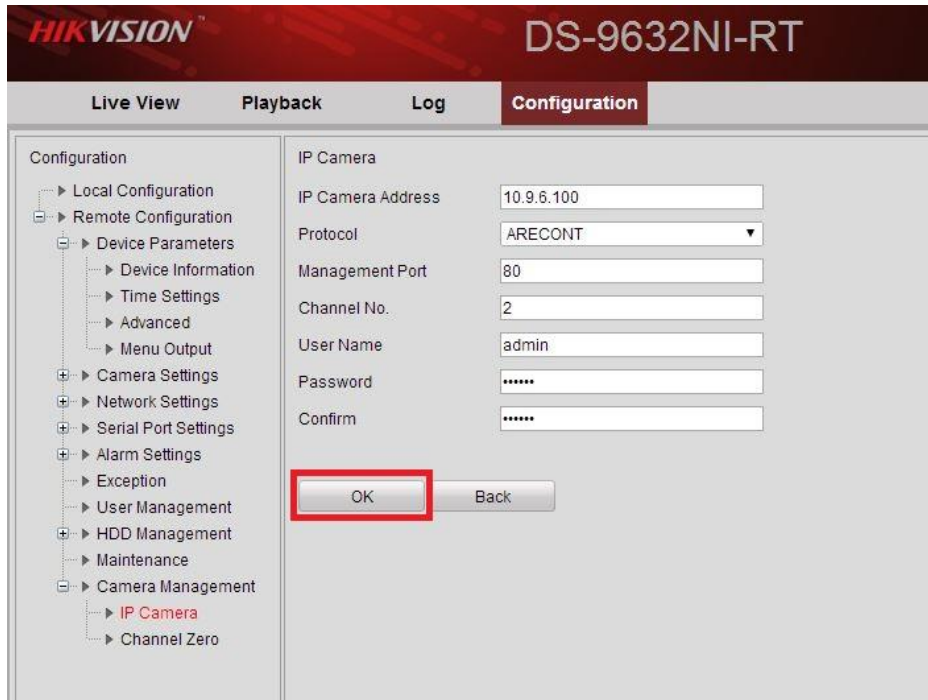


Figure 10

After These steps, the attached camera list will look like this (Figure 11).

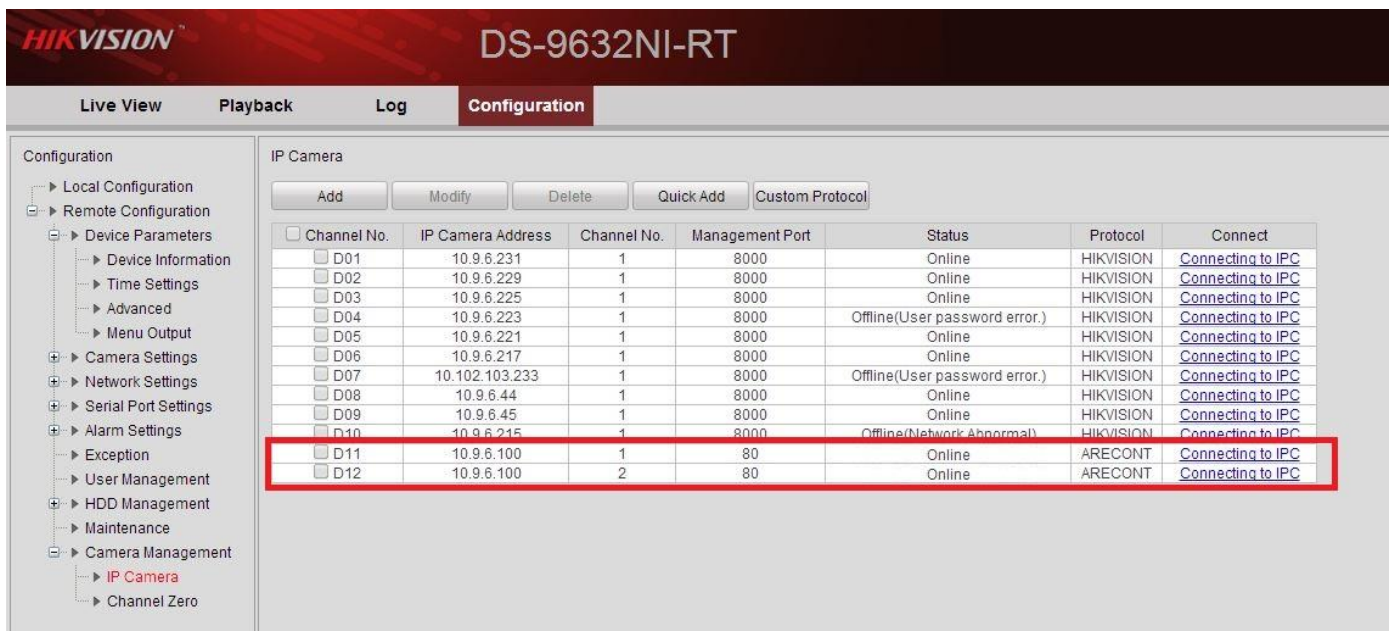


Figure 11

Title:	Adding Arecont 180 degree camera (AV8185DN)				
Date:	04/21/2014	Version:	1.0	Pages	13
Product:	9600 Series and 9016 Series NVRs				
Action Required:	Information only				

Repeat these steps for streams 3 and 4. Sometimes Arecont does not correspond the stream number with the image number (Figure 12).

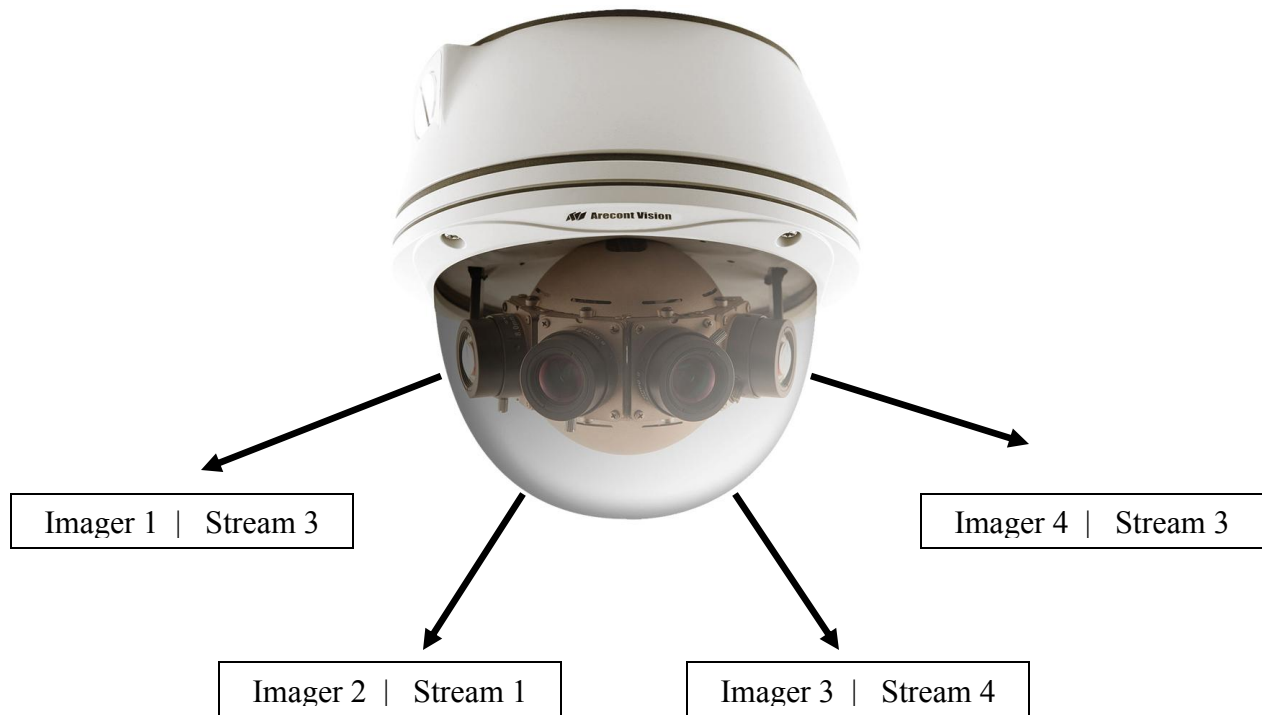


Figure 12 (This layout is just an example. Results may vary)

Title:	Adding Arecont 180 degree camera (AV8185DN)				
Date:	04/21/2014	Version:	1.0	Pages	13
Product:	9600 Series and 9016 Series NVRs				
Action Required:	Information only				

Local Menu

From the configurations go to the “Cameras Setup” (Figure 1)

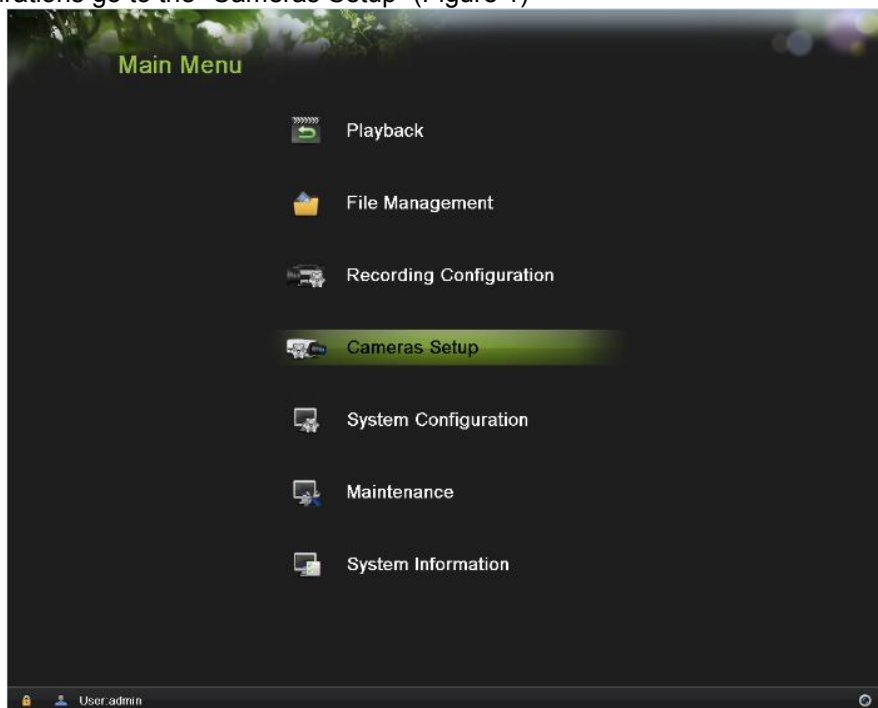


Figure 1

Now, we are going to manually add the Arecont camera. Press “Customer Adding” (Figure 2). After that, enter the camera’s information into the respective fields (Figures 3). You will see the information and click them all (Figure 4).

Title:	Adding Arecont 180 degree camera (AV8185DN)				
Date:	04/21/2014	Version:	1.0	Pages	13
Product:	9600 Series and 9016 Series NVRs				
Action Required:	Information only				



Figure 2



Figure 3

Title:	Adding Arecont 180 degree camera (AV8185DN)				
Date:	04/21/2014	Version:	1.0	Pages	13
Product:	9600 Series and 9016 Series NVRs				
Action Required:	Information only				



Figure 4

After adding the cameras to the NVR, The cameras will appear in the attached camera list (Figure 5).

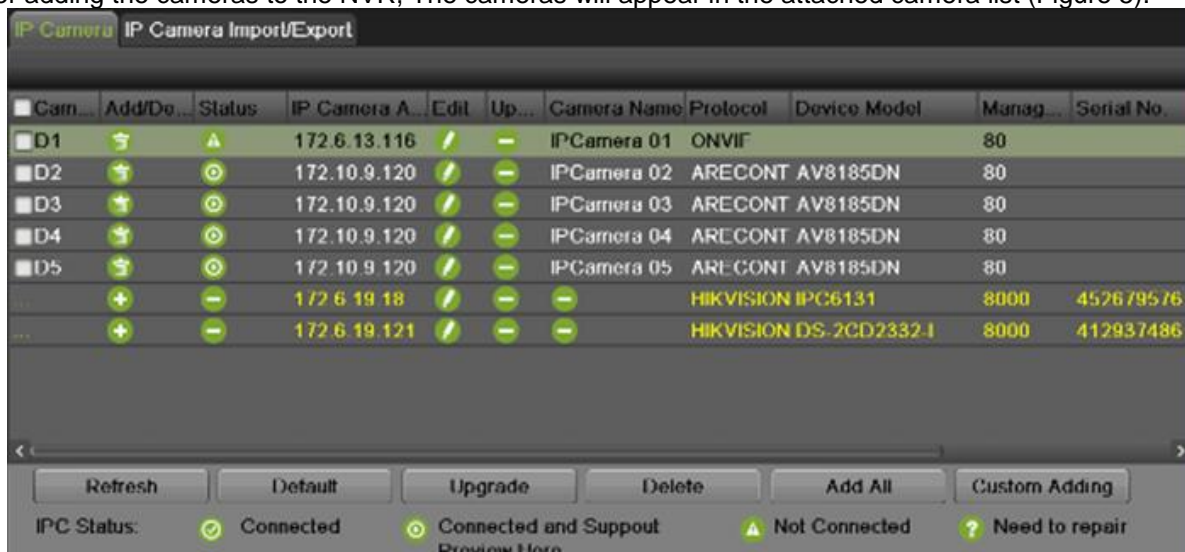


Figure 5

Then you will see the images in the Main View (Figure 6).

Title:	Adding Arecont 180 degree camera (AV8185DN)				
Date:	04/21/2014	Version:	1.0	Pages	13
Product:	9600 Series and 9016 Series NVRs				
Action Required:	Information only				



Figure 6

At the end, you can check the order of NVR and IPC.
The order of IPC channel is as follows. You can find that the order that Hikvision NVR get and the IPC's matches very well.



Channel 1

- 11 -

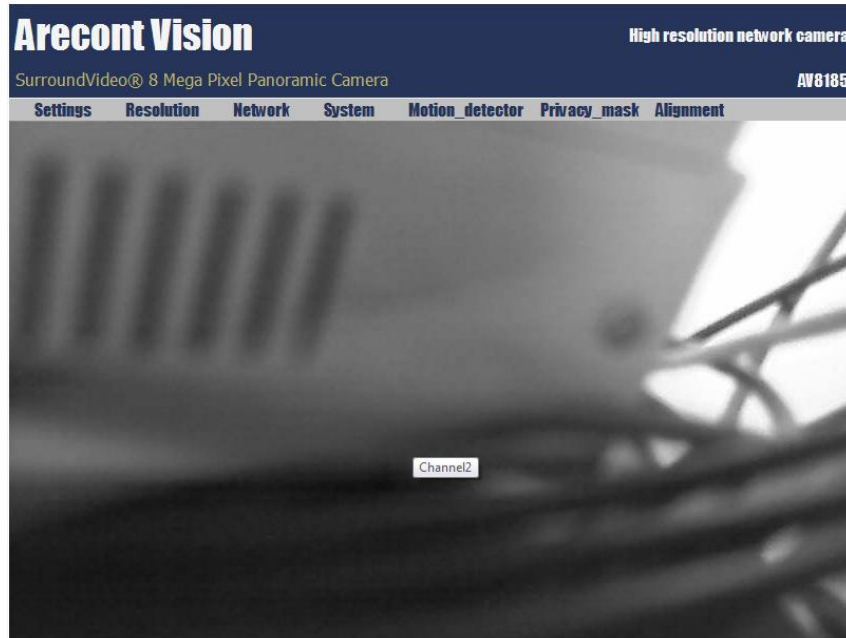
Hikvision USA, Inc.

908 Canada Court, Industry, CA 91748

Phone: 909-895-0400 Fax: 909-595-0788

Email: techsupport@hikvisionusa.com Website: <http://www.hikvision.com>

Title:	Adding Arecont 180 degree camera (AV8185DN)				
Date:	04/21/2014	Version:	1.0	Pages	13
Product:	9600 Series and 9016 Series NVRs				
Action Required:	Information only				



Channel 2



Channel 3

Title:	Adding Arecont 180 degree camera (AV8185DN)				
Date:	04/21/2014	Version:	1.0	Pages	13
Product:	9600 Series and 9016 Series NVRs				
Action Required:	Information only				



Channel 4