

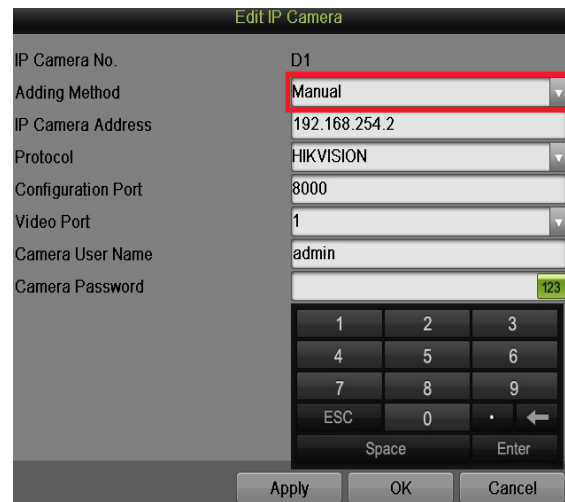
Title:	DS-76xxNI-SE/(8)P, DS-7716NI-SP/16 PoE NVR				
Date:	3/28/2014	Version:	1	Pages	1
Product:	Hikvision PoE NVR, 3 rd Party POE Switch				
Action Required:	Information				

Quick guide on connecting Hikvision cameras and 3rd party POE Switch with Hikvision PoE NVR

1. Plug cameras into back of Hikvision NVR Built-in PoE Switch



- On NVR, go to camera set up page. Click on the edit pencil and edit adding mode from Plug n Play to Manual (Make sure to enter camera password “Hikvision camera default password 12345”)



- Unplug cameras from NVR and plug cameras into external PoE switch. Connect one Ethernet cable from 3rd party switch to Hikvision NVR switch. (Make sure to plug cable into port that was switch to Manual Mode)

